

# I.622 N | Tapered handles

Technopolymer

INCH

RoHS

PA

+122 °F  
-4 °F

- 1
- 2
- 3
- 4
- 5
- 6
- 7
- 8
- 9
- 10
- 11
- 12
- 13
- 14
- 15
- 16
- 17
- 18

## MATERIAL

High-resilience polyamide based (PA) technopolymer, black colour, glossy finish.

## STANDARD EXECUTION

Plain blind hole.

The elastic coupling, by press-fit assembly on h9 tolerance drawn stock bars, is not affected by vibrations and prevents the handle from slipping off (see Technical Data on page A-12).

## OTHER EXECUTIONS ON REQUEST

Standard metric holes.

## SPECIAL EXECUTIONS ON REQUEST

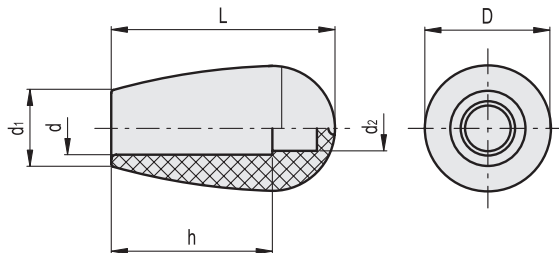
Different RAL colours.

## ASSEMBLY INSTRUCTIONS

Fit the handle onto slight chamfered shaft end and push as far as possible by hand or by means of a small press. Alternatively it is possible to tap the handle with a plastic or wooden mallet until firmly in place. In this case we strongly recommend to use a cloth or other suitable soft material over the product to avoid any surface damage.



ELESA Original design



INCH

Code	Description	D	L	d2	d	d1	h	⚖️
920916	I.622/25 N-1/4	0.63	0.98	0.16	0.250	0.47	0.67	0.01
920926	I.622/30 N-5/16	0.79	1.26	0.24	0.312	0.55	0.83	0.02
920936	I.622/40 N-3/8	1.02	1.65	0.3	0.375	0.67	1.18	0.03
920946	I.622/55 N-1/2	1.34	2.15	0.22	0.500	0.83	1.57	0.08