



Product Change Notification

Date Issued :	December 05, 2022	PCN Number :	513051
Reason for Change :	Change to Product		
Description of Change :	This notification is to inform you about changes that are being made to the part(s) as identified in the list. This change will affect the Fit, Form, Function, or appearance of the parts. Or it may result in a change to the specification or raw material.		
Reason for Short Notice :	Corrective Actions		
Assessment of Change :	No change to parts - Form/Fit/Function		
Planned Implementation Date :	March 05, 2023		
Sample Availability Date:	December 23, 2022		
Internal Molex Qualification Date :	December 16, 2022		
Last date to request Samples by Customer :	December 20, 2022		
Traceability Code Markings / Date :	Date code		

Before Picture

- Change content:

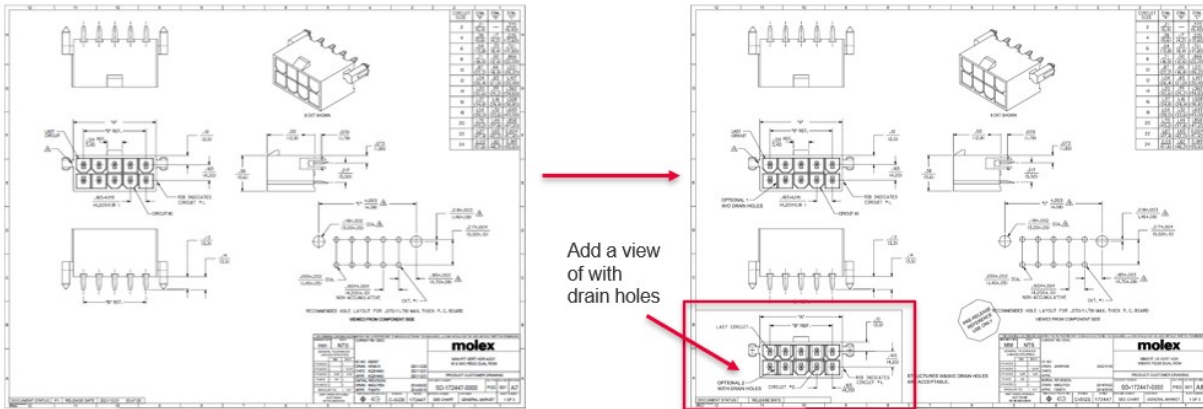


Photo is used as representation of product only
and may not be exact to product you receive.

2156740051 Revision A

1

Molex Confidential Information
© 2016 Molex – All Rights Reserved. Unauthorized Reproduction/Distribution is Prohibited.



After Picture

Overview

- The reason of the change:

Currently plastic housing PN469990990 of PN 1724470610 with drain holes ,but SD-drawing shows this plastic housing w/o drain holes.so we modify SD- drawing to be consistent with the actual sample.

- Product Impact

No impact to fit, form or function

- Part Number Impact

See attached impacted parts list

- Qualification Reports, PPAPs, and samples available upon request (after the date(s) shown above)

2156740051 Revision A

2

Molex Confidential Information
© 2016 Molex – All Rights Reserved. Unauthorized Reproduction/Distribution is Prohibited.

molex

RELEASED

You may address inquires regarding this PCN by clicking on the below link
mailto:pcn_coordinator@molex.com?subject=PCN_Notification:513051
or contact your Local Sales Engineer.

Note: While responding, please retain " PCN Notification : **PCN Notification: 513051** " in the e-mail Subject line for faster response.

[Molex, LLC](#)
2222 Wellington Court
Lisle, IL 60532
TEL (800) 786-6539
www.molex.com

PCN No Part List

513051 [1724470404](#)

513051 [1724470410](#)

513051 [1724470412](#)

513051 [1724470504](#)

513051 [1724470510](#)

513051 [1724470512](#)

513051 [1724470604](#)

513051 [1724470610](#)

513051 [1724470612](#)

513051 [1724470704](#)

513051 [1724470710](#)

513051 [1724470712](#)

513051 [1724479404](#)

513051 [1724479410](#)

513051 [1724479412](#)

513051 [1724479504](#)

513051 [1724479510](#)

513051 [1724479512](#)

513051 [1724479604](#)

513051 [1724479610](#)

513051 [1724479612](#)

513051 [1724479704](#)

513051 [1724479710](#)

513051 [1724479712](#)