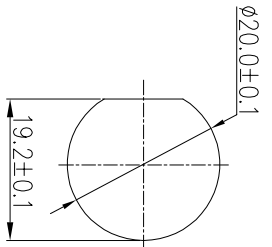
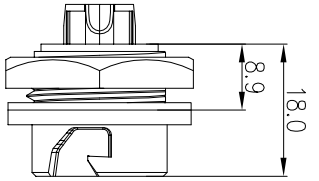


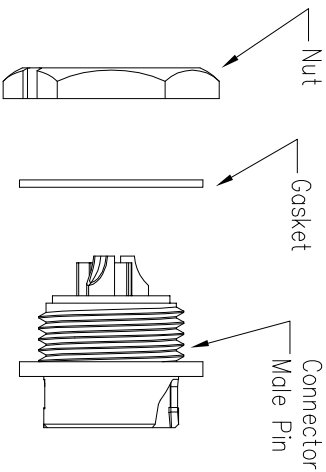
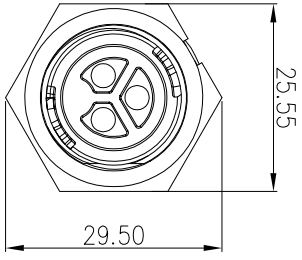
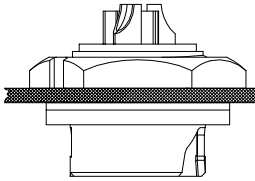
REV.	EN. NO.	DESCRIPTION	SIGN	DATE
C1	N/A	INITIAL DRAWING	Liu	2019/08/13



Recommended Panel Cut-Out



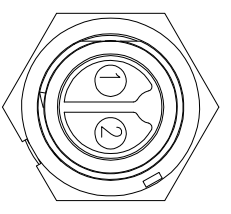
Panel T: Max 2.5



Specification:

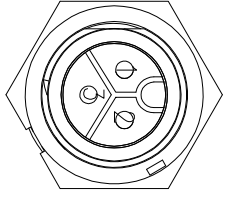
1. Operation Temperature: $-45^{\circ}\text{C} \sim 105^{\circ}\text{C}$.
2. Insulation Resistance: $100\text{M}\Omega$ at $\text{DC}500\text{V}$.
3. Contact Resistance: $<10\text{m}\Omega$.
4. Withstand Voltage: 2000V AC
5. Operating Current: 20A
6. Operating Voltage: $\text{AC } 300\text{V}$
7. Waterproof Rate: IP67 (Mated)
8. Housing: Nylon, Black
9. Male Pin: Copper Alloy, Gold Plated
10. Gasket: Silicon Gray
11. Panel Nut: Nylon, Orange
12. Torque Rate: $0.8 \sim 1.0\text{N} \cdot \text{m}$
13. RoHS Compliant.
14. UL Compliant.
15. Mating Cap P/N: $806-00103-00$

23XXXX535-03
Pin Number



2 Pin

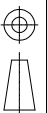
P/N: 23002535-03



3 Pin

P/N: 23003535-03

Pin Assignments Front View



UNIT: mm

TOLERANCE	± 0.25
.X	± 0.15
.XX	± 0.05
.XXX	± 0.05
ANGLES	$\pm 1'$

DESCRIPTION

Middle Series Push Lock
Rear Mount With Male Pin

SCALE	1:1	SHEET	1	OF	1
REV	C1	SIZE	A4	* : Inspection Item	

CHOGORI

PART NO 23XXXX535-03

DRAWN BY Liu

DATE 2019/08/13

DWG NO

CHECKED BY Mo

DATE 2019/08/13

CUSTOMER

APPROVED BY Panson

DATE 2019/08/13