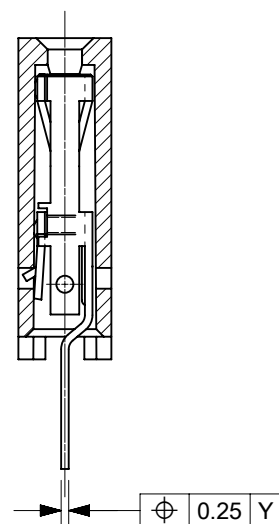


RECOMMENDED P.C. BOARD
HOLE PATTERN
FOR STRAIGHT PINS.



SECTION C-C
SHOWING STRAIGHT PINS.

NOTES:

1. CONTACT-PLATED PHOSPHOR BRONZE.
2. HOUSING-15% GLASS FILLED POLYESTER.
COLOUR: BLACK.
3. FOR 0.635/[.025] SQ. MALE PINS THE LENGTH
MUST BE 5.65/[.222] MIN & 7.00/[.276] MAX. TO
ENSURE GOOD CONNECTION WITH CONTACT.
4. PRODUCT SPECIFICATION: PS-99020-0001.
5. PCB THICKNESS 1.6MM

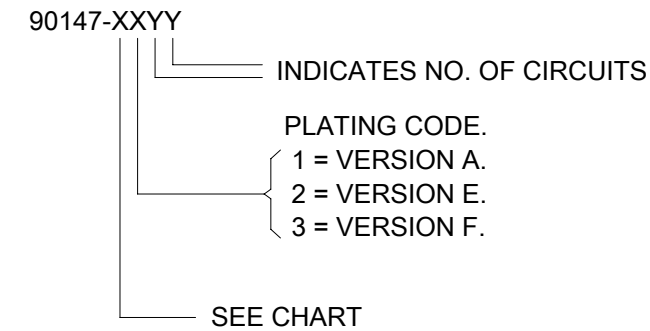
THIS DRAWING CONTAINS INFORMATION THAT IS PROPRIETARY TO MOLEX ELECTRONIC TECHNOLOGIES, LLC AND SHOULD NOT BE USED WITHOUT WRITTEN PERMISSION									
DIMENSION UNITS MM/INCH		SCALE 5:1		CURRENT REV DESC: MIGRATED TO NX				molex	
GENERAL TOLERANCES (UNLESS SPECIFIED)				EC NO: 613447					
		MM	INCH	DRWN: ABABU01		2019/03/06		C-GRID III, SINGLE ROW VERTICAL P.C. BOARD CONNECTOR ASSEMBLY.	
4 PLACES ±				CHK'D: NMANE02		2019/03/11		PRODUCT CUSTOMER DRAWING	
3 PLACES ±				APPR: MRAMAKRISHNA		2019/03/11		DOCUMENT NUMBER	
2 PLACES ±				INITIAL REVISION:				SDA-90147	
1 PLACE ±				DRWN: DB		1987/07/14		DOC TYPE DOC PART REVISION	
0 PLACES ±				APPR: JDENNEHY		2005/07/07		PSD 001 AD1	
ANGULAR TOL ± 2.0°				THIRD ANGLE PROJECTION		DRAWING		SERIES	
DRAFT WHERE APPLICABLE MUST REMAIN WITHIN DIMENSIONS				B-SIZE		90147		MATERIAL NUMBER	
				CUSTOMER		GENERAL MARKET		SHEET NUMBER	
				SEE TABLE		1 OF 2			

PART NO'S - STRAIGHT PINS		NO. OF CKTS.	A	B ^{+0.00} -0.30 [B ^{+0.000} -.012]	QTY. PER TUBE
STANDARD	CUSTOMER SPECIFIC				
90147-1X02	_____	2	2.54/[.100]	5.08/[.200]	105
90147-1X03	_____	3	5.08/[.200]	7.62/[.300]	72
90147-1X04	_____	4	7.62/[.300]	10.16/[.400]	52
90147-1X05	90147-9105	5	10.16/[.400]	12.70/[.500]	44
90147-1X06	_____	6	12.70/[.500]	15.24/[.600]	36
90147-1X07	_____	7	15.24/[.600]	17.78/[.700]	30
90147-1X08	_____	8	17.78/[.700]	20.32/[.800]	26
90147-1X09	_____	9	20.32/[.800]	22.86/[.900]	22
90147-1X10	_____	10	22.86/[.900]	25.40/[1.000]	22
90147-1X11	_____	11	25.40/[1.000]	27.94/[1.100]	20
90147-1X12	_____	12	27.94/[1.100]	30.48/[1.200]	18
90147-1X13	_____	13	30.48/[1.200]	33.02/[1.300]	16
90147-1X14	_____	14	33.02/[1.300]	35.56/[1.400]	14
90147-1X15	_____	15	35.56/[1.400]	38.10/[1.500]	14
90147-1X16	_____	16	38.10/[1.500]	40.64/[1.600]	13
90147-1X17	_____	17	40.64/[1.600]	43.18/[1.700]	13
90147-1X18	_____	18	43.18/[1.700]	45.72/[1.800]	12
90147-1X19	_____	19	45.72/[1.800]	48.26/[1.900]	12
90147-1X20	_____	20	48.26/[1.900]	50.80/[2.000]	11
90147-1X21	_____	21	50.80/[2.000]	53.34/[2.100]	11
90147-1X22	_____	22	53.34/[2.100]	55.88/[2.200]	10
90147-1X23	_____	23	55.88/[2.200]	58.42/[2.300]	9
90147-1X24	_____	24	58.42/[2.300]	60.96/[2.400]	9
90147-1X25	_____	25	60.96/[2.400]	63.50/[2.500]	8
90147-1X26	_____	26	63.50/[2.500]	66.04/[2.600]	8
90147-1X27	_____	27	66.04/[2.600]	68.58/[2.700]	8
90147-1X28	_____	28	68.58/[2.700]	71.12/[2.800]	7
90147-1X29	_____	29	71.12/[2.800]	73.66/[2.900]	7
90147-1X30	_____	30	73.66/[2.900]	76.20/[3.000]	7
90147-1X31	_____	31	76.20/[3.000]	78.74/[3.100]	7
90147-1X32	_____	32	78.74/[3.100]	81.28/[3.200]	6

PLATING VERSION A
 PRE-PLATED HOT DIP TIN
 1.0 TO 2.5 µm [.000040" TO .000100"].

PLATING VERSION E
 1.27 TO 1.78 µm [.000050" TO .000070"] NICKEL
 OVERALL, 0.38 TO 0.64 µm [.000015" TO .000025"]
 GOLD ON CONTACT AREA (OVER NICKEL).
 3 TO 5 µm [.000120" TO .000200"] TIN
 ON SOLDER TAILS (OVER NICKEL).

PLATING VERSION F.
 1.27 TO 1.78 µm [.000050" TO .000070"] NICKEL
 OVERALL, 0.76 TO 1.0 µm [.000030" TO .000040"]
 GOLD ON CONTACT AREA (OVER NICKEL).
 3 TO 5 µm [.000120" TO .000200"] TIN
 ON SOLDER TAILS (OVER NICKEL).



STANDARD PRODUCTS

THIS DRAWING CONTAINS INFORMATION THAT IS PROPRIETARY TO MOLEX ELECTRONIC TECHNOLOGIES, LLC AND SHOULD NOT BE USED WITHOUT WRITTEN PERMISSION											
DIMENSION UNITS MM/INCH		SCALE 1:1		CURRENT REV DESC: MIGRATED TO NX						molex	
GENERAL TOLERANCES (UNLESS SPECIFIED)				EC NO: 613447		DRWN: ABABU01 2019/03/06		C-GRID III, SINGLE ROW VERTICAL P.C. BOARD CONNECTOR ASSEMBLY.			
4 PLACES ±		±		CHK'D: NMANE02 2019/03/11		APPR: MRAMAKRISHNA 2019/03/11		PRODUCT CUSTOMER DRAWING			
3 PLACES ±		±		INITIAL REVISION:		DRWN: DB 1987/07/14		DOCUMENT NUMBER			
2 PLACES ±		±		APPR: JDENNEHY 2005/07/07		SDA-90147		PSD 001 AD1			
1 PLACE ±		±		DRAFT WHERE APPLICABLE MUST REMAIN WITHIN DIMENSIONS		THIRD ANGLE PROJECTION		DRAWING			
0 PLACES ±		±		ANGULAR TOL ± 2.0°		SERIES		MATERIAL NUMBER			
DOCUMENT STATUS		P1		RELEASE DATE		2019/03/11 07:13:20		CUSTOMER		SHEET NUMBER	
						B-SIZE 90147		GENERAL MARKET		2 OF 2	