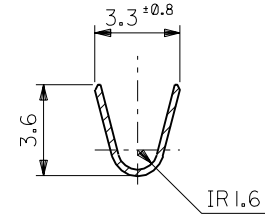
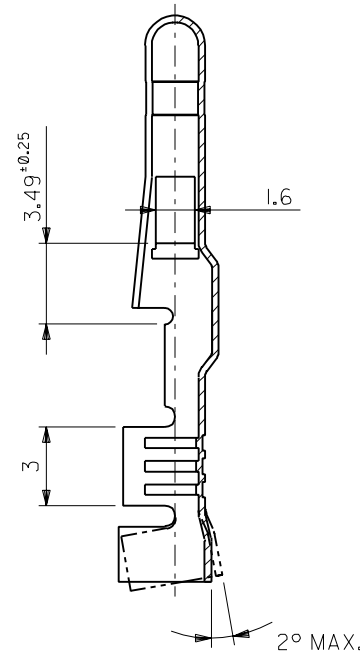
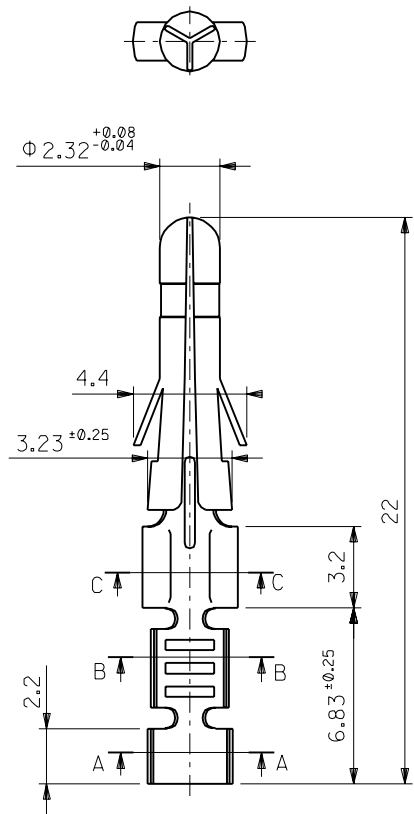
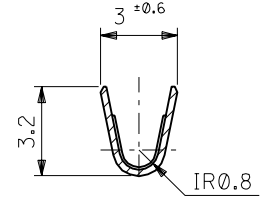


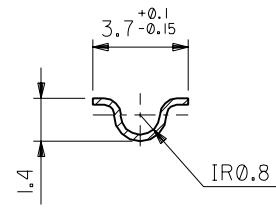
DWG. NO. SD-1380\*



SECT. A-A



SECT. B-B



SECT. C-C

ニッケル (2 μm MIN.) 下地 金 (0.35 μm MIN.) OVER	39-00-0306	I380GL	バラ端子 LOOSE
GOLD (0.35 μm MIN.) OVER NICKEL (2 μm MIN.)	39-00-0305	I380G	連鎖状端子 CHAIN
銅 (3 μm MIN.) 下地 錫 (0.5 μm MIN.)	39-00-0304	I380T2L	バラ端子 LOOSE
TIN (0.5 μm MIN.) OVER COPPER (3 μm MIN.)	39-00-0303	I380T2	連鎖状端子 CHAIN
銅 (0.5 μm MIN.) 下地 錫 (0.9 μm MIN.)	39-00-0302	I380TL	バラ端子 LOOSE
TIN (0.9 μm MIN.) OVER COPPER (0.5 μm MIN.)	39-00-0283	I380T	連鎖状端子 CHAIN
メッキ PLATING	EDP.NO.	ENG.NO.	形状 FORM

注記 NOTES:  
1. 一般公差 : ±0.4  
GENERAL TOLERANCES : ±0.4

材料 MATERIAL	黄銅 BRASS 0.264 t	MOLEX-JAPAN CO.,LTD. 日本モレックス株式会社
仕上げ FINISH		
適用電線範囲 WIRE RANGE	AWG#18-#24	
被覆外径 INS. RANGE	Φ1.5 ~ 3.1	
DRAWN BY '93/06/18 H.HASEGAWA	CHK'D BY '93/06/18 H.HIRAMOTO	DWG. NO.
APP'D BY '93/06/18 M.FUKUSHIMA	尺度 SCALE 5 : 1	REV
一般公差 GENERAL TOLERANCES	記号 LTR	変更内容 REVISION RECORD
	DR. CHK.	日付 DATE