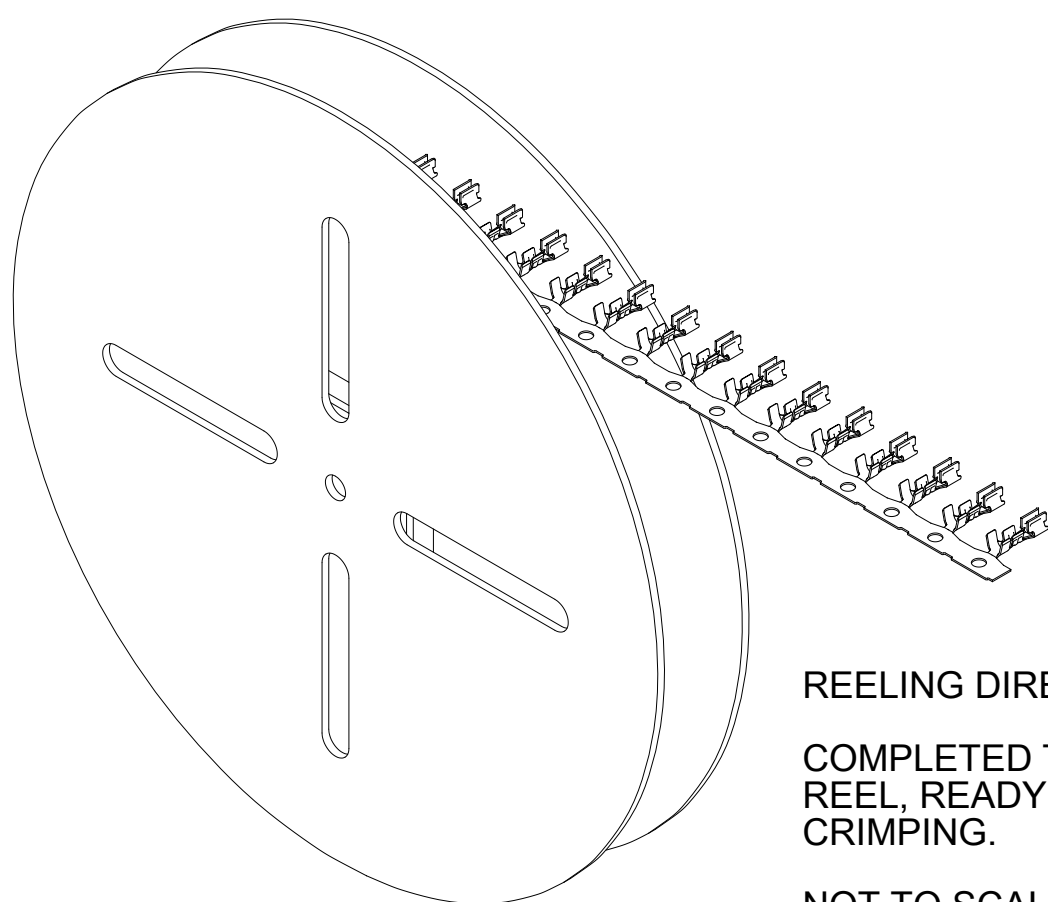
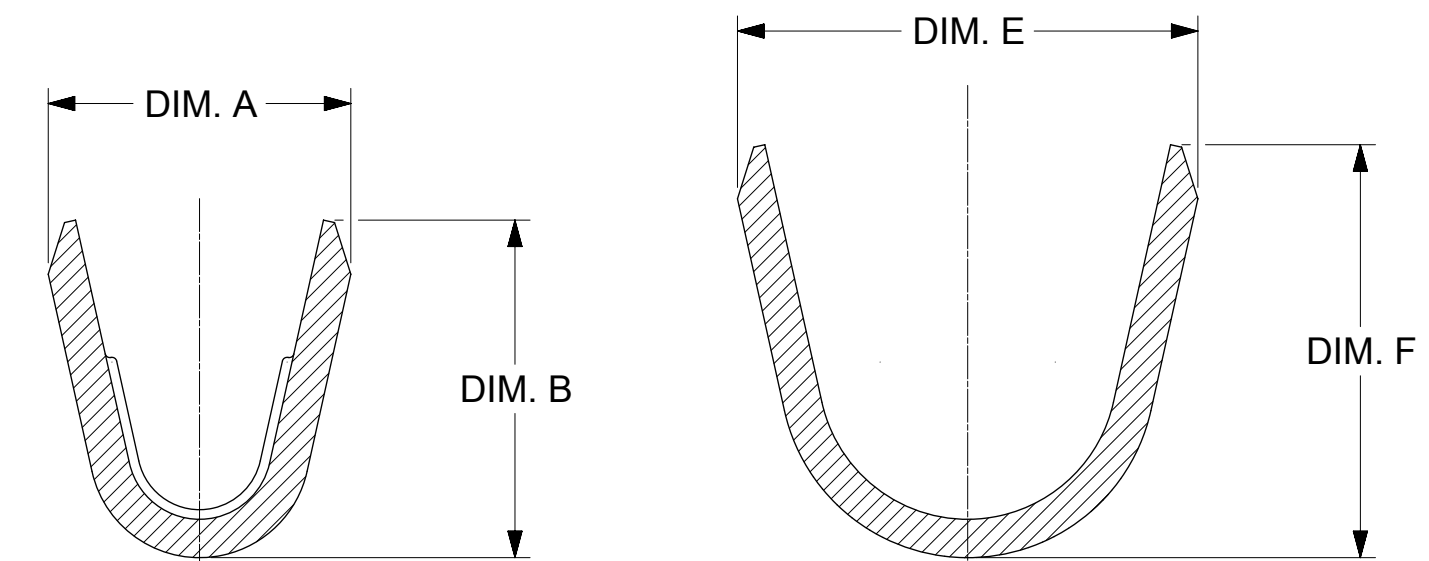
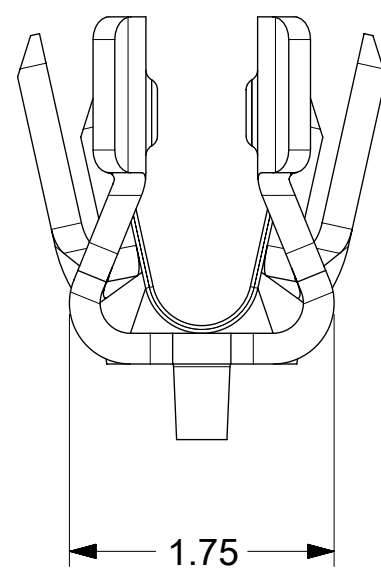
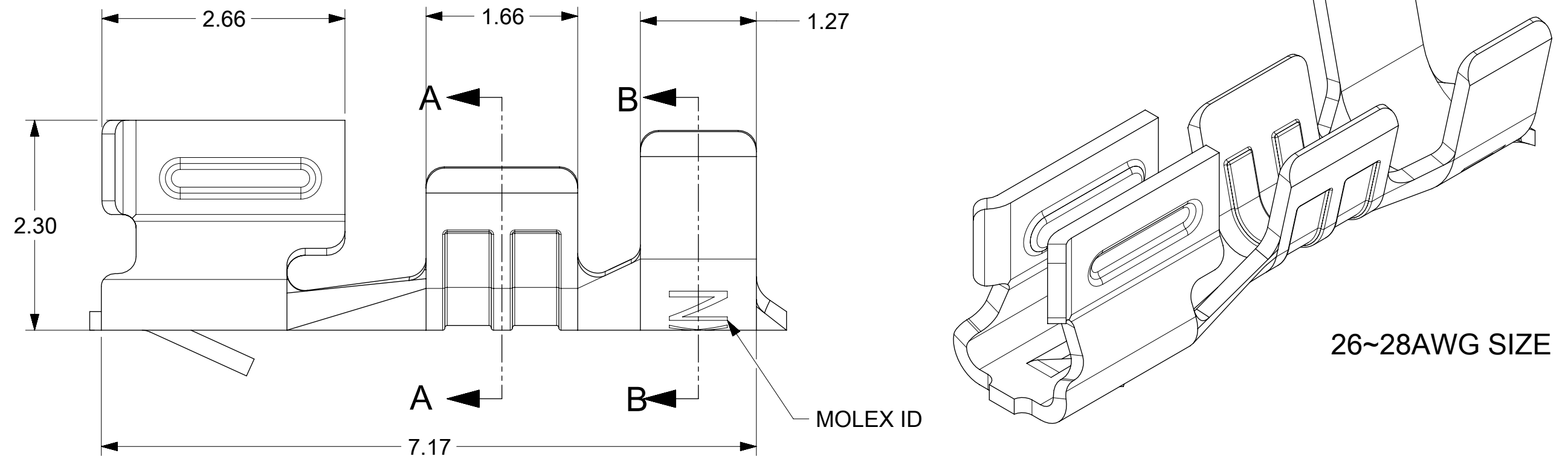
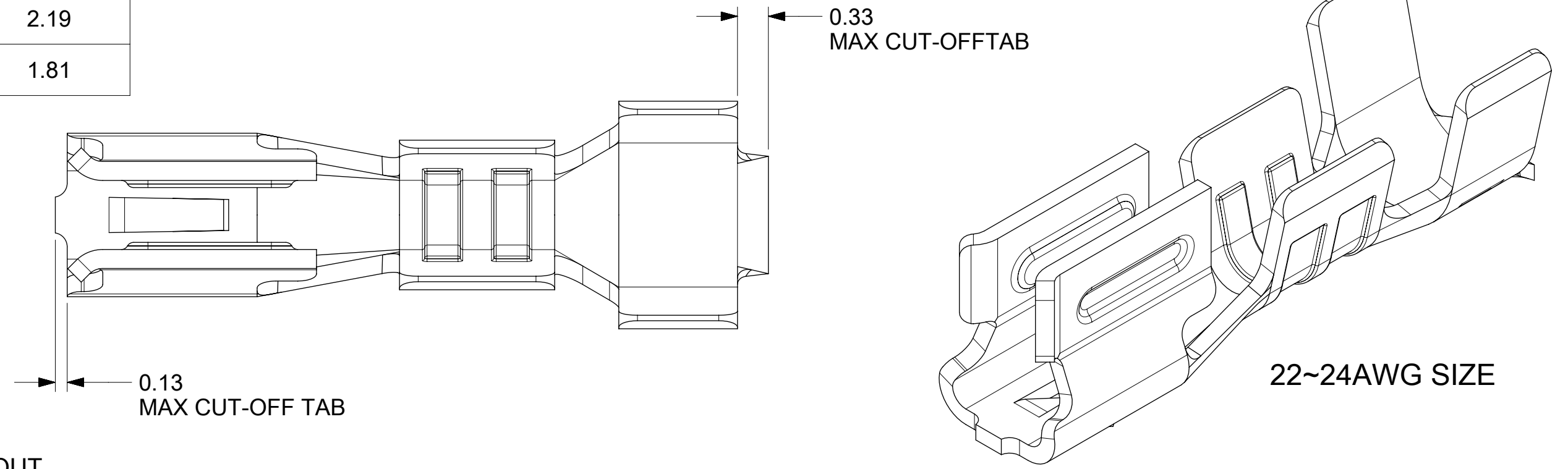


MATERIAL NUMBER	CRIMP SIZE (NOTE 8 & 9)	DIM. A ±0.3	DIM. B ±0.40	DIM. E±0.30	DIM. ±0.40
46626-1305	22-24 AWG	1.60	1.79	2.43	2.19
46626-1405	26-28 AWG	1.26	1.53	2.02	1.81

- NOTES:
1. MATERIAL: COPPER ALLOY
  2. FINISH: TIN OVER COPPER OVERALL, PRE - PLATED STRIP
  3. PRODUCT SPECIFICATION: 2079020001-PS
  4. PACKAGING INFORMATION: SEE REELING DIRECTION (THIS SHEET) AND PK-46626-001.
  5. MATES WITH: 207843 HEADERS, AND 207844 MALE TERMINALS.
  6. FOR USE WITH 207841 RECEPTACLE HOUSINGS.
  7. THIS PART CONFORMS TO CLASS B REQUIREMENTS OF COSMETIC SPEC PS-45499-002.
  8. 22~24AWG CRIMP SIZE IS SUITABLE FOR WIRE WITH A MAXIMUM INSULATION DIAMETER OF 1.6 / .06 (SUCH AS UL1007 OR 1061).
  9. 26~28AWG CRIMP SIZE IS SUITABLE FOR WIRE WITH A MAXIMUM INSULATION DIAMETER OF 1.3 / .05 (SUCH AS UL1007 OR 1061).
  10. DIMENSIONS GIVEN ACROSS CENTERLINES ARE SYMMETRICAL ABOUT THOSE CENTERLINES WITHIN HALF THE TOTAL TOLERANCE.



REELING DIRECTION  
 COMPLETED TERMINALS ON REEL, READY FOR CRIMPING.  
 NOT TO SCALE

SYMBOLS		THIS DRAWING CONTAINS INFORMATION THAT IS PROPRIETARY TO MOLEX ELECTRONIC TECHNOLOGIES, LLC AND SHOULD NOT BE USED WITHOUT WRITTEN PERMISSION	
▽ = 0	DIMENSION UNITS	SCALE	CURRENT REV DESC:
▽ = 0	mm	1:1	
▽ = 0	GENERAL TOLERANCES (UNLESS SPECIFIED)		
▽ = 0	ANGULAR TOL	± °	EC NO: 706742
▽ = 0	4 PLACES	±	DRWN: SHRUTJ 2022/04/20
▽ = 0	3 PLACES	±	CHK'D: SHRUTJ 2022/05/13
▽ = 0	2 PLACES	± 0.25	APPR: ISHWARG 2022/05/13
▽ = 0	1 PLACE	± 0.3	INITIAL REVISION:
▽ = 0	0 PLACES	±	DRWN: GJEEVANSURES 2018/09/18
▽ = 0	DRAFT WHERE APPLICABLE MUST REMAIN WITHIN DIMENSIONS		APPR: KPRASAD 2018/10/03
▽ = 0	THIRD ANGLE PROJECTION	DRAWING	SERIES
		C-SIZE	46626
		MATERIAL NUMBER	CUSTOMER
		466260002-SD	
		DOC TYPE	DOC PART
		PSD	000
		DOC PART	REVISION
		A3	
		SHEET NUMBER	
		1 OF 1	

DOCUMENT STATUS	P1	RELEASE DATE	2022/05/13	14:35:40
12	11	10	9	8