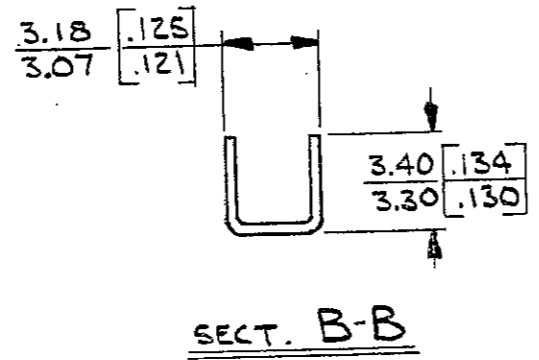
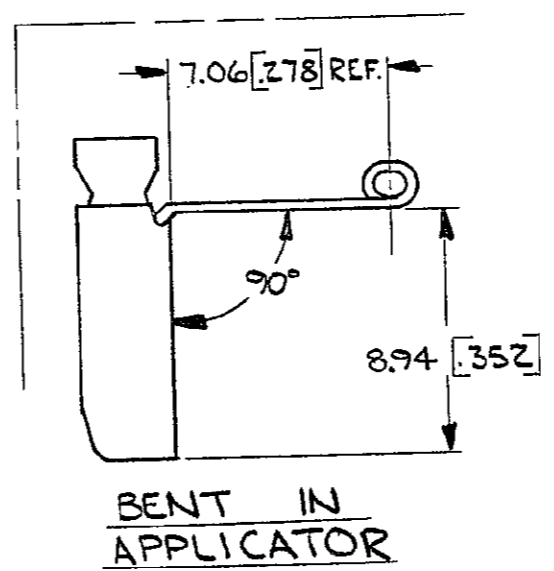
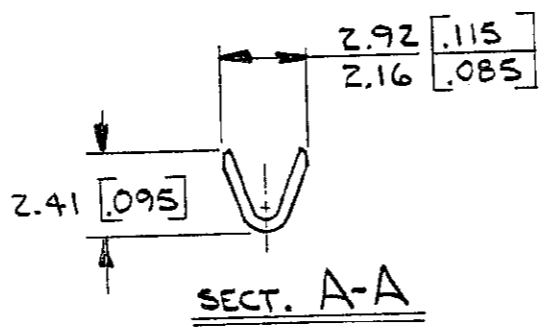
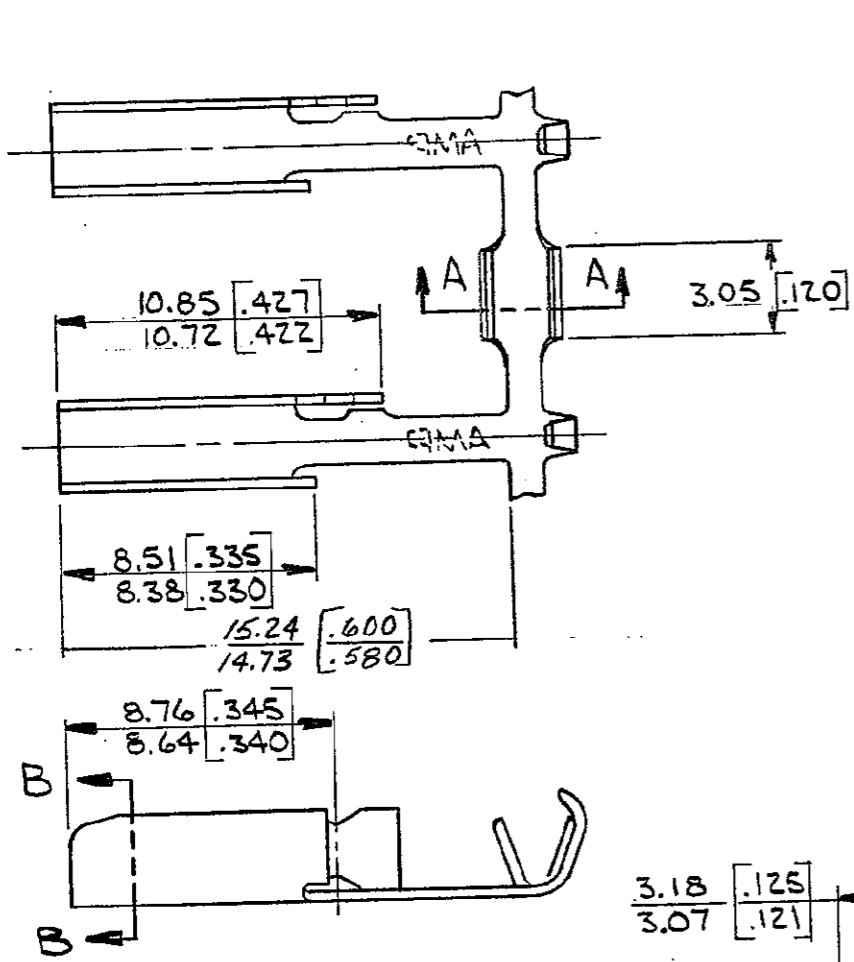


THIS DRAWING IS UNPUBLISHED. RELEASED FOR PUBLICATION, 19
 © COPYRIGHT 19 BY AMP INCORPORATED, HARRISBURG, PA. ALL INTERNATIONAL RIGHTS RESERVED. AMP PRODUCTS MAY BE COVERED BY U.S. AND FOREIGN PATENTS AND/OR PATENTS PENDING.

REVISIONS				
NO.	DATE	ZONE	DESCRIPTION	APPROVED
1	12/21/82	A	RELEASED FOR PROG. PER P.A.R.	SS/GY
2	9-25-84	B	AMP STAMP AF-0537	RLT/GY
3	29/SEP/97	C	REVISED PER 0210-0391-97	PMF



1. CONTINUOUS STRIP ON REEL WITH TERMINALS LOCATED ON 10.57 [.416] CENTERS.
2. 63257-2 REVERSED REEL.
3. SUFFIX LETTER MUST BE USED ONLY WHEN ORDERING APPLICATOR TOOLING.

1.02-1.78 [.040-.070]	0.3-0.9 #22-18	63257-2R	LEFT HAND	63257-2
		63257-1R	RIGHT HAND	63257-1
INSUL RANGE	WIRE RANGE	TERMINAL No. BENT Δ 3	REMARKS	PART NO
UNLESS OTHERWISE SPECIFIED DIMENSIONS ARE IN INCHES. MM TOLERANCES ON: DECIMALS \pm .025 [.010] ANGLES \pm		CONTRACT NO 11-4-82	AMP AMP INCORPORATED Harrisburg, Pa.	
MATERIAL BRASS 0.30 THK. [.012]		CHK 11-5-82		
FINISH TIN		APPD 11-8-82	CONTACT	
		APPD 11/9/82		
		DSGN APPD	SIZE B	FSCM NO 00779
		OTHER APPD	DRAWING NO 63257	
			SCALE 1:1	SHEET

METRIC

CUSTOMER DRAWING

AF 50