

Digi TransPort® WR11

Compact 3G/4G LTE Enterprise Router

Secure 3G/4G LTE cellular router for retail, point-of-sale and gaming applications.



Overview

The Digi TransPort WR11 gives network management professionals a secure, reliable, and low-cost 3G/4G LTE connection to retail terminals for signage, kiosk, vending and gaming applications.

By focusing on the critical features for payment card and other secure transactions, the router makes it possible for managed service providers (MSPs) to grow their business by taking advantage of the increasing ubiquity and security of global cellular networks.

Digi TransPort WR11 comes with Digi's enterprise software configuration by default, which means network administrators have the routing, security, VPN and stateful firewall tools they need to create a PCI compliant network right out of the box.

Network administrators are further empowered with Digi SureLink™ as well as Digi Remote Manager™, which gives the ability to maintain uniform configuration for PCI compliance and also troubleshoot problematic installations.

With the addition of the WR11, the Digi TransPort WR family now offers network management professionals a full suite of routers for every retail or point-of-sale application, from simple Ethernet connections (WR11), Ethernet and legacy serial devices (WR21) and more added-value applications like DSL backup and Wi-Fi access point creation (WR41 and WR44).

Related Products



Digi TransPort WR21

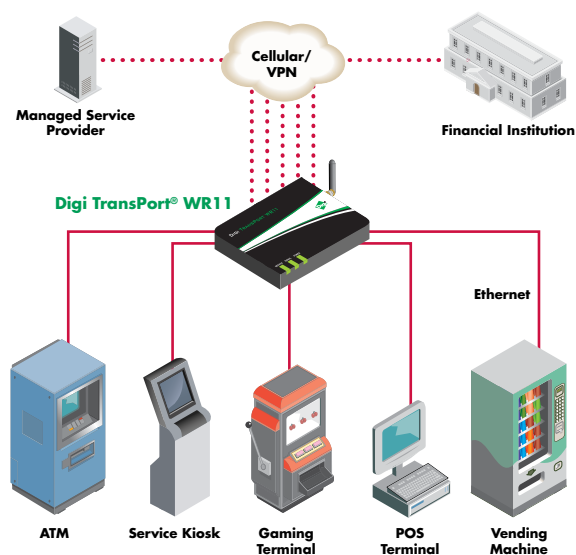


Digi Remote Manager



Digi TransPort WR44

Application Highlight



Features/Benefits

- Enterprise routing and security capabilities support PCI compliance across a network of distributed terminals
- Digi SureLink provides a persistent cellular network connection for reliable content delivery
- Device Profile Manager lets network administrators set golden configuration standards and audit devices to ensure compliance
- Device Health Dashboard reports and alarms on performance metrics like signal strength, packet loss and connection history
- Advanced stateful firewall and failover helps the WR11 self-heal networking problems
- Digi's 5-year warranty and global footprint support long-term global deployments



Specifications

Digi TransPort® WR11

Wireless WWAN*	
LTE – North America (L6)	700/850/1700 (AWS)/1900 MHz; 2G/3G fall back to 850/1900 MHz; Transfer Rate (max): 50 Mbps Up, 100 Mbps Down
LTE – Verizon (L8)	700/1700 (AWS) MHz; No 2G/3G fall back; Transfer Rate (max): 50 Mbps Up, 100 Mbps Down
LTE – EMEA/APAC (L7)	800/1800/2600 MHz; 3G fall back to 850/900/2100 MHz and 2G fall back to 850/900/1800/1900 MHz; Transfer Rate (max): 50 Mbps Up, 100 Mbps Down
HSPA+ (U9)	850/900/1700 (AWS)/1900/2100 MHz; Transfer Rate (max): 5.76 Mbps Up, 21 Mbps Down
EVDO	CDMA 1xRTT – 900/1800 MHz; EVDO-A/1xRTT; Transfer rate (max): 1.8 Mbps up, 3.1 Mbps Down
Connectors	1 x 50 Ω SMA (Center pin: female); 2x connectors for LTE models
SIM Slots	2, Mini-SIM (2FF)
SIM Security	Snap fit SIM slot cover plate
Ethernet	
Ports	1
Standard	IEEE 802.3
Physical Layer	10/100 Base-T
Data Rate	10/100 Mbit/s
Mode	Full or Half duplex
Interface	Auto MDI/MDIX
Management	
Remote Management	Digi Remote Manager (cloud based); SNMP v1/v2c/v3 (user installed/managed)
Local Management	Web interface (HTTP/HTTPS); CLI (Telnet, SSH, SMS)
Management/Troubleshooting Tools	FTP, SFTP, SCP; Protocol analyzer with PCAP for Wireshark; Event logging with Syslog and SMTP; NTP/SNTP
Memory	20 MB RAM, 10 MB file space
Power	
Input	5 VDC (power supply with barrel connector included)
Consumption	Typical: 3.5 W; Max: 15 W
Connector	Locking barrel connector
Physical	
Dimensions (L x W x H)	3 in x 4 in x 1 in (7.62 cm x 10.16 cm x 2.54 cm)
Weight	0.25 lb (0.11 kg)
Status LEDs	Power On, WWAN Signal Strength, WWAN Service
Enclosure Material/Rating	Polycarbonate
Environmental	
Operating Temperature **	0° C to 40° C (32° F to 104° F)
Storage Temperature	-40° C to +85° C
Relative Humidity	5% to 95% (non-condensing)
Ethernet Isolation	1.5 kV RMS
Approvals	
GSM/UMTS	PTCRB
CDMA/EV-DO	CDG
Cellular Carriers	Certified by most major carriers. See www.digi.com for a full list.
Safety	UL 60950, CSA 22.2 No. 60950, EN60950
Emissions/Immunity	CE, FCC Part 15 Class B, AS/NZS CISPR 22, EN55024, EN55022 Class B
Warranty	
Product Warranty	5 years

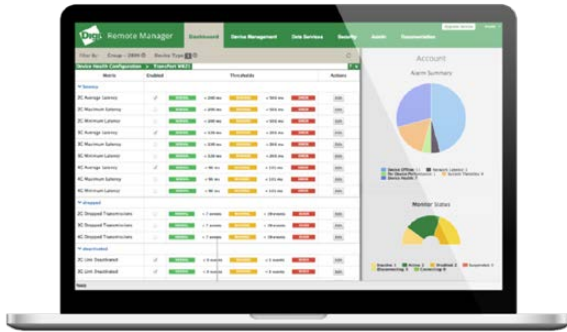
* Transfer rates are theoretical and network operator dependent

** Reduced cellular performance may occur outside of -20° C to +60° C. Standard temperature power supplies may reduce temperature range.

Enterprise Software

Protocol Support	HTTP, HTTPS, FTP, SFTP, SSL, SMTP, Device Cloud SNMP, SNMP (v1/v2c/v3), SSH, Telnet and CLI for web management; remote management via Digi Remote Manager; SMS management, protocol analyzer, ability to capture PCAP for use with Wireshark; DynDNS, Dynamic DNS client compatible with BIND9/No-IP/DynDNS
Security/VPN	IP filtering, Stateful inspection firewall with scripting, address and port translation; VPN: IPSec with IKEv1, IKEv2, NAT Traversal; SSL, SSLv2, SSLv3, FIPS 197, Open VPN client and server; PPTP, L2TP; VPN Tunnels: 5. Cryptology: SHA-1, MD5, RSA; Encryption: DES, 3DES and AES up to 256-bit (CBC mode for IPsec); Authentication: RADIUS, TACACS+, SCEP for X.509 certificates; Content Filtering (via 3rd party); MAC Address Filtering; VLAN support
Routing/Failover	IP pass-through; NAT, NATP with IP Port Forwarding; Ethernet Bridging; GRE; Multicast Routing; Routing Protocols: PPP, PPPoE, RIP (v1, v2) OSPF, SRI, BGP, iGMP routing (multicast); IPv6 (firmware upgradable); RSTP (Rapid Spanning Tree Protocol); IP Failover: VRRP, VRRP+TM; Automatic failover/ failback to second GSM network/Standby APN
Other Protocols	DHCP; Dynamic DNS client compatible with BIND9/No-IP/DynDNS; QoS via TOS/DSCP/WRED

Digi Remote Manager



Capabilities

- Centralized management of remote devices over 3G/4G LTE
- Define standard configurations and automatically monitor individual devices for PCI security compliance
- Report and alert on performance statistics, including connection history, signal quality, latency, data usage and packet loss.
- No servers or applications to operate & maintain
- Complete tasks for your entire device network in minutes
- Edit configurations & update firmware for your individual devices or groups
- Monitor the status and location of your remote device via a web browser
- Active or deactivate cellular lines and monitor data to ensure you never incur overage charges

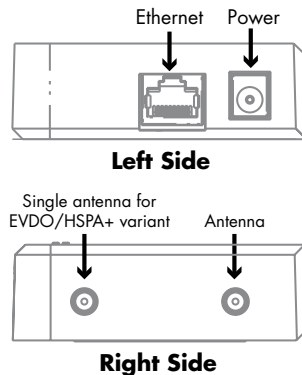
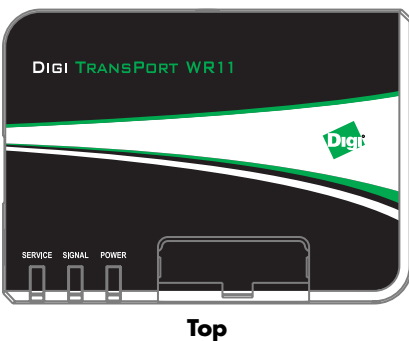
Infrastructure

- Hosted in multiple commercial-grade SAS 70 certified facilities in North America and Europe
- Superior availability, operating to 99.9% or greater
- Open APIs available to support application development

Security

- Certified SSAE-16 and ISO27001 facilities
- Member of the Cloud Security Alliance
- Over 175 Security Controls in place to protect your data
- Enables compliance with security frameworks like PCI, HIPAA, NIST and more
- Earned SkyHigh's Cloud Trust Program highest ranking of Enterprise-Ready

Product Images and Part Numbers



Part Number	Description
WR11-U900-DE1-SW	Digi TransPort WR11, GSM, with International Wall Plug Kit
WR11-C100-DE1-SU	Digi TransPort WR11, Sprint
WR11-L600-DE1-SU	Digi TransPort WR11, North America LTE, HSPA+ fallback
WR11-L700-DE1-SW	Digi TransPort WR11, EMEA/APAC LTE, HSPA+ fallback
WR11-L800-DE1-SU	Digi TransPort WR11, Verizon LTE Single Mode

You can purchase with confidence knowing that Digi is always available to serve you with expert technical support and our industry leading warranty. For detailed information visit www.digi.com/support.

91002585
A9/815

**Digi International
Worldwide HQ**
877-912-3444
952-912-3444
www.digi.com

**Digi International
France**
+33-1-55-61-98-98
www.digi.fr

**Digi International
Japan**
+81-3-5428-0261
www.digi-intl.co.jp

**Digi International
Singapore**
+65-6213-5380

**Digi International
China**
+86-21-50492199
www.digi.com.cn



www.digi.com