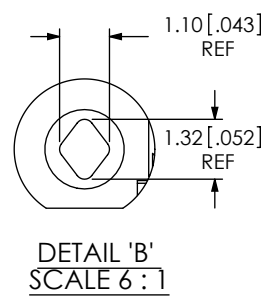
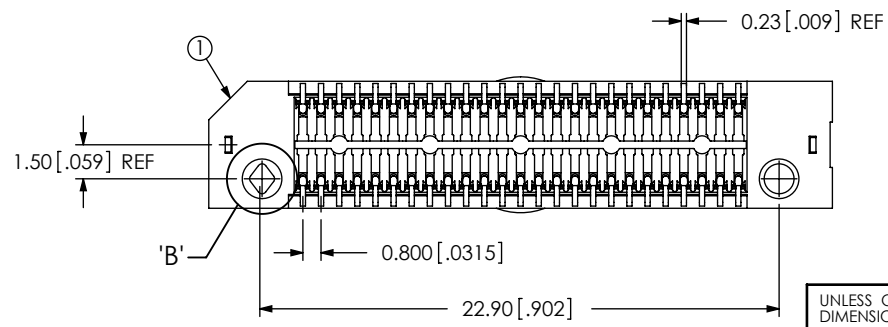
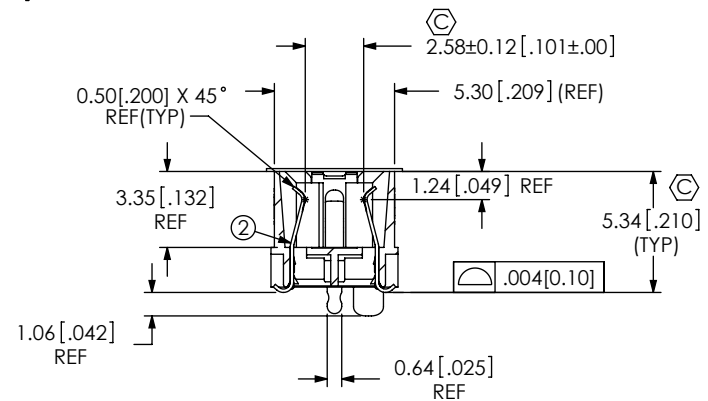
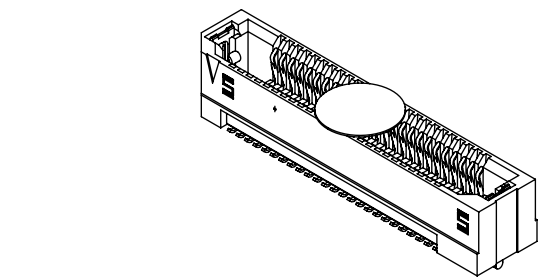
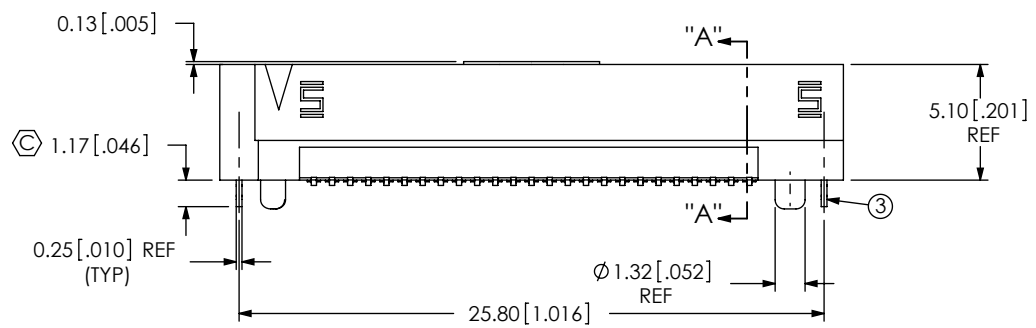
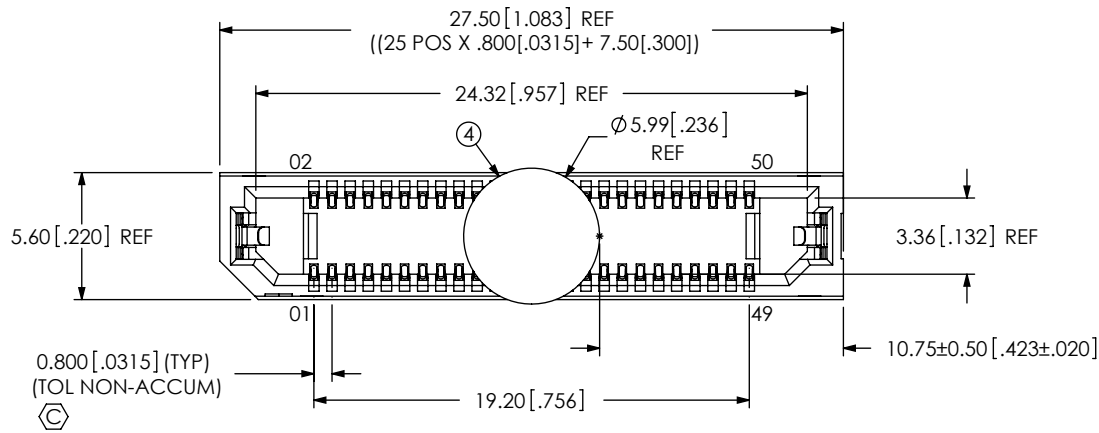


NOTES:

1. SET UP ASP PART NUMBER FOR INDUSTRY STANDARD.
2. (C) REPRESENTS A CRITICAL DIMENSION.
3. MAXIMUM BURR ALLOWANCE: 0.015[0.038]
4. MINIMUM PUSHOUT FORCE: .5 LB
5. PARTS TO BE PACKAGED IN TAPE AND REEL.
6. FOR QUANTITIES UP TO 49 PEICES, NO LEADER, TRAILOR, OR EIA-481-D REEL WILL BE SUPPLIED. FOR QUANTITIES OF 50-124 PIECES, NO LEADER OR TRAILOR WILL BE SUPPLIED.

DO NOT SCALE FROM THIS PRINT



ITEM NO.	PART NUMBER	QUANTITY	MATERIAL
1	ERF8-025-05.0-DV-L	1.0000	VECTRA E130i, COLOR: BLACK
2	C-211-05.0-S	50.000	BeCu, ALLOY 390 HT
3	WT-30-01-F	2.0000	BeCu, #25, 1/2 HT
4	K-DOT-.236-.343-.005	1.0000	POLYIMIDE FILM
5	CT-ERF8016MS	1.0000	CONDUCTIVE POLYMER

UNLESS OTHERWISE SPECIFIED, DIMENSIONS ARE IN MILLIMETERS
 TOLERANCES ARE:
 DECIMALS ANGLES
 .XX: ±.3[.01]
 .XXX: ±.13[.005]
 .XXXX: ±.051[.0020]

PROPRIETARY NOTE
 THIS DOCUMENT CONTAINS INFORMATION CONFIDENTIAL AND PROPRIETARY TO SAMTEC, INC. AND SHALL NOT BE REPRODUCED OR TRANSFERRED TO OTHER DOCUMENTS OR DISCLOSED TO OTHERS OR USED FOR ANY PURPOSE OTHER THAN THAT WHICH IT WAS OBTAINED WITHOUT THE EXPRESSED WRITTEN CONSENT OF SAMTEC, INC.

samtec

520 PARK EAST BLVD, NEW ALBANY, IN 47150
 PHONE: 812-944-6733 FAX: 812-948-5047
 e-Mail: info@SAMTEC.com code 55322

DESCRIPTION: .8MM EDGE RATE SOCKET ASM

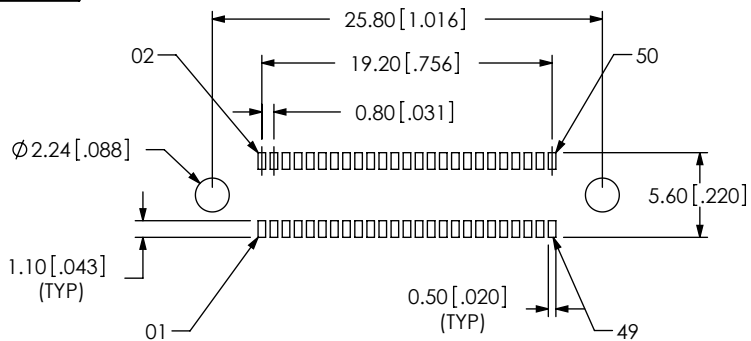
DWG. NO. ASP-148422-01

BY: TAMMY W. 06/12/09 SHEET 1 OF 2

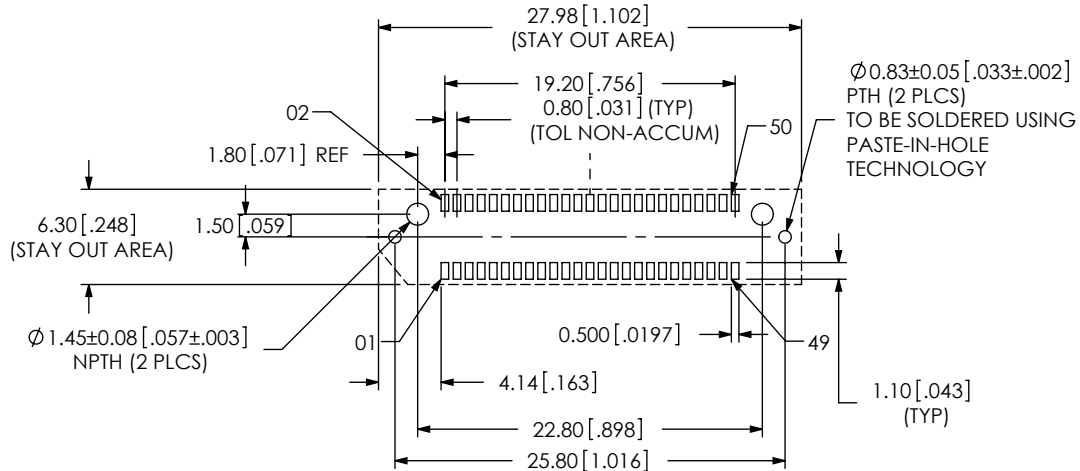
DO NOT SCALE DRAWING SHEET SCALE: 3:1

PLATING:
 CONTACTS:
 CONTACT AREA: .000030 GOLD OVER .000050 NICKEL
 REMAINDER: .000200 REF TIN OVER .000050 NICKEL
 WELD TAB: .000003 GOLD OVER .000050 NICKEL

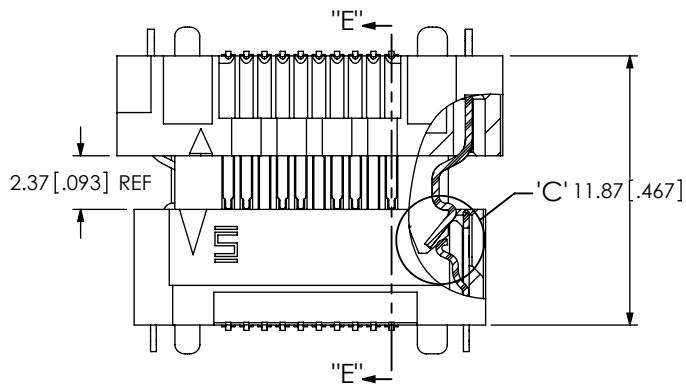
F:\DWG\MISC\MKTG\ASP-148422-01-MKT.SLDDRW



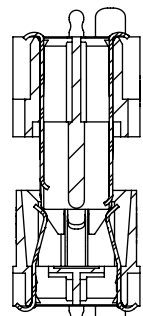
RECOMMENDED STENCIL LAYOUT



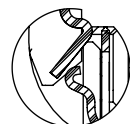
RECOMMENDED PCB LAYOUT



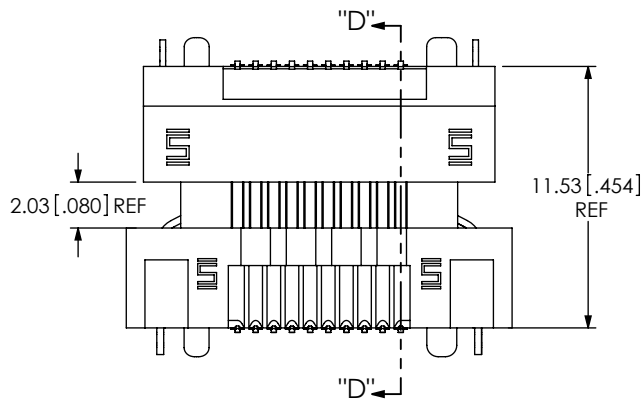
LATCH ENGAGING VIEW



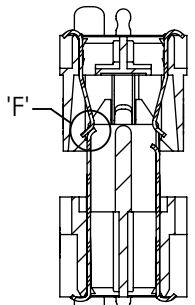
SECTION "E"-"E"
SCALE 3 : 1



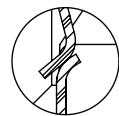
DETAIL 'C'



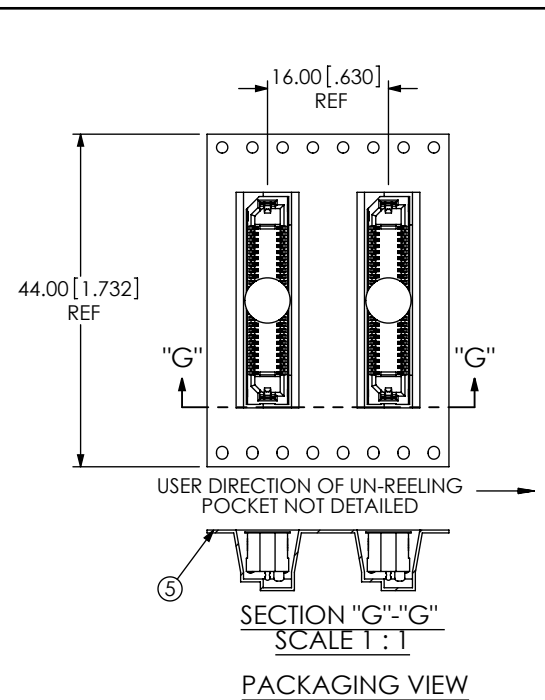
PIN ENGAGING VIEW



SECTION "D"-"D"
SCALE 3 : 1



DETAIL 'F'
SCALE 8 : 1



SECTION "G"-"G"
SCALE 1 : 1

PACKAGING VIEW

PROPRIETARY NOTE

THIS DOCUMENT CONTAINS INFORMATION CONFIDENTIAL AND PROPRIETARY TO SAMTEC, INC. AND SHALL NOT BE REPRODUCED OR TRANSFERRED TO OTHER DOCUMENTS OR DISCLOSED TO OTHERS OR USED FOR ANY PURPOSE OTHER THAN THAT WHICH IT WAS OBTAINED WITHOUT THE EXPRESSED WRITTEN CONSENT OF SAMTEC, INC.

SHEET SCALE: 4:1



520 PARK EAST BLVD, NEW ALBANY, IN 47150
PHONE: 812-944-6733 FAX: 812-948-5047
e-Mail info@SAMTEC.com code 53322

DESCRIPTION:
.8MM EDGE RATE SOCKET ASM

DWG. NO.
ASP-148422-01

BY: TAMMY W. 06/12/09

SHEET 2 OF 2