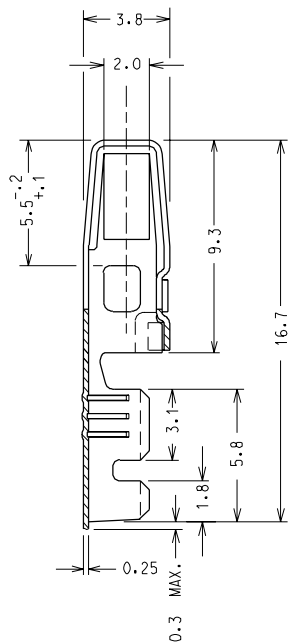
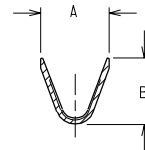


SENDO DI SVOLGIMENTO DALLA BOBINA  
DEREELING DIRECTION

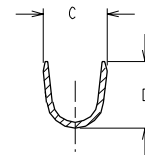
(N.° PEZZI PER BOBINA: 4000)  
(N. OF TERMINALS PER REEL: 4000)



SEZIONE A - A  
SECTION A - A



SEZIONE B - B  
SECTION B - B



MATERIALE: BRONZO FOSFOROSO  
MATERIAL: PHOSPHOR BRONZE

FINITURA: PRESTAGNATO  
PLATING: PRE-TINNED

CARATTERISTICHE DI PRODOTTO SECONDO PS 94509  
PRODUCT CHARACTERISTICS ACCORDING TO PS 94509 E

CODICE P/N	SEZIONE CAVO WIRE SIZE	Ø ISOLANTE INS. RANGE	A	B	C	D
94509-1103	0.35 - 0.50	1.70 MAX	1.9	2.2	2.7	2.7
94509-1203	0.75 - 1.00	2.10 MAX	3.0	2.9	2.8	2.9

EC NO. Z9-065 DRWNS. BARBIERI 08-10-98 CHK: S. SORATO 08-10-98 APPR: R. MARTUCCI 08-10-98	QUALITY SYMBOLS MAJOR M SIGNIF. S CRITICAL C	GENERAL TOLERANCES: (UNLESS SPECIFIED)		SCALE 5:1	DESIGN UNITS <input checked="" type="checkbox"/> mm <input type="checkbox"/> INCH	DIMENSIONS: <input type="checkbox"/> mm <input type="checkbox"/> INCH <input type="checkbox"/> mm <input checked="" type="checkbox"/> mm ONLY	SHT	REV
		4 PLACES ±0.1	±0.1	DRAWN BY & DATE S. BARBIERI 18-07-90	FIRST ANGLE PROJECTION	TITLE: CONTATTO A FORCELLA DIRITTO - SPESSORE NOMIN. DEL MASCHIO: 2.1 mm - STRAIGHT FORK TERMINAL - TAB SIZE: 2J mm -		
REV	DESCRIPTION	3 PLACES ±0.1	±0.1	CHECKED BY & DATE	APPROVED BY & DATE M. PREVIATO 18-07-90	MATERIAL NO. SEE TABLE	DRAWING NO. SD-94509-008	SHEET NO. 1/1
		2 PLACES ±0.1	±0.1	CAD FILENAME 94509008.DGN	ANGULAR: ± 3°			
D		1 PLACE ±0.2	±0.2	DRAFT WHERE APPLICABLE MUST REMAIN WITHIN DIMENSIONS		THIS DRAWING CONTAINS INFORMATION THAT IS PROPRIETARY TO MOLEX INCORPORATED AND SHOULD NOT BE USED WITHOUT WRITTEN PERMISSION.		SIZE A3