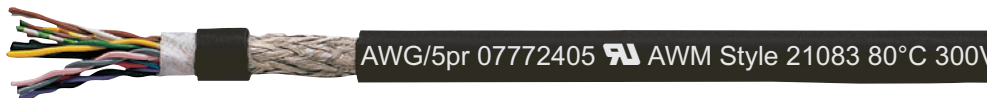


CONTINUOUS FLEX CABLES

SD 960 CY TP Continuous flex twisted pairs shielded data cable for small bending radius



Marking for SD 960 CY TP 07772405:

SAB BRÖCKSKES · D-VIERSEN · 07770525 5 x 2 x 0.25 mm² SD 960 CY TP 24 AWG/5pr 07772405 AWM Style 21083 80°C 300V

SD 960 CY TP is a very flexible, shielded multi-pair 80°C, 300 V cable designed for continuous flex applications. An overall tinned copper shield is recommended whenever electrical interference distorts signal transmission, or when EMI emissions need to be suppressed. The SD 960 CY is designed for use on gantry robots, cable tracks, pick and place units, automated handling equipment, machine tools, conveyor systems.

Construction:

Conductor:	bare copper strands, extra fine wires
Insulation:	PVC, TI2 acc. to DIN VDE 0281 part 1 + HD 21.1
Color code:	acc. to color code US 3 see page O/27
Stranding:	conductors twisted to pairs, pairs twisted in specially adjusted layering with non-woven tape over the outer layer
Screen:	tinned copper braiding
Jacket material:	PVC, TM2 acc. to DIN VDE 0281 part 1 + HD 21.1
Jacket color:	black

Outstanding features:

- very good flexibility
- small bending radius
- reinforced outer jacket
- UV resistant jacket

Technical data:

Peak operating voltage:	DIN VDE: max. 350 V UL: 300 V
Testing voltage U:	1500 V acc. to DIN VDE 0472 part 509 conductor/screen 1200 V
Min. bending radius continuous flexing:	7.5 x O.D.
Radiation resistance:	8 x 10 ⁷ cJ/kg
Temperature range static:	DIN VDE -40/+70°C UL: up to +80°C
flexing:	+5/+70°C
Burning characteristics:	flame retardant and self-extinguishing acc. to IEC 60332-1-2 + EN 60332-1-2, UL VW-1
Oil resistance:	acc. to our internal standard see page O/29
Absence of harmful substances:	acc. to RoHS directive of the European Union see page O/30

item no.	no. of pairs	nominal outer-ø inch	nominal outer-ø mm	cable weight ≈ lbs/mft
▶ 26 AWG (≈ 18/38) • 0.14 mm²				
07772602	2	0.220	5.6	26
07772603	3	0.252	6.4	35
07772604	4	0.287	7.3	44
07772605	5	0.311	7.9	52
07772607	7	0.335	8.5	67
07772610	10	0.390	9.9	79
07772614	14	0.453	11.5	101
07772618	18	0.488	12.4	127
07772625	25	0.555	14.1	155
▶ 24 AWG (≈ 32/38) • 0.25 mm²				
07772402	2	0.248	6.3	36
07772403	3	0.272	6.9	42
07772404	4	0.311	7.9	52
07772405	5	0.339	8.6	63
07772407	7	0.362	9.2	82
07772410	10	0.425	10.8	100
07772414	14	0.496	12.6	132
07772418	18	0.535	13.6	163
07772425	25	0.618	15.7	217

item no.	no. of pairs	nominal outer-ø inch	nominal outer-ø mm	cable weight ≈ lbs/mft
▶ 22 AWG (≈ 42/38) • 0.34 mm²				
07772202	2	0.260	6.6	38
07772203	3	0.283	7.2	47
07772204	4	0.327	8.3	59
07772205	5	0.354	9.0	71
07772207	7	0.382	9.7	97
07772210	10	0.449	11.4	114
07772214	14	0.524	13.3	151
07772218	18	0.575	14.6	202
07772225	25	0.654	16.6	259
▶ 20 AWG (≈ 28/34) • 0.25 mm²				
07772002	2	0.291	7.4	48
07772003	3	0.339	8.6	70
07772004	4	0.386	9.8	86
07772005	5	0.425	10.8	108
07772007	7	0.461	11.7	138
07772010	10	0.555	14.1	187
07772014	14	0.657	16.7	251
07772018	18	0.705	17.9	308
07772025	25	0.795	20.2	387

Other dimensions and colors are possible on request.