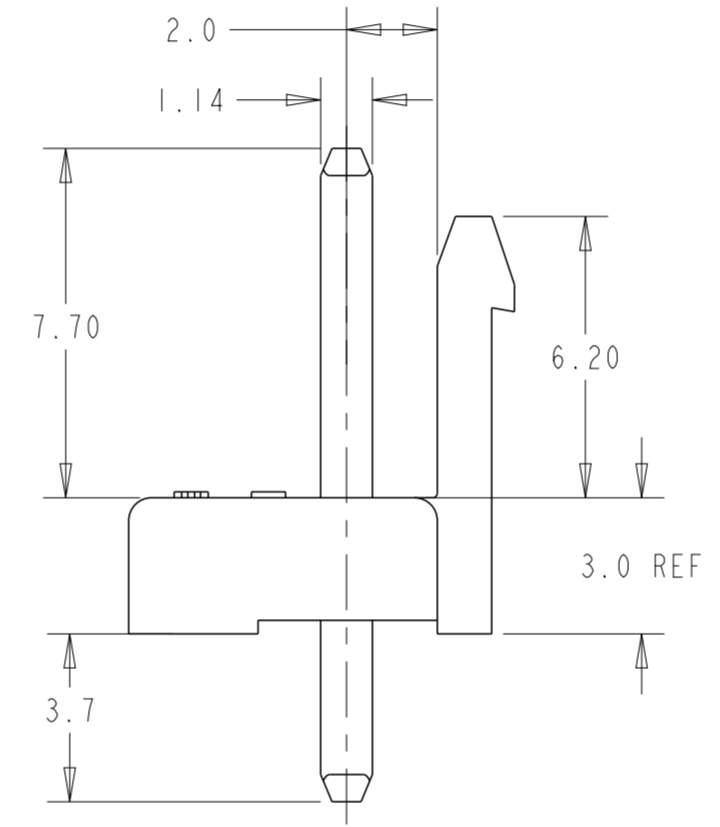
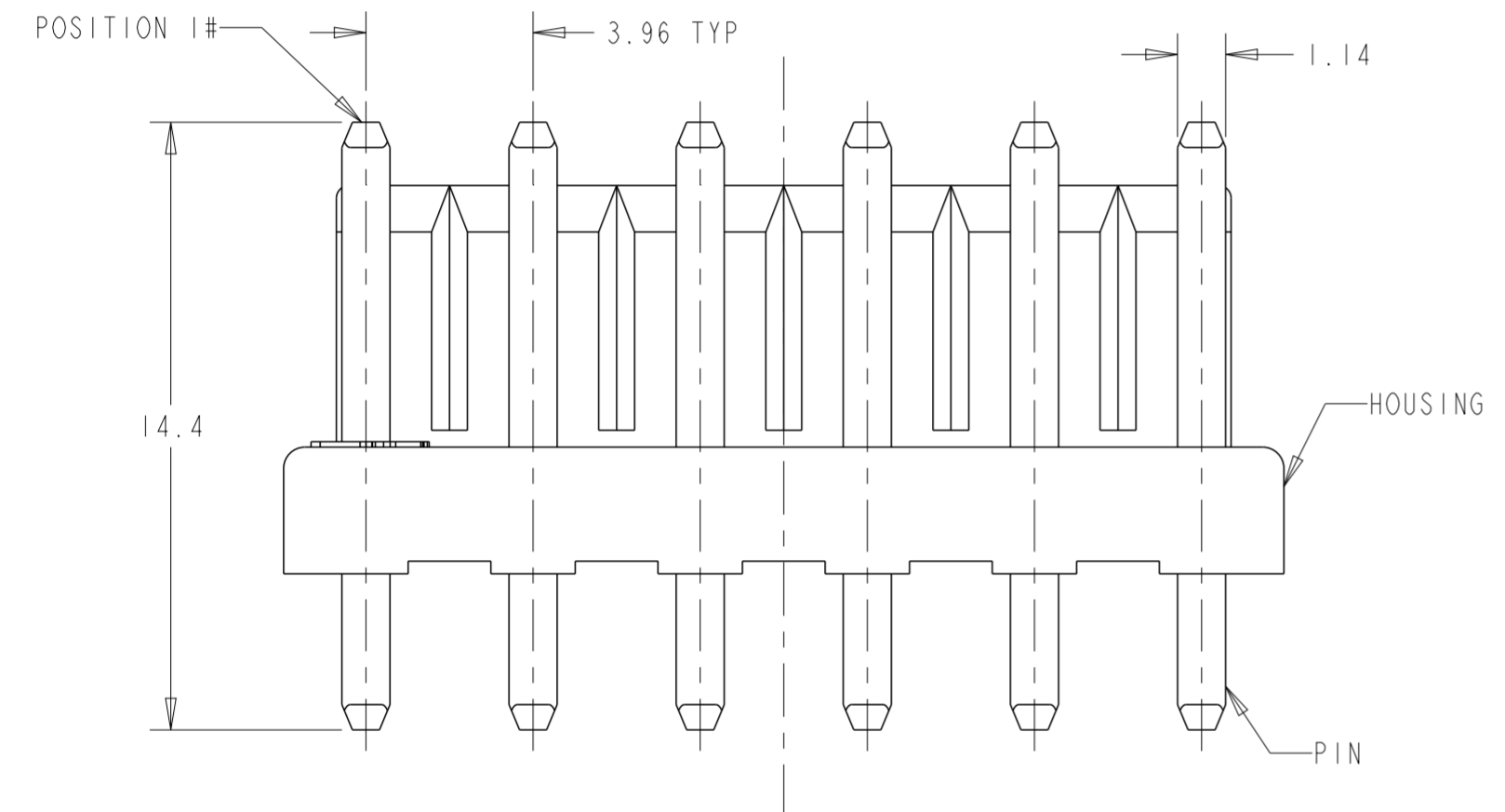
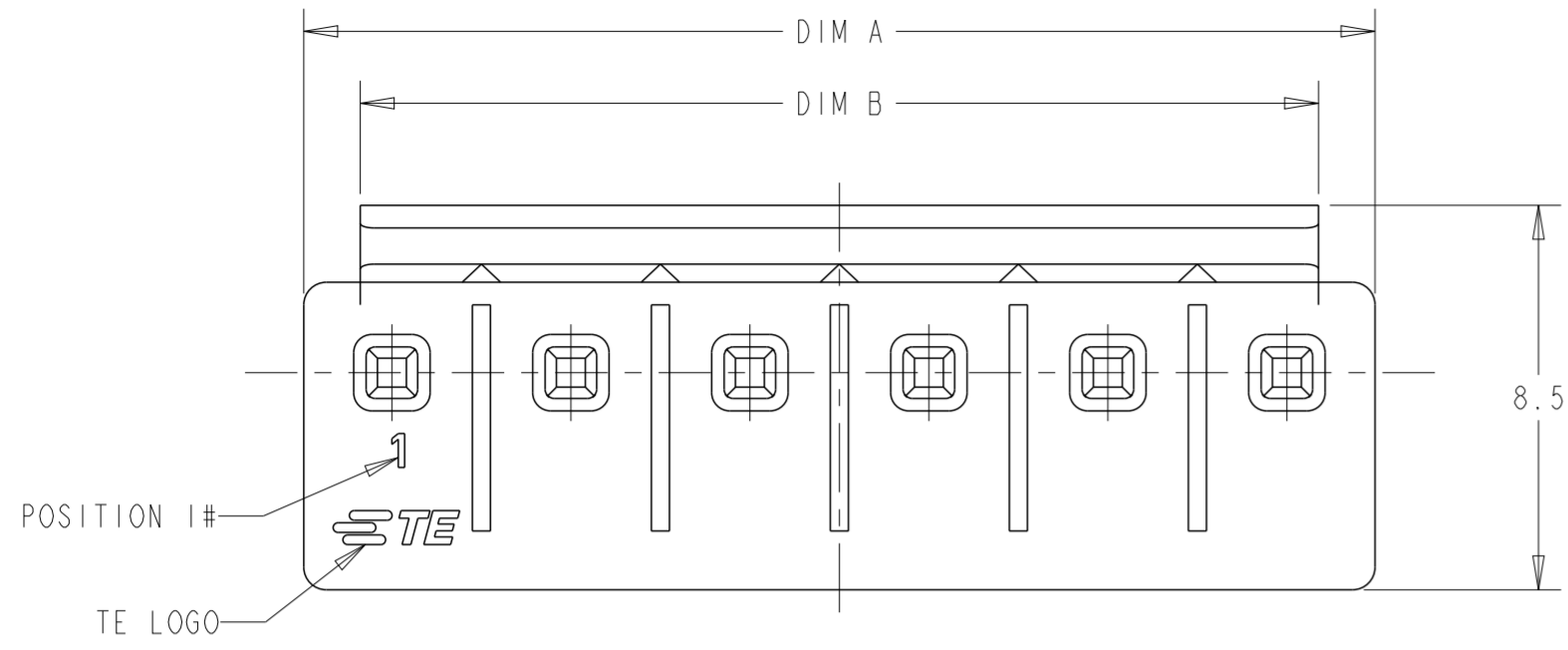
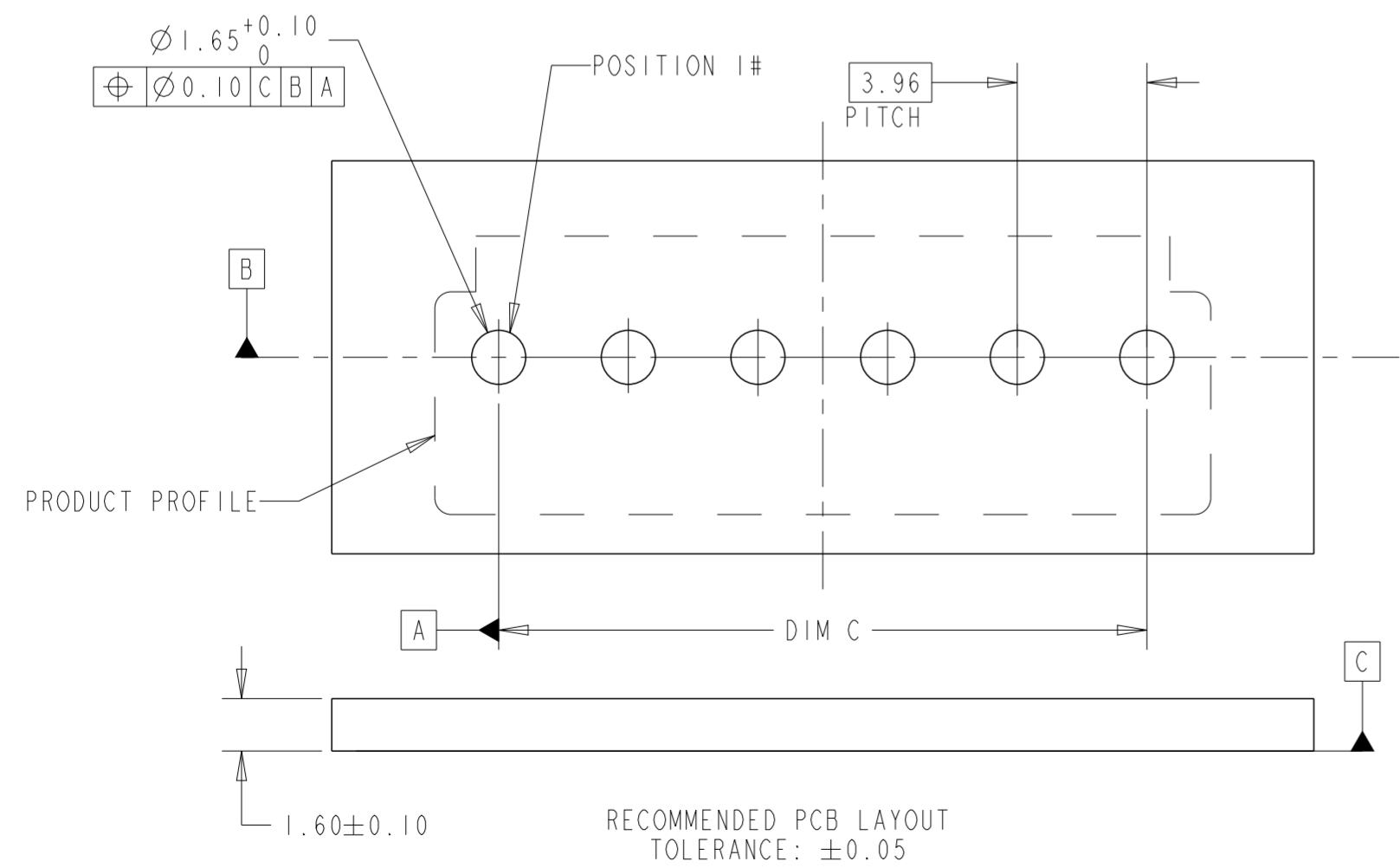


REVISIONS				
P	LTR	DESCRIPTION	DATE	APVD
A		REVISED PER ECN-22-148353	07APR2022	WH LC



- 1. MATERIAL:
HOUSING: HIGH PERFORMANCE RESIN, UL94-V0 COLOR: NATURAL
PIN CONTACT: COPPER ALLOY, 2.0µm MIN TIN OVERALL
- 2. DIMENSIONS SHOWN REPRESENT PRODUCT IN DRY, AS MOLDED, CONDITION.
- 3. RECOMMENDED MATING PART: []-2371377-[]
- 4. PACKAGING: LOOSE PIECE
- 5. PER IEC 60335-1 SECT. 30, GWEPT 750°C, NO FLAME OR Te-Ti≤2S



39.60	41.00	43.50	11	1-2375239-1
35.64	37.04	39.54	10	1-2375239-0
31.68	33.08	35.58	9	2375239-9
27.72	29.12	31.62	8	2375239-8
23.76	25.16	27.66	7	2375239-7
19.80	21.20	23.70	6	2375239-6
15.84	17.24	19.74	5	2375239-5
11.88	13.28	15.78	4	2375239-4
7.92	9.32	11.82	3	2375239-3
3.96	5.36	7.86	2	2375239-2
DIMC	DIM B	DIM A	POSITION	PART NO.

2375239-6 SHOWN

THIS DRAWING IS A CONTROLLED DOCUMENT.		DWN W. HUO	04FEB2022	TE Connectivity	
DIMENSIONS: mm		CHK L. CHEN	07FEB2022		
TOLERANCES UNLESS OTHERWISE SPECIFIED:		APVD D. ZHANG	07FEB2022	NAME HEADER ASSEMBLY, UNSHROUDED GWT, VERTICAL, SINGLE ROW, EP3.96	
0 PLC ±		PRODUCT SPEC 108-2297		SIZE A2	
1 PLC ±0.5		APPLICATION SPEC 114-13265		CAGE CODE 00779	
2 PLC ±0.30		WEIGHT -		DRAWING NO C-2375239	
3 PLC ±		CUSTOMER DRAWING		RESTRICTED TO -	
4 PLC ±		SCALE N/A		SHEET OF	
ANGLES ±3°		SHEET OF		REV A	
FINISH		SCALE N/A		SHEET OF	

RECOMMENDED PCB LAYOUT
TOLERANCE: ±0.05