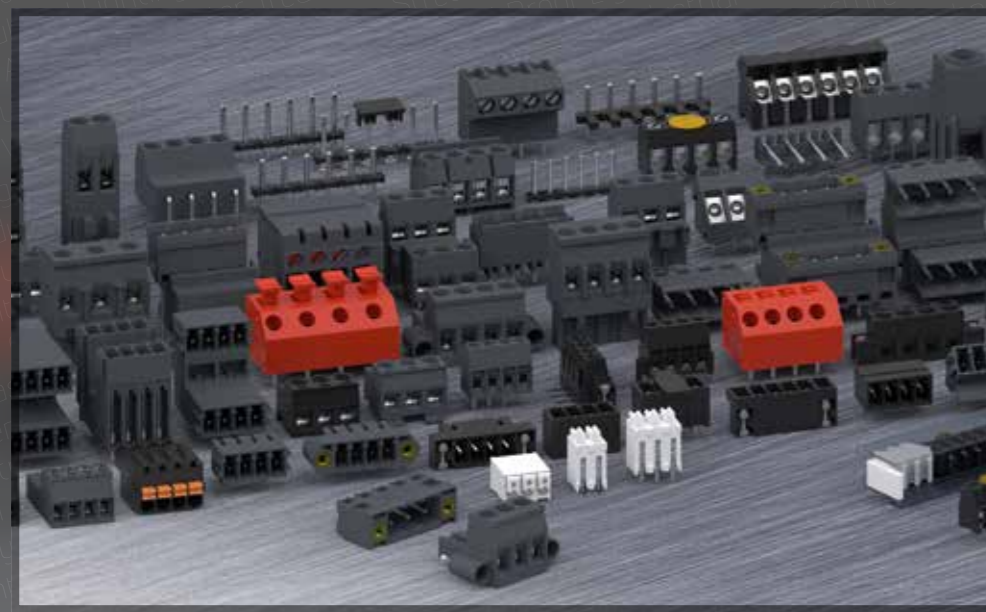


WECO

PCB connectors and plug-in connector systems

PRODUCT SELECTION GUIDE



Overview



Connectors for Printed Circuit Boards

WECO PCB connectors are available in socket terminal style with either elevator clamping mechanism or head contact, as well as additional configurations with tab connectors or as screwless connector systems. Plug connectors are specially designed for peripheral devices.



Plug-In connector systems

WECO plug-in connector systems are either screw or screwless. Corresponding pin strips are available for the plug-in connectors. Both components of these connector systems are available in different grid dimensions, optionally with lateral flange versions, as tier variants as well as in different mating directions.



SMD & THR

Our connection systems are available for both Surface Mount Technology (SMT) and Through-Hole-Technology (THR) in reflow soldering for higher temperature resistance. WECO's SMD and THR products are trademarked under



a unique patented technology available in either Tape-on-Reel or bar magazine for automated assembly processes.



Terminal strips

This family includes terminal strips offered in screw, soldered, with plug or screwless connection. They are available in multiple pole sizes, pitch and accommodate wire from 1.5 mm² (14 AWG) to 35 mm² (2 AWG) and capable of handling current up to 115 Amps. Housings are polyamide plastic material and meet the ball pressure test at 125°C according to VDE 0470, a key requirement in many IEC and VDE regulations for insulators.



Tab connectors

These connectors allow for quick connections to "tab receptacles" commonly used in HVAC and field installation. WECO offers a multitude of sizes and configurations such as Multi-Point Tab Connections including tab/solder connections, flat plug coupler and space saving Tiered version offering increased connection density.



Ceramic Terminal Blocks

This family encompasses mantle terminals, ceramic terminal strips and terminals withstand high temperatures, are immune to humidity and corrosion resistant. They are available in multiple configurations and sizes and are designed for currents up to 160 A, depending on the series. Key applications are in intrinsically safe electrical equipment used in furnaces, ovens, engines, and shipbuilding.

Who we are ...



Connecting Industries for over 100 Years!

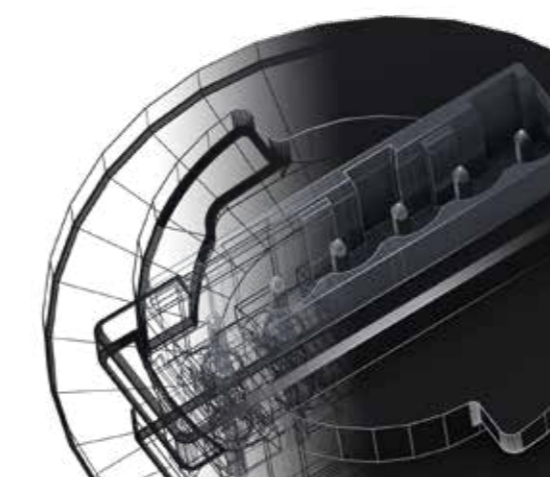
We are an engineering based company specialized in developing, manufacturing and optimizing electrical connection solutions for the energy, industrial, electrical, and electronic markets.

Founded 1921 in Germany, we are a global company headquartered in Montreal, Canada, with sales and manufacturing sites in seven key locations around the world.

We provide excellent value to our customers by developing, enhancing, and tailoring our connectors to their needs.

We strive to get it right the first time, every time, through continuous process improvement and fostering business relationships with customers.

Our streamlined manufacturing production delivers components that offer superior reliability, reduced footprint, and compact designs. These advantages have resulted in reduced lead times and greater efficiency, creating greater return on investment for the end user.



We are global ...

CANADA & NORTH AMERICA

GLOBAL HEADQUARTER
WECO Electrical Connectors Inc.
18 050 Trans-Canada Highway
Kirkland, QC Canada H9J 4A1
Phone: +1 514 694-9136
Fax: +1 514 694-0956
salesnorthamerica@wecoconnectors.com
www.wecoconnectors.com

EMEIA

WECO Contact GmbH
Donaustrasse 15
63452 Hanau, Germany
Phone: +49 6181 105 -145
Fax: +49 6181 105 -720
salesemeia@wecoconnectors.com
www.wecoconnectors.com

BRAZIL

WECO do Brasil LTDA.
Rua Edvino Antônio Deboni 225 Galpão 38
CEP 81.330-600
Curitiba, Brasil
Phone: +55 41 3278-9720
salesbrazil@wecoconnectors.com
www.wecoconnectors.com

LATIN AMERICA

WECO de México SA CV
Av. Vicente Guerrero #76
Col. Agua Blanca Industrial
Zapopan,
Jalisco, C.P. 45235, México
Phone: +52 33 3684 9066
Phone: +52 33 3804 0094
Fax: +52 33 3684 9066
saleslatam@wecoconnectors.com
www.wecoconnectors.com

ASIA PACIFIC

WECO Electrical (Shenzhen) Ltd.
Room 909A, North Block,
Cangsong Building, Tairan 6th Road,
Chegongmiao, Futian district,
Shenzhen 518040, China
Phone: +86 755 8280 7672 -0
Fax: +86 755 8280 7674
salesasia@wecoconnectors.com
www.wecoconnectors.com

ASIA PACIFIC

WECO Electrical Connectors Ltd.
Room 1105, New Commerce Centre
19 On Sum Street, Shatin
New Territory, Hong Kong
Phone: +852 2636 6252
Fax: +852 2559 3161
salesasia@wecoconnectors.com
www.wecoconnectors.com

wecoconnectors.com

© 2022 by WECO.

WECO® is a registered trademark.

Information provided in this document may be changed without prior notice.
Product Selection Guide "PCB connectors and plug-in connector systems" | 49 955 102 | EN | 04.05.2022

PCB connectors and plug-in connector systems

For more detailed product information, refer to the technical datasheets available on our website at wecoconnectors.com.

SELECTION (ORDER BY PITCH)



3.5 mm

110-A-111



210-A-111



930-THR



931-SLR-THR-1.1



5.0 mm

115-F-111



120-FEP-311



140-B-111



950-FL-DS



971-LH



971-SLR-THR-1.3



5.08 mm

978-DS



6.35 mm

940-DS



7.5 mm

122-A-111



9.52 mm / 10 mm

977-DS



10.16 mm / 12.7 mm

158-A-211



| | | | | | | | | | | | | | | | | |
|---------------------------|--------------------------------------|-------------------------------------|---|---|--------------------------------------|---|---|--------------------------------------|--|---|--|-------------------------------------|-------------------------------------|--------------------------------------|--|---|
| Pitch | 3,5 mm | 3,5 mm | 3,5 mm | 3,5 mm | 5 mm | 5 mm | 5 mm | 5 mm | 5 mm | 5 mm | 5 mm | 5,08 mm | 5,08 mm | 7,5 mm | 7,5 mm | 10,16 mm |
| Available number of poles | 2 - 24 | 2 - 24 | 2 - 12, 15 | 2 - 16 | 2 - 12 | 2 - 24 | 2 + 3 | 2 - 12 | 2 - 12 | 2 - 12 | 2 - 12 | 2 - 32 | 2 - 32 | 2 - 12 | 2 - 8 | 2 - 12 |
| Rated Cross Section | 1,5 mm ² / 16 AWG | 1 mm ² / 18 AWG | 1 mm ² / 18 AWG | --- | 1,5 mm ² / 16 AWG | 2,5 mm ² / 14 AWG | 1,5 mm ² / 16 AWG | 1,5 mm ² / 16 AWG | 2,5 mm ² / 14 AWG | --- | --- | 2,5 mm ² / 14 AWG | 1,5 mm ² / 16 AWG | 2,5 mm ² / 14 AWG | 2,5 mm ² / 14 AWG | 10 mm ² / 8 AWG |
| Rated Insulation Voltage | 130 V acc. to EN 60998-1 | 130 V acc. to EN 60998-1 | 130 V acc. to EN 60998-1 | 130 V acc. to EN 60998-1 | 250 V acc. to EN 60998-1 | 250 V acc. EN 61984 | 250 V acc. to EN 60998-1 | 250 V acc. to EN 60998-1 | 250 V acc. to EN 60998-1 | 320 V (III / 2) | 250 V acc. to EN 60998-1 | 320 V (320 V) (III / 2) | 250 V acc. to EN 60998-1 | 450 V acc. to EN 60998-1 | 630 V (III / 2) | 1000 V (III / 2) |
| Rated Current | 8 A | 12,5 A | 13,5 A | 6 A | 10 A | 12 A | 14 A | 6 A | 24 A | 10 A | 24 A | 24 A | 17,5 A | 12 A | 24 A | 57 A |
| Approvals | | | | | | | | | | | | | | | | |
| Description | Plug connector with screw connection | PCB connector with screw connection | PCB connector for THR with screw connection | Pin strip for THR with soldering/ plug-in area ø 1,1 mm | Plug connector with screw connection | Plug connector with screwless connection, Push-In | PCB connector with screw connection, interlocking, raised version | Plug connector with screw connection | PCB connector with screw connection, wire entrance vertical to PCB, pottable | Pin strip for THR with soldering/ plug-in area ø 1,3 mm | PCB connector with screw connection, large conductor space | PCB connector with screw connection | PCB connector with screw connection | Plug connector with screw connection | PCB connector with screw connection, with test holes | PCB connector with screw connection, tall version, extended wire entrance |

110-FEP-111



210-A-126-SMD



931-DS



934-THR-DS



120-A-111



120-M-221-SMD



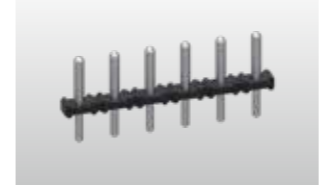
950-DS



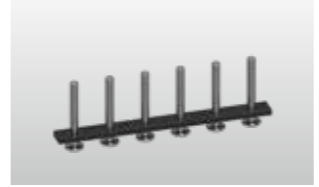
950-RFL-DS



971-SLR



971-SLT-SMD



121-D-111



964-T-DS



122-D-111



982-S



159-A-111



| | | | | | | | | | | | | | | | | |
|---------------------------|---|--|--|--|--------------------------------------|---|-------------------------------------|--|---|------------------------------------|---|---|---|--|-------------------------------------|----------------------------|
| Pitch | 3,5 mm | 3,5 mm | 3,5 mm | 3,5 mm | 5 mm | 5 mm | 5 mm | 5 mm | 5 mm | 5 mm | 5 mm | 5,08 mm | 5,08 mm | 7,5 mm | 9,52 mm | 12,7 mm |
| Available number of poles | 2 - 24 | 2 - 12 | 2 - 24 | 2 - 12 | 2 - 24 | 2 - 12 | --- | 2 - 32 | 2 - 12 | --- | 2 - 12 | 2 - 24 | 2 + 3 | 2 - 12 | 2 - 26 | 2 - 12 |
| Rated Cross Section | 1,5 mm ² / 16 AWG | 1 mm ² / 18 AWG | 1 mm ² / 18 AWG | 1 mm ² / 18 AWG | 2,5 mm ² / 14 AWG | --- | 1,5 mm ² / 16 AWG | 1,5 mm ² / 16 AWG | --- | --- | 2,5 mm ² / 14 AWG | 2,5 mm ² / 14 AWG | 2,5 mm ² / 14 AWG | 2,5 mm ² / 14 AWG | 2,5 mm ² / 14 AWG | 10 mm ² / 8 AWG |
| Rated Insulation Voltage | 160 V acc. EN 61984 | 130 V acc. to EN 60998-1 | 130 V acc. to EN 60998-1 | 130 V acc. to EN 60998-1 | 250 V acc. to EN 60998-1 | 130 V acc. to EN 60998-1 | 160 V (III / 2) | 250 V acc. to EN 60998-1 | 320 V (III / 2) | 130 V acc. to EN 60998-1 | 250 V acc. to EN 60998-1 | 250 V acc. to EN 60998-1 | 250 V acc. to EN 60998-1 | 450 V acc. to EN 60998-1 | 450 V acc. to EN 60998-1 | 1000 V (III / 2) |
| Rated Current | 8A | 12,5 A | 13,5 A | 10 A | 12 A | 12 A | 17,5 A | 6 A | 10 A | 10 A | 12 A | 12 A | 24 A | 12 A | 24 A | 57 A |
| Approvals | | | | | | | | | | | | | | | | |
| Description | Plug connector with screwless connection, Push-In | PCB connector for SMD with screw connection, with solder flanges | PCB connector with screw connection, wire entrance vertical to PCB | PCB connector for THR with screw connection 45°-angle to PCB | Plug connector with screw connection | Pin strip for SMD with plug-in direction vertical to PCB, with side walls | PCB connector with screw connection | Plug connector with screw connection, with locking device on the sides | Pin strip with soldering area ø 1 mm; plug-in area ø 1,3 mm | Pin strip for SMD with Low profile | Plug connector with screw connection, backside latching hooks | PCB connector with screw connection diagonal 45° to PCB, interlocking | Plug connector with screw connection, backside latching hooks | PCB connector with screw connection, 1 solder pin per pole | PCB connector with screw connection | |

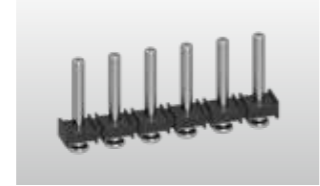
110-P-211



930-D-SMD



931-SLR-SMD-1.1



938-FLDS



120-D-121



140-A-126-SMD



950-D-SMD-DS



950-THR-DS



971-SLR-SMD-1.1



974-T-DS



121-M-121



980-D



122-M-111



983-D



Tailored Solutions

| | | | | | | | | | | | | | | | |
|---------------------------|---|---|--|---|--------------------------------------|--|---|---|--|--|--|---|--|---|------------------------------|
| Pitch | 3,5 mm | 3,5 mm | 3,5 mm | 3,5 mm | 5 mm | 5 mm | 5 mm | 5 mm | 5 mm | 5 mm | 5 mm | 5,08 mm | 6,35 mm | 7,5 mm | 10 mm |
| Available number of poles | 4 - 48 | 2 - 12 | 2 - 16 | 2 - 16 | 2 - 24 | 2 - 8 | 2 - 12 | 2 - 12 | 2 - 12 | 2 - 12 | 2 + 3 | 2 - 12 | 2 - 32 | 2 - 12 | 2 - 26 |
| Rated Cross Section | --- | 1 mm ² / 18 AWG | --- | 1 mm ² / 18 AWG | 2,5 mm ² / 14 AWG | 1,5 mm ² / 16 AWG | 1,5 mm ² / 16 AWG | 1,5 mm ² / 16 AWG | --- | --- | 2,5 mm ² / 14 AWG | --- | 1 mm ² / 18 AWG | --- | 2,5 mm ² / 14 AWG |
| Rated Insulation Voltage | 130 V acc. to EN 60998-1 | 130 V acc. to EN 60998-1 | 130 V acc. to EN 60998-1 | 130 V acc. to EN 60998-1 | 250 V acc. to EN 60998-1 | 250 V acc. to EN 60998-1 | 130 V acc. to EN 60998-1 | 250 V acc. to EN 60998-1 | 130 V acc. to EN 60998-1 | 320 V (III / 2) | 250 V acc. to EN 60998-1 | 250 V acc. to EN 60998-1 | 450 V acc. to EN 60998-1 | 750 V acc. to EN 60998-1 | 750 V acc. to EN 60998-1 |
| Rated Current | 8 A | 13,5 A | 6 A | 6 A | 12 A | 16 A | 17,5 A | 17,5 A | 10 A | 24 A | 12 A | 12 A | 13,5 A | 12 A | 24 A |
| Approvals | | | | | | | | | | | | | | | |
| Description | Pin strip with two-tier version, plug-in direction parallel to PCB, with false insertion prevention | PCB connector for SMD with screw connection, floating terminal bodies | Pin strip for SMD with plug-in area ø 1,1 mm | Plug connector with screw connection, large conductor space | Plug connector with screw connection | PCB connector for SMD with screw connection, with solder flanges | PCB connector for SMD with screw connection | PCB connector for THR with screw connection | Pin strip for SMD with plug-in area ø 1,1 mm | PCB connector with screw connection 45°-angle to PCB, interlocking | Pin strip with plug-in direction vertical to PCB | PCB connector with screw connection, 2 solder pins per pole | Pin strip with plug-in direction parallel to PCB | PCB connector with screw connection, 2 solder pins per pole | |

Haven't found the right product?
We can help with special tailored solution for your application.
Contact us for more information.

