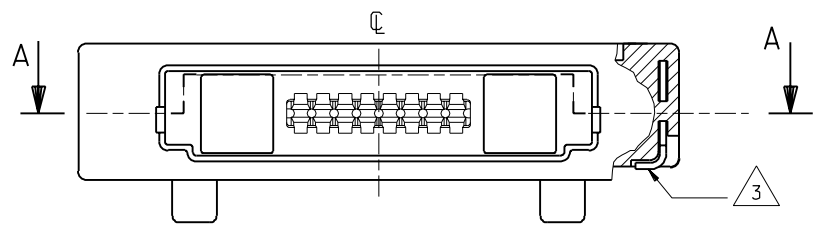
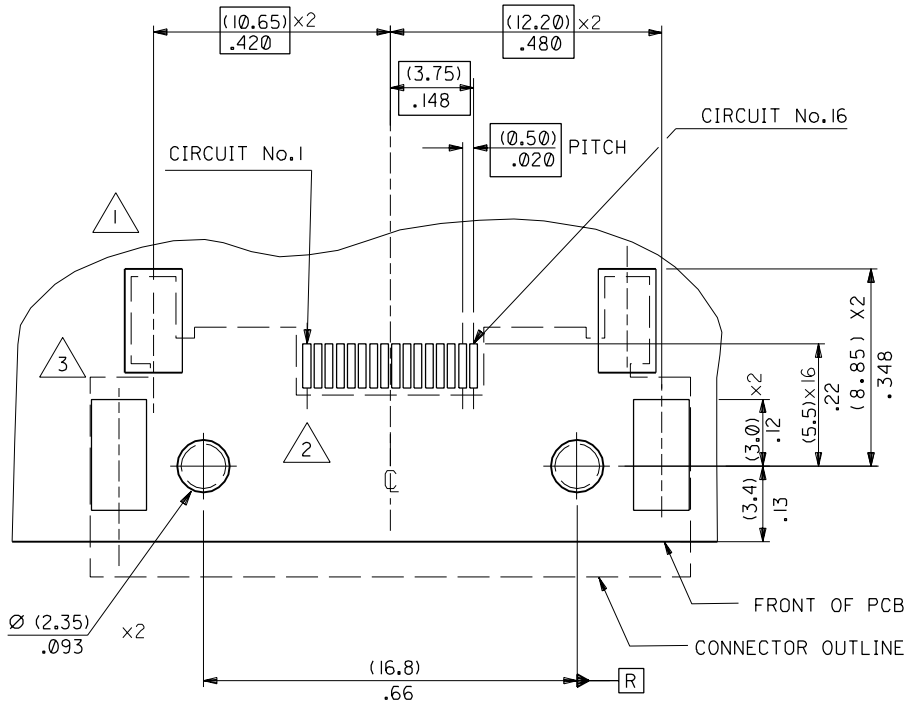
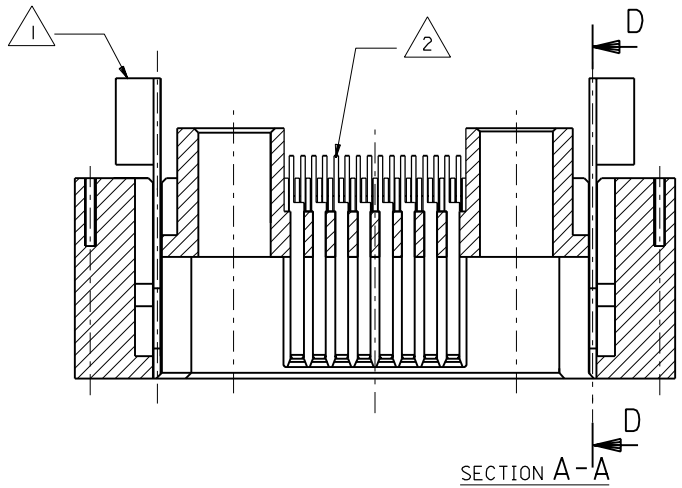


PART NO. SDA-90811-0112
 DWG. NO. 90811-0112



FOR MISSING DIMENSIONS SEE DRAWING SDA-90811-0109

COMPONENT	PCB PAD DIMENSION	QTY
LOCKING LATCHES 1	(2.60)/.102 x (4.65)/.183	⊕ (0.10) / .004 R (x2)
SIGNAL CONTACTS 2	(0.35 ± 0.05)/.014 ± 0.002 x (2.0)/.08	⊕ (0.10) / .004 R (x16)
SMT RETENTION PADS 3	(2.50)/.098 x (5.0)/.197	⊕ (0.10) / .004 R (x2)

FOR PREVIOUS DRAWING ISSUES SEE MRI.

ORIGINAL RELEASE ECN E50483 95.04.27 HDU	DIMENSIONS SHOWN (METRIC) INCH UNLESS OTHERWISE SPECIFIED TOLERANCES: ANGULAR ± 1/2°	DRWG BY HDU
REVISIONS	INCH (METRIC)	CHK'D BY
	3 PLACE ± .002	
	2 PLACE ± .004 ± 0.05	
	1 PLACE ± 0.10	
	DRAFT WHERE APPLICABLE MUST REMAIN WITHIN DIMENSIONS	APP'D BY
	DESIGN DIMENSION (PRIMARY) <input checked="" type="checkbox"/> (MM) <input type="checkbox"/> IN.	SCALE
	EQUIVALENT DIMENSION (SECONDARY) <input type="checkbox"/> (MM) <input checked="" type="checkbox"/> IN.	5:1

REVISE ONLY ON CAD SYSTEM		SHL. REV.
CAD/CM FILENAME S908112 DGN	THIS DRAWING CONTAINS INFORMATION THAT IS PROPRIETARY TO MOLEX INC. & SHOULD NOT BE USED WITHOUT WRITTEN PERMISSION	
TITLE I/O CONNECTOR FOR MOBILE PHONE		
MOLLEX MOLEX EUROPE		SHEET NO. DATE 10F 1 95/04/27
PART NO. 90811-0112	DWG NO. SDA-90811-0112	SIZE B