





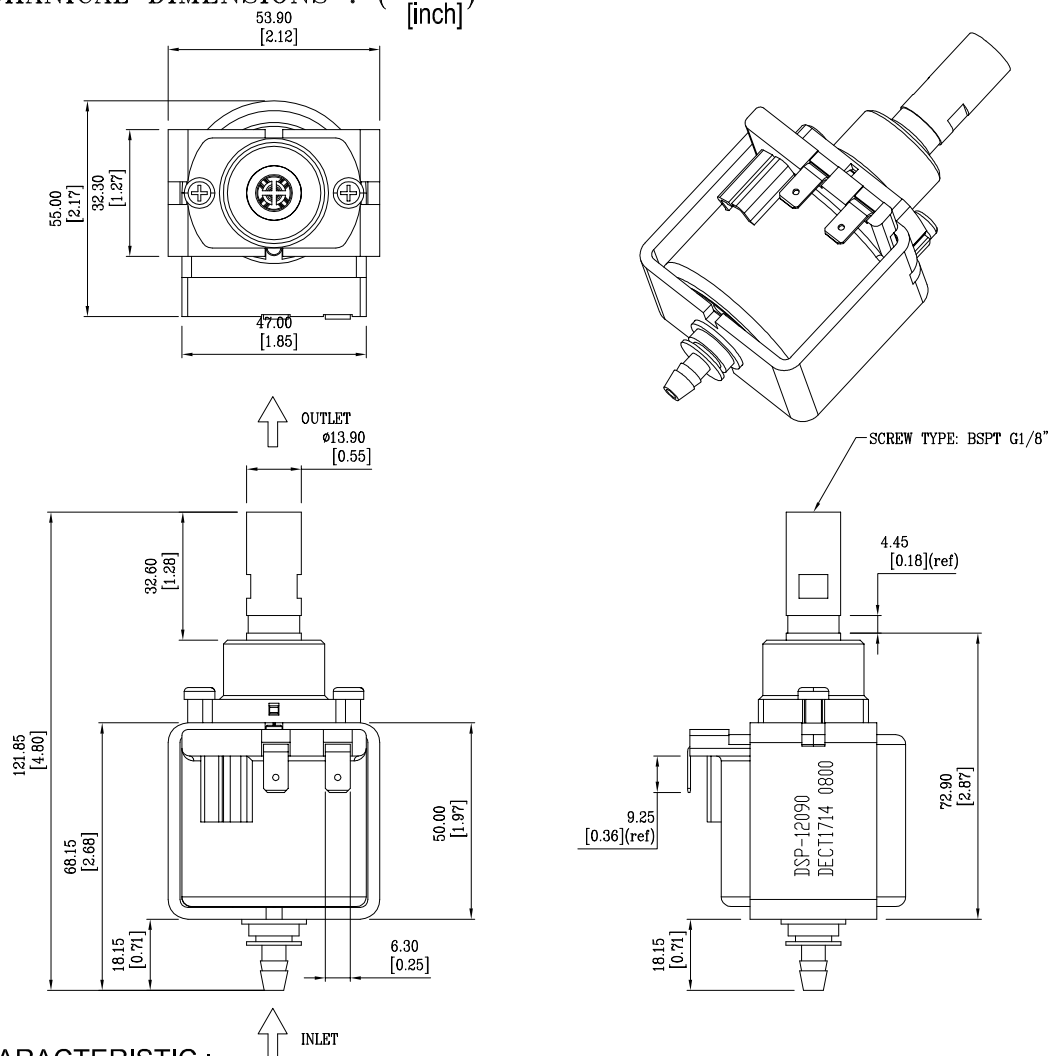
RoHS Compliant

## SPECIFICATION FOR APPROVAL

TO : \_\_\_\_\_

PAGE : 2/4

|                            |            |                             |                           |                  |
|----------------------------|------------|-----------------------------|---------------------------|------------------|
| CUSTOMER PART NO           | REV.<br>00 | DELTA PART NO.<br>DSP-12090 | ISSUE DATE<br>Feb.13,2017 | TEMP(°C)<br>25   |
| PART NAME<br>Solenoid Pump |            | DELTA REV.<br>01            | USED ON                   | HUM (%)<br>58 RH |

1. MECHANICAL DIMENSIONS : (  $\frac{\text{mm}}{\text{[inch]}}$  )

## 2. CHARACTERISTIC :

- 2-1. OPERATING VOLTAGE: 110Vac / 60Hz
- 2-2. POWER CONSUMPTION: 48W
- 2-3. OUTLET : BSPT G1/8"
- 2-4. FLOW RATE MAX : 900 c.c./min
- 2-5. FLOW RATE TOLERANCE :  $\pm 15\%$
- 2-6. PRESSURE MAX : 175 psi (12 bar)
- 2-7. WATER TEMPERATURE : 20 °C
- 2-8. WORKING CYCLE : 30 sec ON / 15 sec OFF
- 2-9. INTEGRATED DIODE
- 2-10. TEMPERATURE CLASS : F (155°C)
- 2-11. MAX. ON TIME : 11 min



RoHS Compliant

## SPECIFICATION FOR APPROVAL

TO : \_

PAGE : 3/4

|                            |            |                             |                           |                  |
|----------------------------|------------|-----------------------------|---------------------------|------------------|
| CUSTOMER PART NO           | REV.<br>00 | DELTA PART NO.<br>DSP-12090 | ISSUE DATE<br>Feb.13,2017 | TEMP(°C)<br>25   |
| PART NAME<br>Solenoid Pump |            | DELTA REV.<br>01            | USED ON                   | HUM (%)<br>58 RH |

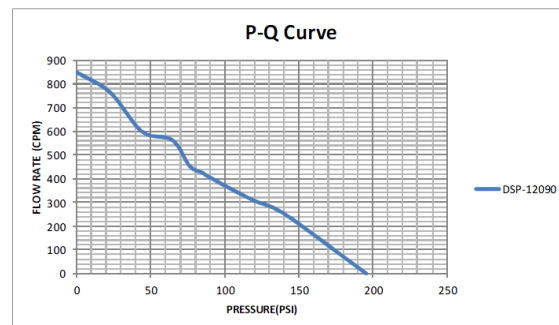
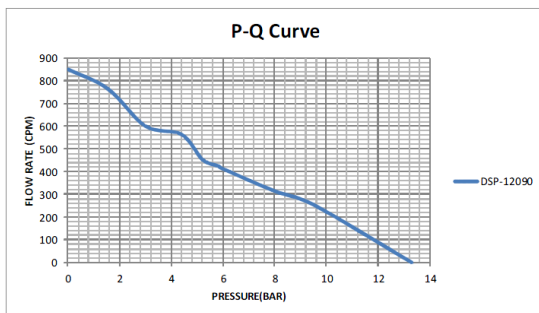
## 2. PRODUCT S/N :

DSP-12090  
DECT1714 0800

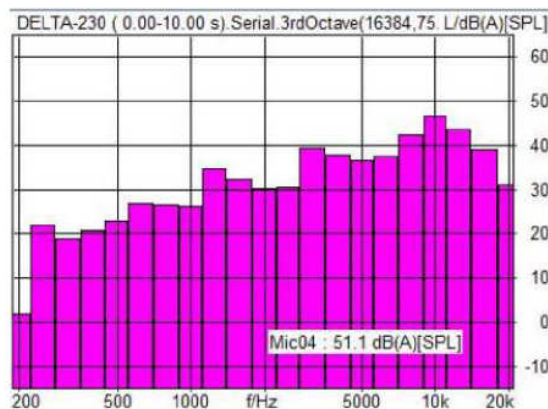
## NOTES:

"DSP-12090" IS DELTA P/N  
 "DECT" IS DELTA Chachoengsao plant  
 "1714": 17 IS YEAR ; 14 IS WEEK  
 "0800" : 08 IS SHIP DATE ; 00 IS PRODUCTION LINE OF NO.

## 3. P-Q CURVE :



## 4. NOISE TEST : 51.1 dBA ( at p=0 Bar/ 100cm)





RoHS Compliant

## SPECIFICATION FOR APPROVAL

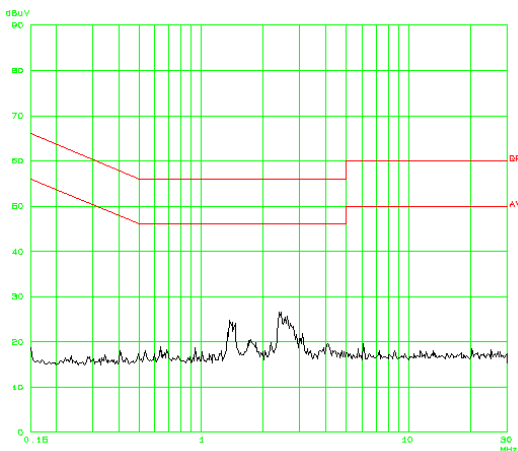
TO : \_

PAGE : 4/4

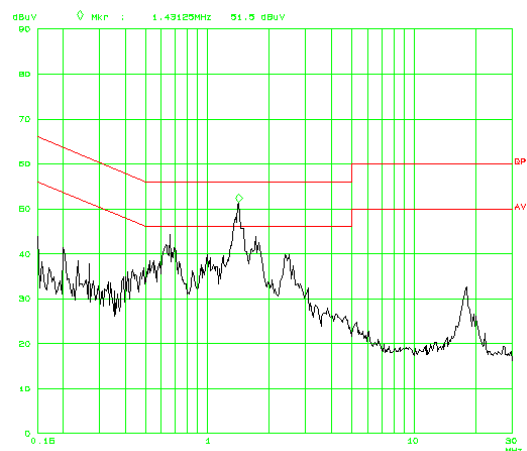
|                            |            |                             |                           |                  |
|----------------------------|------------|-----------------------------|---------------------------|------------------|
| CUSTOMER PART NO           | REV.<br>00 | DELTA PART NO.<br>DSP-12090 | ISSUE DATE<br>Feb.13,2017 | TEMP(°C)<br>25   |
| PART NAME<br>Solenoid Pump |            | DELTA REV.<br>01            | USED ON                   | HUM (%)<br>58 RH |

## 5. EMC TEST :

## 3-1. BACKGROUND

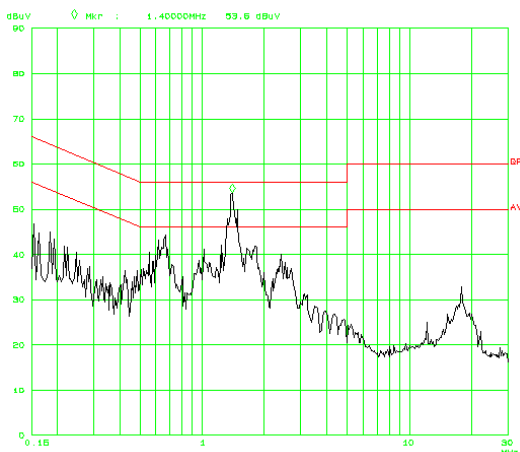


## 3-2. STANDBY



1.43125 MHz QP 49.7dB AV 43dB

## 3-3. OPERATION



1.4 MHz QP 49dB AV 42.5dB