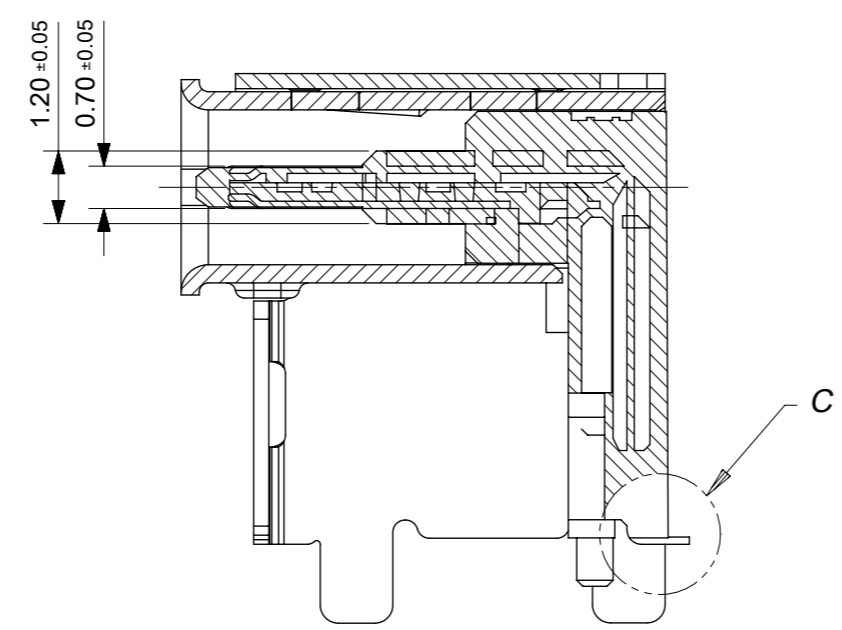
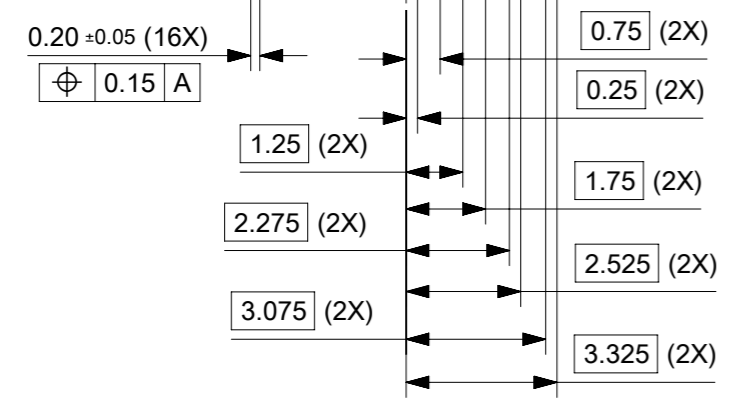
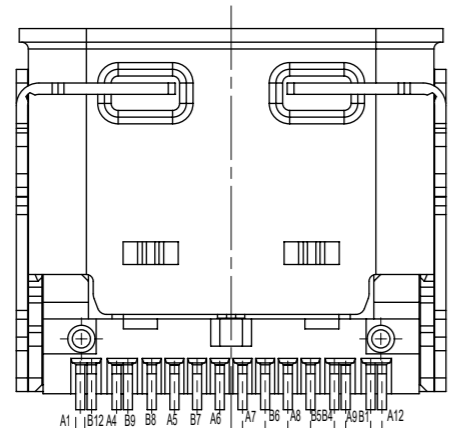
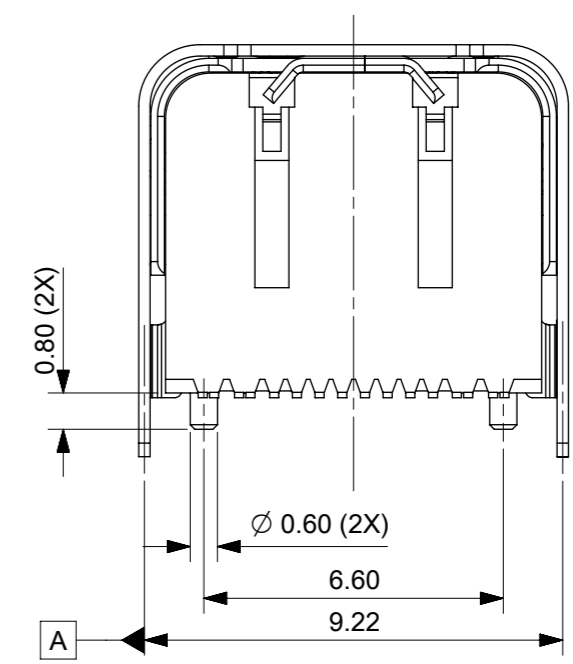
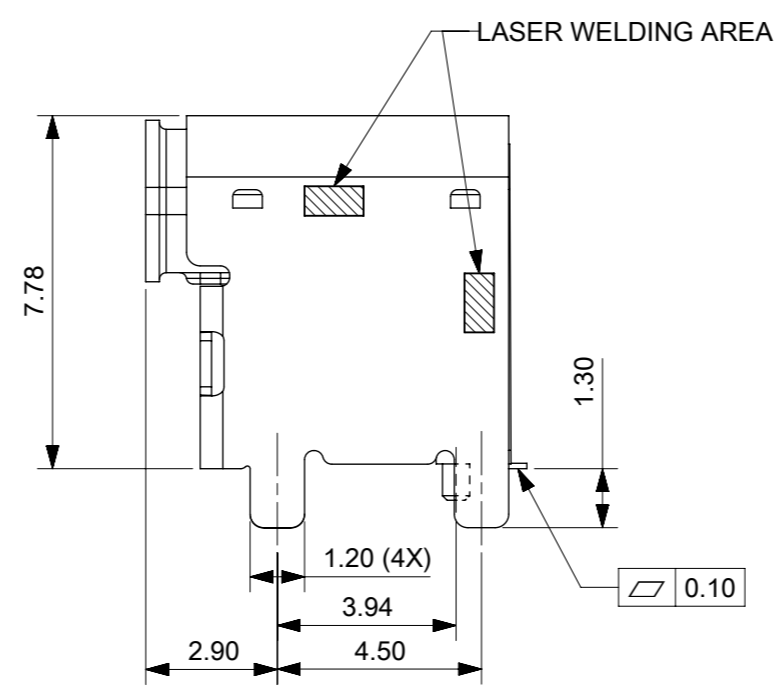
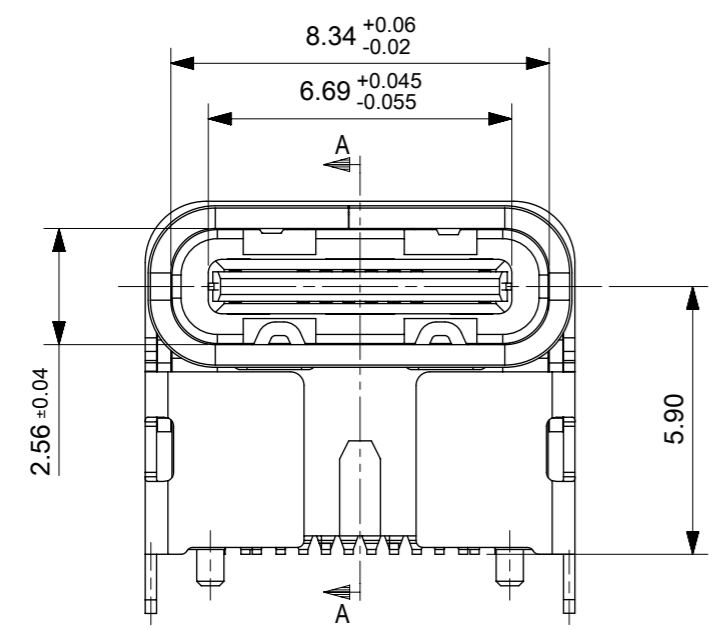


DIAGRAM FORM "C"



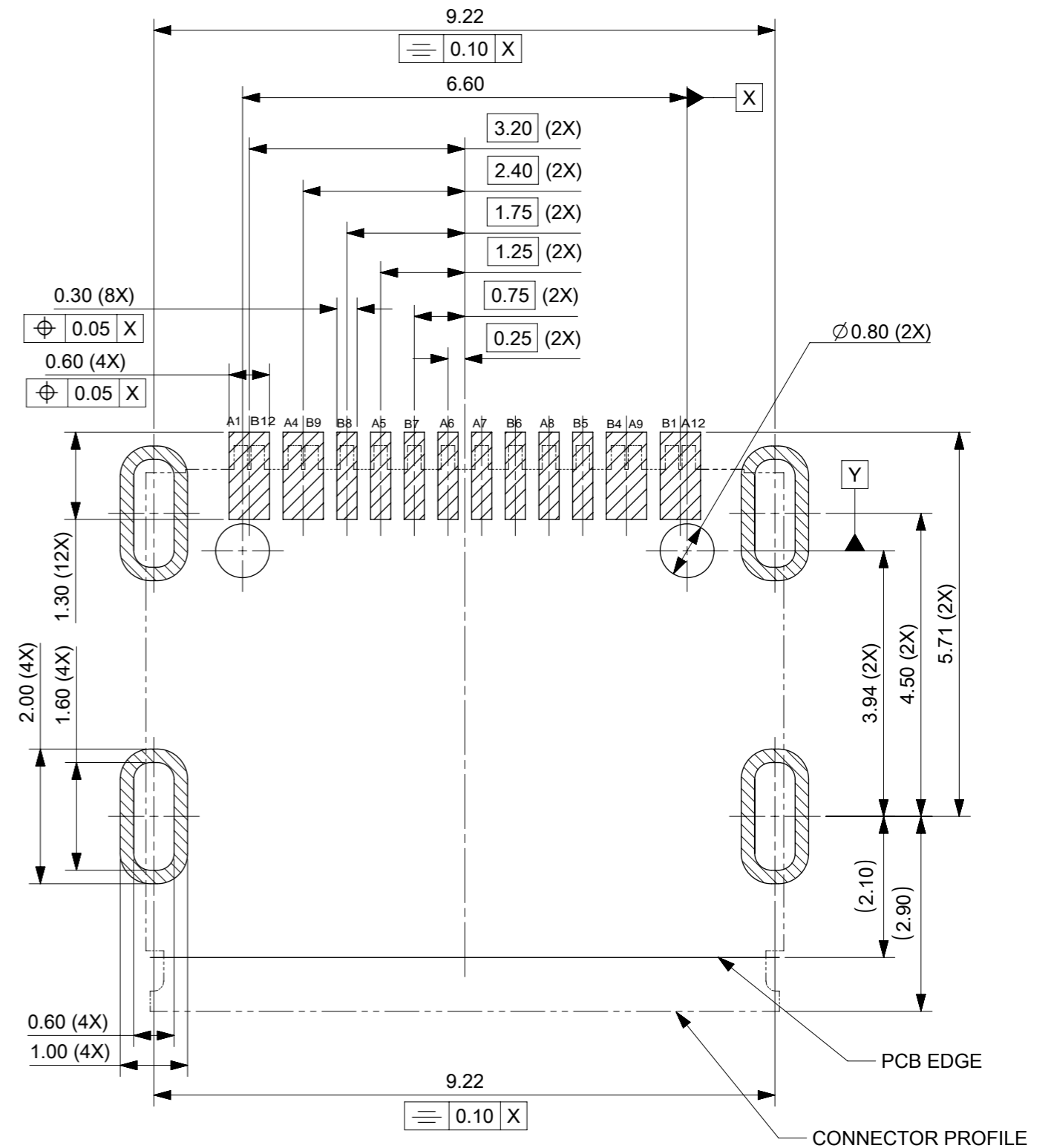
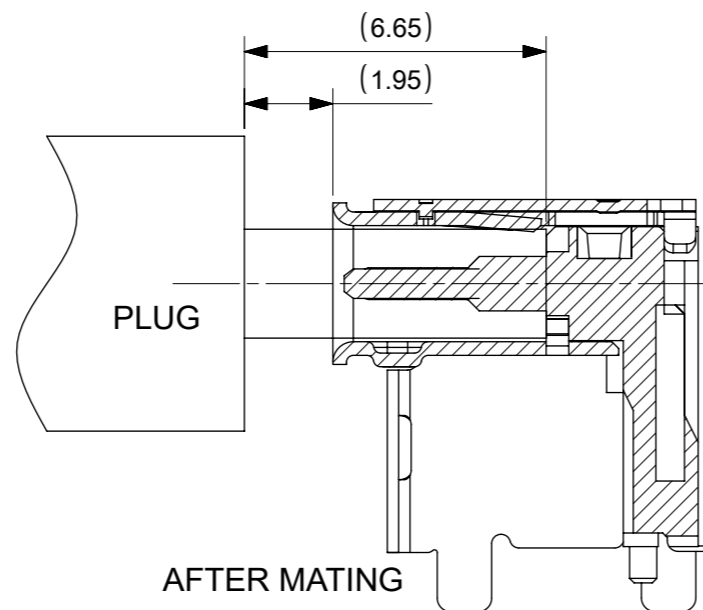
SECTION A-A

THIS DRAWING CONTAINS INFORMATION THAT IS PROPRIETARY TO MOLEX ELECTRONIC TECHNOLOGIES, LLC AND SHOULD NOT BE USED WITHOUT WRITTEN PERMISSION		CURRENT REV DESC:		<b>molex</b>	
DIMENSION UNITS	SCALE				
mm	1:1			TYPE C 16 PIN TOP MOUNT SMT CH 5.9	
GENERAL TOLERANCES (UNLESS SPECIFIED)				PRODUCT CUSTOMER DRAWING	
ANGULAR TOL	± 3.0°			DOCUMENT NUMBER	
4 PLACES	±	EC NO: 657457	2021/03/19	2171800001	
3 PLACES	± 0.1	DRWN: RZHANG	2021/04/06	DOC TYPE	DOC PART
2 PLACES	± 0.2	CHK'D: AYIN	2021/02/05	PSD	000
1 PLACE	± 0.3	APPR: AYIN		REVISION	
0 PLACES	±	INITIAL REVISION:		A1	
DRAFT WHERE APPLICABLE MUST REMAIN WITHIN DIMENSIONS		THIRD ANGLE PROJECTION	DRAWING	SERIES	MATERIAL NUMBER
			A3-SIZE	217180	CUSTOMER
					SHEET NUMBER
					1 OF 2

- NOTES:
- MATERIAL SPECIFICATION:
    - HOUSING: HIGH TEMPERATURE RESISTANT PLASTIC, UL94 V-0.
    - CONTACTS: COPPER ALLOY
    - MIDDLE CLIP: STAINLESS STEEL
    - SHELL: STAINLESS STEEL
  - PLATING:
    - TERMINAL: OVERALL PLATING Ni BASE 50u' MIN.  
FUNCTIONAL AREA Au PLATING G/F  
SOLDER AREA Au PLATING G/F
    - SHELL: 50u' NICKEL PLATING ON SOLDERING AREA.
    - COVER: 50u' NICKEL PLATING ON SOLDERING AREA.
    - MIDDLE CLIP : CLEANING
  - PRODUCT SPEC: 2169900001 PSPS
  - PACKAGE SPEC: 2171800001 PDDPK1
  - PRODUCT COMPLIANT TO ROHS DIRECTIVE 2011/95/EU
  - PLEASE CONTACT YOUR SALES REPRESENTATIVE IF INTENDED FOR AUTOMOTIVE
  - DATE CODE: YY WW D  
YEAR WEEK DAY

USB TYPE-C PIN ASSIGNMENTS

PIN NUMBER	SIGNAL NAME	PIN NUMBER	SIGNAL NAME
A1	GND	B12	GND
A4	VBUS	B9	VBUS
A5	CC1	B8	SBU2
A6	Dp1	B7	Dn2
A7	Dn1	B6	Dp2
A8	SBU1	B5	CC2
A9	VBUS	B4	VBUS
A12	GND	B1	GND



RECOMMENDED PCB LAYOUT(TOP VIEW)  
THICKNESS 1.00 MM;DEFAULT TOLERANCE: ±0.05

THIS DRAWING CONTAINS INFORMATION THAT IS PROPRIETARY TO MOLEX ELECTRONIC TECHNOLOGIES, LLC AND SHOULD NOT BE USED WITHOUT WRITTEN PERMISSION		CURRENT REV DESC:		<b>molex</b>	
DIMENSION UNITS	SCALE				
mm	1:1			TYPE C 16 PIN TOP MOUNT SMT CH 5.9	
GENERAL TOLERANCES (UNLESS SPECIFIED)				PRODUCT CUSTOMER DRAWING	
ANGULAR TOL	± 3.0°			DOCUMENT NUMBER	
4 PLACES	±	EC NO: 657457	2021/03/19	2171800001	
3 PLACES	± 0.1	DRWN: RZHANG	2021/04/06	DOC TYPE	DOC PART
2 PLACES	± 0.2	CHK'D: AYIN	2021/04/06	PSD	000
1 PLACE	± 0.3	APPR: AYIN		REVISION	A1
0 PLACES	±	INITIAL REVISION:		SHEET NUMBER	
DRAFT WHERE APPLICABLE MUST REMAIN WITHIN DIMENSIONS		DRWN: RZHANG	2021/01/21	2 OF 2	
THIRD ANGLE PROJECTION		APPR: AYIN	2021/02/05		
DRAWING		SERIES	MATERIAL NUMBER	CUSTOMER	
A3-SIZE		217180	2171800001		