

Disconnect terminal, Screw connection, Mounting type: Mounting rail TS 35/7.5 and TS 32, Rated cross-section: 4 mm², Width: 8 mm, Colour: Blue

Business data

Packaging unit	50
Quantity unit	PC
Weight per piece (not including packaging)	21.6 g
Weight per piece (including packaging)	23.5 g
Unit of weight	G
Customs number	85369010
Country of origin	DE
Prio-Article	1383.2
Product description	Disconnect terminal

1383.5

STKD 1/K BU

Technical data

Dimensions

Length	67 mm
Width	8 mm
Height TS 35/7.5	55.5 mm
Height TS 32	60 mm

Ratings

Rated voltage	500 V
Rated current	6.3 A
Rated cross-section	4 mm ²
Rated impulse voltage	6 kV
Overvoltage category	III
Contamination degree	3
Maximum power dissipation for nominal condition	0.4 W

Technical data

Connection data

Connection principle	Screw connection
Connection position	Lateral
Connections	2 + 2
Number of terminals per level	2
Number of levels	2
Wire cross-section single-core (rigid) / stranded, min.	0.2 mm ²
Wire cross-section single core (rigid)/stranded, max.	4 mm ²
Wire cross-section stranded, min.	0.2 mm ²
Wire cross-section stranded, max.	4 mm ²
Wire cross-section stranded with wire-end ferrules, min.	0.2 mm ²
Wire cross-section stranded with wire-end ferrules, max.	2.5 mm ²
Wire cross-section AWG, min.	22
Wire cross-section AWG, max.	12
Stripping length	9 mm
Screw head	Slotted
Screw threading	M 3
Tightening torque, min.	0.5 Nm
Tightening torque, max.	1 Nm

Materials

Insulation housing	Polyamide 6.6
Flammability class UL 94	V-2
Working temperature, min.	-40 °C
Working temperature, max.	105 °C

Further technical data

Mounting type	Mounting rail TS 35/7.5 and TS 32
Gauge plug acc. to EN 60 947-1	A4
End plate required	✓
Version of lengthwise partition	Swivelling

1383.5

STKD 1/K BU

Technical data

Print

Colour	Blue
--------	------

Environmental Product Compliance

REACH Conform	No
---------------	----

REACH Reference date	2021-07-08
----------------------	------------

REACH Candidate Substance Note	No
--------------------------------	----

REACH CAS 1 Substance	LEAD
-----------------------	------

REACH CAS 1 Percent minimal	0.1 %
-----------------------------	-------

REACH CAS 1 Percent maximum	4 %
-----------------------------	-----

REACH CAS 1 Number	7439-92-1
--------------------	-----------

RoHS Conform	yes
--------------	-----

RoHS Exception rule	6c
---------------------	----

1383.5

STKD 1/K BU

Approvals

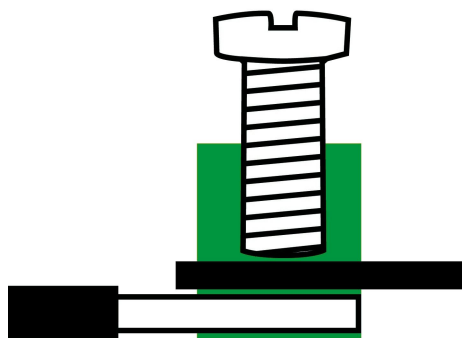
CSA approval

CSA approval	C22.2 No 158
CSA approval granted	yes
CSA Usegroup C: rated voltage	500 V
CSA Usegroup C: rated current	6,3 A
CSA wire cross-section AWG, min.	22
CSA wire cross-section AWG, max.	12
CSA stripping length	9 mm

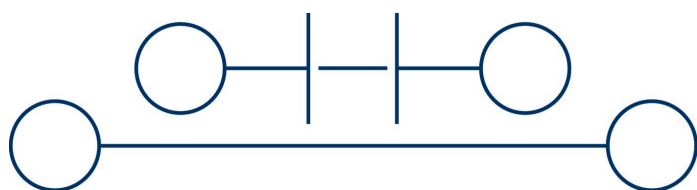
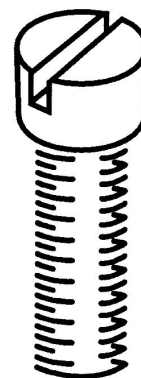
CSAus approval

CSAus approval	UL 1059
CSAus approval granted	yes
CSAus Usegroup C: rated voltage	500 V
CSAus Usegroup C: rated current	6,3 A
CSAus wire cross-section AWG, min.	22
CSAus wire cross-section AWG, max.	12
CSAus stripping length	9 mm

Media



M3

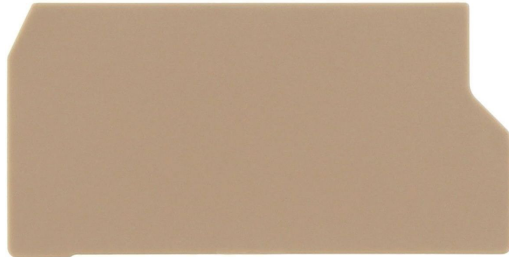


1383.5

STKD 1/K BU

Accessories

End plate



End plate, Width: 1.5 mm, Colour: Beige

General order data

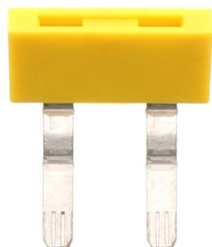
Product number:	Article name	GTIN (EAN)	Packaging unit
2186.2	AP/SI-2 BG	4044211050061	500 ST

1383.5

STKD 1/K BU

Accessories

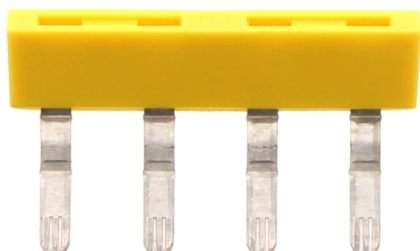
Insulated external cross-connector



External insulated cross-connector, No. of poles: 2, Mounting type: Plug in, Width: 16.1 mm, Rated current: 27 A; Colour: Yellow

General order data

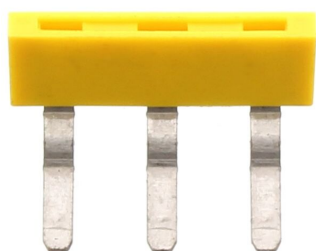
Product number:	Article name	GTIN (EAN)	Packaging unit
2067.0	AQI 2/8/11 YE	4044211048730	500 ST



External insulated cross-connector, No. of poles: 4, Mounting type: Plug in, Width: 32.3 mm, Rated current: 27 A; Colour: Yellow

General order data

Product number:	Article name	GTIN (EAN)	Packaging unit
2069.0	AQI 4/8/11 YE	4044211048754	500 ST



External insulated cross-connector, No. of poles: 3, Mounting type: Plug in, Width: 24.2 mm, Rated current: 27 A; Colour: Yellow

General order data

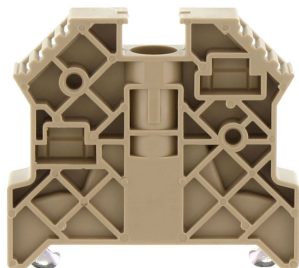
Product number:	Article name	Creation date 15.11.2021 12:58:30 Subject to technical changes	GTIN (EAN)	Packaging unit
2068.0	AQI 3/8/11 YE		4044211048747	500 ST

1383.5

STKD 1/K BU

Accessories

End stop



End stop, Mounting type: Mounting rail TS 35/7.5, Width: 9.5 mm, Colour: Beige

General order data

Product number:	Article name	GTIN (EAN)	Packaging unit
2828.0	ES 35/K/ST BG	4044211055547	500 ST

Solid link



Solid link, Colour: natural

General order data

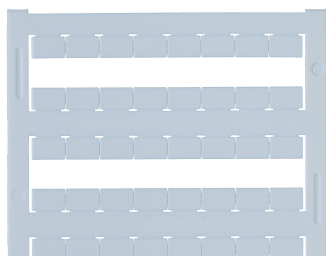
Product number:	Article name	GTIN (EAN)	Packaging unit
2470.0	KH 5	4044211052607	500 ST

1383.5

STKD 1/K BU

Accessories

Quick marking



Terminal marker / Pocket Maxicard, Length: 5 mm, Width: 8 mm, Colour: White

General order data

Product number:	Article name	GTIN (EAN)	Packaging unit
9323.7	PMC SB 8/40 WH	4044211129231	500 ST

Screwdriver



Screwdriver with bare blade, Colour: Black-grey

General order data

Product number:	Article name	GTIN (EAN)	Packaging unit
1086.0	SDB 0,6x3,5	4044211014797	500 ST
