

6

5

4

3

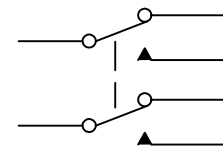
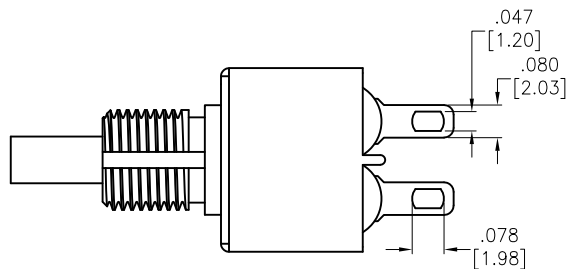
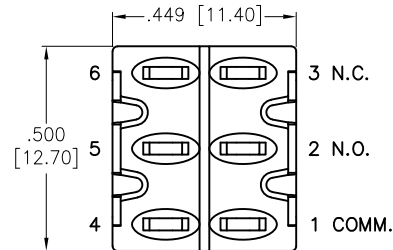
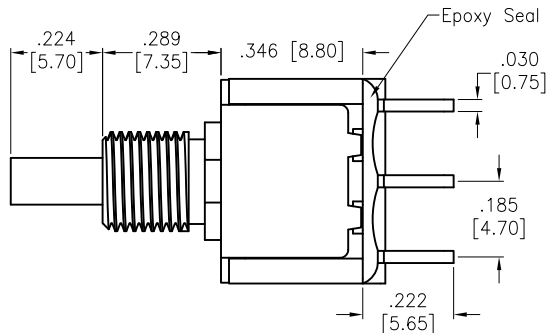
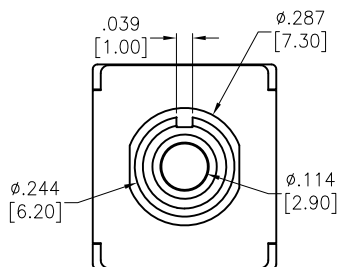
2

1

APPROVED: \_\_\_\_\_

DATE: \_\_\_\_\_ TITLE: \_\_\_\_\_

Rev	AWO #	Description	Date	Appr
-		RELEASED	2/9/21	



CIRCUIT DIAGRAM (DPDT) ON-MOMENTARY

SPECIFICATIONS:

Material:

Movable Contact: Copper Alloy, Silver Plated

Terminal: Copper Alloy, Silver Plated

Electrical:

Voltage rating: 120VAC or 38VDC

Current rating: 1 Amps

Contact resistance: 10 mΩ max

Insulation resistance: 1,000 Mohms min

Dielectric withstanding voltage: 1,500V RMS @Sea level

Temperature Rating:

Operating temperature: -30°C to +85°C

Environmental:

Lead free, RoHS compliant



UNLESS OTHERWISE SPECIFIED ALL DIMENSIONS ARE INCHES [MM] TOLERANCES: EXCEPT AS NOTED INCHES HOLES .X ± .10 Ø.X ± .10 .XX ± .020 Ø.XX ± .015 .XXX ± .015 Ø.XXX ± .010		<b>ADAM TECH</b> 909 Rahway Avenue, Union, NJ 07083 Phone: 908-687-5000 Fax: 908-687-5710	
APPROVALS DRAWN LH 2/9/21 CHECKED AC 2/9/21 APPROVED		DATE DATE DATE	
TITLE SNAP-ACTING PUSH BUTTON SWITCH, DPDT, ON-MOMENTARY, SILVER PLATED, SOLDER TYPE		SIZE X	PART NO. SW-PB8-BB00A1QE-1
REF: S00198T		SCALE: NTS	REV. - SHEET 1 OF 1

6

5

4

3

2

1