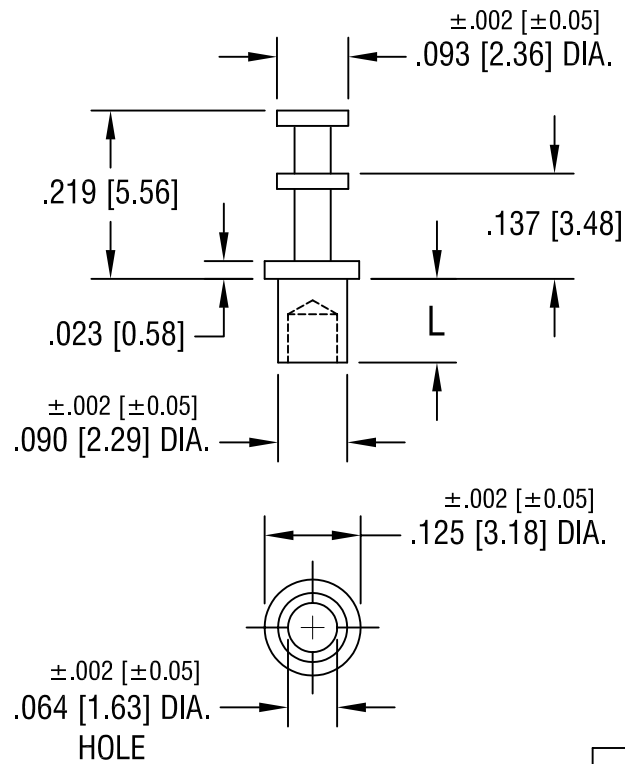


THIS DOCUMENT IS THE PROPERTY OF  
KEYSTONE ELECTRONICS CORP. AND  
SHALL NOT BE REPRODUCED, DISTRIBUTED  
OR USED AS A BASIS FOR MANUFACTURE  
WITHOUT PRIOR WRITTEN PERMISSION  
FROM KEYSTONE ELECTRONICS CORP.



PART NO.	'L' DIM.
1502-1	.078 [1.98]
1502-2	.109 [2.77]
1502-3	.141 [3.58]
1502-4	.172 [4.37]

<b>KEYSTONE ELECTRONICS CORP.</b>			
ASTORIA, N.Y. 11105-2017			
PART NAME			
SOLDER TERMINAL, DOUBLE TURRET			
MATERIAL			
BRASS			
FINISH		DRN BY	DATE
TIN PLATE		BOONE	5.28.02
		APP'D	SCALE
		LN	4X
TOLERANCES	INCH [MM]	CODE	DWG NO.
DECIMAL	±.005 [±0.15]	C	1502-
ANGULAR	± 1°		
UNLESS OTHERWISE SPECIFIED			

2.14.08	CHANGE AS PER ECN 08-084	A
DATE	DESCRIPTION	REV.