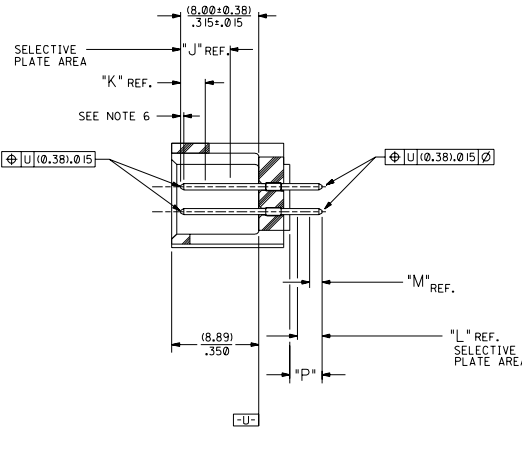


RECOMMENDED P.C. BOARD HOLE LAYOUT



SECTION J-J

NOTES:

- 1- 20 CIRCUIT SIZE SHOWN FOR ILLUSTRATION PURPOSES.
- 2- PIN PUSHOUT FORCE: (17.79 N) ¼ LBS.
- 3- PINS MUST MEET SOLDERABILITY SPEC. MIL-STD-202 METHOD 208B.
- 4- WINDOW NOT AVAILABLE ON 6 AND 8 CIRCUIT SIZE.
- 5- FOR CHARTED DIMENSIONS AND ASSEMBLY NOS NOT SHOWN ON THIS SHEET - SEE SHEET 2.
- 6- ROW TO ROW PIN HEIGHT VARIATION MUST NOT EXCEED (0.13) / .005 IN.
- 7- PRODUCT CONFORMS TO PS-8723.

MATERIAL:

SHROUDED WAFER: GLASS FILLED POLYESTER, 94V-0; COLOR: BLACK.  
 PINS: PHOSPHOR BRONZE,  
 SEE SHEET 2 FOR FINISHES.

ASSEMBLY STYLE "A" AND "B"

KRT.	8723			8723		
	DIM. "A"	DIM. "B"	DIM. "C"	DIM. "D"	DIM. "E"	
06	(1.68) .066	(8.43) .332	(5.08) .200	(1.68) .066		
08	(1.68) .066	(10.97) .432	(7.62) .300	(1.68) .066		
10	(1.68) .066	(13.51) .532	(10.16) .400	(4.22) .166		
12	(1.68) .066	(16.05) .632	(12.70) .500	(4.22) .166		
14	(1.68) .066	(18.59) .732	(15.24) .600	(4.22) .166		
16	(1.68) .066	(21.13) .832	(17.78) .700	(4.22) .166		
18	(1.68) .066	(23.67) .932	(20.32) .800	(4.22) .166		
20	(1.68) .066	(26.21) 1.032	(22.86) .900	(4.22) .166		
22	(1.68) .066	(28.75) 1.132	(25.40) 1.000	(4.22) .166		
24	(1.68) .066	(31.29) 1.232	(27.94) 1.100	(4.22) .166		
26	(1.68) .066	(33.83) 1.332	(30.48) 1.200	(4.22) .166		
28	(1.68) .066	(36.37) 1.432	(33.02) 1.300	(4.22) .166		
30	(1.68) .066	(38.91) 1.532	(35.56) 1.400	(4.22) .166		
32	(1.68) .066	(41.45) 1.632	(38.10) 1.500	(4.22) .166		
34	(1.68) .066	(43.99) 1.732	(40.64) 1.600	(4.22) .166		
36	(1.68) .066	(46.53) 1.832	(43.18) 1.700	(4.22) .166		
38	(1.68) .066	(49.07) 1.932	(45.72) 1.800	(4.22) .166		
40	(1.68) .066	(51.61) 2.032	(48.26) 1.900	(4.22) .166		
42	(1.68) .066	(54.15) 2.132	(50.80) 2.000	(4.22) .166		
44	(1.68) .066	(56.69) 2.232	(53.34) 2.100	(4.22) .166		
46	(1.68) .066	(59.23) 2.332	(55.88) 2.200	(4.22) .166		
48	(1.68) .066	(61.77) 2.432	(58.42) 2.300	(4.22) .166		
50	(1.68) .066	(64.31) 2.532	(60.96) 2.400	(4.22) .166		
52	(1.68) .066	(66.85) 2.632	(63.50) 2.500	(4.22) .166		
54	(1.68) .066	(69.39) 2.732	(66.04) 2.600	(4.22) .166		
56	(1.68) .066	(71.93) 2.832	(68.58) 2.700	(4.22) .166		
58	(1.68) .066	(74.47) 2.932	(71.12) 2.800	(4.22) .166		
60	(1.68) .066	(77.01) 3.032	(73.66) 2.900	(4.22) .166		
62	(1.68) .066	(79.55) 3.132	(76.20) 3.000	(4.22) .166		
64	(1.68) .066	(82.09) 3.232	(78.74) 3.100	(4.22) .166		
66	(1.68) .066	(84.63) 3.332	(81.28) 3.200	(4.22) .166		
68	(1.68) .066	(87.17) 3.432	(83.82) 3.300	(4.22) .166		
70	(1.68) .066	(89.71) 3.532	(86.36) 3.400	(4.22) .166		
72	(1.68) .066	(92.25) 3.632	(88.90) 3.500	(4.22) .166		

- |     |                                                         |
|-----|---------------------------------------------------------|
| U   | ADD -3803 OPT DCP2804-2268 DMORGAN 04/05/20             |
| T   | LEAD FREE USP2004-1770 R/WHITE 04/04/26                 |
| S   | ADD -3802 OPTION ECM *R2P2804-D02 DMORGAN 04/01/2       |
| R2  | TAB DIF DIM 6 CIR ECM *R2D1 0999-0145 DMORGAN 56/09/01  |
| R1  | ADD WDG LATCH NOTE ECM *R2D1 0998-0399 DMORGAN 56/06/23 |
| R   | ADDED SHEET 7 PER ECR NO US8225 03-23-96                |
| O   | REMOVE FDP NOS. PER ECR NO US8225 03-23-96              |
| P   | CHGD WINDOW NOTES PER ECR NO US36316 05-04-93           |
| O   | CHANGED MATERIAL PER ECR NO US3646 03-22-93             |
| R2  | REVISED & REDRAWN PER ECR NO US2073 05-29-92            |
| LTR | REVISIONS                                               |

DIMENSIONS SHOWN METRIC INCH  $\nabla = 0$   $\blacktriangledown = 0$  REVISE ONLY ON CAD SYSTEM  
 SALES ASSEMBLY  
 WAFER - STRAIGHT MT. FULLY SHROUDED  
 .1000 GRID - FOR USE W/ .0025 SQ. PINS  
 WITH .066 END WALLS  
 MOLEX INCORPORATED (SHEET NO. 1) OF 7 92/07/17  
 SEE CHART SDA-8723-\*\*\*\*\*  
 FILE NO. 58723A01  
 DATE 4-1-91  
 DATE MADE MAY BE APPLICABLE MUST READ WITH DIMENSIONS  
 UNLESS OTHERWISE SPECIFIED  
 DIM. METRIC  
 1 PLK ± .005  
 2 PLK ± .01 ± 0.13  
 3 PLK ± .02 ± 0.25  
 DIM. INCH  
 1 PLK ± .005  
 2 PLK ± .01 ± 0.13  
 3 PLK ± .02 ± 0.25  
 SCALE 4:1

