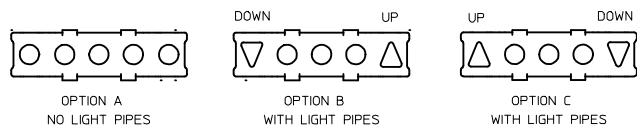


PART NUMBER	DESCRIPTION	LIGHT PIPE OPTIONS	GASKET
76870-0003	NO LIGHT PIPES	A = NONE	STANDARD
76870-0004	WITH LIGHT PIPES	B = DOWN / UP	STANDARD
76870-0005	WITH LIGHT PIPES	C = UP / DOWN	STANDARD
76870-0013	NO LIGHT PIPES	A = NONE	94V-0
76870-0014	WITH LIGHT PIPES	B = DOWN / UP	94V-0
76870-0015	WITH LIGHT PIPES	C = UP / DOWN	94V-0



NOTES:

1. MATERIAL:

CAGE: NICKEL SILVER, 0.25mm THICK  
 EMI STRAPS: PHOS-BRONZE  
 AIR-VENT/LIGHT PIPE HOUSINGS: DIECAST ALLOY  
 LIGHT PIPES: POLYCARBONATE (OPTIONAL)  
 CONNECTOR HOUSING: HIGH TEMPERATURE THERMOPLASTIC  
 TERMINALS: COPPER ALLOY  
 EMI GASKETS -CONDUCTIVE POLYMER HB/94V-0 SEE OPTIONS

2. FINISH:

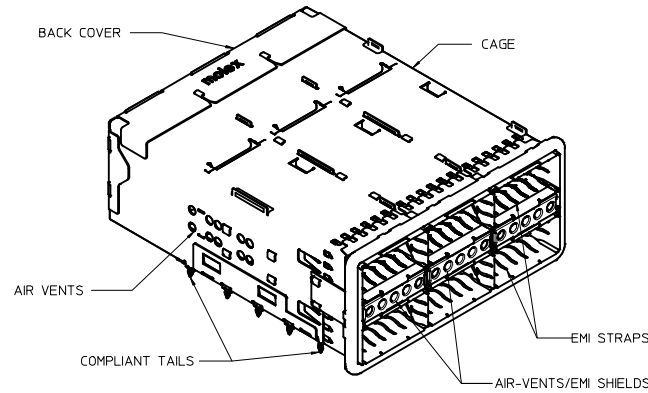
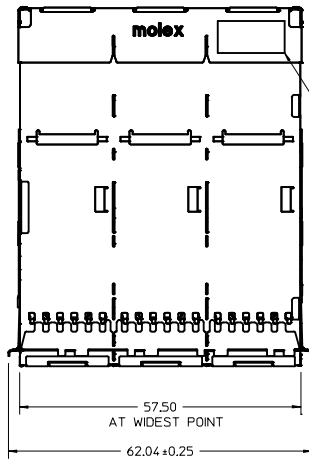
CAGE: UNPLATED  
 EMI STRAPS: 2.5µm NICKEL OVERALL  
 AIR-VENT/LIGHT PIPE HOUSINGS: NICKEL OVER COPPER  
 TERMINALS: CONTACT AREA:  
 0.76-1.52 µm MIN. GOLD OVER 2.5 µm MIN. NICKEL.  
 COMPLIANT TAIL:  
 0.7-1.5µm MIN. MATTE TIN OVER 1.3µm NICKEL.

3. PACKAGING: PRODUCT PACKAGED IN TRAYS AND CARTONS

4. ALL VISIBLE EXTERIOR SURFACES TO BE CLASS 'B' OR BETTER, EXCEPT FOR THE UNDERSIDE OF THE CAGE AND SHOULD CONFORM TO THE MOLEX COSMETIC STANDARD ES-171233-0001.

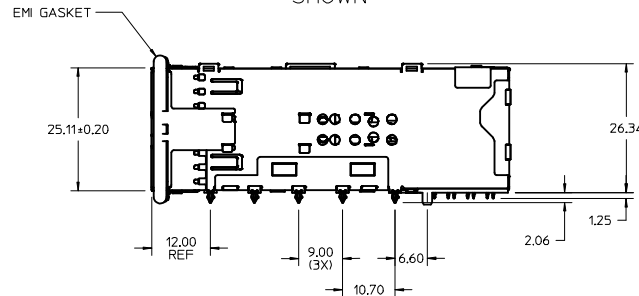
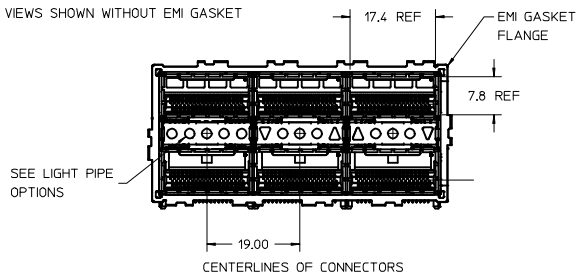
5. CONNECTOR MATES WITH PLUG CABLE SERIES 74757 AND 74758

6. DATE CODE LOCATION IS SHOWN.  
 DATE CODE FORMAT: DDDY  
 DDD= DAY OF THE YEAR  
 Y= YEAR

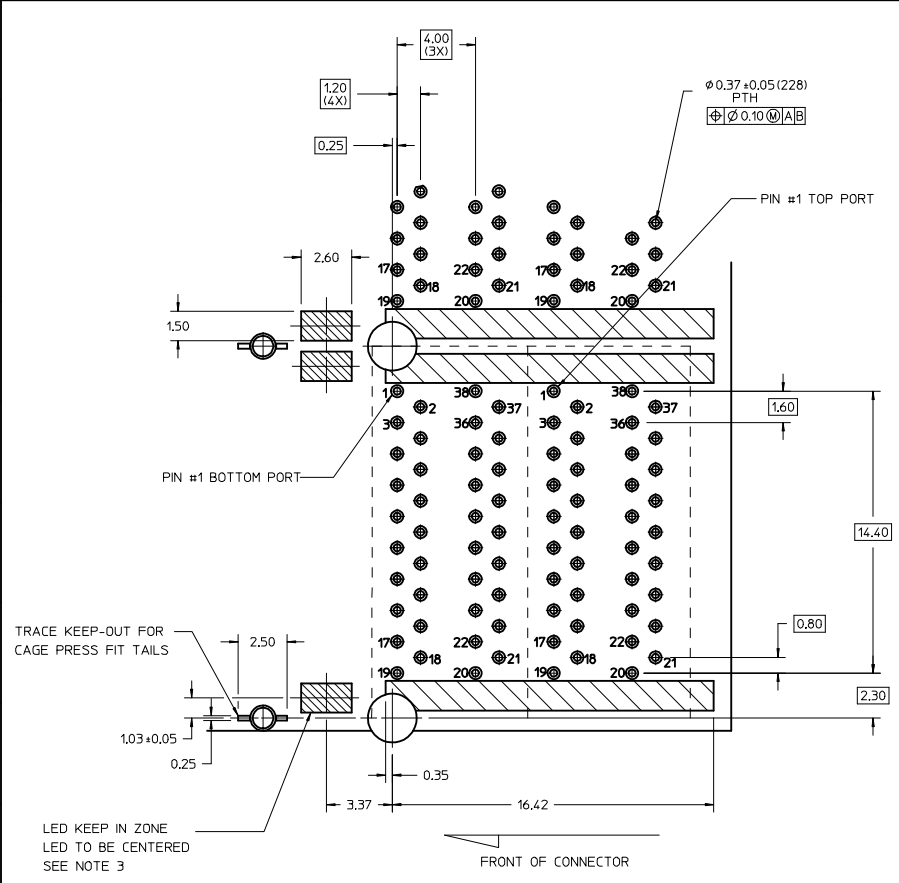


PART NUMBER  
76870-0001-0003  
SHOWN

VIEWS SHOWN WITHOUT EMI GASKET



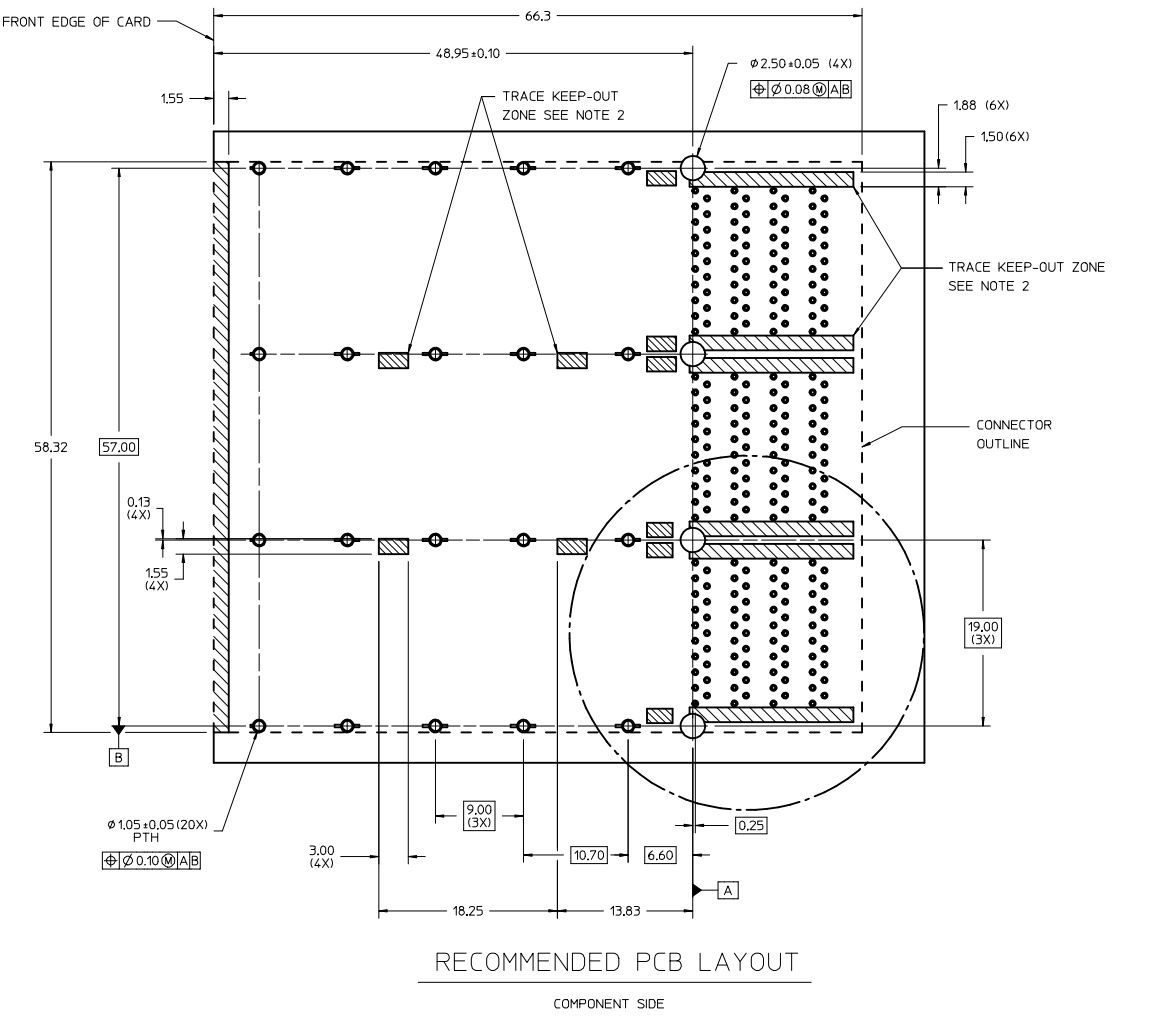
ADDED 94V-0 GASKET PMS IEC NO. UCF2014-5082 DRAWN BY: CHYD APPR: MBANKIS 2014/06/05	QUALITY SYMBOLS ▽=0 ▽=0		GENERAL TOLERANCES (UNLESS SPECIFIED) mm INCH		DIMENSION STYLE MM ONLY		SCALE 2:1		DESIGN UNITS METRIC		THIRD ANGLE PROJECTION	
	4 PLACES	±0.10	±0.004	±0.004	DRAWN BY	DATE	TITLE					
	3 PLACES	±0.13	±0.005	±0.005	CHECKED BY	DATE	ASSEMBLY, QSFP PLUS STACKED 2 X 3 WITH ELASTOMER GASKET					
	2 PLACES	±0.25	±0.007	±0.007	APPROVED BY	DATE	MOLEX INCORPORATED					
DRAFT WHERE APPLICABLE MUST REMAIN WITHIN DIMENSIONS			MATERIAL NO. SEE CHART		DOCUMENT NO. SD-76870-001		SHEET NO. 1 OF 3					
THIS DRAWING CONTAINS INFORMATION THAT IS PROPRIETARY TO MOLEX INCORPORATED AND SHOULD NOT BE USED WITHOUT WRITTEN PERMISSION												



DETAIL 1  
PCB PORT LAYOUT  
(COMPONENT SIDE)

NOTES:

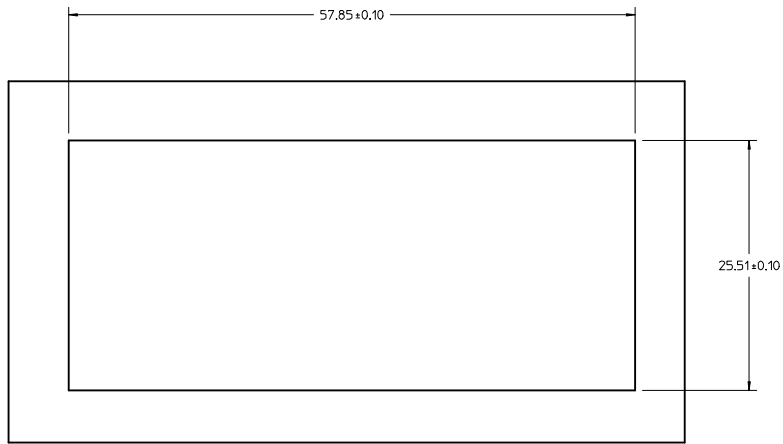
1. DASHED LINES INDICATE THE CONNECTOR OUTLINE, THIS AREA IS A COMPONENT KEEP-OUT ZONE.
2. CROSS HATCHED AREAS DENOTE CRITICAL POINTS WHERE CAGE OR CONNECTOR HOUSINGS CAN CONTACT THE BOARD, THESE AREAS ARE TRACE KEEP-OUT ZONES.
3. LED KEEP-IN ZONE DEFINES THE PHYSICAL SPACE ALLOWED FOR PLACEMENT OF SMD CHIP STYLE LED PACKAGES, KEEP-IN ZONE EXTENDS VERTICALLY TO 0,8mm ABOVE THE TOP SIDE OF BOARD.



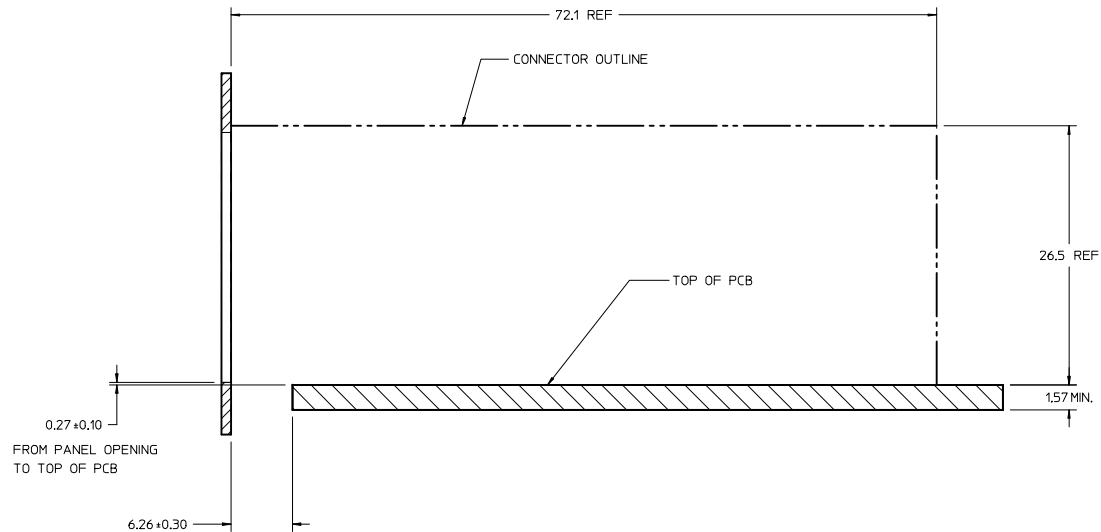
RECOMMENDED PCB LAYOUT  
COMPONENT SIDE

SEE SHEET 1 IEC NO: UCP2014-5082 DRAWN BY: CHYD APPROVED BY: MBANKAKIS DATE: 2014/06/05	QUALITY SYMBOLS	GENERAL TOLERANCES (UNLESS SPECIFIED)	DIMENSION STYLE	SCALE	DESIGN UNITS	THIRD ANGLE PROJECTION
	$\nabla=0$ $\nabla=0$ $\nabla=0$	mm INCH 4 PLACES ± --- ± --- 3 PLACES ± --- ± --- 2 PLACES ± 0.13 ± --- 1 PLACE ± 0.25 ± --- ANGULAR ± 1/2°	MM ONLY	2:1	METRIC	
	DRAFT WHERE APPLICABLE MUST REMAIN WITHIN DIMENSIONS	DRAWN BY: SBOG IEL CHECKED BY: KREGNIER APPROVED BY: MBANKAKIS DATE: 01/22/2009 DATE: 01/23/2009 DATE: 01/26/2009	MATERIAL NO: SEE SHEET 1	TITLE: ASSEMBLY, QSFP PLUS STACKED 2 X 3 WITH ELASTOMER GASKET	DOCUMENT NO: SD-76870-001	SHEET NO: 2 OF 3
			MOLEX INCORPORATED			

20 19 18 17 16 15 14 13 12 11 10 9 8 7 6 5 4 3 2 1



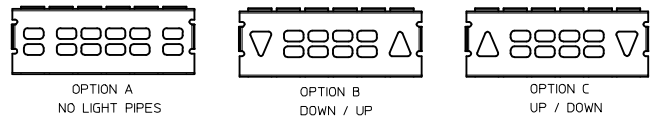
RECOMMENDED PANEL CUT-OUT



<b>SEE SHEET 1</b> IEC NO: UCP2014-5082 DRAWN BY: CHYKD APPR: MBANKIS 2014/06/05	QUALITY SYMBOLS	GENERAL TOLERANCES (UNLESS SPECIFIED)	DIMENSION STYLE	SCALE	DESIGN UNITS	THIRD ANGLE PROJECTION														
	$\nabla=0$ $\nabla=0$	<table border="1"> <thead> <tr> <th></th> <th>mm</th> <th>INCH</th> </tr> </thead> <tbody> <tr> <td>4 PLACES</td> <td>± 0.13</td> <td>± 0.005</td> </tr> <tr> <td>3 PLACES</td> <td>± 0.13</td> <td>± 0.005</td> </tr> <tr> <td>2 PLACES</td> <td>± 0.25</td> <td>± 0.010</td> </tr> <tr> <td>1 PLACE</td> <td>± 0.25</td> <td>± 0.010</td> </tr> </tbody> </table> ANGULAR ±1/2°		mm	INCH	4 PLACES	± 0.13	± 0.005	3 PLACES	± 0.13	± 0.005	2 PLACES	± 0.25	± 0.010	1 PLACE	± 0.25	± 0.010	<b>MM ONLY</b>	4:1	METRIC
	mm	INCH																		
4 PLACES	± 0.13	± 0.005																		
3 PLACES	± 0.13	± 0.005																		
2 PLACES	± 0.25	± 0.010																		
1 PLACE	± 0.25	± 0.010																		
	DESCRIPTION	DRAWN BY	DATE	TITLE																
		SBOGIEL	01/22/2009	ASSEMBLY, QSFP PLUS																
		KREGLIER	01/23/2009	STACKED 2 X 3																
		APPROVED BY	DATE	WITH ELASTOMER GASKET																
		MBANKIS	01/26/2009	<b>MOLEX INCORPORATED</b>																
		MATERIAL NO.	DOCUMENT NO.	SHEET NO.																
		<b>SEE SHEET 1</b>	SD-76870-001	3 OF 3																
		SIZE	THIS DRAWING CONTAINS INFORMATION THAT IS PROPRIETARY TO MOLEX INCORPORATED AND SHOULD NOT BE USED WITHOUT WRITTEN PERMISSION																	
		D																		

19 18 17 16 15 14 13 12 11 10 9 8 7 6 5 4 3 2 1

PART NUMBER	DESCRIPTION	LIGHT PIPE OPTIONS	PLATING
76870-2003	NO LIGHT PIPES	A = NONE	TIN
76870-2004	WITH LIGHT PIPES	B = DOWN / UP	TIN
76870-2005	WITH LIGHT PIPES	C = UP / DOWN	TIN



NOTES:

1. MATERIAL:

CAGE: NICKEL SILVER, 0.25mm THICK  
 EMI STRAPS: PHOS-BRONZE  
 AIR-VENT/LIGHT PIPE HOUSINGS: DIECAST ALLOY  
 LIGHT PIPES: POLYCARBONATE (OPTIONAL)  
 CONNECTOR HOUSING: HIGH TEMPERATURE THERMOPLASTIC  
 TERMINALS: COPPER ALLOY

2. FINISH:

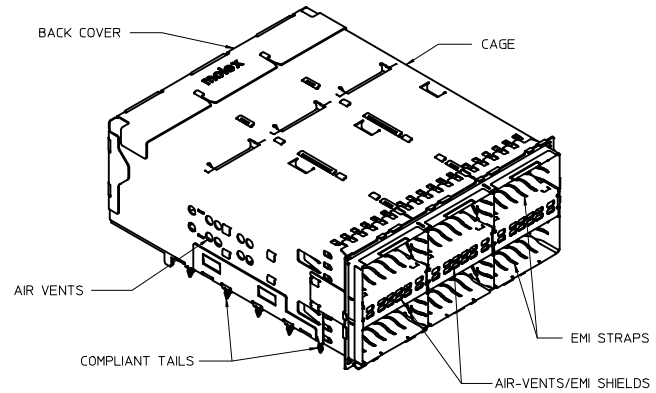
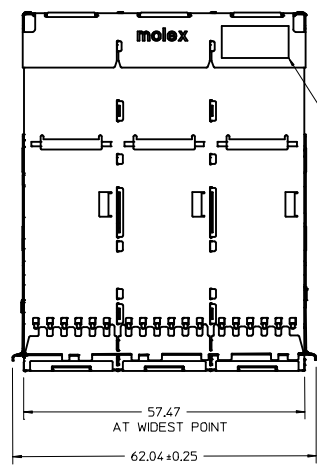
CAGE: UNPLATED  
 EMI STRAPS: 2.5µm NICKEL OVERALL  
 AIR-VENT/LIGHT PIPE HOUSINGS: NICKEL OVER COPPER  
 TERMINALS: CONTACT AREA:  
 0.76-1.52 µm MIN. GOLD OVER 2.5 µm MIN. NICKEL.  
 COMPLIANT TAIL:  
 TIN/LEAD: 0.7-1.5 µm TIN/LEAD (90/10) OVER 1.3 µm NICKEL.  
 TIN: 0.7-1.5µm MIN. MATTE TIN OVER 1.3µm NICKEL.

3. PACKAGING: PRODUCT PACKAGED IN TRAYS AND CARTONS

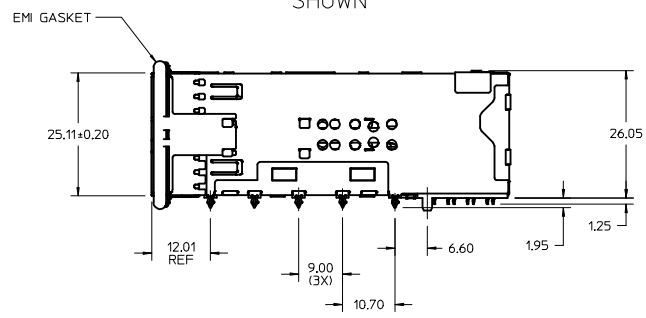
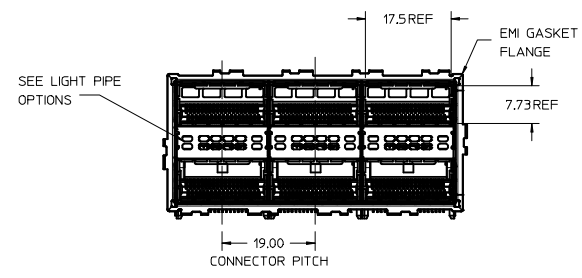
4. ALL VISIBLE EXTERIOR SURFACES TO BE CLASS 'B' OR BETTER, EXCEPT FOR THE UNDERSIDE OF THE CAGE AND SHOULD CONFORM TO THE MOLEX COSMETIC STANDARD PS-45499-002

5. CONNECTOR MATES WITH PLUG CABLE SERIES 74757 AND 74758

6. DATE CODE LOCATION IS SHOWN.  
 DATE CODE FORMAT: DDDY  
 DDD= DAY OF THE YEAR  
 Y= YEAR

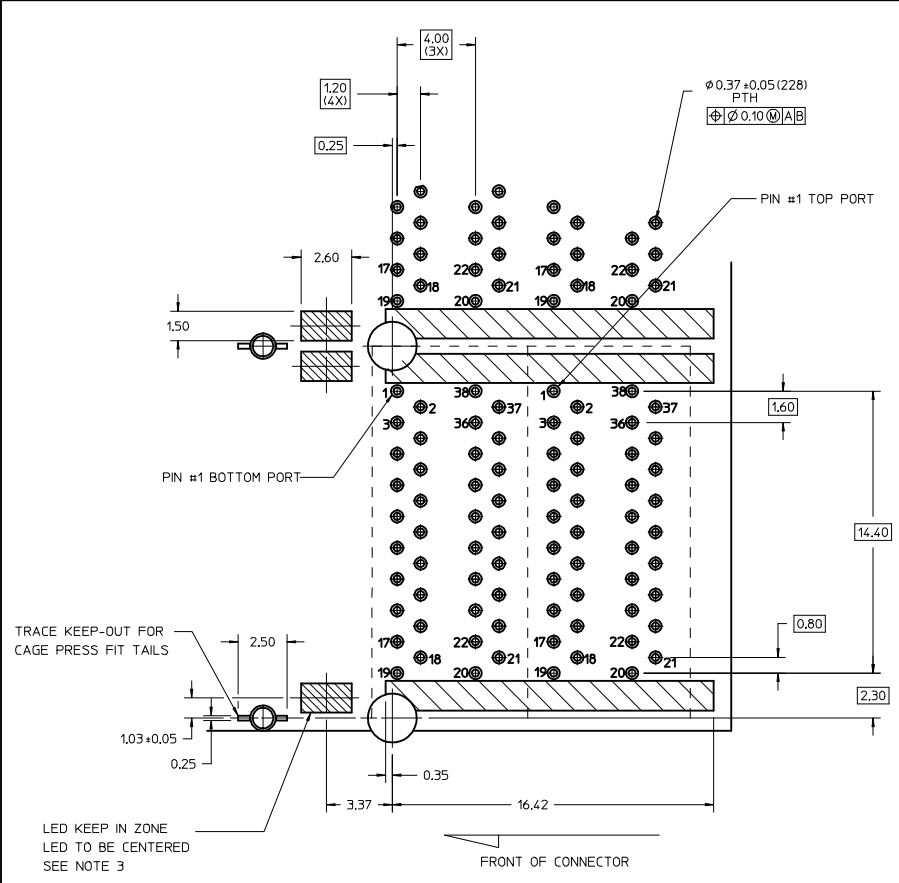


PART NUMBER  
 76870-0001/-0003  
 SHOWN



DEFINE LED KEEP-IN IEC NO. UCP2013-0233 DRAWN BY CHYD APPR: MBANKIS 2012/07/31	QUALITY SYMBOLS	GENERAL TOLERANCES (UNLESS SPECIFIED)	DIMENSION STYLE	SCALE	DESIGN UNITS	THIRD ANGLE PROJECTION															
	$\nabla=0$ $\nabla=0$	<table border="1"> <thead> <tr> <th></th> <th>mm</th> <th>INCH</th> </tr> </thead> <tbody> <tr> <td>4 PLACES</td> <td>±---</td> <td>±---</td> </tr> <tr> <td>3 PLACES</td> <td>±---</td> <td>±---</td> </tr> <tr> <td>2 PLACES</td> <td>±0.13</td> <td>±---</td> </tr> <tr> <td>1 PLACE</td> <td>±0.25</td> <td>±---</td> </tr> </tbody> </table>		mm	INCH	4 PLACES	±---	±---	3 PLACES	±---	±---	2 PLACES	±0.13	±---	1 PLACE	±0.25	±---	MM ONLY	2:1	METRIC	
		mm	INCH																		
	4 PLACES	±---	±---																		
3 PLACES	±---	±---																			
2 PLACES	±0.13	±---																			
1 PLACE	±0.25	±---																			
DRAWN BY HAVERY 2012/06/08 CHECKED BY DATE	APPROVED BY MBANKIS 2012/07/31 DATE	TITLE <b>ASSEMBLY, QSFP PLUS          STACKED 2 X 3          ENHANCED EMI PERFORMANCE</b>																			
MATERIAL NO. SEE CHART	DOCUMENT NO. SD-76870-2000	MOLEX INCORPORATED																			

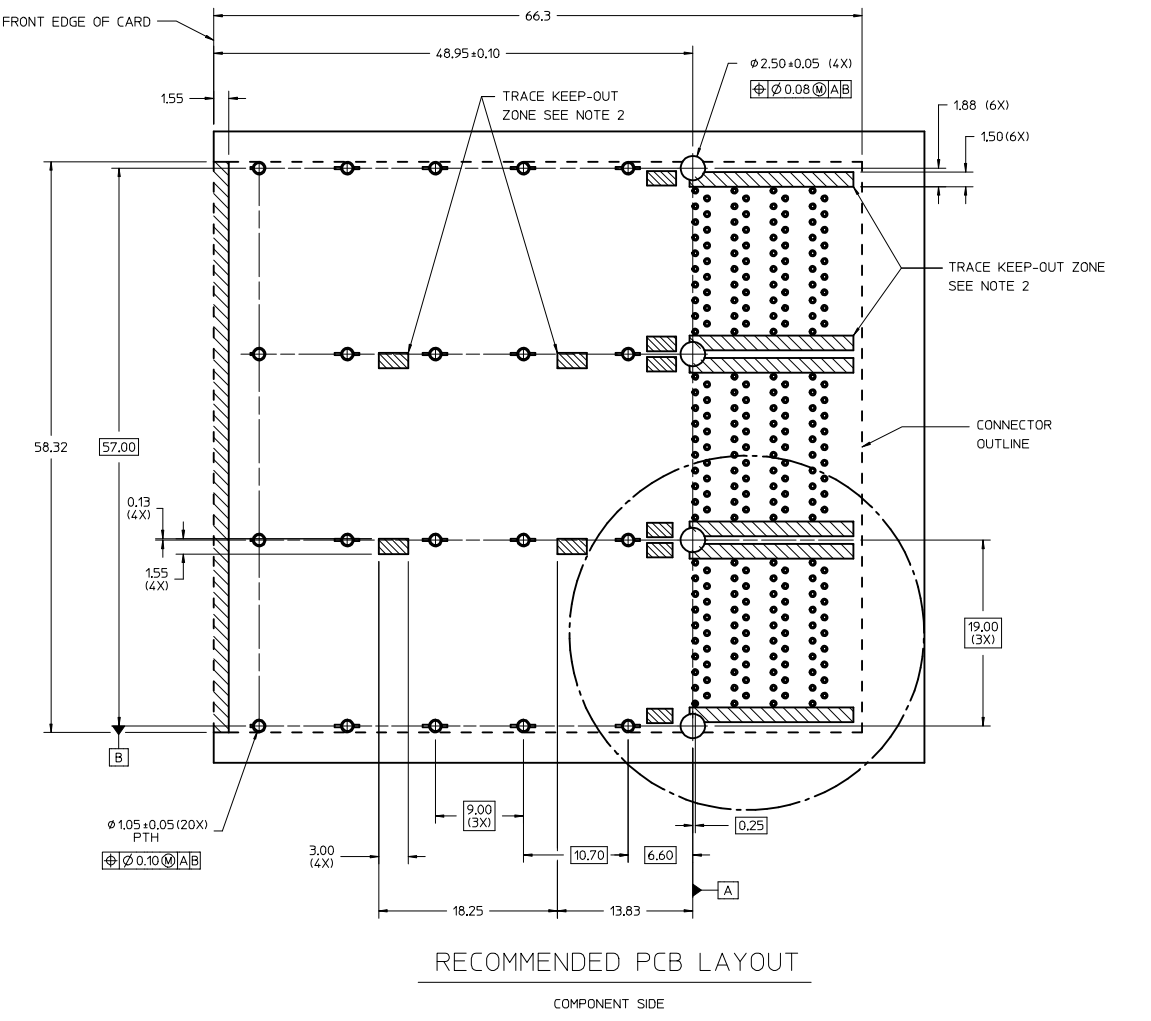
THIS DRAWING CONTAINS INFORMATION THAT IS PROPRIETARY TO MOLEX INCORPORATED AND SHOULD NOT BE USED WITHOUT WRITTEN PERMISSION



DETAIL 1  
PCB PORT LAYOUT  
(COMPONENT SIDE)

NOTES:

1. DASHED LINES INDICATE THE CONNECTOR OUTLINE, THIS AREA IS A COMPONENT KEEP-OUT ZONE.
2. CROSS HATCHED AREAS DENOTE CRITICAL POINTS WHERE CAGE OR CONNECTOR HOUSINGS CAN CONTACT THE BOARD, THESE AREAS ARE TRACE KEEP-OUT ZONES.
3. LED KEEP-IN ZONE DEFINES THE PHYSICAL SPACE ALLOWED FOR PLACEMENT OF SMD CHIP STYLE LED PACKAGES, KEEP-IN ZONE EXTENDS VERTICALLY TO 0,8mm ABOVE THE TOP SIDE OF BOARD.

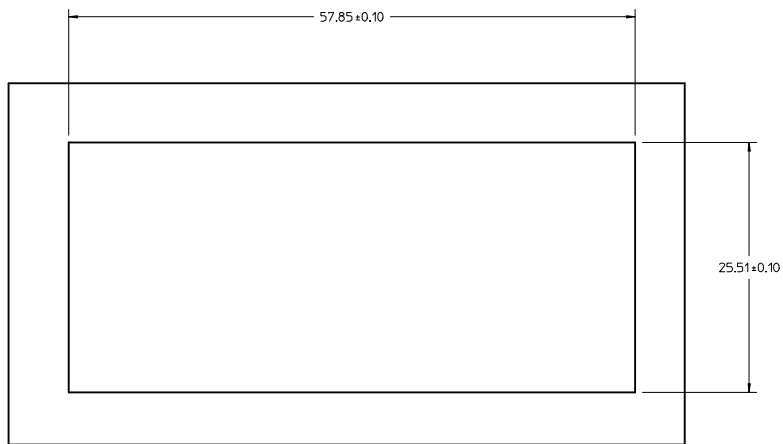


RECOMMENDED PCB LAYOUT

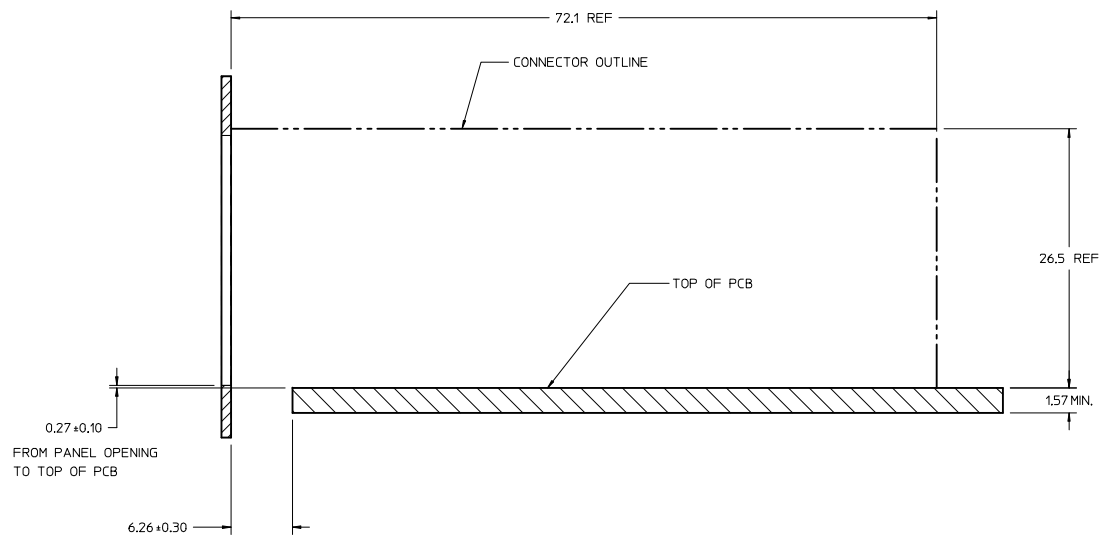
COMPONENT SIDE

<p><b>SEE SHEET 1</b> EC NO: UCP2013-0233 DRAWN BY: DRWNAHVERY CHKD: APPR:MBANKIS DATE: 2012/06/08</p>	<p>QUALITY SYMBOLS</p> <p>▽=0</p> <p>▽=0</p> <p>▽=0</p>	<p>GENERAL TOLERANCES (UNLESS SPECIFIED)</p> <table border="1"> <thead> <tr> <th></th> <th>mm</th> <th>INCH</th> </tr> </thead> <tbody> <tr> <td>4 PLACES</td> <td>±---</td> <td>±---</td> </tr> <tr> <td>3 PLACES</td> <td>±---</td> <td>±---</td> </tr> <tr> <td>2 PLACES</td> <td>±0.13</td> <td>±---</td> </tr> <tr> <td>1 PLACE</td> <td>±0.25</td> <td>±---</td> </tr> </tbody> </table> <p>ANGULAR ±1/2°</p>		mm	INCH	4 PLACES	±---	±---	3 PLACES	±---	±---	2 PLACES	±0.13	±---	1 PLACE	±0.25	±---	<p>DIMENSION STYLE</p> <p><b>MM ONLY</b></p> <p>SCALE <b>2:1</b></p> <p>DESIGN UNITS <b>METRIC</b></p> <p>THIRD ANGLE PROJECTION</p>	<p>TITLE</p> <p><b>ASSEMBLY, QSFP PLUS STACKED 2 X 3 ENHANCED EMI PERFORMANCE</b></p>
		mm	INCH																
	4 PLACES	±---	±---																
	3 PLACES	±---	±---																
2 PLACES	±0.13	±---																	
1 PLACE	±0.25	±---																	
<p>APPROVED BY: MBANKIS DATE: 2012/07/31</p>	<p>DRAFT WHERE APPLICABLE MUST REMAIN WITHIN DIMENSIONS</p>	<p>SEE SHEET 1</p>	<p>MOLEX INCORPORATED</p>	<p>SHEET NO. 2 OF 3</p>															
<p>DATE: 2012/07/31</p>	<p>SIZE <b>D</b></p>	<p>THIS DRAWING CONTAINS INFORMATION THAT IS PROPRIETARY TO MOLEX INCORPORATED AND SHOULD NOT BE USED WITHOUT WRITTEN PERMISSION</p>	<p>DOCUMENT NO. <b>SD-76870-2000</b></p>	<p>2 OF 3</p>															
<p>REV</p>	<p>DESCRIPTION</p>	<p>DATE</p>	<p>DATE</p>	<p>DATE</p>															

20 19 18 17 16 15 14 13 12 11 10 9 8 7 6 5 4 3 2 1



RECOMMENDED PANEL CUT-OUT



<b>SEE SHEET 1</b> IEC NO: UCP2013-0233 DRAWN BY: HAVERY CHYK: MBANKI S APPR: MBANKI S DATE: 2012/07/31	QUALITY SYMBOLS	GENERAL TOLERANCES (UNLESS SPECIFIED)	DIMENSION STYLE	SCALE	DESIGN UNITS	THIRD ANGLE PROJECTION																		
	$\nabla=0$ $\nabla=0$	<table border="1"> <thead> <tr> <th></th> <th>mm</th> <th>INCH</th> </tr> </thead> <tbody> <tr> <td>4 PLACES</td> <td>± ---</td> <td>± ---</td> </tr> <tr> <td>3 PLACES</td> <td>± ---</td> <td>± ---</td> </tr> <tr> <td>2 PLACES</td> <td>± 0.13</td> <td>± ---</td> </tr> <tr> <td>1 PLACE</td> <td>± 0.25</td> <td>± ---</td> </tr> <tr> <td colspan="3">ANGULAR ±1/2°</td> </tr> </tbody> </table>		mm	INCH	4 PLACES	± ---	± ---	3 PLACES	± ---	± ---	2 PLACES	± 0.13	± ---	1 PLACE	± 0.25	± ---	ANGULAR ±1/2°			MM ONLY 4:1 METRIC	DRAWN BY: HAVERY DATE: 2012/06/08 CHECKED BY: HAVERY DATE: 2012/06/08	TITLE: ASSEMBLY, QSFP PLUS STACKED 2 X 3 ENHANCED EMI PERFORMANCE MOLEX INCORPORATED	SHEET NO. 3 OF 3
		mm	INCH																					
	4 PLACES	± ---	± ---																					
3 PLACES	± ---	± ---																						
2 PLACES	± 0.13	± ---																						
1 PLACE	± 0.25	± ---																						
ANGULAR ±1/2°																								
DRAFT WHERE APPLICABLE MUST REMAIN WITHIN DIMENSIONS	APPROVED BY: MBANKI S DATE: 2012/07/31	MATERIAL NO. SEE SHEET 1 DOCUMENT NO. SD-76870-2000	THIS DRAWING CONTAINS INFORMATION THAT IS PROPRIETARY TO MOLEX INCORPORATED AND SHOULD NOT BE USED WITHOUT WRITTEN PERMISSION																					

19 18 17 16 15 14 13 12 11 10 9 8 7 6 5 4 3 2 1