

SPECIFICATIONS:

ELECTRICAL:

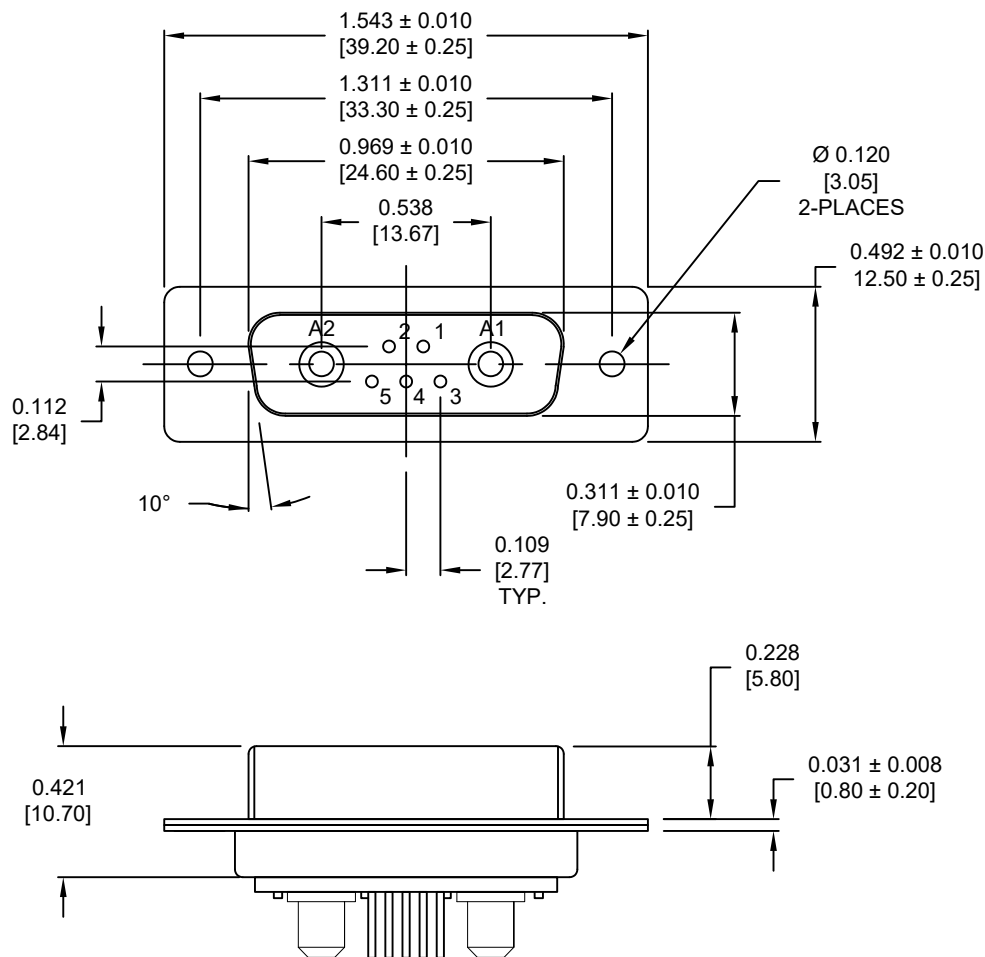
INSULATION RESISTANCE:	5 GΩ MIN.
DIELECTRIC WITHSTANDING VOLTAGE:	1000 VAC FOR 1 MIN
WORKING VOLTAGE:	250V
OPERATING TEMPERATURE:	-55°C TO +125°C
POWER CONTACT RESISTANCE:	2.0 mΩ MAX.
SIGNAL CONTACT RESISTANCE:	10 mΩ MAX.
POWER PINS:	40 AMPS
SIGNAL PINS:	5 AMPS

MECHANICAL:

CONTACT INSERTION FORCE:	4.5 Kg MAX.
CONTACT SEPARATION FORCE:	0.3 Kg MIN.

MATERIALS:

CONTACTS:	COPPER ALLOY, GOLD FLASH
INSULATOR:	PBT UL94V-0 RATED 230°C PROCESS TEMP.
SEAL:	F04 FLEXIBLE ADHESIVE
SHELL:	NICKEL PLATED STEEL
HARDWARE:	NICKEL PLATED BRASS



681S7W2203LYYY

- 0 = 40 AMP
- 0 = NO HARDWARE
- 4 = 0.237" BOARDLOCK PCB SIDE
- 1 = GOLD FLASH

MEETS IP67 STANDARDS
(SEE PAGE 2 FOR SEALING DETAILS)

RoHS COMPLIANT

UNITS = INCHES [MM] **DO NOT SCALE FROM DRAWING**



THESE DRAWINGS AND SPECIFICATIONS ARE THE PROPERTY OF NorComp AND SHALL NOT BE REPRODUCED, COPIED OR USED AS THE BASIS FOR THE MANUFACTURE OR SALE OF APPARATUS WITHOUT WRITTEN PERMISSION.

DRAWN:
P. JENKINS

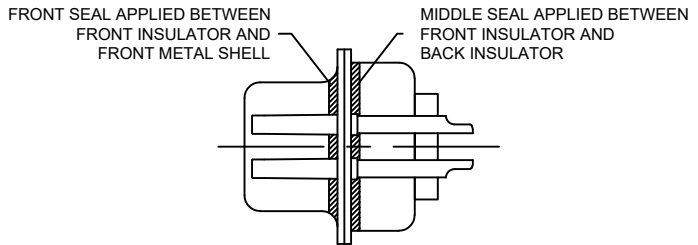
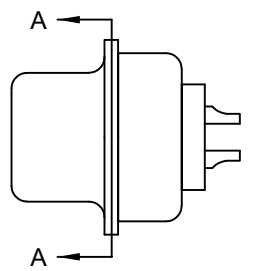
DATE:
07/19/2011

NorComp

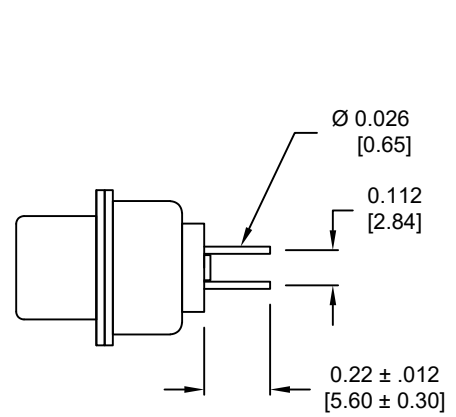
SCALE: NTS	SHEET 1	OF 3	REV 4
---------------	------------	---------	----------

DWG NO. **681S7W2203LYYY**

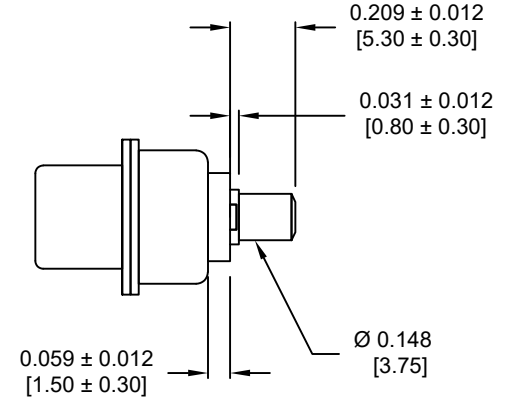
NOTE: SIGNAL AND POWER CONTACTS COME PRE-LOADED INTO INSULATORS



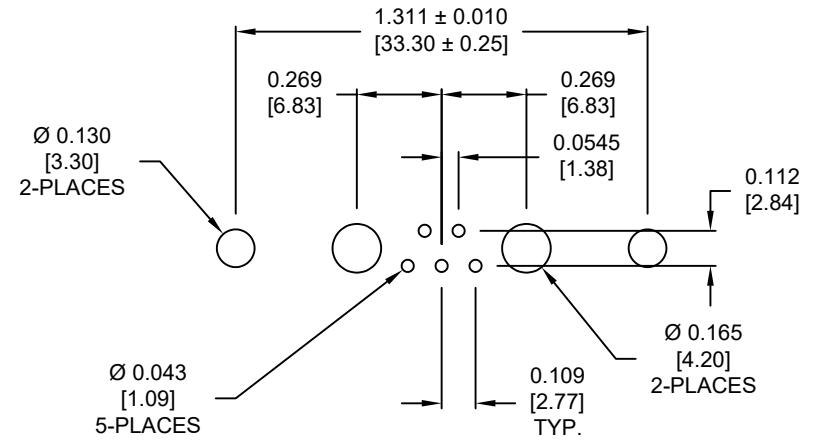
DETAIL A-A
SHOWN FOR REFERENCE ONLY



SIGNAL CONTACTS



POWER CONTACTS



RECOMMENDED PCB LAYOUT
(TOLERANCE ± 0.002 [0.05])

RoHS COMPLIANT

UNITS = INCHES [MM] DO NOT SCALE FROM DRAWING

	THESE DRAWINGS AND SPECIFICATIONS ARE THE PROPERTY OF NorComp AND SHALL NOT BE REPRODUCED, COPIED OR USED AS THE BASIS FOR THE MANUFACTURE OR SALE OF APPARATUS WITHOUT WRITTEN PERMISSION.	DRAWN: P. JENKINS
		DATE: 07/19/2011

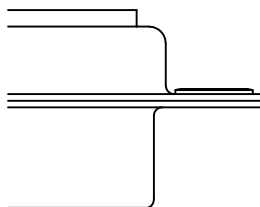
NorComp

SCALE: NTS	SHEET 2 OF 3	REV 4
DWG NO. 681S7W2203LYYY		

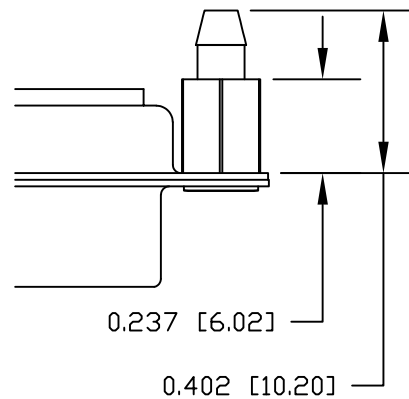
ALL CLINCH-NUTS ARE 4-40 INTERNAL THREADS

TOLERANCE:
ALL DIMENSIONS ARE ±0.010

0 NO HARDWARE



4 0.237" PCB SIDE



RoHS COMPLIANT

UNITS = INCHES [MM] DO NOT SCALE FROM DRAWING



THESE DRAWINGS AND SPECIFICATIONS ARE THE PROPERTY OF NorComp AND SHALL NOT BE REPRODUCED, COPIED OR USED AS THE BASIS FOR THE MANUFACTURE OR SALE OF APPARATUS WITHOUT WRITTEN PERMISSION.

DRAWN:
P. JENKINS

DATE:
07/19/2011

NorComp

SCALE:
NTS

SHEET 3 OF 3

REV 4

DWG NO. 681S7W2203LYYY