



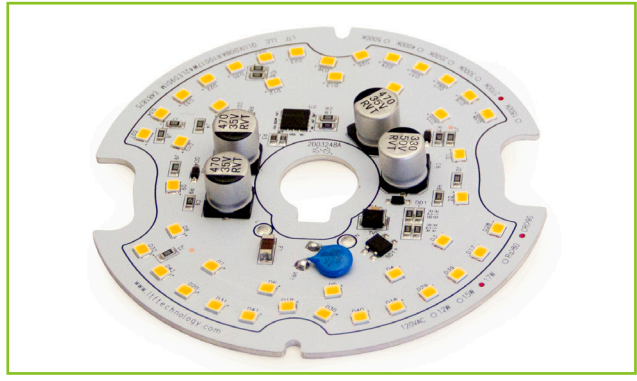
L.T.F.

DOB AC Line Voltage LED Boards



**Dim-to-Warm 17W Round 100mm (OD)
QLUXDOBAR10017W42LEDWDM DOB Series**

QLUX DOB



Wattage	17W
Input	120V AC 50/60 Hz
CRI	90+
CCT	3000K dims to 1800K
Custom CCT	Available
Size	100mm (OD)
Dimming	ELV, Triac
Optional Dimming	0-10V
Beam Angle	160°



RoHS



FEATURES

- Exceeds California Title 24 requirements
- AC line voltage driver on board module; No external drivers or transformers required
- Dim-to-Warm feature; 3000K changes to a warm cozy 1800K when dimmed
- High efficacy lumen output: > 74 lm/W
- Smooth dimming with ELV & Triac dimmers
- Optional 0-10V dimming
- 220-240V, 277V AC input with optional voltage converter
- LM-80 compliant LEDs

- High Color Renedering Index (CRI) 90+
- Tight binning 3 Step Mac Adam Ellipses
- Low heat generation, easy thermal management
- L70 > 60,000 Hours



APPLICATIONS

- New or retrofit OEM fixtures
- Indoor or outdoor applications
- Architectural and commercial
- Flush mount and recessed fixtures



AVAILABLE CONFIGURATIONS

Model	CRI	CCT		Lumens
		CCT (no dim)	CCT (100% dim)	
QLUXDOBAR1004217WLED930KWDM	90+	3000K	1800K	1250lm

Custom CCT available

[1] Luminous flux and efficacy are typical value, measured by an integrated sphere at 25°C, tolerance: ± 10%;
 [2] Ra/CRI is measured with tolerance: ± 2;
 [3] Tolerance of power: ± 1W.

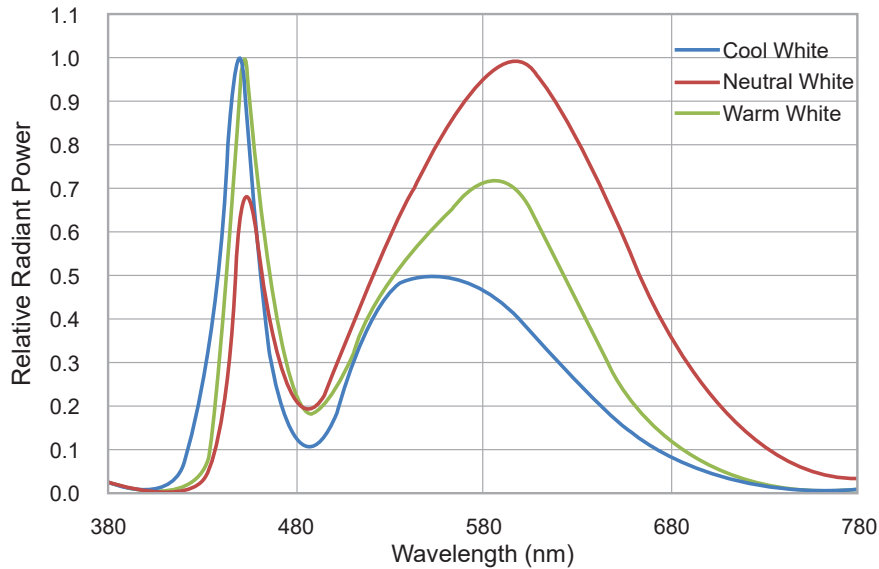


L.T.F.

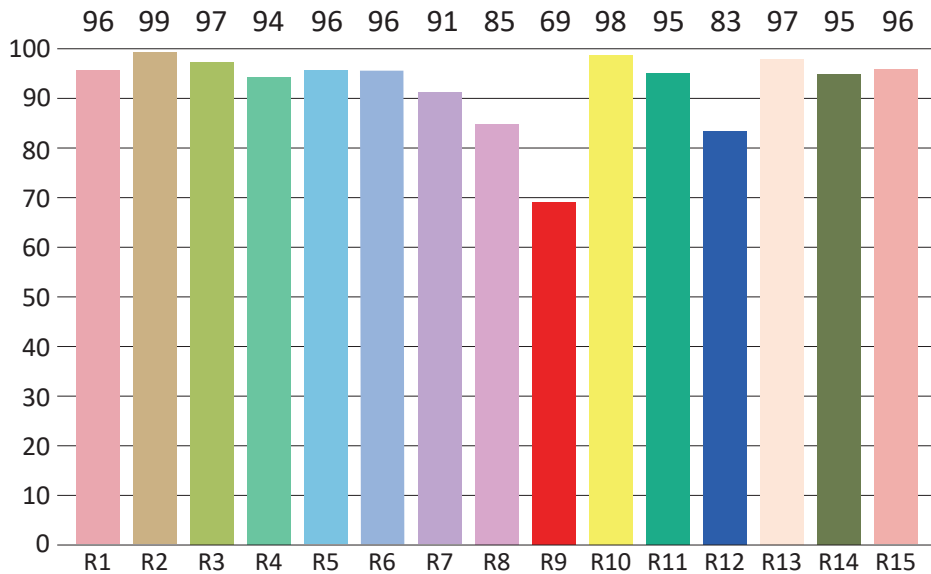
DOB AC Line Voltage LED Boards

Dim-to-Warm 17W Round 100mm (OD)
QLUXDOBAR10017W42LEDWDM DOB Series

SPECTRORADIOMETRIC CHARACTERISTICS



CRI TEST RESULTS



R1 = 96	R2 = 99	R3 = 97	R4 = 94	R5 = 96	R6 = 96	R7 = 91	R8 = 85
R9 = 69	R10 = 98	R11 = 95	R12 = 83	R13 = 97	R14 = 95	R15 = 96	

* Test result shown based on 3000K CCT (no dim)

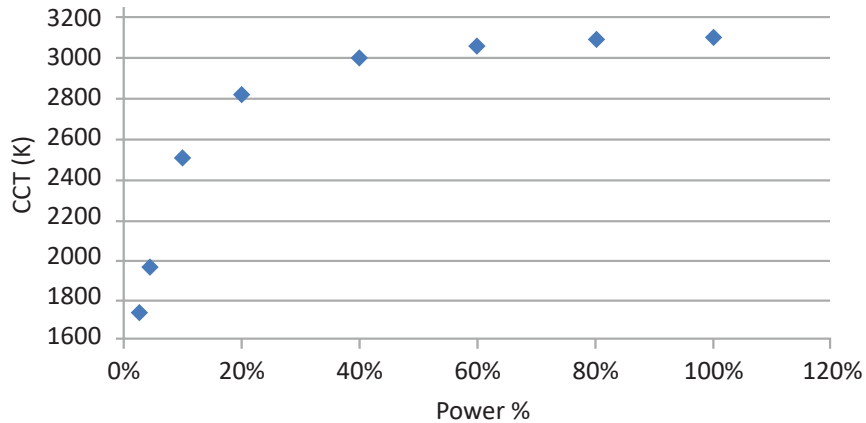


L.T.F.

DOB AC Line Voltage LED Boards

**Dim-to-Warm 17W Round 100mm (OD)
QLUXDOBAR10017W42LEDWDM DOB Series**

CCT (K) VS. DIMMING PERCENT



ABSOLUTE MAXIMUM RATINGS (Ta=25°C)

Parameter	Symbol	Value	Unit
Voltage	V in	132	Vac
Operating Temperature	---	-35~+50	°C
LED Solder Temperature	Ts	110	°C
Storage Temperature	Tstg	-40~+100	°C
ESD Sensitivity (HBM)	---	±4000	V
Surge	---	2500	Vac

MECHANICAL SPECIFICATIONS

