



ANATECH ELECTRONICS INC
RF & Microwave Filters & Products

265.6 MHz LC Bandpass Filter

Part Number: AE265.6B4604



Electrical Specifications

Center Frequency: 265.6 MHz
Bandwidth: 93.29 MHz
Passband : 223.1 MHz to 316.3 MHz
Insertion Loss: <4.0dB
Rejection: >40dB @ 188.6 MHz
Rejection: >40dB @ 374.1 MHz
Impedance: 50 Ohms

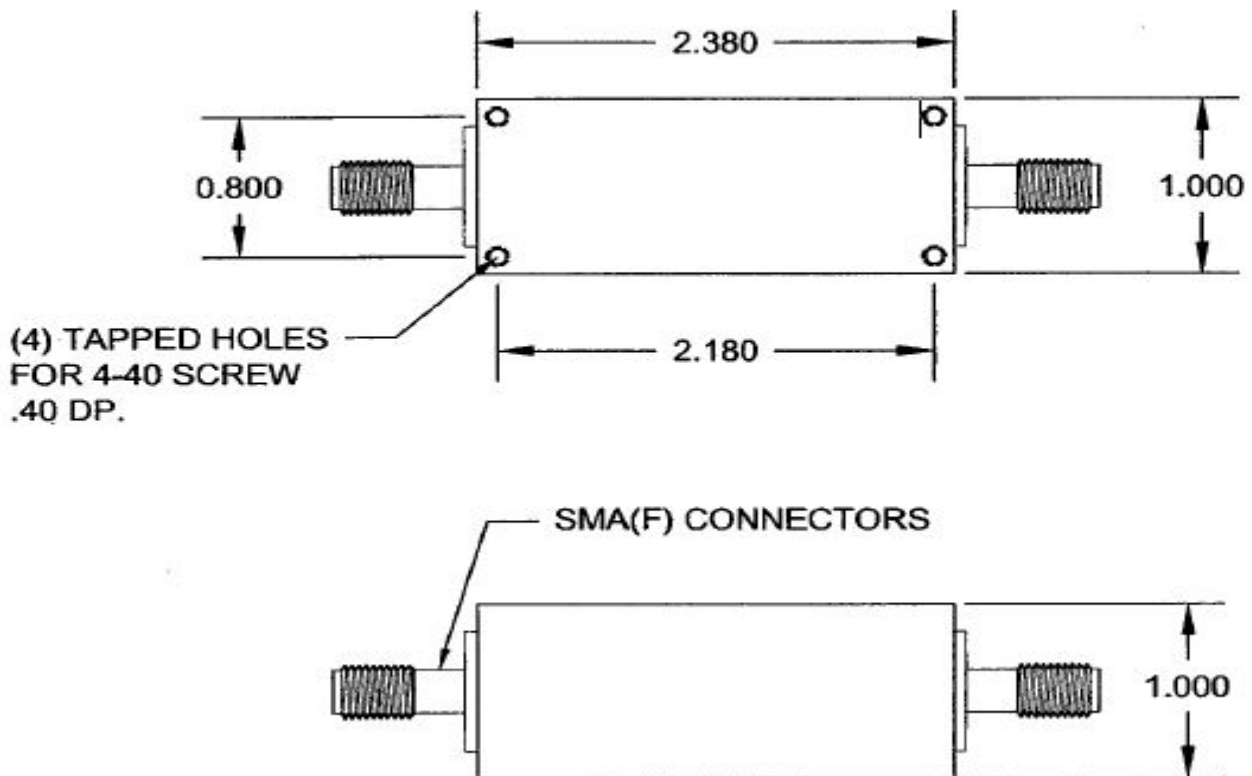
Mechanical

Connector Type: SMA(F)
Dimensions: 2.38" x 1.0" x 1.0" in.

Environmental

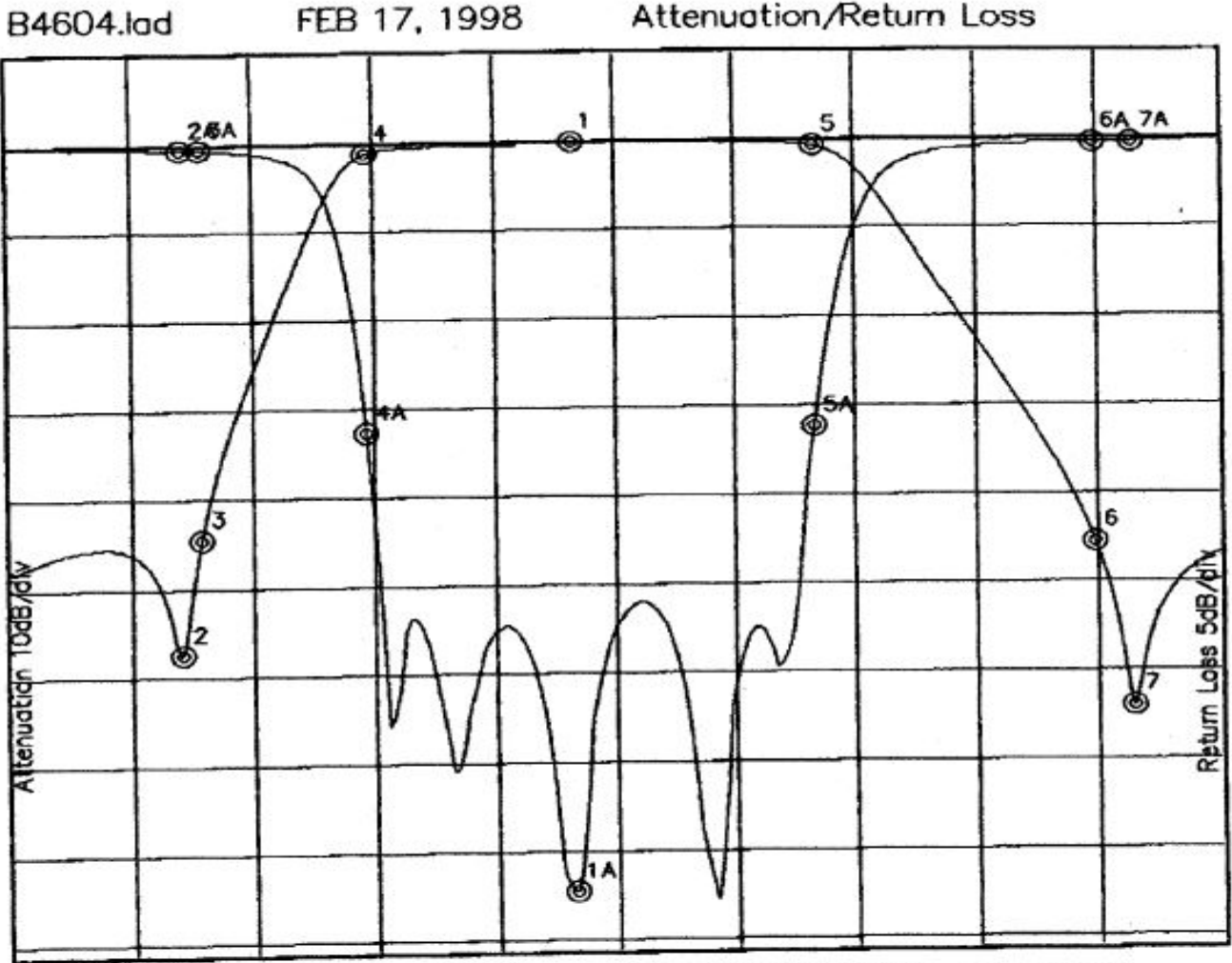
Operating Temperature: -25°C to +70°C
Storage Temperature: -40°C to +90°C
Shock: 10 G. 11ms
Vibration: 10 G. 5 to 200Hz

Outline Drawing:





Response Plot:



Attenuation Start: 150.0MHz Stop: 400.0MHz

Return Loss Start: 150.0MHz Stop: 400.0MHz

Offset -0.6521dB

- Marker 1 Freq 265.91MHz Atten -0.053dB
- Marker 2 Freq 184.73MHz Atten -57.226dB
- Marker 3 Freq 188.77MHz Atten -44.451dB
- Marker 4 Freq 223.10MHz Atten -1.168dB
- Marker 5 Freq 316.39MHz Atten -0.681dB
- Marker 6 Freq 374.15MHz Atten -45.247dB
- Marker 7 Freq 382.22MHz Atten -63.699dB

- Marker 1A Freq 265.91MHz Ret Loss -42.032dB
- Marker 2A Freq 184.73MHz Ret Loss -0.216dB
- Marker 3A Freq 188.77MHz Ret Loss -0.259dB
- Marker 4A Freq 223.10MHz Ret Loss -16.351dB
- Marker 5A Freq 316.39MHz Ret Loss -16.085dB
- Marker 6A Freq 374.15MHz Ret Loss -0.193dB
- Marker 7A Freq 382.22MHz Ret Loss -0.163dB