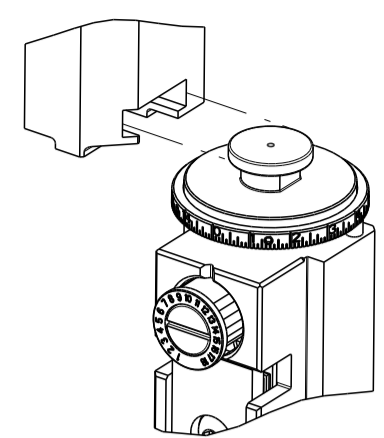


PART NUMBER	REVISION	DESCRIPTION	FEED TYPE
2266457-2	J	FINE CRIMP HEIGHT ADJUST	PNEUMATIC
7-2266457-2	J	PNEUMATIC AND CRIMP TOOLING KIT	PNEUMATIC
7-2266457-7	H	CRIMP TOOLING KIT	-

ATLANTIC VERSION TERMINATOR INTERFACE ADAPTER



APPLICATOR DATA		
CRIMP	SIZE	TYPE
WIRE	4.06 mm [.160]	F
INSUL	5.08 mm [.200]	O

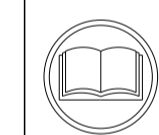
APPLICATOR INSTRUCTIONS 408-35042

TERMINAL DATA: TE TERMINAL TE CRIMP SPECIFICATION			
TERMINAL NAME: MCON 8 CONTACT			
WIRE STRIP LENGTH	INSULATION DIAMETER RANGE		
7.40-8.00 mm [.291-.315 IN]	Ø2.70-3.70 mm [.106-.146 IN]		
TERMINAL APPLICATION SPECIFICATION	114-94285	-	-
TERMINALS APPLIED Δ 5 Δ 6			
TE TERMINAL	TE TERMINAL	TE TERMINAL	TE TERMINAL
1-2208762-3	5-2208762-3		

TERMINAL DATA: TE TERMINAL TE CRIMP SPECIFICATION			
TERMINAL NAME: MCON 8 CONTACT			
WIRE STRIP LENGTH	INSULATION DIAMETER RANGE		
7.40-8.00 mm [.291-.315 IN]	Ø2.70-3.70 mm [.106-.146 IN]		
TERMINAL APPLICATION SPECIFICATION	114-94761	-	-
TERMINALS APPLIED Δ 5 Δ 6			
TE TERMINAL	TE TERMINAL	TE TERMINAL	TE TERMINAL
1-2208762-3	5-2208762-3		

WIRE SIZE	CRIMP HEIGHT mm [INCH]	CRIMP HEIGHT REFERENCE SETTING
4.00mm2	2.46 +/- 0.05 [.097 +/- .002]	7.0
2.50mm2	2.20 +/- 0.05 [.087 +/- .002]	9.8

WIRE SIZE	CRIMP HEIGHT mm [INCH]	CRIMP HEIGHT REFERENCE SETTING
2.50mm2	2.10 +/- 0.05 [.083 +/- .002]	10.8



- Δ RECOMMENDED SPARE PARTS
- Δ REFER TO SUPPLIED INSTRUCTION SHEET FOR CLEANING, LUBRICATION AND STORAGE OF APPLICATOR.
- Δ APPLY PART NUMBER 2-23419-6 LOCTITE TO THREADS OF ITEM 242.
- Δ CRIMP HEIGHT REFERENCE SETTING WAS THE SETTING USED WHEN THE APPLICATOR WAS QUALIFIED AT THE FACTORY. ADJUSTMENT MAY BE NECESSARY WHEN RUNNING APPLICATOR IN THE FIELD.
- Δ TERMINAL PITCH NOT COMPATIBLE WITH MECHANICAL FEED.
- Δ TERMINAL LUBRICANT RECOMMENDED.
- 7. UNLESS SPECIFIED OTHERWISE TORQUE VALUES SHALL BE USED PER DOCUMENT, 101-35000.

***WARNING**
 ON INSTALLATION, SET WIRE DISC TO CRIMP HEIGHT REFERENCE SETTING FOR LARGEST WIRE SIZE. CRIMP HEIGHT REFERENCE SETTINGS GREATER THAN THE VALUE SHOWN MAY CAUSE DAMAGE TO THE CRIMP TOOLING, REFER TO THE INSTRUCTION SHEET FOR PROPER SETUP AND ADJUSTMENTS.

LOC	DIST	REVISIONS					
A	66	P	LTN	DESCRIPTION	DATE	DWN	APVD
		G		ECR-22-126591	14JAN2022	FJ	RK
		H		ECR-22-134182	29MAR2022	FZ	MP
		J		ECR-22-150396	25AUG2022	LG	JAH
		J1		ECR-22-157207	01NOV2022	TB	GB

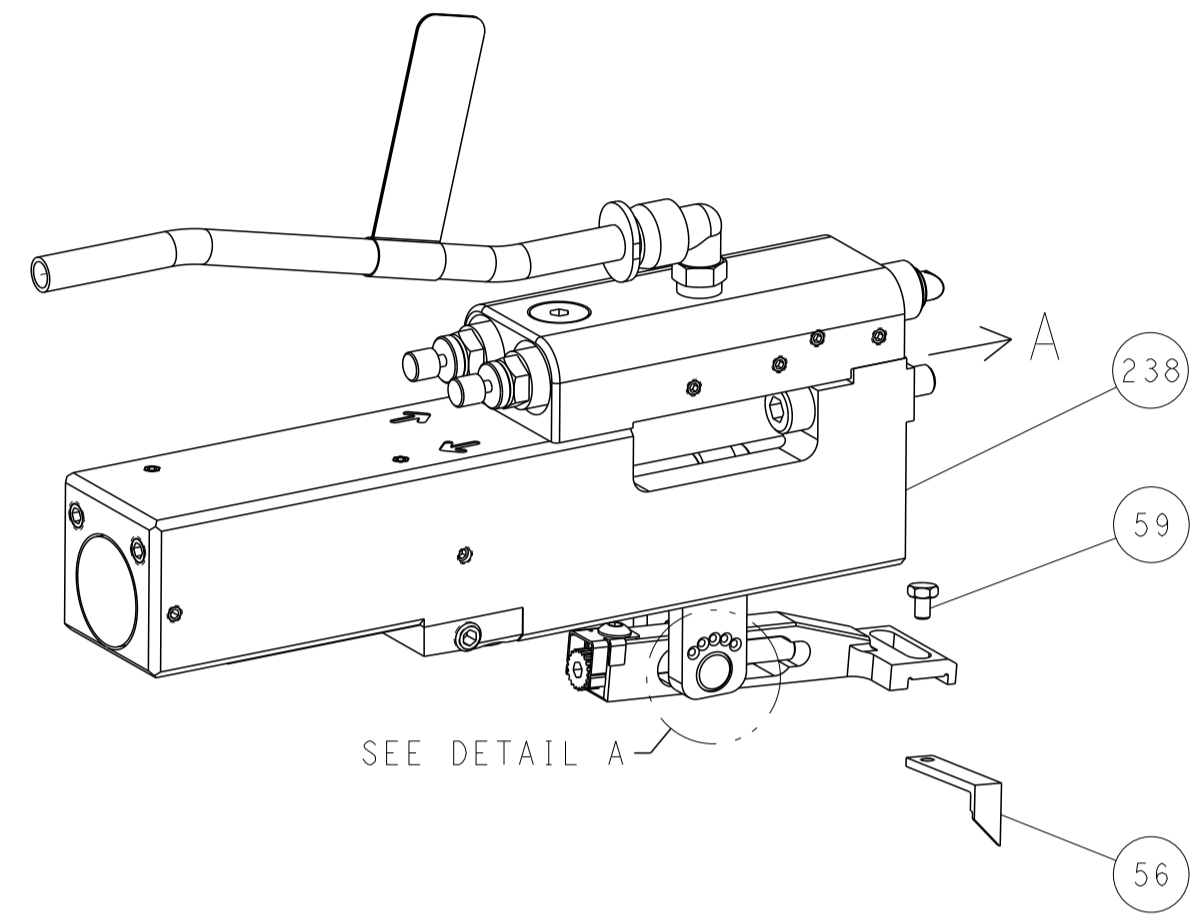
-	1	1	2119791-5	DEPRESSOR, WIRE	286	
-	1	1	2119641-1	FEED CAM, AIR FEED	248	
-	1	1	2119082-7	CAM, SNAIL, INSULATION ADJUSTMENT	244	
-	1	1	2079764-1	WASHER, WAVE SPRING, CREST-TO-CREST	243	
-	1	1	2119083-1	RETAINER, INSULATION DIAL	242	
-	1	1	7-18023-7	SCR, SKT HD CAP M3 X 4.0	241	
-	1	1	2844940-2	AIR FEED MODULE	238	
-	REF	REF	994970-2	COUNTER, MAGNETIC	164	
-	1	1	2119955-1	ASSY, LUBRICATOR, SIDE FEED	113	
-	1	1	2844908-1	SCREW, LOCKING	99	
-	1	1	2844907-1	POST, LOCKING	98	
-	1	1	1-455888-5	SPACER, CRIMPER	82	
-	2	2	2079383-4	SCR, BHSC, RoHS (M4 X 8)	79	
-	1	1	1803096-1	EXTENSION PLATE	78	
-	1	1	1803607-3	DOCUMENTATION PACKAGE	71	
-	1	1	2119943-1	WASHER, SPACER	69	
-	1	1	2119740-1	TAG, IDENTIFICATION	67	
-	2	2	2168078-1	SCREW, DRIVE, RH, RoHS, 2 x .188	66	
-	1	1	2168083-2	SCR, SKT HD CAP, RoHS, M4 X 8.0	60	
-	1	1	5-18022-5	SCR, HEX HD CAP, M4 X 6.0	59	
-	1	1	1338683-8	FEED PAWL	56	
-	4	4	2168083-3	SCR, SKT HD CAP, RoHS, M4 X 12.0	54	
-	2	2	2168083-9	SCR, SKT HD CAP, RoHS, M4 X 20	53	
-	1	1	5018030-1	NUT, HEX, REG, RoHS, M3	52	
-	1	1	1-811242-0	BUMPER, HOLD DOWN	51	
-	1	1	690753-2	SPACER, TONKER	50	
-	1	1	18023-9	SCR, SKT HD CAP M4 X 6.0	49	
-	1	1	1803583-9	APPLICATOR BASIC ASSEMBLY, SF	46	
-	1	1	1803515-2	RAM ASSEMBLY, SF ATLANTIC	44	
-	1	1	2-2079383-2	SCR, BHSC, RoHS (M8 X 45)	41	
-	1	1	5-1752356-0	SUPPORT, TERMINAL	34	
-	2	2	2079383-5	SCR, BHSC, RoHS (M4 X 20)	33	
-	2	2	2-2844962-6	SPACER, CYLINDRICAL, STRIP GUIDE	30	
-	1	1	2844992-1	ASSEMBLY, STRIP GUIDE	29	
-	1	1	2-455888-8	SPACER, CRIMPER	28	
-	1	1	2-1320928-3	STRIP GUIDE	24	
-	1	1	2168083-2	SCR, SKT HD CAP, RoHS, M4 X 8.0	21	
-	2	2	1-18028-2	WASHER, FLAT, REG M4	20	
-	1	1	2119533-1	STRIPPER, SIDE FEED	19	
-	1	1	2119806-1	INSERT, SHEAR	13	
-	1	1	3-22280-3	SPRING, COMPRESSION	12	
-	1	1	1-356885-4	STOP, SHEAR	11	
-	1	1	2119805-1	SHEAR HOLDER, FRONT	10	
-	1	1	318707-1	FLOATING SHEAR, FRONT	9	
-	1	2	1	5-1803054-6	ANVIL, COMBINATION	8
-	1	1	5-240641-1	SPACER	7	
-	-	-	-	-	6	
-	1	1	1-2119757-0	DEPRESSOR, SHEAR	5	
-	1	1	4-238011-6	BLOCK, CRIMPER SPACER	4	
-	1	2	1	3-1633965-9	CRIMPER, INSULATION O PREMIUM	3
-	1	1	455888-7	SPACER, CRIMPER	2	
-	1	2	1	1803610-2	CRIMPER, WIRE	1

DIMENSIONS:		TOLERANCES UNLESS OTHERWISE SPECIFIED:		MATERIAL:		FINISH:		WEIGHT:		SCALE:	
mm	0 PLC ±	1 PLC ±	2 PLC ±	3 PLC ±	4 PLC ±	ANGLES	FINISH			1:2	SHEET 1 OF 4
APVD		APVD		APVD		APVD		APVD		APVD	
G. BAILEY		T. ELRLIN		G. BAILEY		T. ELRLIN		G. BAILEY		T. ELRLIN	
06AUG2014		06AUG2014		06AUG2014		06AUG2014		06AUG2014		06AUG2014	
CHK		CHK		CHK		CHK		CHK		CHK	
G. BAILEY		T. ELRLIN		G. BAILEY		T. ELRLIN		G. BAILEY		T. ELRLIN	
06AUG2014		06AUG2014		06AUG2014		06AUG2014		06AUG2014		06AUG2014	
APVD		APVD		APVD		APVD		APVD		APVD	
G. BAILEY		T. ELRLIN		G. BAILEY		T. ELRLIN		G. BAILEY		T. ELRLIN	
06AUG2014		06AUG2014		06AUG2014		06AUG2014		06AUG2014		06AUG2014	
CHK		CHK		CHK		CHK		CHK		CHK	
G. BAILEY		T. ELRLIN		G. BAILEY		T. ELRLIN		G. BAILEY		T. ELRLIN	
06AUG2014		06AUG2014		06AUG2014		06AUG2014		06AUG2014		06AUG2014	
APVD		APVD		APVD		APVD		APVD		APVD	
G. BAILEY		T. ELRLIN		G. BAILEY		T. ELRLIN		G. BAILEY		T. ELRLIN	
06AUG2014		06AUG2014		06AUG2014		06AUG2014		06AUG2014		06AUG2014	
CHK		CHK		CHK		CHK		CHK		CHK	
G. BAILEY		T. ELRLIN		G. BAILEY		T. ELRLIN		G. BAILEY		T. ELRLIN	
06AUG2014		06AUG2014		06AUG2014		06AUG2014		06AUG2014		06AUG2014	
APVD		APVD		APVD		APVD		APVD		APVD	
G. BAILEY		T. ELRLIN		G. BAILEY		T. ELRLIN		G. BAILEY		T. ELRLIN	
06AUG2014		06AUG2014		06AUG2014		06AUG2014		06AUG2014		06AUG2014	
CHK		CHK		CHK		CHK		CHK		CHK	
G. BAILEY		T. ELRLIN		G. BAILEY		T. ELRLIN		G. BAILEY		T. ELRLIN	
06AUG2014		06AUG2014		06AUG2014		06AUG2014		06AUG2014		06AUG2014	
APVD		APVD		APVD		APVD		APVD		APVD	
G. BAILEY		T. ELRLIN		G. BAILEY		T. ELRLIN		G. BAILEY		T. ELRLIN	
06AUG2014		06AUG2014		06AUG2014		06AUG2014		06AUG2014		06AUG2014	
CHK		CHK		CHK		CHK		CHK		CHK	
G. BAILEY		T. ELRLIN		G. BAILEY		T. ELRLIN		G. BAILEY		T. ELRLIN	
06AUG2014		06AUG2014		06AUG2014		06AUG2014		06AUG2014		06AUG2014	
APVD		APVD		APVD		APVD		APVD		APVD	
G. BAILEY		T. ELRLIN		G. BAILEY		T. ELRLIN		G. BAILEY		T. ELRLIN	
06AUG2014		06AUG2014		06AUG2014		06AUG2014		06AUG2014		06AUG2014	
CHK		CHK		CHK		CHK		CHK		CHK	
G. BAILEY		T. ELRLIN		G. BAILEY		T. ELRLIN		G. BAILEY		T. ELRLIN	
06AUG2014		06AUG2014		06AUG2014		06AUG2014		06AUG2014		06AUG2014	
APVD		APVD		APVD		APVD		APVD		APVD	
G. BAILEY		T. ELRLIN		G. BAILEY		T. ELRLIN		G. BAILEY		T. ELRLIN	
06AUG2014		06AUG2014		06AUG2014		06AUG2014		06AUG2014		06AUG2014	
CHK		CHK		CHK		CHK		CHK		CHK	
G. BAILEY		T. ELRLIN		G. BAILEY		T. ELRLIN		G. BAILEY		T. ELRLIN	
06AUG2014		06AUG2014		06AUG2014		06AUG2014		06AUG2014		06AUG2014	
APVD		APVD		APVD		APVD		APVD		APVD	
G. BAILEY		T. ELRLIN		G. BAILEY		T. ELRLIN		G. BAILEY		T. ELRLIN	
06AUG2014		06AUG2014		06AUG2014		06AUG2014		06AUG2014		06AUG2014	
CHK		CHK		CHK		CHK		CHK		CHK	
G. BAILEY		T. ELRLIN		G. BAILEY		T. ELRLIN		G. BAILEY		T. ELRLIN	
06AUG2014		06AUG2014		06AUG2014		06AUG2014		06AUG2014		06AUG2014	
APVD		APVD		APVD		APVD		APVD		APVD	
G. BAILEY		T. ELRLIN		G. BAILEY		T. ELRLIN		G. BAILEY		T. ELRLIN	
06AUG2014		06AUG2014		06AUG2014		06AUG2014		06AUG2014		06AUG2014	
CHK		CHK		CHK		CHK		CHK		CHK	
G. BAILEY		T. ELRLIN		G. BAILEY		T. ELRLIN		G. BAILEY		T. ELRLIN	
06AUG2014		06AUG2014		06AUG2014		06AUG2014		06AUG2014		06AUG2014	
APVD		APVD		APVD		APVD		APVD		APVD	
G. BAILEY		T. ELRLIN		G. BAILEY		T. ELRLIN		G. BAILEY		T. ELRLIN	
06AUG2014		06AUG2014		06AUG2014		06AUG2014		06AUG2014		06AUG2014	
CHK		CHK		CHK		CHK		CHK		CHK	
G. BAILEY		T. ELRLIN		G. BAILEY		T. ELRLIN		G. BAILEY		T. ELRLIN	
06AUG2014		06AUG2014		06AUG2014		06AUG2014		06AUG2014		06AUG2014	
APVD		APVD		APVD		APVD		APVD		APVD	
G. BAILEY		T. ELRLIN		G. BAILEY		T. ELRLIN		G. BAILEY		T. ELRLIN	
06AUG2014		06AUG2014		06AUG2014		06AUG2014		06AUG2014		06AUG2014	
CHK		CHK		CHK		CHK		CHK		CHK	
G. BAILEY		T. ELRLIN		G. BAILEY		T. ELRLIN		G. BAILEY		T. ELRLIN	
06AUG2014		06AUG2014		06AUG2014		06AUG2014		06AUG2014		06AUG2014	
APVD		APVD		APVD		APVD		APVD		APVD	
G. BAILEY		T. ELRLIN		G. BAILEY		T. ELRLIN		G. BAILEY		T. ELRLIN	
06AUG2014		06AUG2014		06AUG2014		06AUG2014		06AUG2014		06AUG2014	
CHK		CHK		CHK		CHK		CHK		CHK	
G. BAILEY		T. ELRLIN		G. BAILEY		T. ELRLIN		G. BAILEY		T. ELRLIN	
06AUG2014		06AUG2014		06AUG2014		06AUG2014		06AUG2014		06AUG2014	
APVD		APVD		APVD		APVD		APVD		APVD	
G. BAILEY		T. ELRLIN		G. BAILEY		T. ELRLIN		G. BAILEY			

LOC	DIST	REVISIONS					
A	66	P	LYR	DESCRIPTION	DATE	OWN	APVD
		-		SEE SHEET 1			

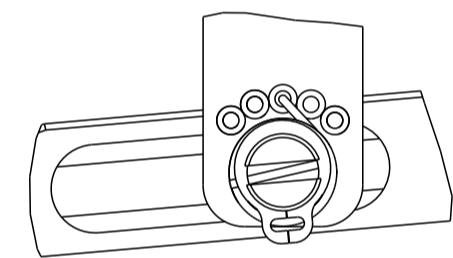
FEED TYPE

PNEUMATIC



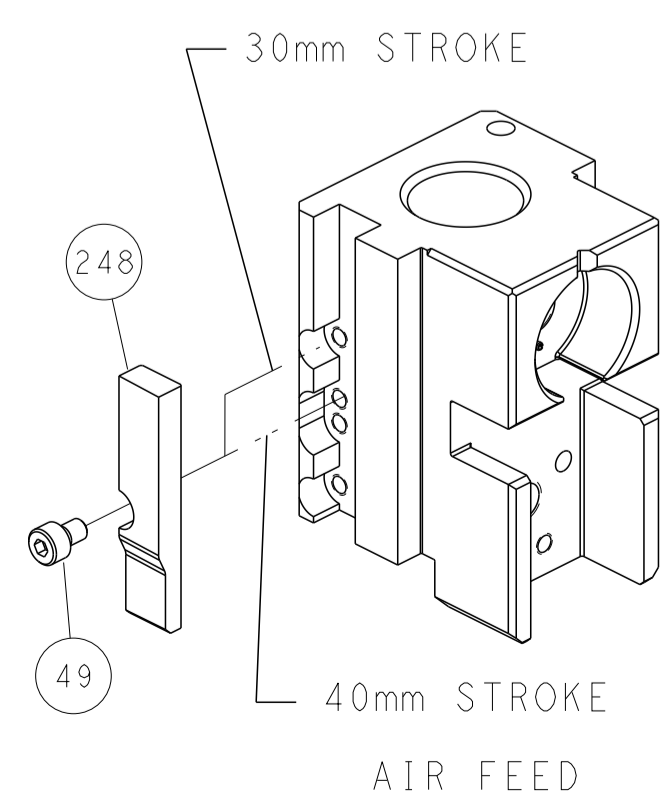
SEE DETAIL A

FEED SPRING SETTING POSITION
(SHOWN FROM REAR SIDE)

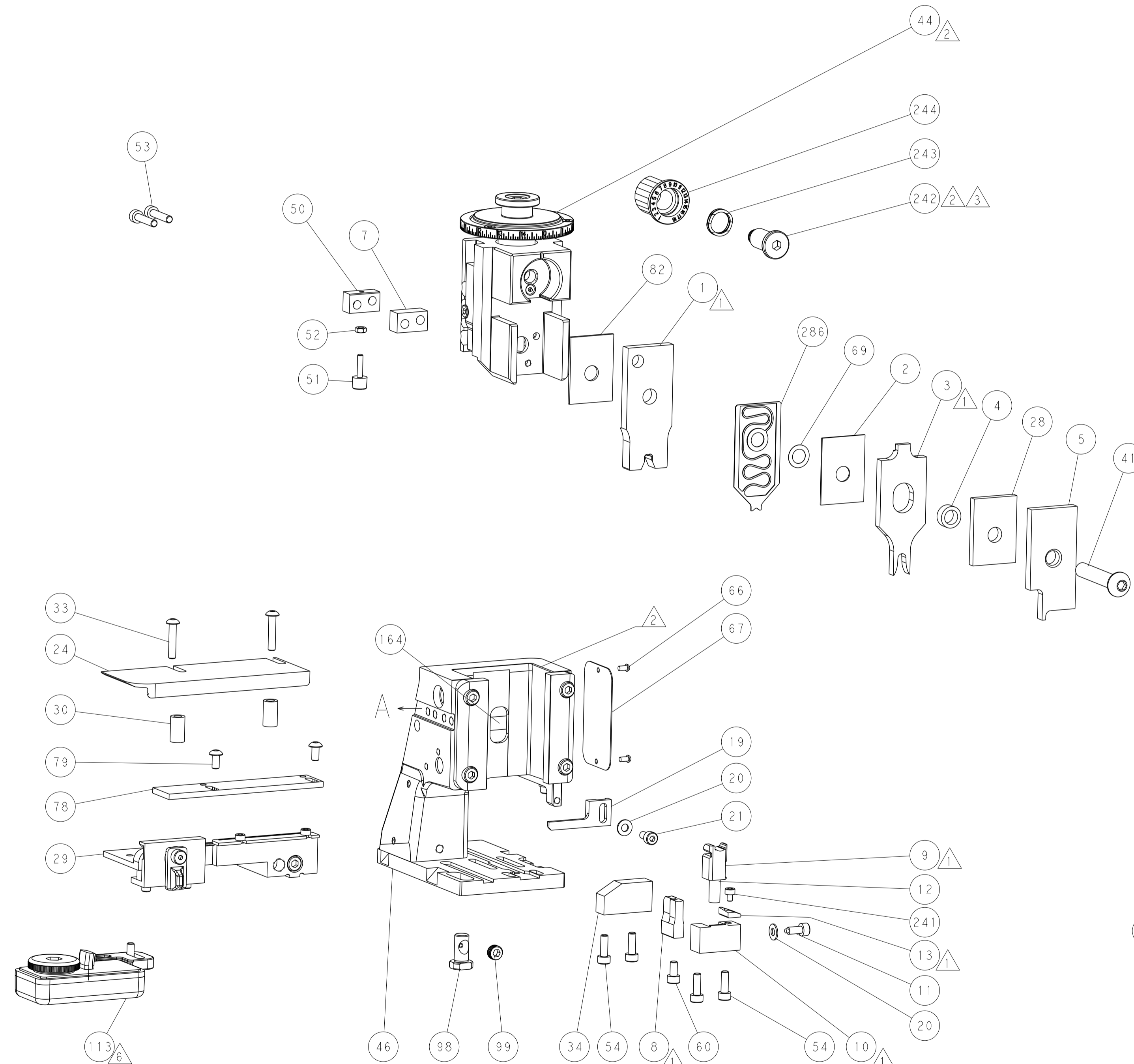


DETAIL A

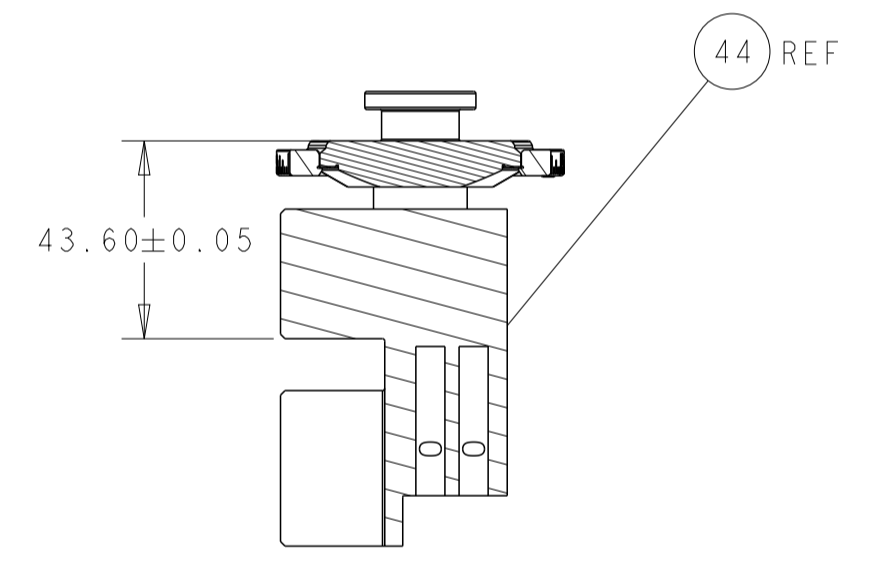
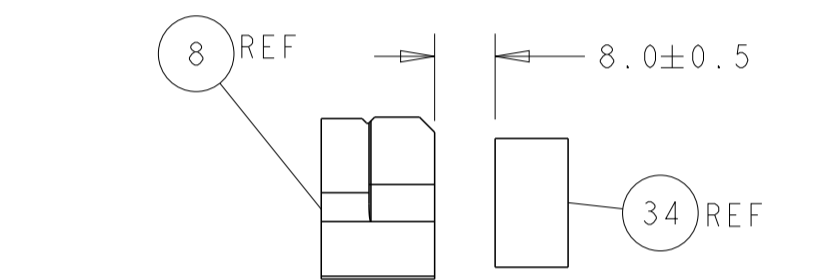
CAM POSITION



AIR FEED

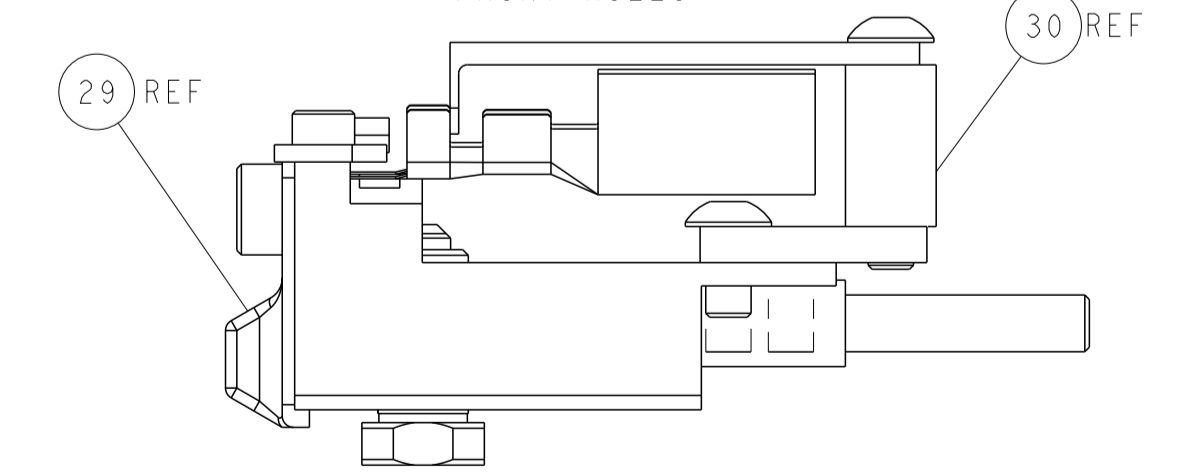


TERMINAL SUPPORT LOCATION



RAM SET-UP

ITEM 30 LOCATED AT
FRONT HOLES



FEED TRACK POSITION
GUIDE BY INSULATION BARREL

ATLANTIC VERSION
 Shown on sheets 1 of 4 & 2 of 4
 (Pacific version shown on sheets 3 of 4 & 4 of 4)

<small>THIS DRAWING IS UNPUBLISHED. RELEASED FOR PUBLICATION. ALL RIGHTS RESERVED. THIS IS THE PROPERTY OF TYCO ELECTRONICS CORPORATION. IT IS TO BE USED ONLY FOR THE PURPOSES AND IN THE MANNER SPECIFIED BY THE USER. NO PARTS OR INFORMATION CONTAINED HEREIN ARE TO BE REPRODUCED OR TRANSMITTED IN ANY FORM OR BY ANY MEANS, ELECTRONIC OR MECHANICAL, INCLUDING PHOTOCOPYING, RECORDING, OR BY ANY INFORMATION STORAGE AND RETRIEVAL SYSTEM, WITHOUT PERMISSION IN WRITING FROM TYCO ELECTRONICS CORPORATION.</small>		DWN: R. STAKEM 06AUG2014 CHK: G. BAILEY 06AUG2014 APVD: T. ELBIN 06AUG2014	TE Connectivity Harrisburg, PA 17105-3608
DIMENSIONS: mm 	TOLERANCES UNLESS OTHERWISE SPECIFIED: 0 PLC ± 1 PLC ± 2 PLC ± 3 PLC ± 4 PLC ± ANGLES ± FINISH	NAME: Ocean Side Feed Applicator SIZE: A1 CAGE CODE: 00779 DRAWING NO: 2266457	RESTRICTED TO: - SCALE: 1:2 SHEET: 2 OF 4 REV: J1
MATERIAL: - FINISH: -		WEIGHT: - Customer Accessible Production Drawing	SHEETS 3 & 4 ARE NOT REQUIRED FOR ATLANTIC VERSION

PART NUMBER	REVISION	DESCRIPTION	FEED TYPE
2-2266457-2	J	FINE CRIMP HEIGHT ADJUST	PNEUMATIC
7-2266457-7	H	CRIMP TOOLING KIT	-

PACIFIC VERSION TERMINATOR
 INTERFACE ADAPTER



APPLICATOR DATA		
CRIMP	SIZE	TYPE
WIRE	4.06 mm [.160]	F
INSUL	5.08 mm [.200]	O

APPLICATOR INSTRUCTIONS
 408-35042

TERMINAL DATA: TE TERMINAL		TE CRIMP SPECIFICATION	
TERMINAL NAME: MCON 8 CONTACT			
WIRE STRIP LENGTH		INSULATION DIAMETER RANGE	
7.40-8.00 mm [.291-.315 IN]		Ø2.70-3.70 mm [.106-.146 IN]	
TERMINAL APPLICATION SPECIFICATION	114-94285	-	-
TERMINALS APPLIED			
TE TERMINAL	TE TERMINAL	TE TERMINAL	TE TERMINAL
1-2208762-3	5-2208762-3		

TERMINAL DATA: TE TERMINAL		TE CRIMP SPECIFICATION	
TERMINAL NAME: MCON 8 CONTACT			
WIRE STRIP LENGTH		INSULATION DIAMETER RANGE	
7.40-8.00 mm [.291-.315 IN]		Ø2.70-3.70 mm [.106-.146 IN]	
TERMINAL APPLICATION SPECIFICATION	114-94761	-	-
TERMINALS APPLIED			
TE TERMINAL	TE TERMINAL	TE TERMINAL	TE TERMINAL
1-2208762-3	5-2208762-3		

WIRE SIZE	CRIMP HEIGHT mm [INCH]	CRIMP HEIGHT REFERENCE SETTING
4.00mm2	2.46+/-0.05 [.097+/- .002]	7.0
2.50mm2	2.20+/-0.05 [.087+/- .002]	9.8

WIRE SIZE	CRIMP HEIGHT mm [INCH]	CRIMP HEIGHT REFERENCE SETTING
2.50mm2	2.10+/-0.05 [.083+/- .002]	10.8



- RECOMMENDED SPARE PARTS
- REFER TO SUPPLIED INSTRUCTION SHEET FOR CLEANING, LUBRICATION AND STORAGE OF APPLICATOR.
- APPLY PART NUMBER 2-23419-6 LOCTITE TO THREADS OF ITEM 242.
- CRIMP HEIGHT REFERENCE SETTING WAS THE SETTING USED WHEN THE APPLICATOR WAS QUALIFIED AT THE FACTORY. ADJUSTMENT MAY BE NECESSARY WHEN RUNNING APPLICATOR IN THE FIELD.
- TERMINAL PITCH NOT COMPATIBLE WITH MECHANICAL FEED.
- TERMINAL LUBRICANT RECOMMENDED.
- 7. UNLESS SPECIFIED OTHERWISE TORQUE VALUES SHALL BE USED PER DOCUMENT, 101-35000.

***WARNING**
 ON INSTALLATION, SET WIRE DISC TO CRIMP HEIGHT REFERENCE SETTING FOR LARGEST WIRE SIZE. CRIMP HEIGHT REFERENCE SETTINGS GREATER THAN THE VALUE SHOWN MAY CAUSE DAMAGE TO THE CRIMP TOOLING, REFER TO THE INSTRUCTION SHEET FOR PROPER SETUP AND ADJUSTMENTS.

PACIFIC VERSION
 Shown on sheets 3 of 4 & 4 of 4
 (Atlantic version shown on sheets 1 of 4 & 2 of 4)

LOC	DIST	REV	DATE	BY	APPD
A	66	-	-	-	-

REVISIONS					
REV	DATE	BY	DESCRIPTION	DATE	APPD
-	1	2119791-5	DEPRESSOR, WIRE		286
-	1	2119082-7	CAM, SNAIL, INSULATION ADJUSTMENT		244
-	1	2079764-1	WASHER, WAVE SPRING, CREST-TO-CREST		243
	1	2119083-1	RETAINER, INSULATION DIAL		242
-	1	7-18023-7	SCR, SKT HD CAP M3 X 4.0		241
-	1	2844940-2	AIR FEED MODULE		238
-	REF	994970-2	COUNTER, MAGNETIC		164
-	1	2119641-2	FEED CAM, AIR FEED		151
-	1	2168083-8	SCR, SKT HD CAP, RoHS, M4 X 16		144
-	4	2168083-9	SCR, SKT HD CAP, RoHS, M4 X 20		143
-	1	1-1803583-0	APPLICATOR BASIC ASSEMBLY, SF		141
-	1	1803516-2	RAM ASSEMBLY, SF PACIFIC		140
	1	2119955-1	ASSY, LUBRICATOR, SIDE FEED		113
-	1	2844908-1	SCREW, LOCKING		99
-	1	2844907-1	POST, LOCKING		98
-	1	1-455888-5	SPACER, CRIMPER		82
-	2	2079383-4	SCR, BHSC, RoHS (M4 X 8)		79
-	1	1803096-1	EXTENSION PLATE		78
-	1	1803607-3	DOCUMENTATION PACKAGE		71
-	1	2119943-1	WASHER, SPACER		69
-	1	2119740-1	TAG, IDENTIFICATION		67
-	2	2168078-1	SCREW, DRIVE, RH, RoHS, 2 x .188		66
-	1	5-18022-5	SCR, HEX HD CAP, M4 X 6.0		59
-	1	1338683-8	FEED PAWL		56
-	2	2168083-9	SCR, SKT HD CAP, RoHS, M4 X 20		53
-	1	5018030-1	NUT, HEX, REG, RoHS, M3		52
-	1	1-811242-0	BUMPER, HOLD DOWN		51
-	1	690753-2	SPACER, TONKER		50
-	1	18023-9	SCR, SKT HD CAP M4 X 6.0		49
-	1	2-2079383-2	SCR, BHSC, RoHS (M8 X 45)		41
-	1	5-1752356-0	SUPPORT, TERMINAL		34
-	2	2079383-5	SCR, BHSC, RoHS (M4 X 20)		33
-	2	2-2844962-6	SPACER, CYLINDRICAL, STRIP GUIDE		30
-	1	2844992-1	ASSEMBLY, STRIP GUIDE		29
-	1	2-455888-8	SPACER, CRIMPER		28
-	1	2-1320928-3	STRIP GUIDE		24
-	1	2168083-2	SCR, SKT HD CAP, RoHS, M4 X 8.0		21
-	2	1-18028-2	WASHER, FLAT, REG M4		20
-	1	2119533-1	STRIPPER, SIDE FEED		19
	1	2119806-1	INSERT, SHEAR		13
-	1	3-22280-3	SPRING, COMPRESSION		12
-	1	1-356885-4	STOP, SHEAR		11
	1	2119805-1	SHEAR HOLDER, FRONT		10
	1	318707-1	FLOATING SHEAR, FRONT		9
	1	5-1803054-6	ANVIL, COMBINATION		8
-	1	5-240641-1	SPACER		7
-	-	-	-		6
-	1	1-2119757-0	DEPRESSOR, SHEAR		5
-	1	4-238011-6	BLOCK, CRIMPER SPACER		4
	1	3-1633965-9	CRIMPER, INSULATION O PREMIUM		3
-	1	455888-7	SPACER, CRIMPER		2
	1	1803610-2	CRIMPER, WIRE		1

DIMENSIONS:		TOLERANCES UNLESS OTHERWISE SPECIFIED:		MATERIAL:	
mm	0 PLC ±	1 PLC ±	2 PLC ±	3 PLC ±	4 PLC ±
	ANGLES	FINISH			

OWN	CHK	APPD	DATE
J. STAKEM	G. BAILEY	J. ELRLN	06AUG2014

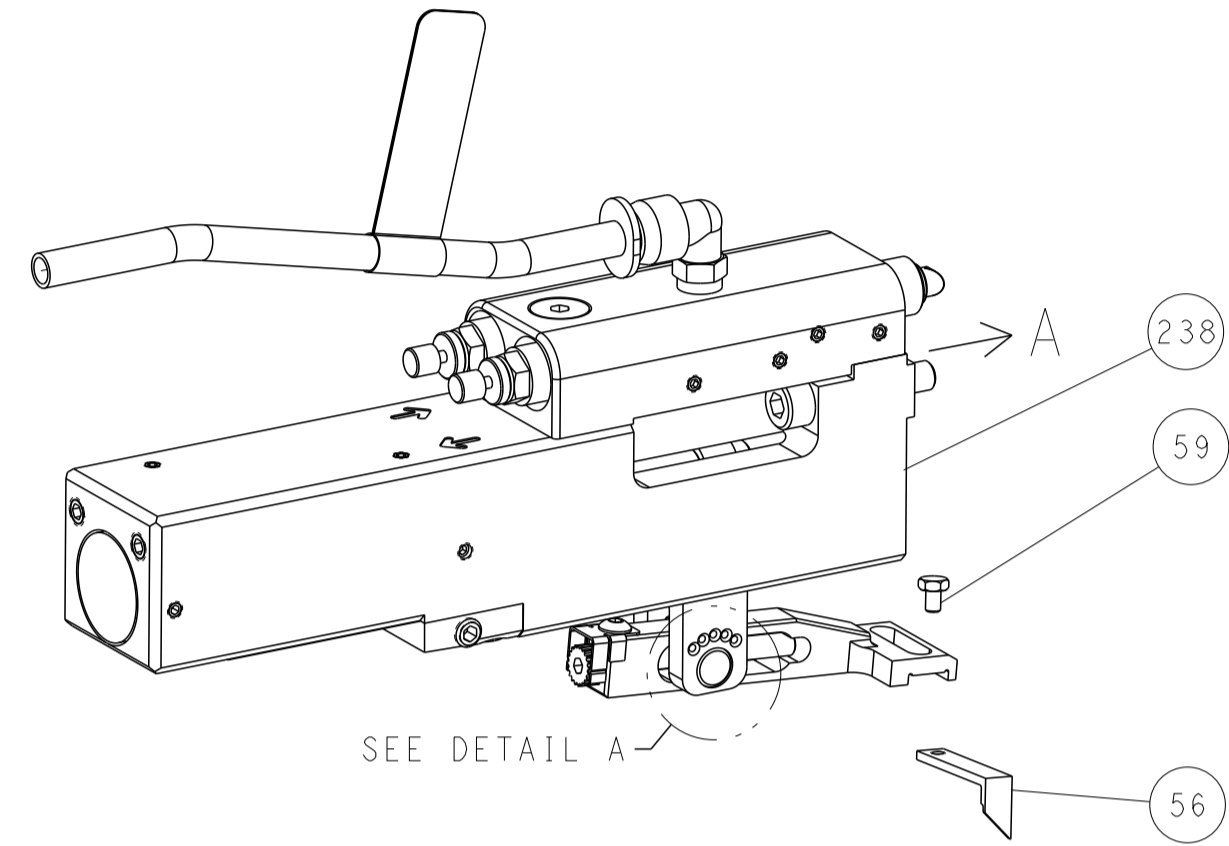
NAME	SIZE	CAGE CODE	DRAWING NO	RESTRICTED TO
Ocean Side Feed Applicator	A1	00779	2266457	

Customer Accessible Production Drawing SCALE 1:2 SHEET 3 OF 4 REV J1

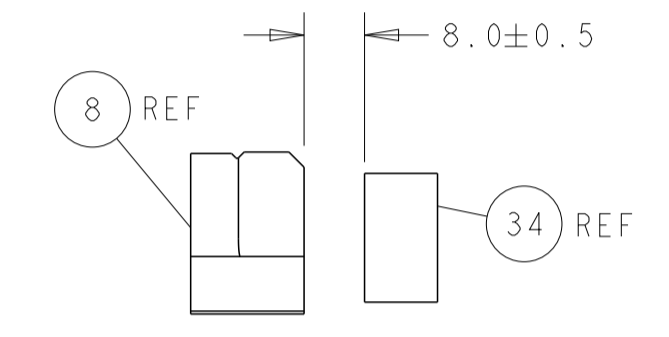
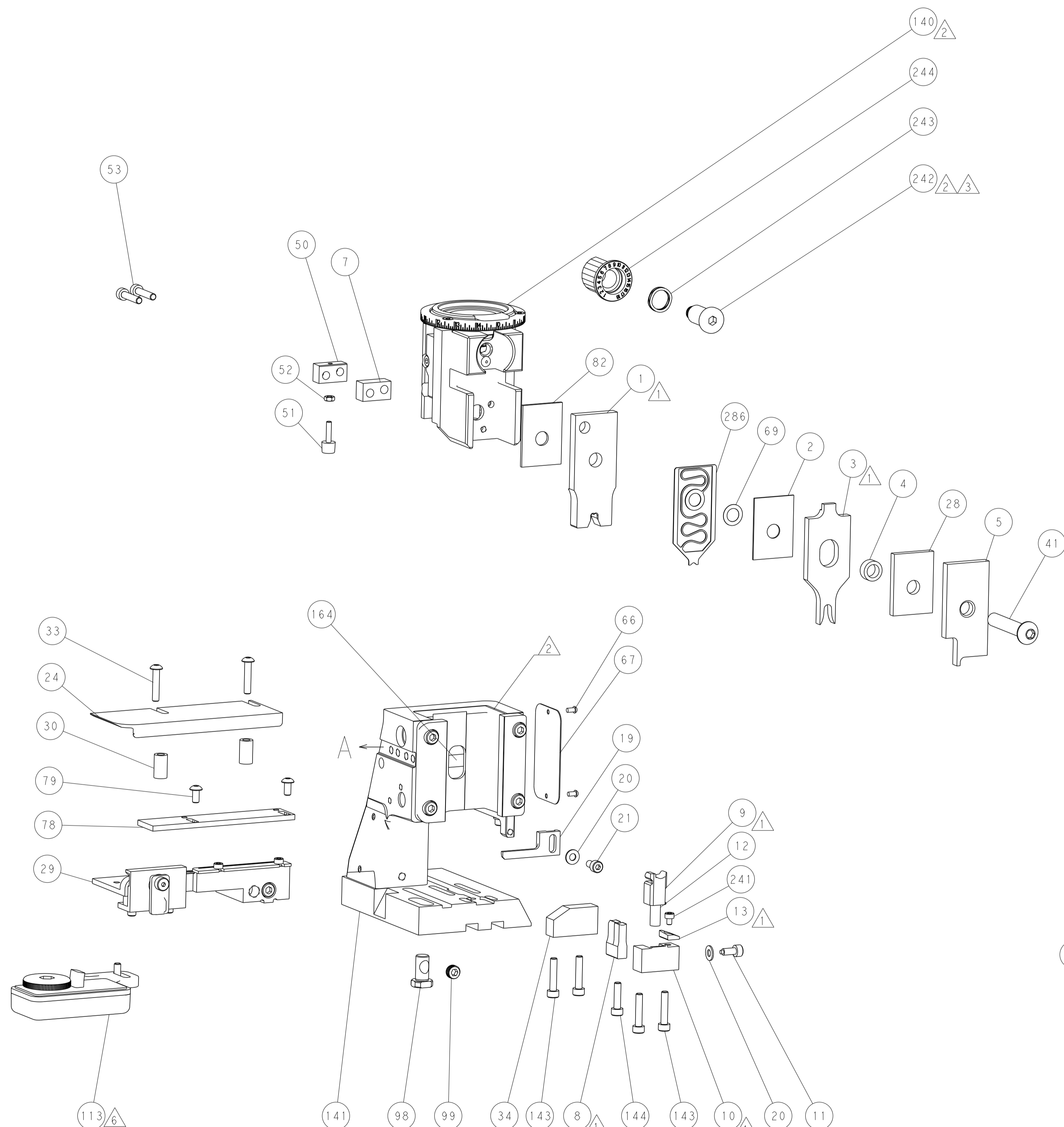
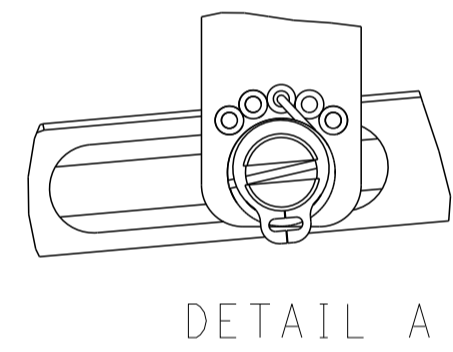
LOC	DIST	REVISIONS					
		P	LTN	DESCRIPTION	DATE	DWN	APVD
A	66	-	-	SEE SHEET 1	-	-	-

FEED TYPE

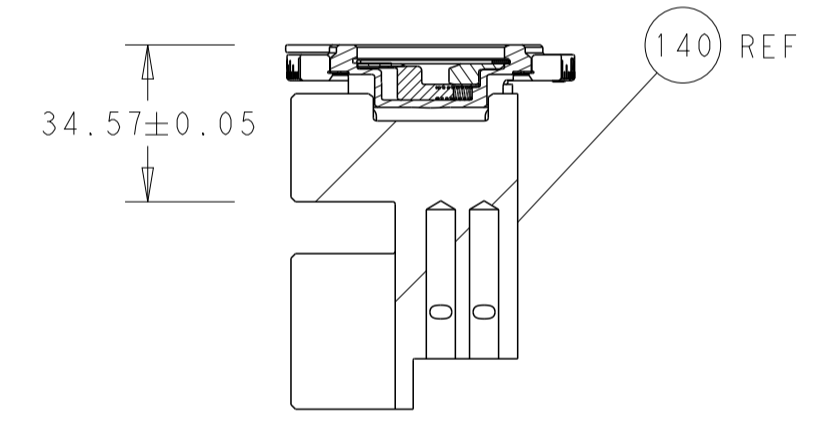
PNEUMATIC



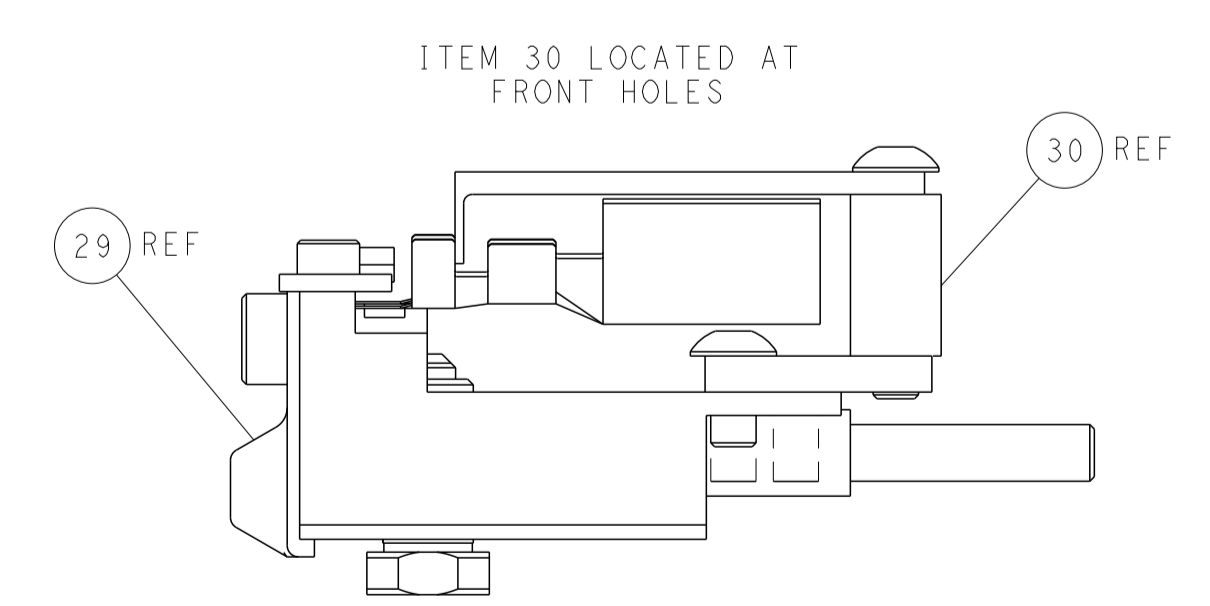
FEED SPRING SETTING POSITION (SHOWN FROM REAR SIDE)



TERMINAL SUPPORT LOCATION

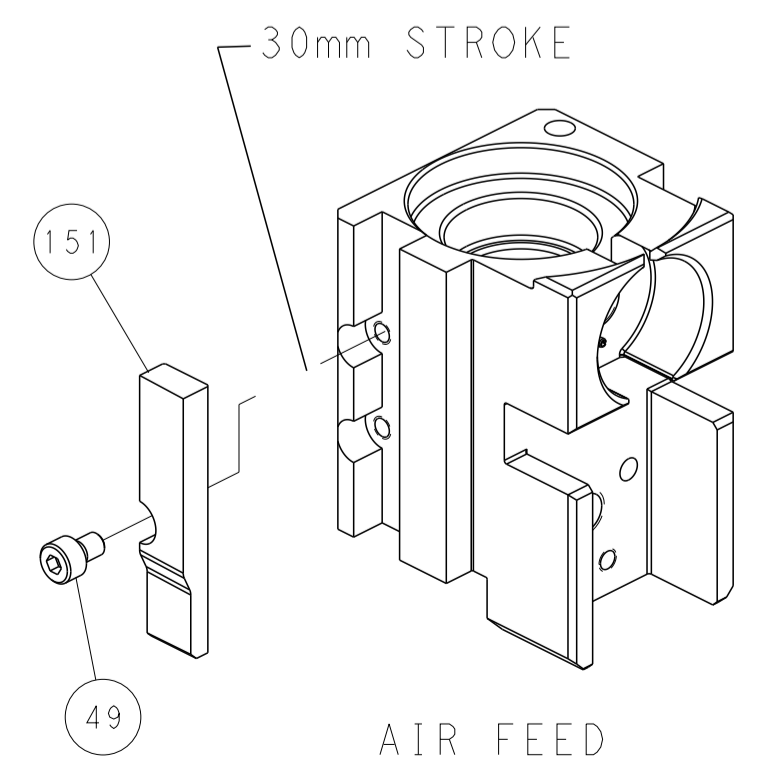


RAM SET-UP



FEED TRACK POSITION GUIDE BY INSULATION BARREL

CAM POSITION



AIR FEED

PACIFIC VERSION
 Shown on sheets 3 of 4 & 4 of 4
 (Atlantic version shown on sheets 1 of 4 & 2 of 4)

<small>THIS DRAWING IS UNPUBLISHED. RELEASED FOR PUBLICATION. ALL RIGHTS RESERVED. THIS DRAWING IS THE PROPERTY OF TYCO ELECTRONICS CORPORATION. IT IS TO BE USED ONLY FOR THE PURPOSES SPECIFIED AND IS NOT TO BE REPRODUCED OR TRANSMITTED IN ANY FORM OR BY ANY MEANS, ELECTRONIC OR MECHANICAL, WITHOUT PERMISSION IN WRITING FROM TYCO ELECTRONICS CORPORATION.</small>		DWN: K. STAKEM 06AUG2014 CHK: G. BAILEY 06AUG2014 APVD: T. ELBIN 06AUG2014	NAME: TE Connectivity Harrisburg, PA 17105-3608
DIMENSIONS: mm TOLERANCES UNLESS OTHERWISE SPECIFIED: 0 PLC ± 1 PLC ± 2 PLC ± 3 PLC ± 4 PLC ± ANGLES ± MATERIAL: - FINISH: -	PRODUCT SPEC: APPLICATION SPEC: WEIGHT: - SCALE: 1:2	SIZE: A1 CAGE CODE: 00779 DRAWING NO: C=2266457 RESTRICTED TO: -	SHEET 4 OF 4 REV J1