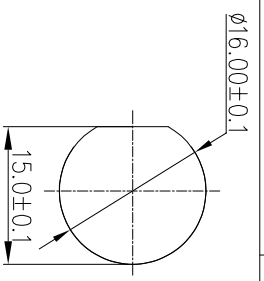
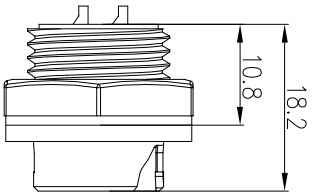


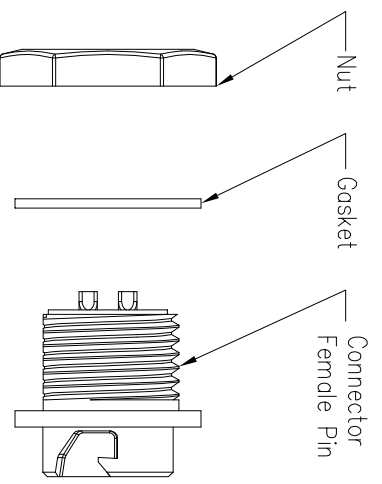
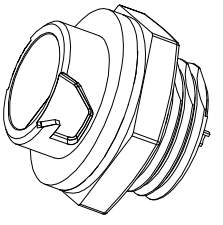
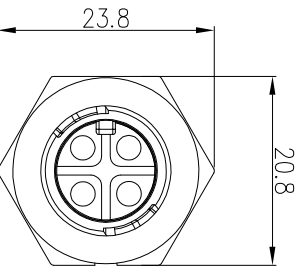
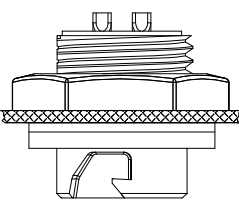
| REV. | EN. NO. | DESCRIPTION     | SIGN | DATE       |
|------|---------|-----------------|------|------------|
| C1   | N/A     | INITIAL DRAWING | Liu  | 2019/08/13 |



Recommended Panel Cut-Out



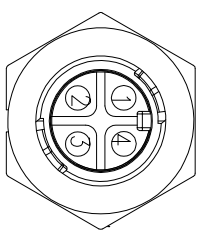
Panel T: Max 3.0



- Specification:
1. Operation Temperature:  $-45^{\circ}\text{C} \sim 105^{\circ}\text{C}$ .
  2. Insulation Resistance:  $100\text{M}\Omega$  at DC500V.
  3. Contact Resistance:  $<10\text{m}\Omega$ .
  4. Withstand Voltage: 1500V AC
  5. Operating Current: 10A
  6. Operating Voltage: AC 125V
  7. Waterproof Rate: IP67 (Mated)
  8. Housing: Nylon, Black
  9. Female Pin: Copper Alloy, Gold Plated
  10. Gasket: Silicon Gray
  11. Panel Nut: Nylon, Blue
  12. Torque Rate:  $0.8 \sim 1.0\text{N} \cdot \text{m}$
  13. RoHS Compliant.
  14. UL Compliant.
  15. Mating Cap P/N: 806-00053-01

22XXXX635-03

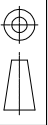
Pin Number



4 Pin

P/N: 22004635-03

Pin Assignments  
Front View



|           |                 |
|-----------|-----------------|
| TOLERANCE |                 |
| .X        | $\pm 0.25$      |
| .XX       | $\pm 0.15$      |
| .XXX      | $\pm 0.05$      |
| ANGLES    | $\pm 1^{\circ}$ |

DESCRIPTION

Standard Series Push Lock  
Rear Mount With Female Pin

|                     |     |       |        |
|---------------------|-----|-------|--------|
| SCALE               | 1:1 | SHEET | 1 OF 1 |
| REV                 | C1  | SIZE  | A4     |
| * : Inspection Item |     |       |        |

**CHOGORI**

PART NO 22XXXX635-03

DRAWN BY Liu

DATE 2019/08/13

DWG NO

CHECKED BY Mo

DATE 2019/08/13

CUSTOMER

APPROVED BY Ponsoon

DATE 2019/08/13