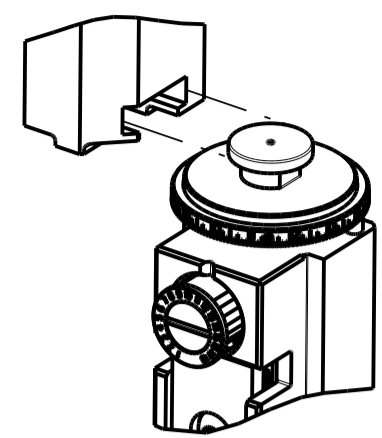


PART NUMBER	REVISION	DESCRIPTION	FEED TYPE
2151036-1	L	FINE CRIMP HEIGHT ADJUST	MECHANICAL
2151036-2	L	FINE CRIMP HEIGHT ADJUST	PNEUMATIC
3-2151036-2	L	FINE CRIMP HEIGHT ADJUST	DOUBLE ACTING PNEUMATIC WITH SENSORS
5-2151036-1	L	SEAL STRIPPER CRIMPER TERMINATING UNIT	MECHANICAL
5-2151036-2	L	SEAL STRIPPER CRIMPER TERMINATING UNIT	PNEUMATIC
7-2151036-1	L	MECHANICAL AND CRIMP TOOLING KIT	MECHANICAL
7-2151036-2	L	PNEUMATIC AND CRIMP TOOLING KIT	PNEUMATIC
7-2151036-7	A	CRIMP TOOLING KIT	-

ATLANTIC VERSION TERMINATOR INTERFACE ADAPTER



APPLICATOR DATA		
CRIMP	SIZE	TYPE
WIRE	1.40 mm [.055]	F
INSUL	3.18 mm [.125]	O

APPLICATOR INSTRUCTIONS 408-35042

TERMINAL DATA: TE TERMINAL		TE CRIMP SPECIFICATION	
TERMINAL NAME: MCP 1.2 WITH LOCKING LANCE			
WIRE STRIP LENGTH	INSULATION DIAMETER RANGE		
3.30-3.90 mm [.130-.154 IN]	Ø1.40-1.90 mm [.055-.075 IN]		
TERMINAL APPLICATION SPECIFICATION	114-18464		

TERMINALS APPLIED				
TE TERMINAL	TE TERMINAL	TE SEAL	TE SEAL	CABLE DIAMETER
1452668-1	1718033-3		967067-1	1.4-2.1
1452668-2			963142-2	0.9-1.3
1452668-3			963142-3	1.4-2.4

WIRE SIZE	CRIMP HEIGHT mm [INCH]	CRIMP HEIGHT REFERENCE SETTING
0.75mm2	1.05+/-0.03 [.041+/-0.001]	6.7
20 AWG OR 0.50mm2	0.93+/-0.03 [.037+/-0.001]	8.0



- RECOMMENDED SPARE PARTS
- REFER TO SUPPLIED INSTRUCTION SHEET FOR CLEANING, LUBRICATION AND STORAGE OF APPLICATOR.
- APPLY PART NUMBER 1-23419-5 LOCTITE TO THREADS OF ITEMS 180. APPLY PART NUMBER 2-23419-6 LOCTITE TO THREADS OF ITEM 242.
- CRIMP HEIGHT REFERENCE SETTING WAS THE SETTING USED WHEN THE APPLICATOR WAS QUALIFIED AT THE FACTORY. ADJUSTMENT MAY BE NECESSARY WHEN RUNNING APPLICATOR IN THE FIELD.
- APPLY TORO-SEAL IN ALLEN SOCKET TO FILL HOLE AFTER FLAT HD HAS BEEN ADJUSTED TO CORRECT HEIGHT AT QUALIFICATION. APPLY #1-23419-5 LOC-TITE TO THREADS.
- THIS APPLICATOR IS EQUIPPED WITH THE DOUBLE ACTING FEED WITH SENSORS AND IS APPLICATION SPECIFIC AND DOES NOT REQUIRE ITEMS 49 & 248.
- TERMINAL LUBRICANT IS RECOMMENDED.
- UNLESS SPECIFIED OTHERWISE TORQUE VALUES SHALL BE USED PER DOCUMENT, 101-35000.

TERMINAL DATA: TE TERMINAL		TE CRIMP SPECIFICATION	
TERMINAL NAME: MCP 1.2 WITH LOCKING LANCE			
WIRE STRIP LENGTH	INSULATION DIAMETER RANGE		
3.30-3.90 mm [.130-.154 IN]	Ø1.40-1.90 mm [.055-.075 IN]		
TERMINAL APPLICATION SPECIFICATION	114-18464		

TERMINALS APPLIED				
TE TERMINAL	TE TERMINAL	TE SEAL	TE SEAL	CABLE DIAMETER
7-1452668-1			967067-1	1.4-2.1
7-1452668-2			963142-2	0.9-1.3
7-1452668-3			963142-3	1.4-2.4

WIRE SIZE	CRIMP HEIGHT mm [INCH]	CRIMP HEIGHT REFERENCE SETTING
0.75mm2	0.98+/-0.03 [.039+/-0.001]	7.1
20 AWG OR 0.50mm2	0.93+/-0.03 [.037+/-0.001]	8.0

***WARNING**
ON INSTALLATION, SET WIRE DISC TO CRIMP HEIGHT REFERENCE SETTING FOR LARGEST WIRE SIZE. CRIMP HEIGHT REFERENCE SETTINGS GREATER THAN THE VALUE SHOWN MAY CAUSE DAMAGE TO THE CRIMP TOOLING, REFER TO THE INSTRUCTION SHEET FOR PROPER SETUP AND ADJUSTMENTS.

LOC	DIST	REV	DATE	BY	CHK
A	66	J1	05NOV2018	YY	TE
		K	28MAR2019	LG	TE
		L	02JUN2020	JAH	RK
		L1	19JAN2021	FJ	YY

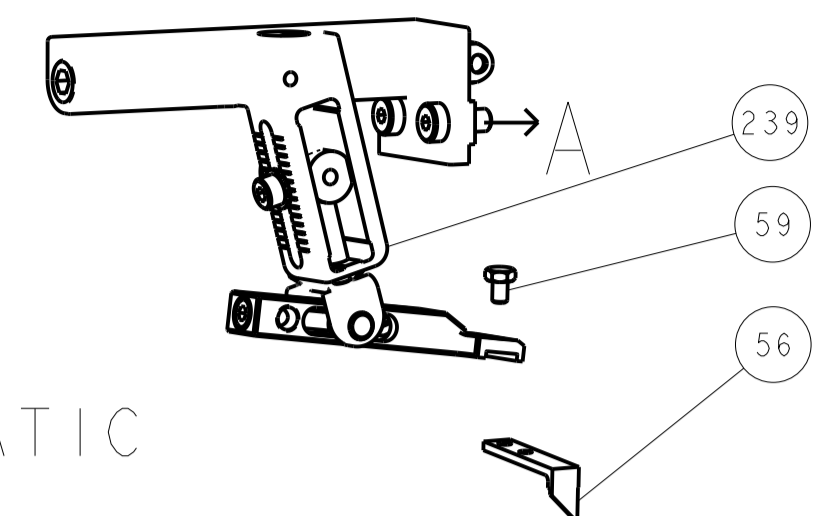
ITEM NO	DESCRIPTION	ITEM NO
293	RAM ASSEMBLY, SF ATLANTIC	
292	APPLICATOR BASIC ASSEMBLY, SF	
290	AIR FEED MODULE	
248	FEED CAM, AIR FEED	
244	CAM, SNAIL, INSULATION ADJUSTMENT	
243	WASHER, WAVE SPRING, CREST-TO-CREST	
242	RETAINER, INSULATION DIAL	
241	SCR, SKT HD CAP M3 X 4.0	
239	MECHANICAL FEED ASSEMBLY	
238	AIR FEED MODULE	
182	STRIPPER, SIDE FEED	
181	NUT, HEX, REG, RoHS, M3.5	
180	STANDOFF, HOLD-DOWN	
177	PIN, SLOTTED SPRING 3.0 X 20.0	
176	SPRING, COMPRESSION	
175	GUIDE PIN, HOLDDOWN	
174	GUIDE PIN, HOLDDOWN	
164	COUNTER, MAGNETIC	
113	ASSY, LUBRICATOR, SIDE FEED	
99	SCREW, LOCKING	
98	POST, LOCKING	
82	SPACER, CRIMPER	
79	SCR, SKT HD CAP, RoHS, M3 X 8.0	
78	FENCE	
71	DOCUMENTATION PACKAGE	
67	TAG, IDENTIFICATION	
66	SCREW, DRIVE, RH, RoHS, 2 x .188	
60	SCR, SKT HD CAP, RoHS, M4 X 8.0	
59	SCR, HEX HD CAP, M4 X 6.0	
57	SCR, FLT SKT HD CAP M3 X 12.0	
56	PAWL, FEED	
54	SCR, SKT HD CAP, RoHS, M4 X 12.0	
53	SCR, SKT HD CAP, RoHS, M4 X 12.0	
50	HOLD DOWN, SPRING LOADED	
49	SCR, SKT HD CAP M4 X 6.0	
48	FEED CAM, PRE FEED	
47	FEED CAM, POST FEED	
46	APPLICATOR BASIC ASSEMBLY, SF	
44	RAM ASSEMBLY, SF ATLANTIC	
41	SCR, BHSC, RoHS (M8 X 25)	
34	SUPPORT, TERMINAL	
33	SCR, BHSC, RoHS (M4 X 20)	
30	SPACER, CYLINDRICAL, STRIP GUIDE	
29	ASSEMBLY, STRIP GUIDE	
28	SPACER, CRIMPER	
24	STRIP GUIDE	
21	SCR, SKT HD CAP, RoHS, M4 X 8.0	
20	WASHER, FLAT, REG M4	
19	STRIPPER, SIDE FEED	
13	INSERT, SHEAR	
12	SPRING, COMPRESSION	
11	STOP, SHEAR	
10	SHEAR HOLDER, FRONT	
9	FLOATING SHEAR, FRONT	
8	ANVIL, COMBINATION	
7	SPACER	
5	DEPRESSOR, SHEAR	
4	BLOCK, CRIMPER SPACER	
3	CRIMPER, INSULATION O PREMIUM	
2	SPACER, CRIMPER	
1	CRIMPER, WIRE PREMIUM	

ATLANTIC VERSION
Shown on sheets 1 of 4 & 2 of 4
(Pacific version shown on sheets 3 of 4 & 4 of 4)

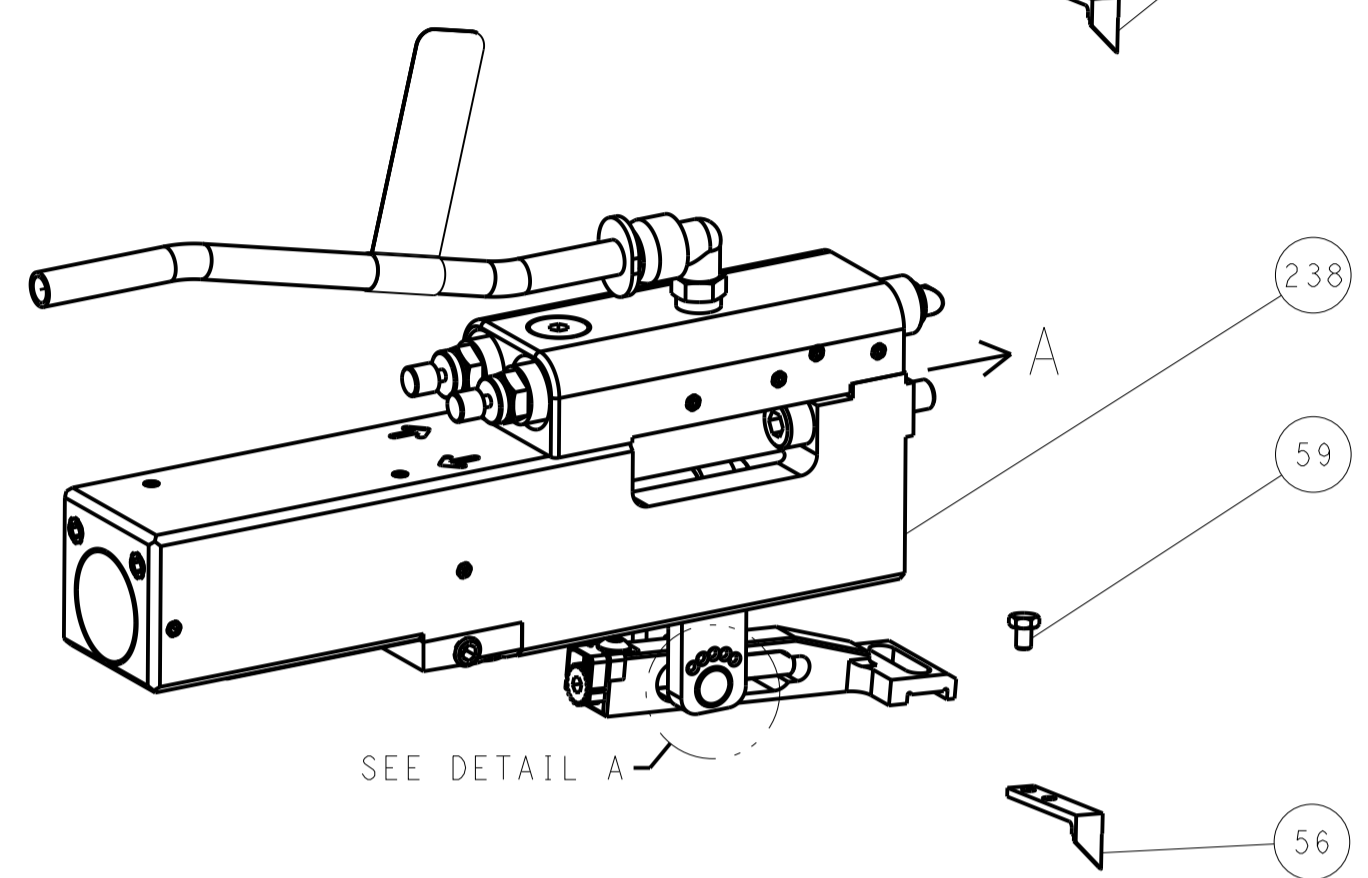
DIMENSIONS: mm 	TOLERANCES UNLESS OTHERWISE SPECIFIED: 0 PLC ± 1 PLC ± 2 PLC ± 3 PLC ± 4 PLC ± ANGLES ±	DWG: H. HUANG 02SEP2011 CHK: S. XI 02SEP2011 APVD: S. XI 02SEP2011 PRODUCT SPEC APPLICATION SPEC WEIGHT: - SCALE: 1:2 SHEET: 1 OF 4 REV: 1	TE Connectivity Harrisburg, PA 17105-3608 Ocean Side Feed Applicator SIZE: A1 CAGE CODE: 00779 DRAWING NO: C=2151036 RESTRICTED TO: - Customer Accessible Production Drawing
-----------------------	---	--	--

LOC	DIST	REV	DATE	BY	APPV
A	66				

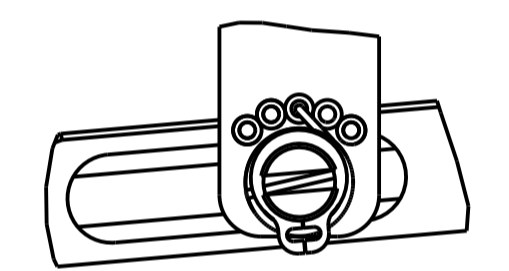
FEED TYPE MECHANICAL



PNEUMATIC

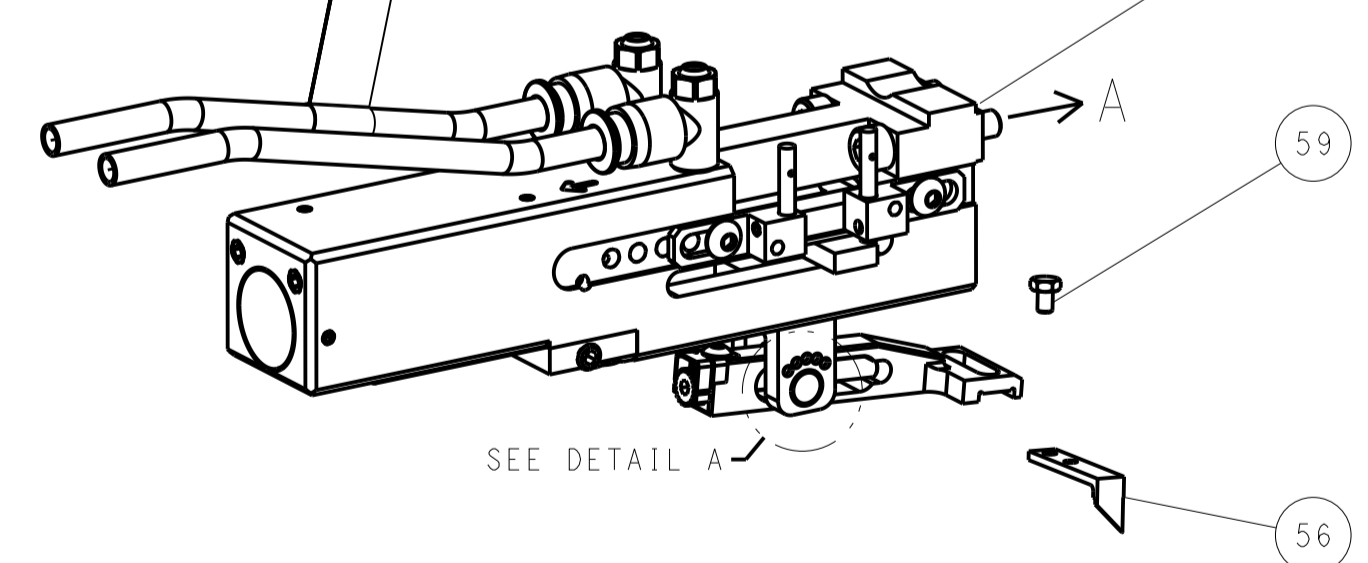


FEED SPRING SETTING POSITION (SHOWN FROM REAR SIDE)

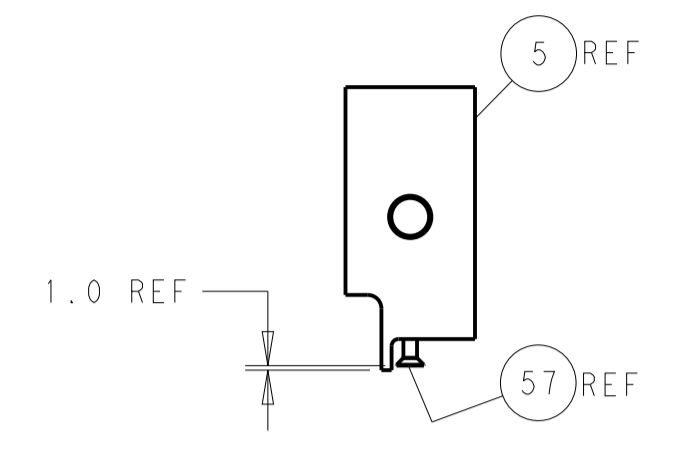
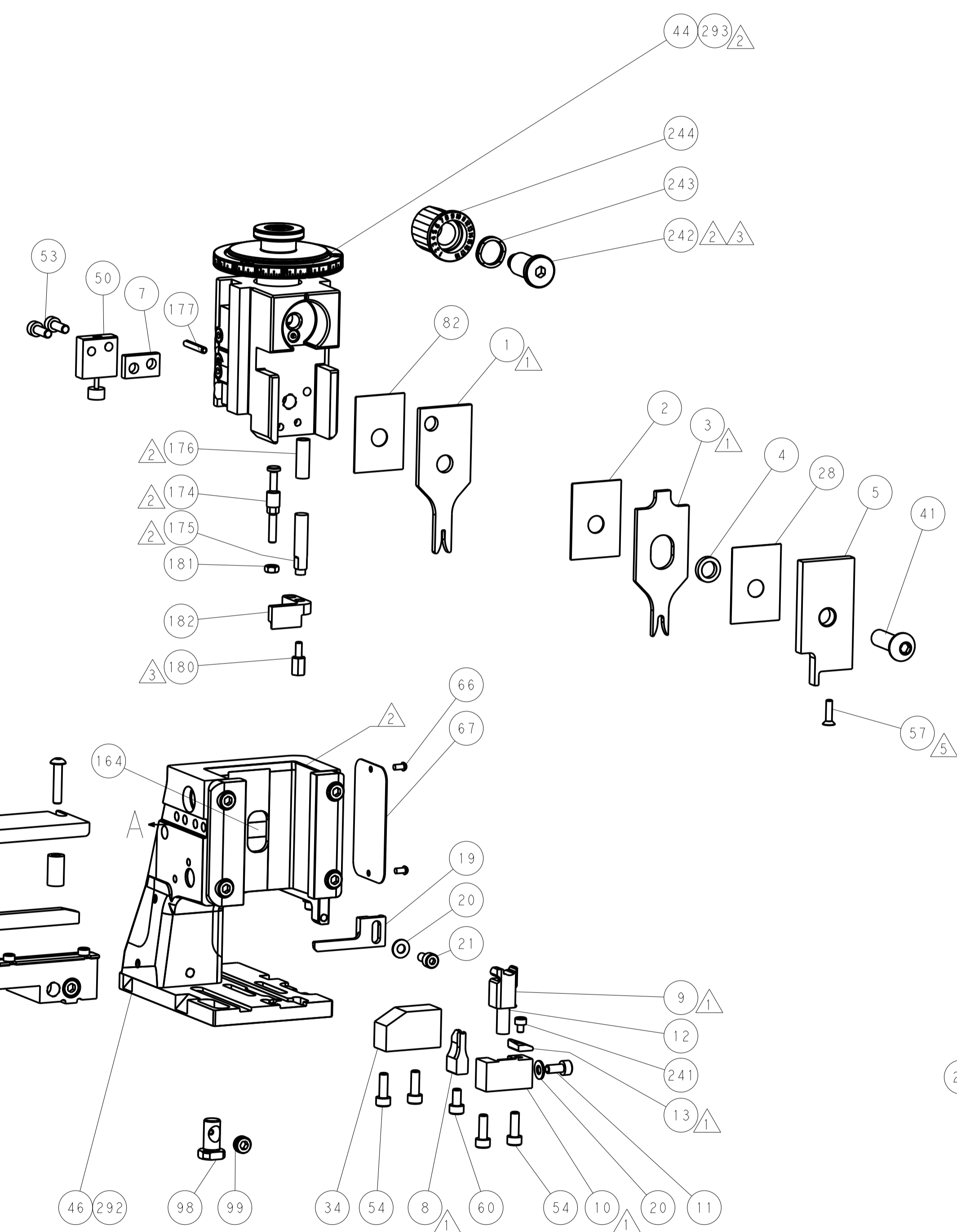
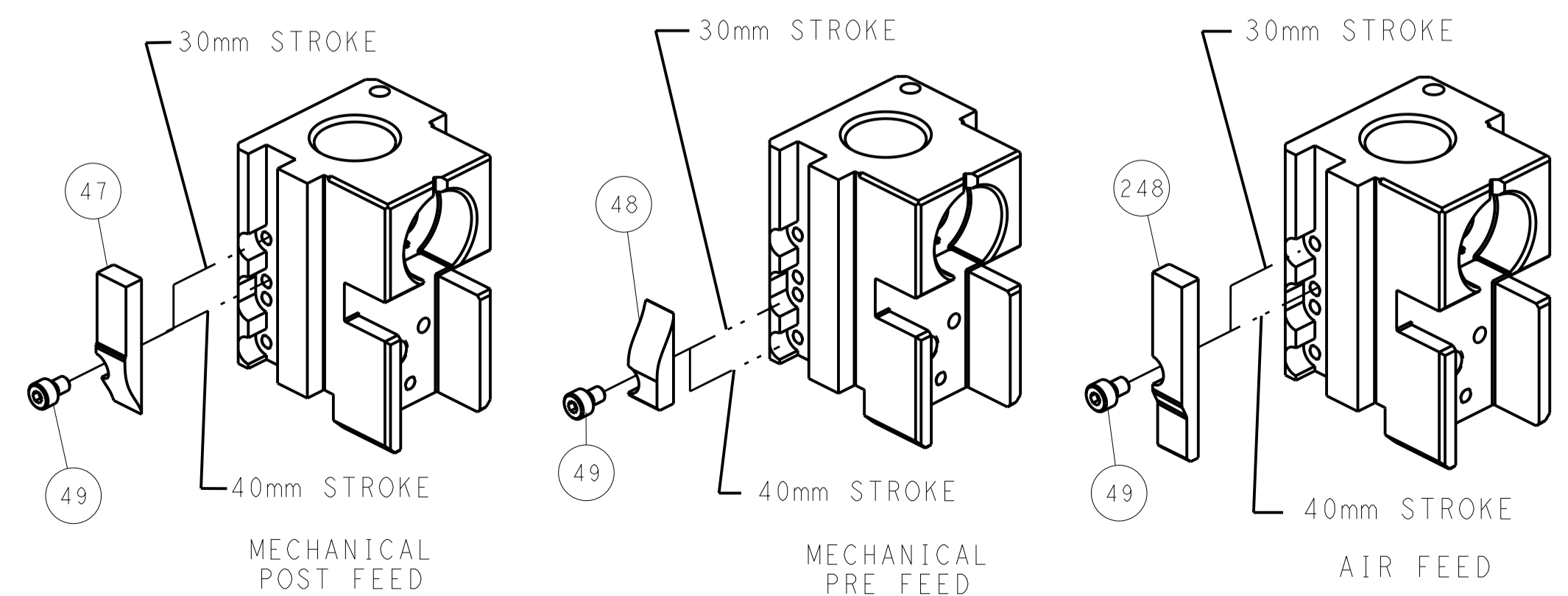


DETAIL A

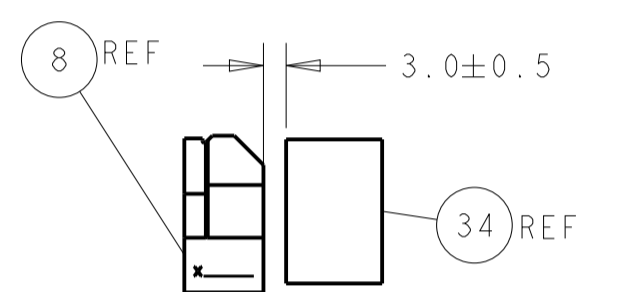
DOUBLE ACTING PNEUMATIC WITH SENSORS



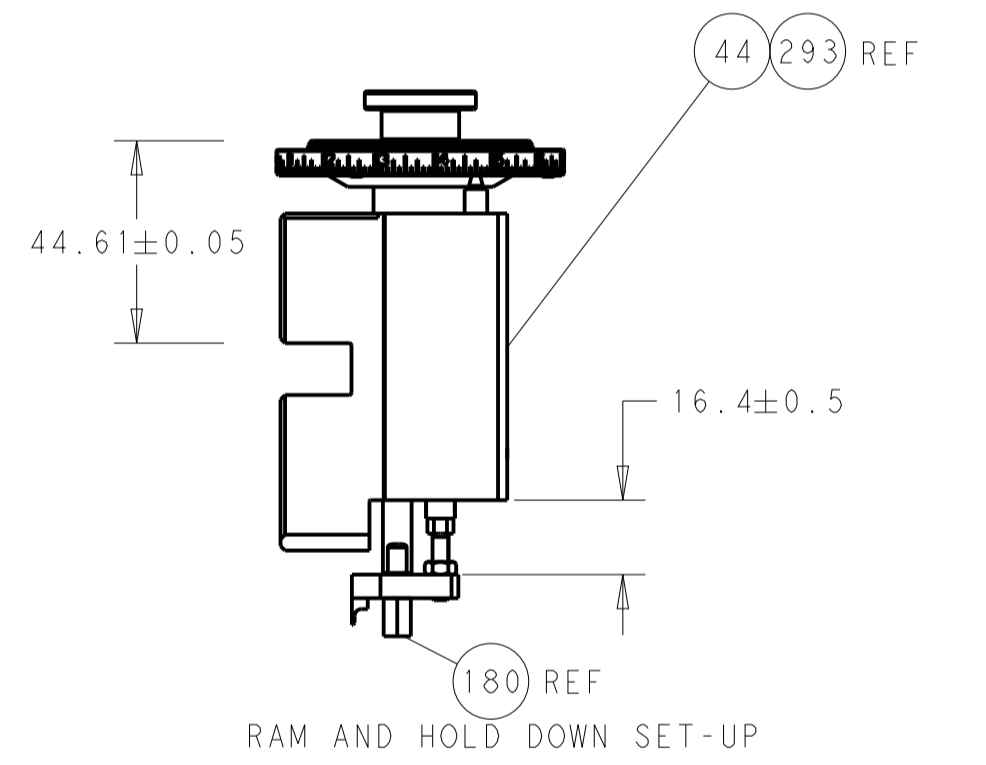
CAM POSITIONS



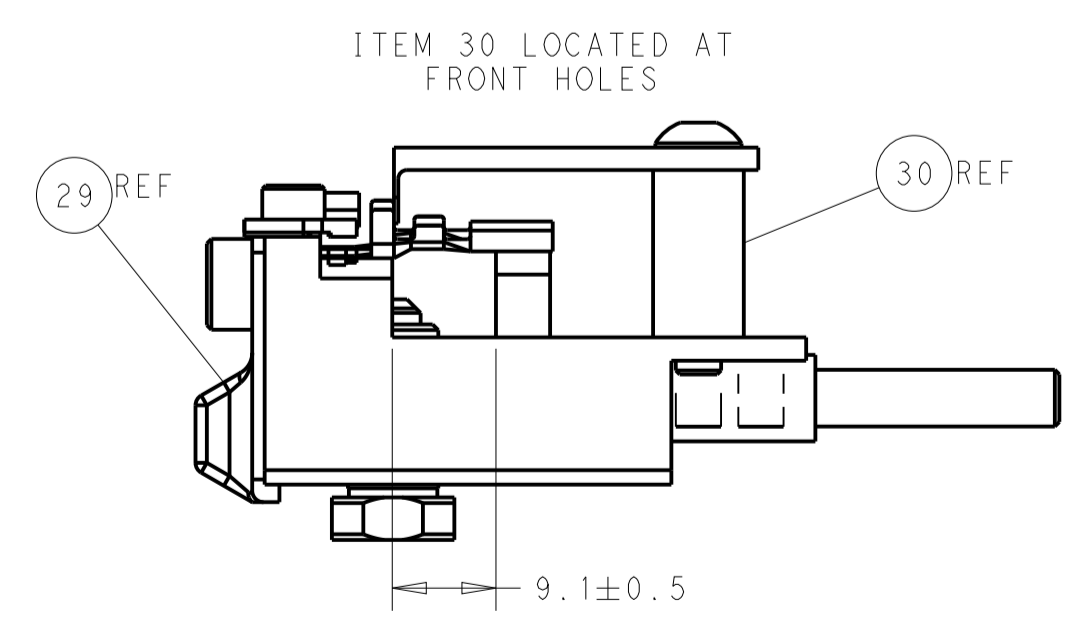
SHEAR DEPRESSOR DETAIL



TERMINAL SUPPORT LOCATION



RAM AND HOLD DOWN SET-UP



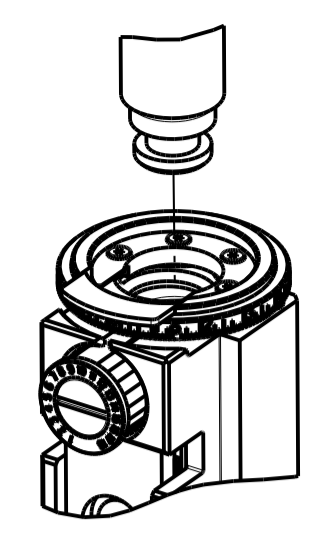
FEED TRACK POSITION GUIDE BY INSULATION BARREL

ATLANTIC VERSION
 Shown on sheets 1 of 4 & 2 of 4
 (Pacific version shown on sheets 3 of 4 & 4 of 4)

DIMENSIONS:		TOLERANCES UNLESS OTHERWISE SPECIFIED:		DWG: R. HUANG 02SEP2011		TE Connectivity	
mm	0 PLC ±	1 PLC ±	2 PLC ±	3 PLC ±	4 PLC ±	Harrisburg, PA 17105-3608	
MATERIAL:		FINISH:		CHK: S. XI 02SEP2011		NAME: Ocean Side Feed Applicator	
				PRODUCT SPEC:		SIZE: CAGE CODE: DRAWING NO:	
				APPLICATION SPEC:		A1 00779 ©=2151036	
				WEIGHT:		RESTRICTED TO:	
				Customer Accessible Production Drawing		SCALE: 1:2 SHEET 2 OF 4 REV: 1	

PART NUMBER	REVISION	DESCRIPTION	FEED TYPE
2-2151036-1	L	FINE CRIMP HEIGHT ADJUST	MECHANICAL
2-2151036-2	L	FINE CRIMP HEIGHT ADJUST	PNEUMATIC
4-2151036-2	L	FINE CRIMP HEIGHT ADJUST	DOUBLE ACTING PNEUMATIC WITH SENSORS
7-2151036-7	A	CRIMP TOOLING KIT	-

PACIFIC VERSION TERMINATOR INTERFACE ADAPTER



APPLICATOR DATA

CRIMP	SIZE	TYPE
WIRE	1.40 mm [.055]	F
INSUL	3.18 mm [.125]	O

APPLICATOR INSTRUCTIONS
408-35042

TERMINAL DATA: TE TERMINAL TE CRIMP SPECIFICATION

TERMINAL NAME: MCP 1.2 WITH LOCKING LANCE

WIRE STRIP LENGTH	INSULATION DIAMETER RANGE
3.30-3.90 mm [.130-.154 IN]	Ø1.40-1.90 mm [.055-.075 IN]

TERMINAL APPLICATION SPECIFICATION 114-18464

TERMINALS APPLIED

TE TERMINAL	TE TERMINAL	TE SEAL	TE SEAL	CABLE DIAMETER
1452668-1	1718033-3		967067-1	1.4-2.1
1452668-2		963142-2		0.9-1.3
1452668-3		963142-3		1.4-2.4

TERMINAL DATA: TE TERMINAL TE CRIMP SPECIFICATION

TERMINAL NAME: MCP 1.2 WITH LOCKING LANCE

WIRE STRIP LENGTH	INSULATION DIAMETER RANGE
3.30-3.90 mm [.130-.154 IN]	Ø1.40-1.90 mm [.055-.075 IN]

TERMINAL APPLICATION SPECIFICATION 114-18464

TERMINALS APPLIED

TE TERMINAL	TE TERMINAL	TE SEAL	TE SEAL	CABLE DIAMETER
7-1452668-1			967067-1	1.4-2.1
7-1452668-2		963142-2		0.9-1.3
7-1452668-3		963142-3		1.4-2.4

WIRE SIZE	CRIMP HEIGHT mm [INCH]	CRIMP HEIGHT REFERENCE SETTING
0.75mm2	1.05+/-0.03 [.041+/-0.001]	6.7
20 AWG OR 0.50mm2	0.93+/-0.03 [.037+/-0.001]	8.0

WIRE SIZE	CRIMP HEIGHT mm [INCH]	CRIMP HEIGHT REFERENCE SETTING
0.75mm2	0.98+/-0.03 [.039+/-0.001]	7.1
20 AWG OR 0.50mm2	0.93+/-0.03 [.037+/-0.001]	8.0

- 1 RECOMMENDED SPARE PARTS
- 2 REFER TO SUPPLIED INSTRUCTION SHEET FOR CLEANING, LUBRICATION AND STORAGE OF APPLICATOR.
- 3 APPLY PART NUMBER 2-23419-6 LOCTITE TO THREADS OF ITEM 242.
- 4 CRIMP HEIGHT REFERENCE SETTING WAS THE SETTING USED WHEN THE APPLICATOR WAS QUALIFIED AT THE FACTORY. ADJUSTMENT MAY BE NECESSARY WHEN RUNNING APPLICATOR IN THE FIELD.
- 5 APPLY TORO-SEAL IN ALLEN SOCKET TO FILL HOLE AFTER FLAT HD HAS BEEN ADJUSTED TO CORRECT HEIGHT AT QUALIFICATION. APPLY #1-23419-5 LOC-TITE TO THREADS.
- 6 THIS APPLICATOR IS EQUIPPED WITH THE DOUBLE ACTING FEED WITH SENSORS AND IS APPLICATION SPECIFIC AND DOES NOT REQUIRE ITEMS 49 & 151.
- 7 TERMINAL LUBRICANT IS RECOMMENDED.
- 8 UNLESS SPECIFIED OTHERWISE TORQUE VALUES SHALL BE USED PER DOCUMENT, 101-35000.

***WARNING**
 ON INSTALLATION, SET WIRE DISC TO CRIMP HEIGHT REFERENCE SETTING FOR LARGEST WIRE SIZE. CRIMP HEIGHT REFERENCE SETTINGS GREATER THAN THE VALUE SHOWN MAY CAUSE DAMAGE TO THE CRIMP TOOLING, REFER TO THE INSTRUCTION SHEET FOR PROPER SETUP AND ADJUSTMENTS.

ENTRY LEVEL APPLICATOR		ITEM SUBSTITUTION LIST		
PART NUMBER	SAME AS	ITEM	ITEM DESCRIPTION	SUBSTITUTE PART NUMBER
8-2151036-1	2151036-1	1	WIRE CRIMPER	1-1803530-7
8-2151036-2	2151036-2	3	INSULATION CRIMPER	1803624-1
9-2151036-1	2-2151036-1	46	BASIC SUB -ASSEMBLY	1803940-9
9-2151036-2	2-2151036-2	141	BASIC SUB -ASSEMBLY LUBRICATOR	1-1803940-0 DELETE

PACIFIC VERSION
 Shown on sheets 3 of 4 & 4 of 4
 (Atlantic version shown on sheets 1 of 4 & 2 of 4)

LOC	DIST	REV	DATE	BY	APPV
A	66				

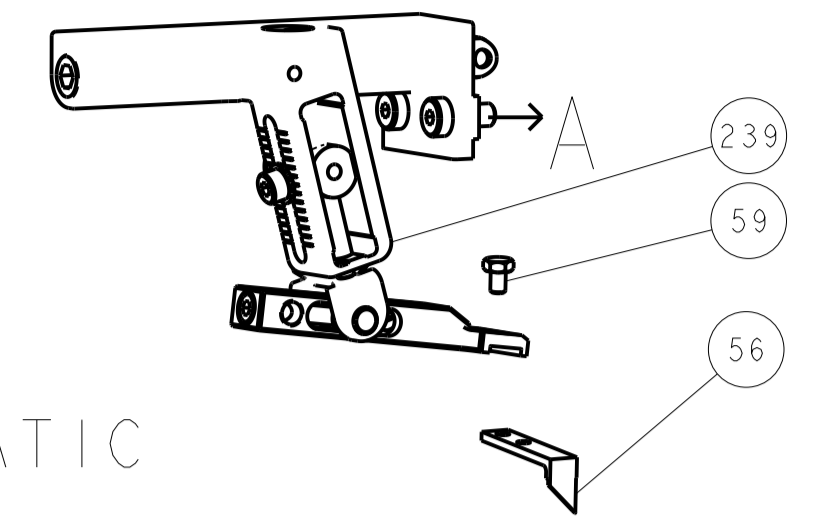
REV	DATE	BY	APPV	DESCRIPTION	ITEM NO
-	1	-	-	2844950-1 AIR FEED MODULE	290
-	1	1	1	2119082-4 CAM, SNAIL, INSULATION ADJUSTMENT	244
-	1	1	1	2079764-1 WASHER, WAVE SPRING, CREST-TO-CREST	243
3	-	1	1	2119083-1 RETAINER, INSULATION DIAL	242
-	1	1	1	7-18023-7 SCR, SKT HD CAP M3 X 4.0	241
-	-	-	-	2119580-1 MECHANICAL FEED ASSEMBLY	239
-	-	1	-	2844940-1 AIR FEED MODULE	238
-	REF	REF	REF	994970-2 COUNTER, MAGNETIC	164
-	-	1	-	2119641-2 FEED CAM, AIR FEED	151
-	1	1	1	2168083-8 SCR, SKT HD CAP, RoHS, M4 X 16	144
-	4	4	4	2168083-9 SCR, SKT HD CAP, RoHS, M4 X 20	143
-	-	-	-	2119653-2 FEED CAM, POST FEED	142
-	1	1	1	1-1803583-0 APPLICATOR BASIC ASSEMBLY, SF	141
-	1	1	1	1803516-1 RAM ASSEMBLY, SF PACIFIC	140
-	1	1	1	2119955-1 ASSY, LUBRICATOR, SIDE FEED	113
-	1	1	1	2844908-1 SCREW, LOCKING	99
-	1	1	1	2844907-1 POST, LOCKING	98
-	1	1	1	455888-5 SPACER, CRIMPER	82
-	2	2	2	2168083-1 SCR, SKT HD CAP, RoHS, M3 X 8.0	79
-	1	1	1	1633782-2 FENCE	78
-	1	1	1	1803607-3 DOCUMENTATION PACKAGE	71
-	1	1	1	2119740-1 TAG, IDENTIFICATION	67
-	2	2	2	2168078-1 SCREW, DRIVE, RH, RoHS, 2 x .188	66
-	1	1	1	5-18022-5 SCR, HEX HD CAP, M4 X 6.0	59
5	-	1	1	985575-4 SCR, FLT SKT HD CAP M3 X 12.0	57
-	1	1	1	1338685-1 PAWL, FEED	56
-	2	2	2	2168083-3 SCR, SKT HD CAP, RoHS, M4 X 12.0	53
-	1	1	1	1803382-6 HOLD DOWN, SPRING LOADED	50
-	-	1	2	18023-9 SCR, SKT HD CAP M4 X 6.0	49
-	-	-	-	2119652-1 FEED CAM, PRE FEED	48
-	1	1	1	1803602-1 SCR, BHSC, RoHS (M8 X 25)	41
-	1	1	1	1752356-6 SUPPORT, TERMINAL	34
-	2	2	2	2079383-5 SCR, BHSC, RoHS (M4 X 20)	33
-	2	2	2	2-2844962-8 SPACER, CYLINDRICAL, STRIP GUIDE	30
-	1	1	1	2844992-2 ASSEMBLY, STRIP GUIDE	29
-	1	1	1	455888-3 SPACER, CRIMPER	28
-	1	1	1	1320928-2 STRIP GUIDE	24
-	1	1	1	2168083-2 SCR, SKT HD CAP, RoHS, M4 X 8.0	21
-	2	2	2	1-18028-2 WASHER, FLAT, REG M4	20
-	1	1	1	2119533-1 STRIPPER, SIDE FEED	19
1	-	1	1	2119806-1 INSERT, SHEAR	13
-	1	1	1	3-22280-3 SPRING, COMPRESSION	12
-	1	1	1	1-356885-4 STOP, SHEAR	11
-	1	1	1	2119805-1 SHEAR HOLDER, FRONT	10
-	1	1	1	318707-1 FLOATING SHEAR, FRONT	9
1	1	1	1	6-1333201-7 ANVIL, COMBINATION	8
-	1	1	1	240641-1 SPACER	7
-	1	1	1	2119781-1 DEPRESSOR, SHEAR	5
-	1	1	1	238011-4 BLOCK, CRIMPER SPACER	4
1	1	1	1	1633965-1 CRIMPER, INSULATION O PREMIUM	3
-	1	1	1	455888-7 SPACER, CRIMPER	2
1	1	1	1	1-456402-7 CRIMPER, WIRE PREMIUM	1

DIMENSIONS: mm		TOLERANCES UNLESS OTHERWISE SPECIFIED:		DRAWN BY: H. HUANG 02SEP2011	
		0 PLC ± 1 PLC ± 2 PLC ± 3 PLC ± 4 PLC ± ANGLES ±		CHECKED BY: S. XI 02SEP2011 APVD BY: S. XI 02SEP2011 PRODUCT SPEC: - APPLICATION SPEC: -	
MATERIAL: -		FINISH: -		WEIGHT: - SCALE: 1:2 SHEET 3 OF 4 REV: 1	

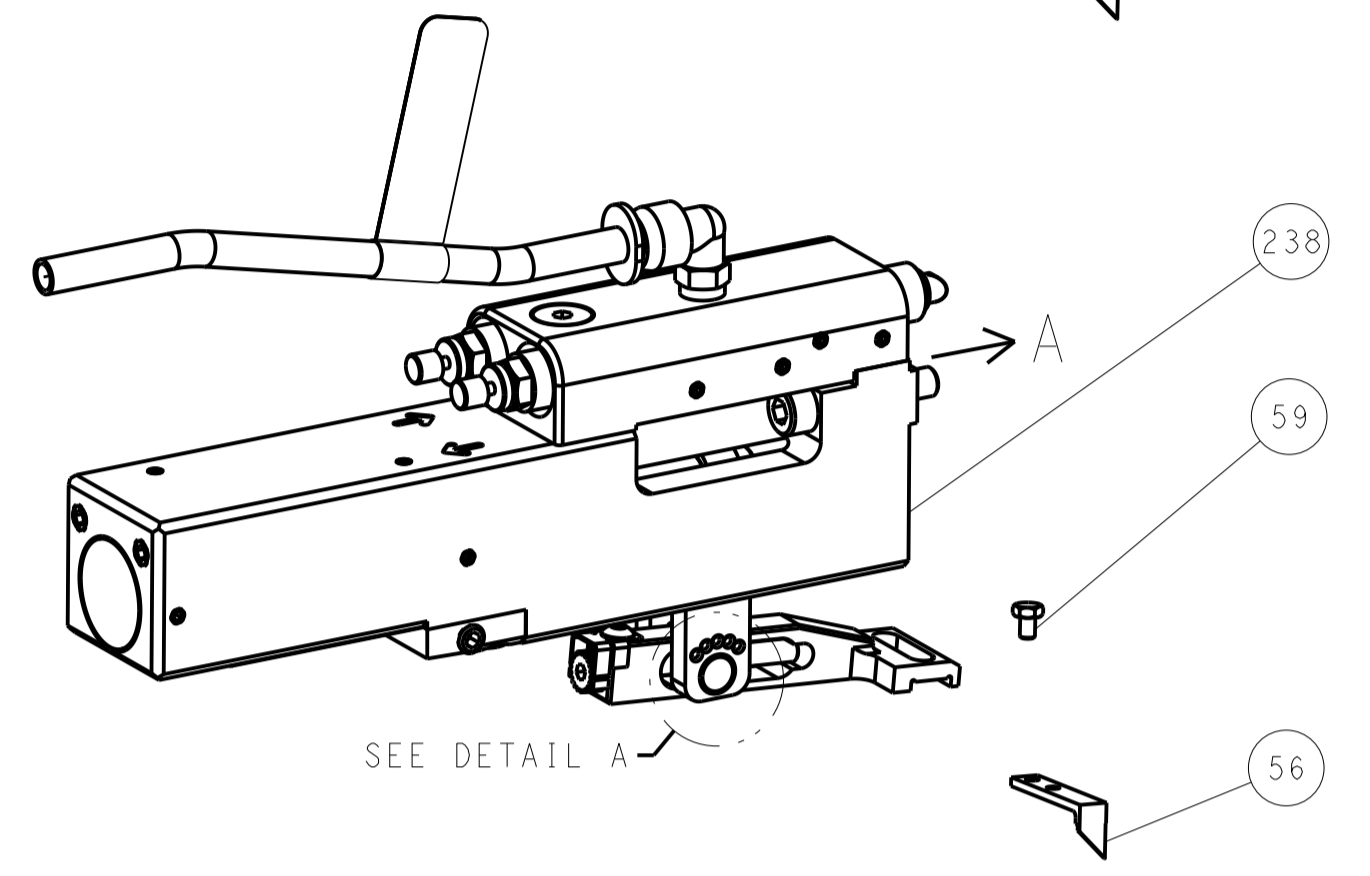
Customer Accessible Production Drawing

LOC	DIST	REV	DATE	BY	APPV
A	66				

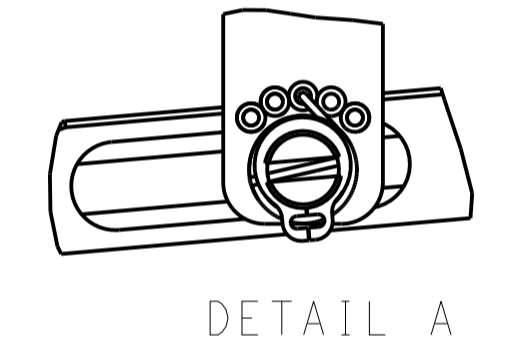
FEED TYPE MECHANICAL



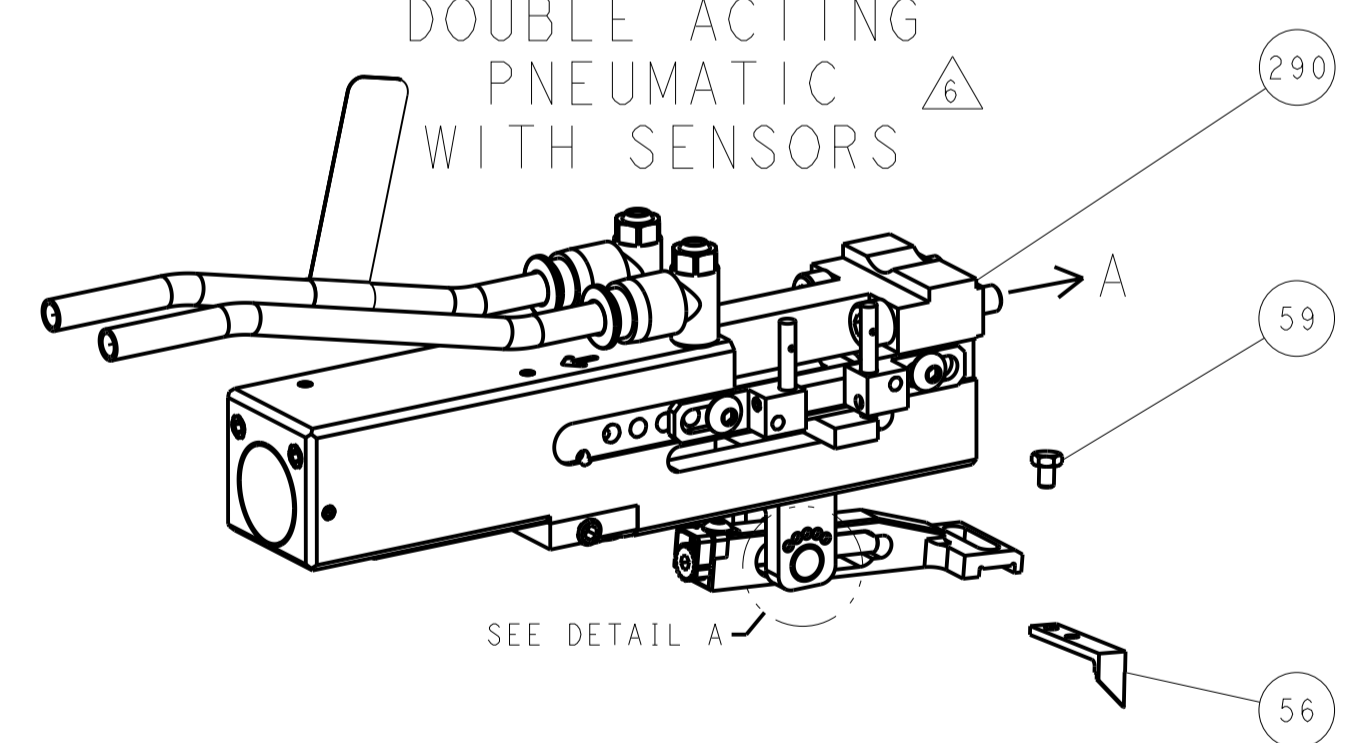
PNEUMATIC



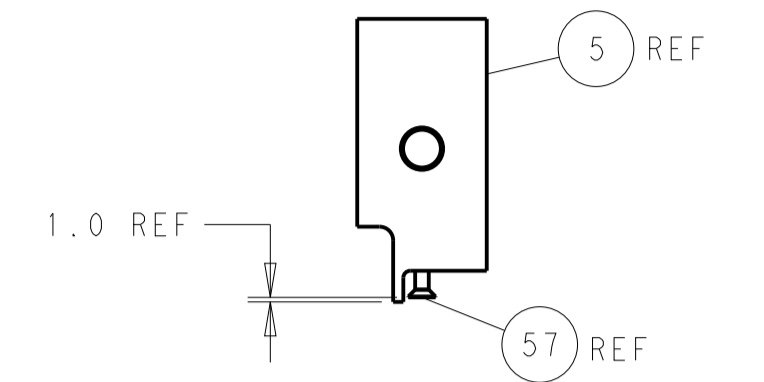
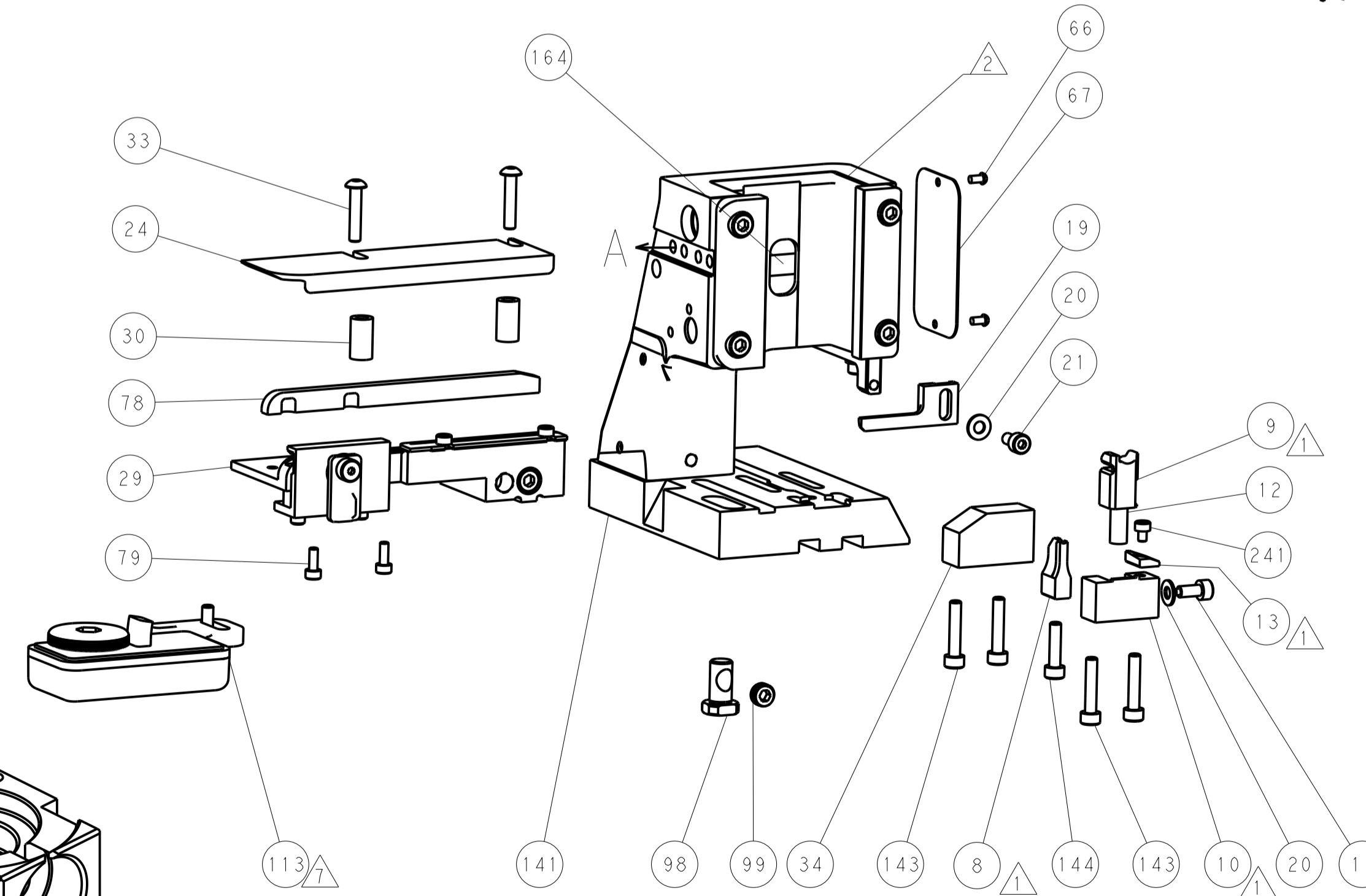
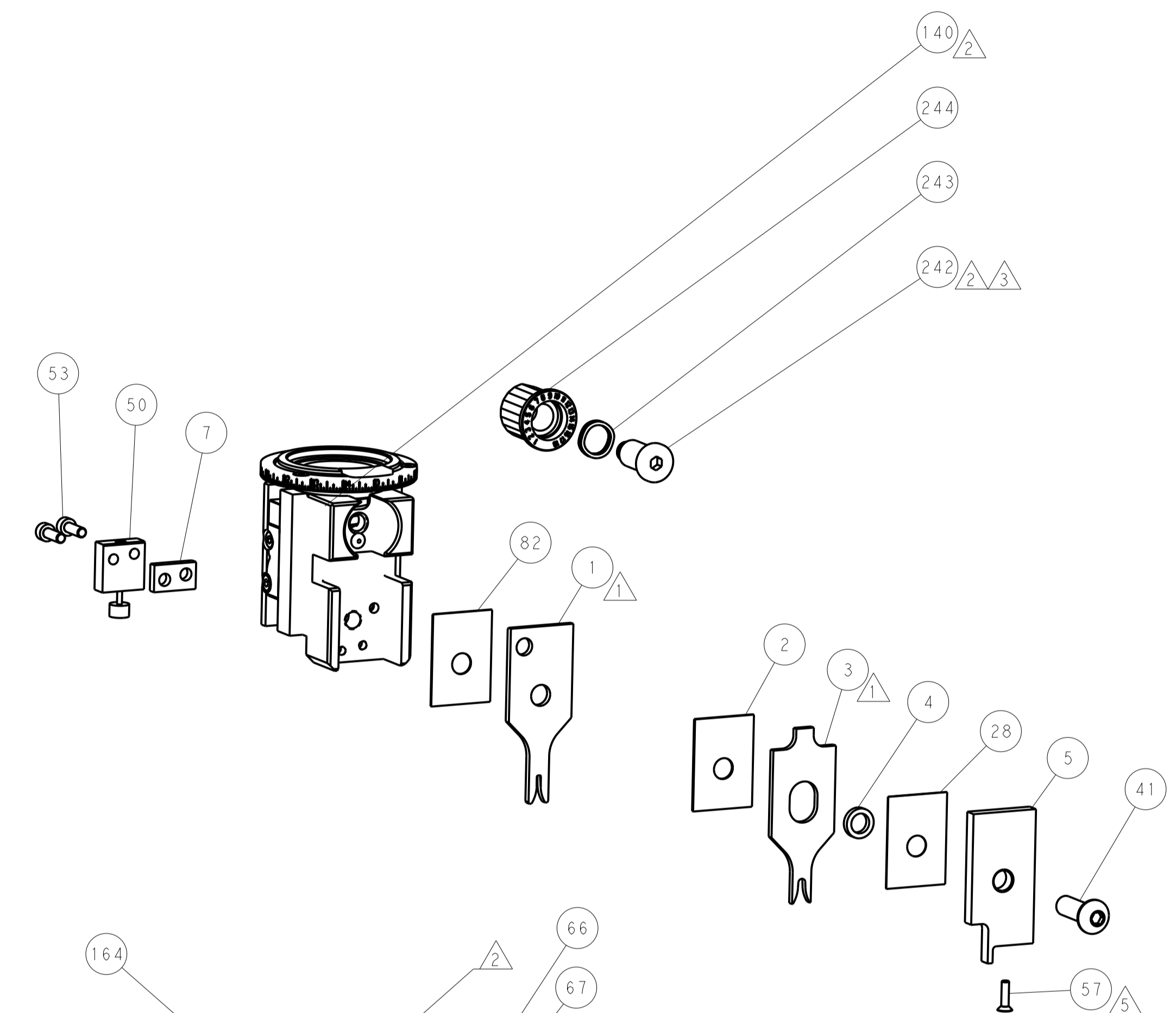
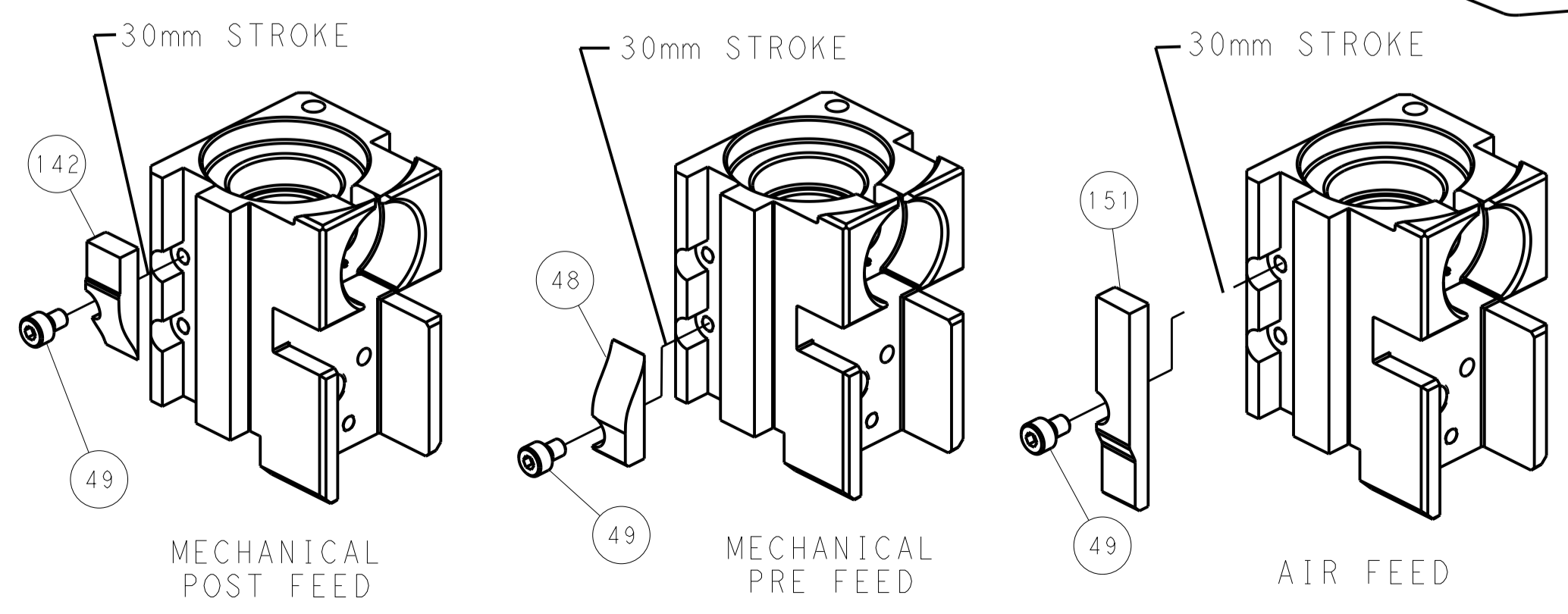
FEED SPRING SETTING POSITION (SHOWN FROM REAR SIDE)



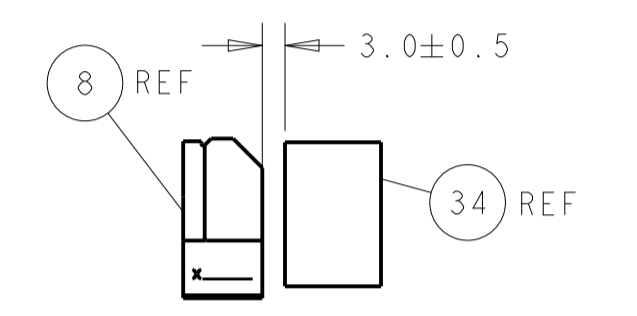
DOUBLE ACTING PNEUMATIC WITH SENSORS



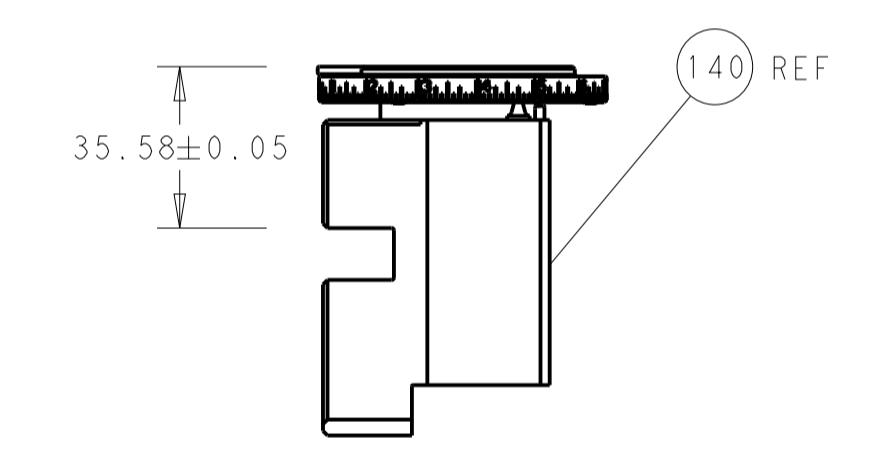
CAM POSITIONS



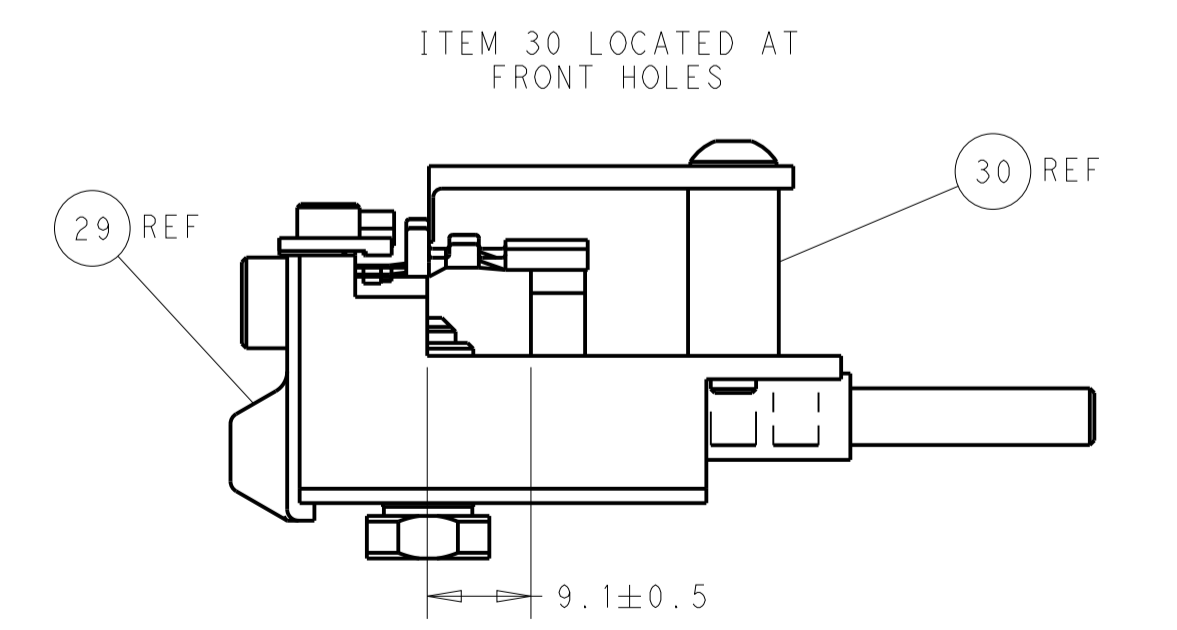
SHEAR DEPRESSOR DETAIL



TERMINAL SUPPORT LOCATION



RAM SET-UP



FEED TRACK POSITION GUIDE BY INSULATION BARREL

PACIFIC VERSION
 Shown on sheets 3 of 4 & 4 of 4
 (Atlantic version shown on sheets 1 of 4 & 2 of 4)

DIMENSIONS: mm 		TOLERANCES UNLESS OTHERWISE SPECIFIED: 0 PLC ± 1 PLC ± 2 PLC ± 3 PLC ± 4 PLC ± ANGLES ±		DWN: H. HUANG 02SEP2011 CHK: S. XI 02SEP2011 APVD: S. XI 02SEP2011 PRODUCT SPEC APPLICATION SPEC WEIGHT Customer Accessible Production Drawing		NAME: Ocean Side Feed Applicator SIZE: A1 CAGE CODE: 00779 DRAWING NO: 2151036 SCALE: 1:2 SHEET: 4 of 4 REV: 1	
--------------------	--	---	--	--	--	--	--