

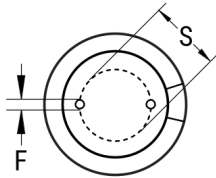
ESH158M025AL4AA

ESH, Aluminum Electrolytic, 1,500 uF, 20%, 25 VDC, -40/+105°C, Lead Spacing = 5mm

SIDE VIEW



TERMINAL END VIEW



Click [here](#) for the 3D model.

Dimensions	
D	13mm +/-0.5mm
L	25mm +2mm
S	5mm +/-0.5mm
LL Negative	15mm MIN
LL Positive	20mm MIN
F	0.6mm NOM

Packaging Specifications	
Packaging	Bulk, Bag
Packaging Quantity	1600

General Information

Series	ESH
Dielectric	Aluminum Electrolytic
Description	High CV Single Ended Aluminum Electrolytic
Features	High CV
RoHS	Yes
Lead	Wire Leads
AEC-Q200	No

Specifications

Capacitance	1,500 uF
Capacitance Tolerance	20%
Voltage DC	25 VDC, 32 VDC (Surge)
Temperature Range	-40/+105°C
Rated Temperature	105°C
Life	2000 Hrs
Dissipation Factor	16%
Ripple Current	1020 mAmps (120Hz 105C)
Leakage Current	375 uA (2min 20°C)
Impedance Ratio at -25C	2
Impedance Ratio at -40C	3