

Squba 1.80 and 3.60mm-Pitch Sealed Wire-To-Wire Connector System

molex

Squba 1.80 and 3.60mm-Pitch Sealed Wire-to-Wire Connector Systems are designs that offer an IP67-seal rating and carry up to 14.0A of current to deliver reliable power in a wide range of space-constrained applications

Features and Advantages

Protected, low-profile positive latch

Prevents wire from getting caught on latch and damaging it. Minimizes latch size to prevent latch from adding to connector's package size

Sealed components with proven performance

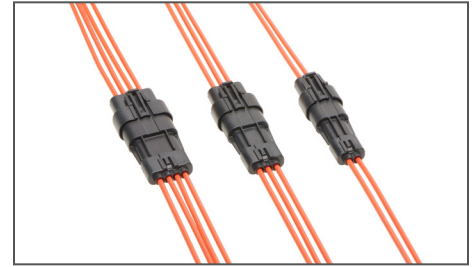
Delivers an IP67-sealed rating. Prevents ingress of dust and water to ensure reliable connection

Seal caps

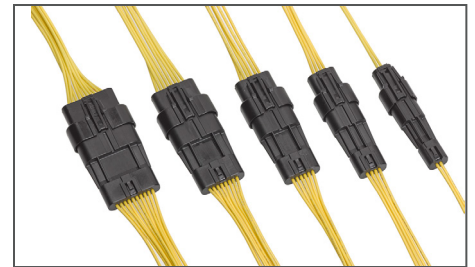
Protect seals from damage during shipping, handling and use. Align terminals to prevent seal from being punctured during assembly

Clean-body terminals

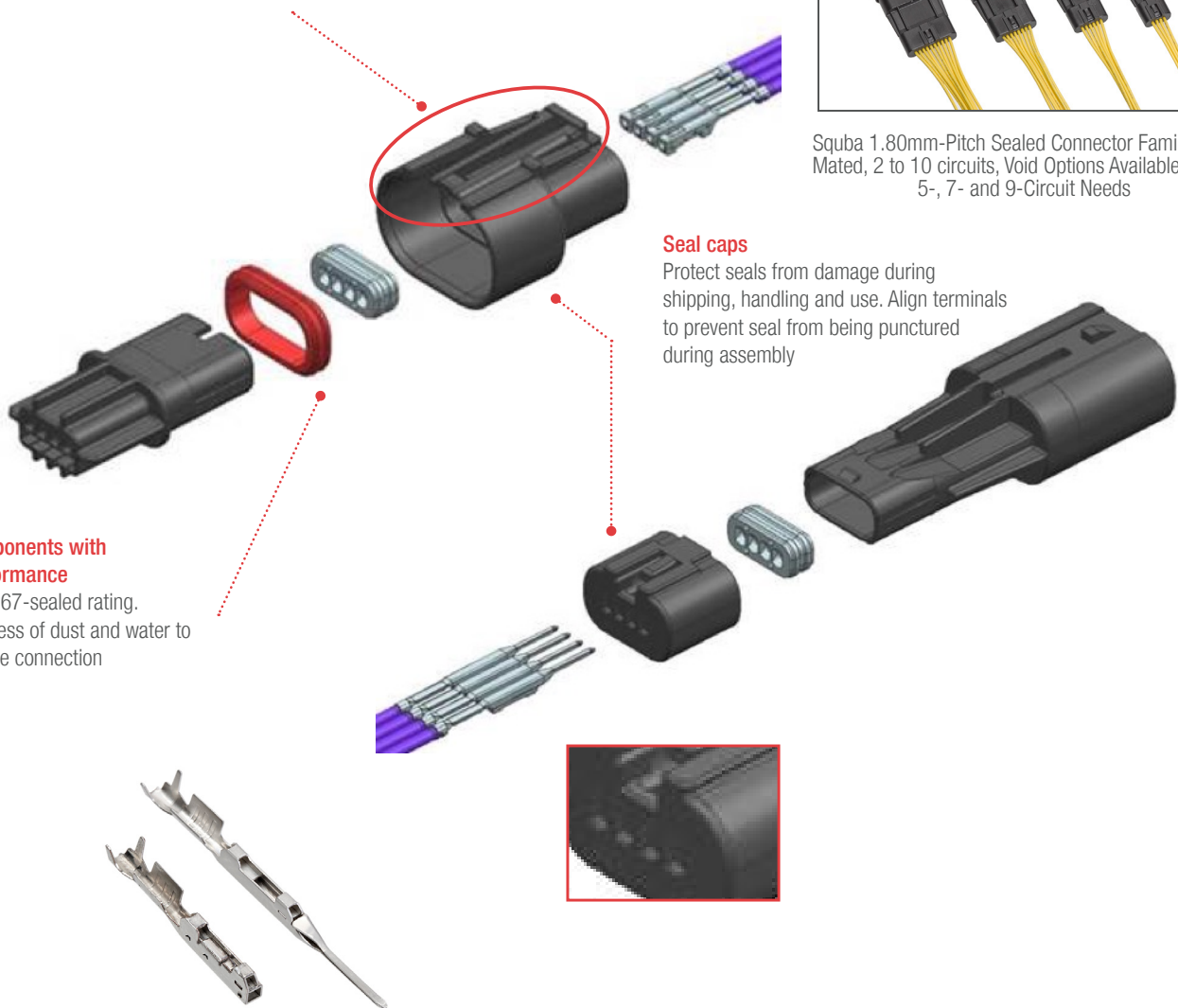
Avoids seal punctures



Squba 3.60mm-Pitch Sealed Connector Family, Fully Mated, 2 to 4 Circuits



Squba 1.80mm-Pitch Sealed Connector Family, Fully Mated, 2 to 10 circuits, Void Options Available for 3-, 5-, 7- and 9-Circuit Needs



Squba 1.80 and 3.60mm-Pitch Sealed Wire-To-Wire Connector System



Markets and Applications

Consumer

- Liquid dispensing equipment
- HVAC equipment
- Landscaping equipment

Commercial vehicle

- ATV
- Marine: under-dash wiring, lighting
- Forklifts
- Trucks
- Buses
- Recreational vehicles

Industrial

- Robotics
- Industrial machines and motors
- Food processing equipment/plants
- Industrial controls

Connected Home

- Security and surveillance
- Smart appliance
- Home health and wellness
- Home automation



Security Systems



HVAC



Robotic Arm



ATV

Specifications

REFERENCE INFORMATION

- Receptacle Packaging: Tray
- Plug Packaging: Bulk
- Crimp Terminal Packaging: Reels
- UL File No.: TBD
- CSA File No.: TBD

- | | | |
|----------------------|----------------|----------------|
| | 1.80mm | 3.60mm |
| Use With: | 22 to 24 AWG | 16 to 20 AWG |
| Insulation Diameter: | 0.95 to 1.40mm | 1.50 to 2.40mm |
| Designed In: | Millimeters | |
| RoHS: | Yes | |
| Halogen Free: | No | |
| Glow Wire Compliant: | TBD | |
| IP Rating: | IP67 | |

ELECTRICAL

	1.80mm	3.60mm
Voltage (max.):	125V	600V
Current (max.):	6.0A	14.0A
Contact Resistance:	10 milliohms	
Dielectric Withstanding Voltage:	Leakage < 5mA	
Insulation Resistance (min.):	100 Megohms	

MECHANICAL

- Terminal Retention to Housing (min.): 30N
- Mating Force (max.): 45N
- Unmating Force (max.): 35N
- Durability (max.): 10 Cycles

PHYSICAL

- Housing: Plastic
- Contact: Copper Alloy
- Plating:
 - Overall — Tin
 - Underplating — Nickel
- Operating Temperature: -40 to +105°C

Ordering Information

Series No.	Component	Pitch	Circuits
207782	Receptacle	3.60mm	2, 3 and 4
207778	Plug		
207777	Receptacle Crimp Terminal	N/A	N/A
207776	Plug Crimp Terminal		

Series No.	Component	Pitch	Circuits
204220	Receptacle	1.80mm	2 to 10
204223	Plug		
204301	Receptacle Crimp Terminal	N/A	N/A
204226	Plug Crimp Terminal		

www.molex.com/link/squba.html

Molex is a registered trademark of Molex, LLC in the United States of America and may be registered in other countries; all other trademarks listed herein belong to their respective owners.