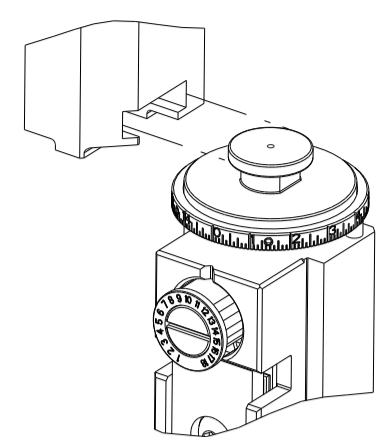


| PART NUMBER | REVISION | DESCRIPTION | FEED TYPE |
|-------------|----------|----------------------------------|------------|
| 2151216-1 | H | FINE CRIMP HEIGHT ADJUST | MECHANICAL |
| 2151216-2 | J | FINE CRIMP HEIGHT ADJUST | PNEUMATIC |
| 7-2151216-1 | H | MECHANICAL AND CRIMP TOOLING KIT | MECHANICAL |
| 7-2151216-2 | J | PNEUMATIC AND CRIMP TOOLING KIT | PNEUMATIC |
| 7-2151216-7 | A | CRIMP TOOLING KIT | - |

ATLANTIC VERSION TERMINATOR INTERFACE ADAPTER



| APPLICATOR DATA | | |
|-----------------|----------------|------|
| CRIMP | SIZE | TYPE |
| WIRE | 1.40 mm [.055] | F |
| INSUL | 1.40 mm [.055] | F |

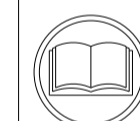
APPLICATOR INSTRUCTIONS 408-35042

| TERMINAL DATA: TE TERMINAL | | TE CRIMP SPECIFICATION | |
|------------------------------------|---------------|------------------------------|-------------|
| TERMINAL NAME: 025 G TAB CONTACT | | | |
| WIRE STRIP LENGTH | | INSULATION DIAMETER RANGE | |
| 3.00-3.50 mm [.118-.138 IN] | | ∅1.10-1.70 mm [.043-.067 IN] | |
| TERMINAL APPLICATION SPECIFICATION | (A)114-5340 | - | - |
| | (B)114-61030 | - | - |
| TERMINALS APPLIED | | | |
| TE TERMINAL | TE TERMINAL | TE TERMINAL | TE TERMINAL |
| (A) 1674742-1 | (B) 2005154-1 | (B) 2005154-2 | |

| TERMINAL DATA: TE TERMINAL | | TE CRIMP SPECIFICATION | |
|------------------------------------|-------------|------------------------------|-------------|
| TERMINAL NAME: 025 G TAB CONTACT | | | |
| WIRE STRIP LENGTH | | INSULATION DIAMETER RANGE | |
| 3.00-3.50 mm [.118-.138 IN] | | ∅1.20-1.60 mm [.047-.063 IN] | |
| TERMINAL APPLICATION SPECIFICATION | 114-15120 | - | - |
| TERMINALS APPLIED | | | |
| TE TERMINAL | TE TERMINAL | TE TERMINAL | TE TERMINAL |
| 1674742-1 | 2005154-1 | 2005154-2 | 1802190-1 |

| WIRE SIZE | CRIMP HEIGHT mm [INCH] | CRIMP HEIGHT REFERENCE SETTING |
|-----------|----------------------------|--------------------------------|
| 0.50mm2 | 1.01+/-0.05 [.040+/- .002] | 6.9 |
| 0.30mm2 | 0.96+/-0.05 [.038+/- .002] | 7.4 |

| WIRE SIZE | CRIMP HEIGHT mm [INCH] | CRIMP HEIGHT REFERENCE SETTING |
|-----------|----------------------------|--------------------------------|
| 0.50mm2 | 0.99+/-0.03 [.039+/- .001] | 7.8 |
| 0.35mm2 | 0.92+/-0.03 [.036+/- .001] | 5.8 |
| 0.22mm2 | 0.84+/-0.03 [.033+/- .001] | 6.6 |



- RECOMMENDED SPARE PARTS
- REFER TO SUPPLIED INSTRUCTION SHEET FOR CLEANING, LUBRICATION AND STORAGE OF APPLICATOR.
- APPLY PART NUMBER 2-23419-6 LOCTITE TO THREADS OF ITEM 242.
- CRIMP HEIGHT REFERENCE SETTING WAS THE SETTING USED WHEN THE APPLICATOR WAS QUALIFIED AT THE FACTORY. ADJUSTMENT MAY BE NECESSARY WHEN RUNNING APPLICATOR IN THE FIELD.
- TERMINAL LUBRICANT IS RECOMMENDED.
- 6. UNLESS SPECIFIED OTHERWISE TORQUE VALUES SHALL BE USED PER DOCUMENT, 101-35000.-
- APPLICATION SPECIFICATION 114-15120 IS RESTRICTED TO RENAULT AND ITS HARNESS MAKERS.

***WARNING**
ON INSTALLATION, SET WIRE DISC TO CRIMP HEIGHT REFERENCE SETTING FOR LARGEST WIRE SIZE. CRIMP HEIGHT REFERENCE SETTINGS GREATER THAN THE VALUE SHOWN MAY CAUSE DAMAGE TO THE CRIMP TOOLING, REFER TO THE INSTRUCTION SHEET FOR PROPER SETUP AND ADJUSTMENTS.

| LOC | DIST | REVISIONS | | | |
|-----|------|-------------|---------------|-----------|--------|
| P | LTN | DESCRIPTION | DATE | DWN | APVD |
| A | 66 | H1 | ECR-18-019286 | 11DEC2018 | FL CT |
| | | J | ECR-19-009948 | 25JUN2019 | JAH TE |
| | | J1 | ECR-21-006791 | 09JUL2021 | FJ RK |
| | | J2 | ECR-21-007109 | 02AUG2021 | AJ YY |

| | | | | | | | | |
|---|-----|-----|-----|-----|-------------|-------------------------------------|-------------------------------|---|
| - | 1 | - | 1 | - | 2119641-1 | FEED CAM, AIR FEED | 248 | |
| - | 1 | 1 | 1 | 1 | 2119082-8 | CAM, SNAIL, INSULATION ADJUSTMENT | 244 | |
| - | 1 | 1 | 1 | 1 | 2079764-1 | WASHER, WAVE SPRING, CREST-TO-CREST | 243 | |
| - | 1 | 1 | 1 | 1 | 2119083-1 | RETAINER, INSULATION DIAL | 242 | |
| - | 1 | 1 | 1 | 1 | 7-18023-7 | SCR, SKT HD CAP M3 X 4.0 | 241 | |
| - | - | 1 | - | 1 | 2119580-1 | MECHANICAL FEED ASSEMBLY | 239 | |
| - | 1 | - | 1 | - | 2844940-1 | AIR FEED MODULE | 238 | |
| - | REF | REF | REF | REF | 994970-2 | COUNTER, MAGNETIC | 164 | |
| - | 1 | 1 | 1 | 1 | 2119955-1 | ASSY, LUBRICATOR, SIDE FEED | 113 | |
| - | 1 | 1 | 1 | 1 | 2844908-1 | SCREW, LOCKING | 99 | |
| - | 1 | 1 | 1 | 1 | 2844907-1 | POST, LOCKING | 98 | |
| - | 1 | 1 | 1 | 1 | 455888-5 | SPACER, CRIMPER | 82 | |
| - | 1 | 1 | 1 | 1 | 1803607-3 | DOCUMENTATION PACKAGE | 71 | |
| - | 1 | 1 | 1 | 1 | 2119791-9 | DEPRESSOR, WIRE | 70 | |
| - | 1 | 1 | 1 | 1 | 2119740-1 | TAG, IDENTIFICATION | 67 | |
| - | 2 | 2 | 2 | 2 | 2168078-1 | SCREW, DRIVE, RH, RoHS, 2 x .188 | 66 | |
| - | 1 | 1 | 1 | 1 | 2168083-2 | SCR, SKT HD CAP, RoHS, M4 X 8.0 | 60 | |
| - | 1 | 1 | 1 | 1 | 5-18022-5 | SCR, HEX HD CAP, M4 X 6.0 | 59 | |
| - | 1 | 1 | 1 | 1 | 1338685-1 | PAWL, FEED | 56 | |
| - | 4 | 4 | 4 | 4 | 2168083-3 | SCR, SKT HD CAP, RoHS, M4 X 12.0 | 54 | |
| - | 2 | 2 | 2 | 2 | 2-2168083-6 | SCR, SKT HD CAP, RoHS, M4 X 18 | 53 | |
| - | 1 | 1 | 1 | 1 | 1803382-6 | HOLD DOWN, SPRING LOADED | 50 | |
| - | 1 | 2 | 1 | 2 | 18023-9 | SCR, SKT HD CAP M4 X 6.0 | 49 | |
| - | - | 1 | - | 1 | 2119652-1 | FEED CAM, PRE FEED | 48 | |
| - | - | 1 | - | 1 | 2119653-1 | FEED CAM, POST FEED | 47 | |
| - | 1 | 1 | 1 | 1 | 1803583-9 | APPLICATOR BASIC ASSEMBLY, SF | 46 | |
| - | 1 | 1 | 1 | 1 | 1803515-1 | RAM ASSEMBLY, SF ATLANTIC | 44 | |
| - | 1 | 1 | 1 | 1 | 1803602-1 | SCR, BHSC, RoHS (M8 X 25) | 41 | |
| - | 1 | 1 | 1 | 1 | 1-1752356-9 | SUPPORT, TERMINAL | 34 | |
| - | 2 | 2 | 2 | 2 | 2079383-5 | SCR, BHSC, RoHS (M4 X 20) | 33 | |
| - | 2 | 2 | 2 | 2 | 2-2844962-4 | SPACER, CYLINDRICAL, STRIP GUIDE | 30 | |
| - | 1 | 1 | 1 | 1 | 2844992-1 | ASSEMBLY, STRIP GUIDE | 29 | |
| - | 1 | 1 | 1 | 1 | 1320928-2 | STRIP GUIDE | 24 | |
| - | 1 | 1 | 1 | 1 | 2168083-2 | SCR, SKT HD CAP, RoHS, M4 X 8.0 | 21 | |
| - | 2 | 2 | 2 | 2 | 1-18028-2 | WASHER, FLAT, REG M4 | 20 | |
| - | 1 | 1 | 1 | 1 | 2119533-1 | STRIPPER, SIDE FEED | 19 | |
| - | 1 | 1 | 1 | 1 | 2119806-1 | INSERT, SHEAR | 13 | |
| - | 1 | 1 | 1 | 1 | 3-22280-3 | SPRING, COMPRESSION | 12 | |
| - | 1 | 1 | 1 | 1 | 1-356885-3 | STOP, SHEAR | 11 | |
| - | 1 | 1 | 1 | 1 | 2119805-1 | SHEAR HOLDER, FRONT | 10 | |
| - | 1 | 1 | 1 | 1 | 1633861-1 | SHEAR, FLOATING | 9 | |
| - | 1 | 2 | 2 | 1 | 1 | 7-1333201-1 | ANVIL, COMBINATION | 8 |
| - | 1 | 1 | 1 | 1 | 6-240641-8 | SPACER | 7 | |
| - | - | - | - | - | - | - | 6 | |
| - | 1 | 1 | 1 | 1 | 1-2119757-1 | DEPRESSOR, SHEAR | 5 | |
| - | 1 | 1 | 1 | 1 | 1-238011-0 | BLOCK, CRIMPER SPACER | 4 | |
| - | 1 | 2 | 2 | 1 | 1 | 1633962-2 | CRIMPER, INSULATION F PREMIUM | 3 |
| - | 1 | 1 | 1 | 1 | 455888-2 | SPACER, CRIMPER | 2 | |
| - | 1 | 2 | 2 | 1 | 1 | 456402-1 | CRIMPER, WIRE PREMIUM | 1 |

| | | | |
|----------------------------------------|---------|-----------------------------------------|----------|
| DIMENSIONS: | | TOLERANCES UNLESS OTHERWISE SPECIFIED: | |
| mm | 0 PLC ± | 1 PLC ± | 2 PLC ± |
| | 3 PLC ± | 4 PLC ± | ANGLES ± |
| | FINISH | | |
| MATERIAL: | | FINISH: | |
| | | | |
| DWN L. ZHANG 10AUG2011 | | CHK L. ZHANG 10AUG2011 | |
| APVD S. XI 10AUG2011 | | NAME | |
| PRODUCT SPEC | | OCEAN SIDE FEED APPLICATOR | |
| APPLICATION SPEC | | SIZE CAGE CODE DRAWING NO RESTRICTED TO | |
| WEIGHT | | A1 00779 C=2151216 | |
| Customer Accessible Production Drawing | | SCALE 1:2 SHEET 1 OF 4 REV J2 | |

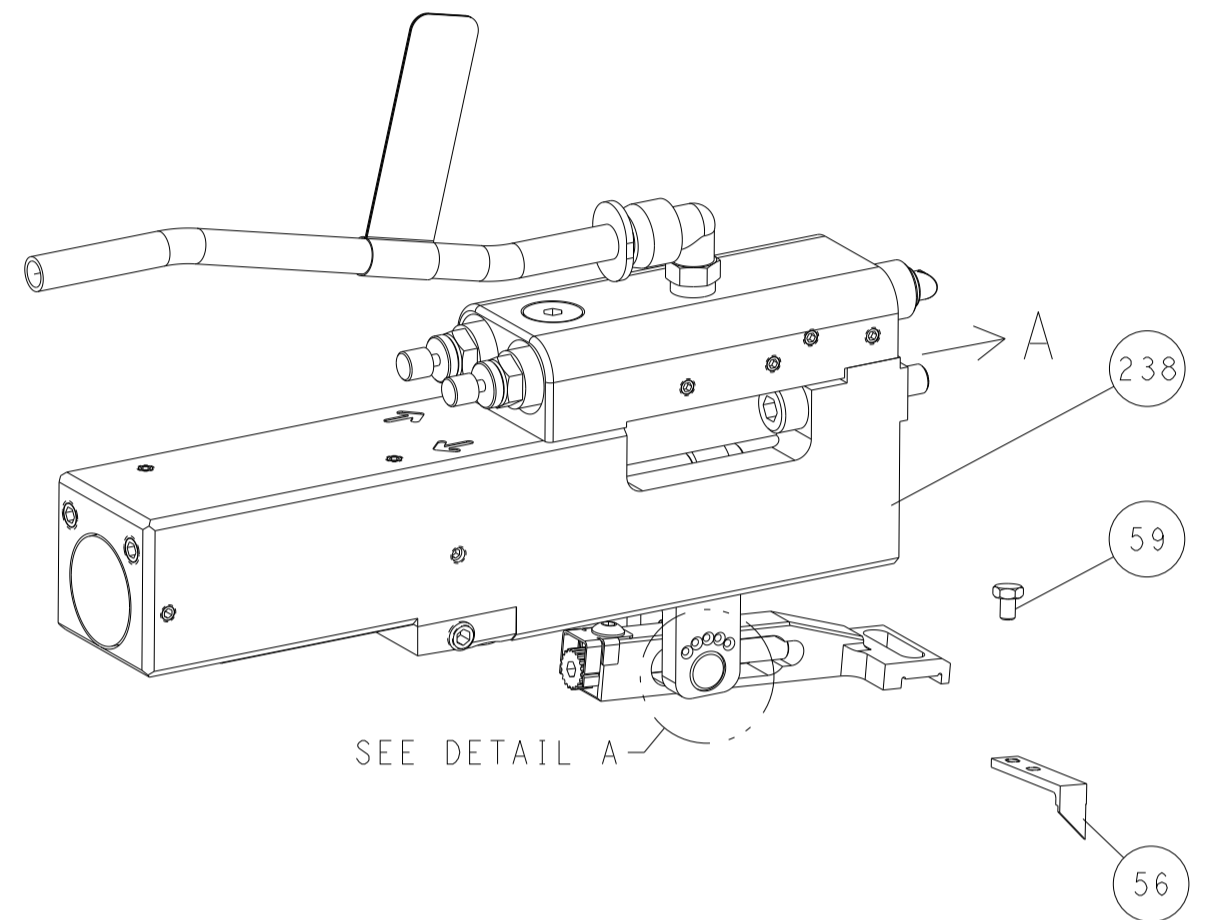
ATLANTIC VERSION
Shown on sheets 1 of 4 & 2 of 4
(Pacific version shown on sheets 3 of 4 & 4 of 4)

| LOC | DIST | REV | DATE | BY | APPV |
|-----|------|-----|------|----|------|
| A | 66 | | | | |
| | | | | | |
| | | | | | |

FEED TYPE MECHANICAL



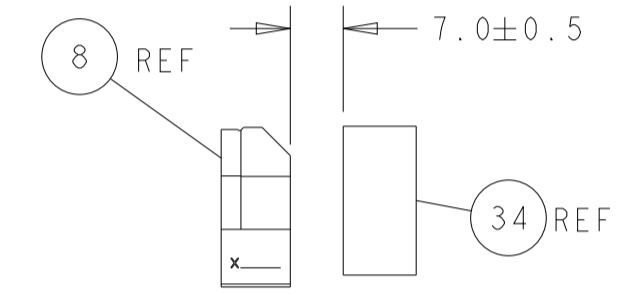
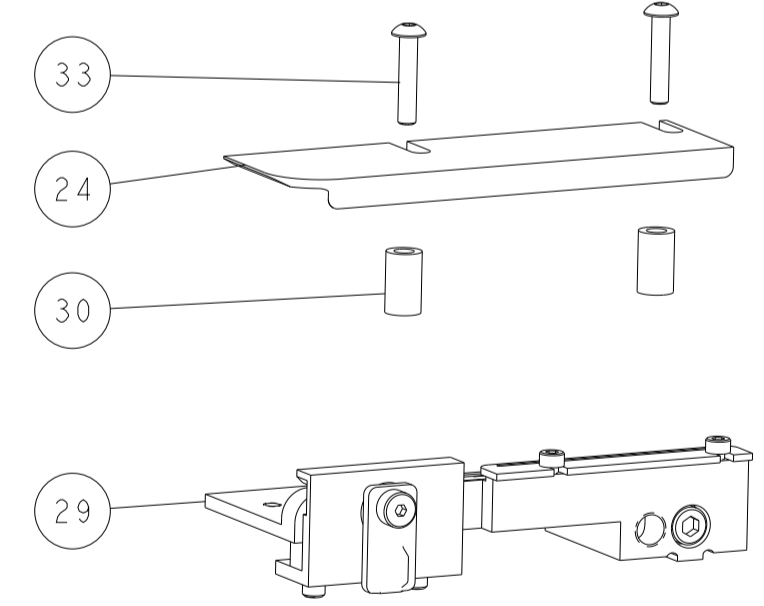
PNEUMATIC



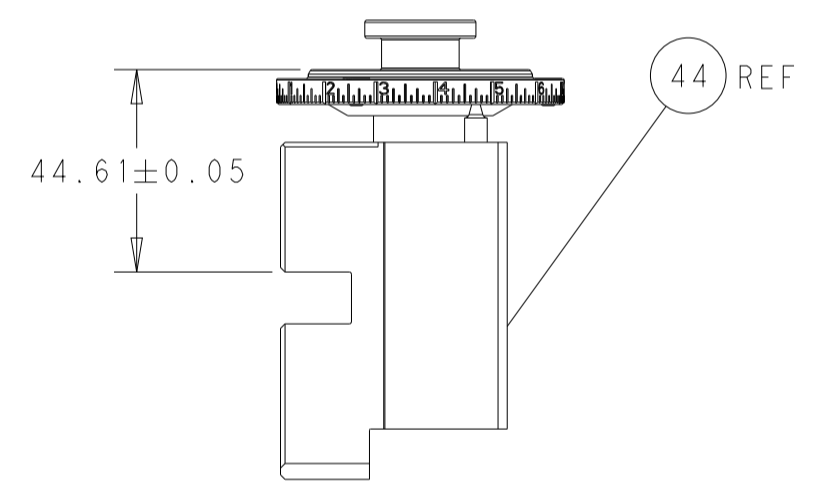
FEED SPRING SETTING POSITION (SHOWN FROM REAR SIDE)



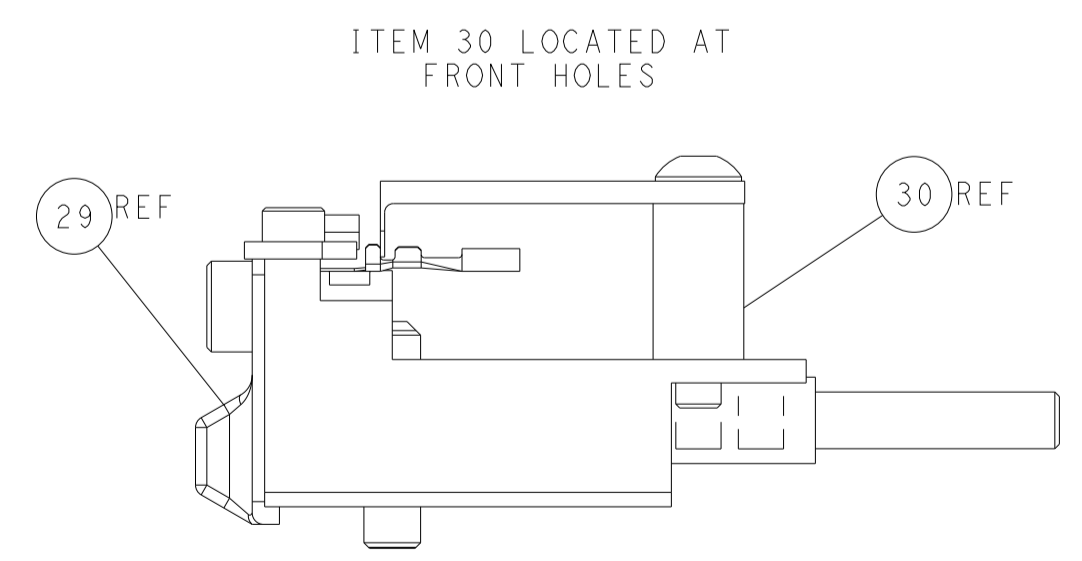
DETAIL A



TERMINAL SUPPORT LOCATION

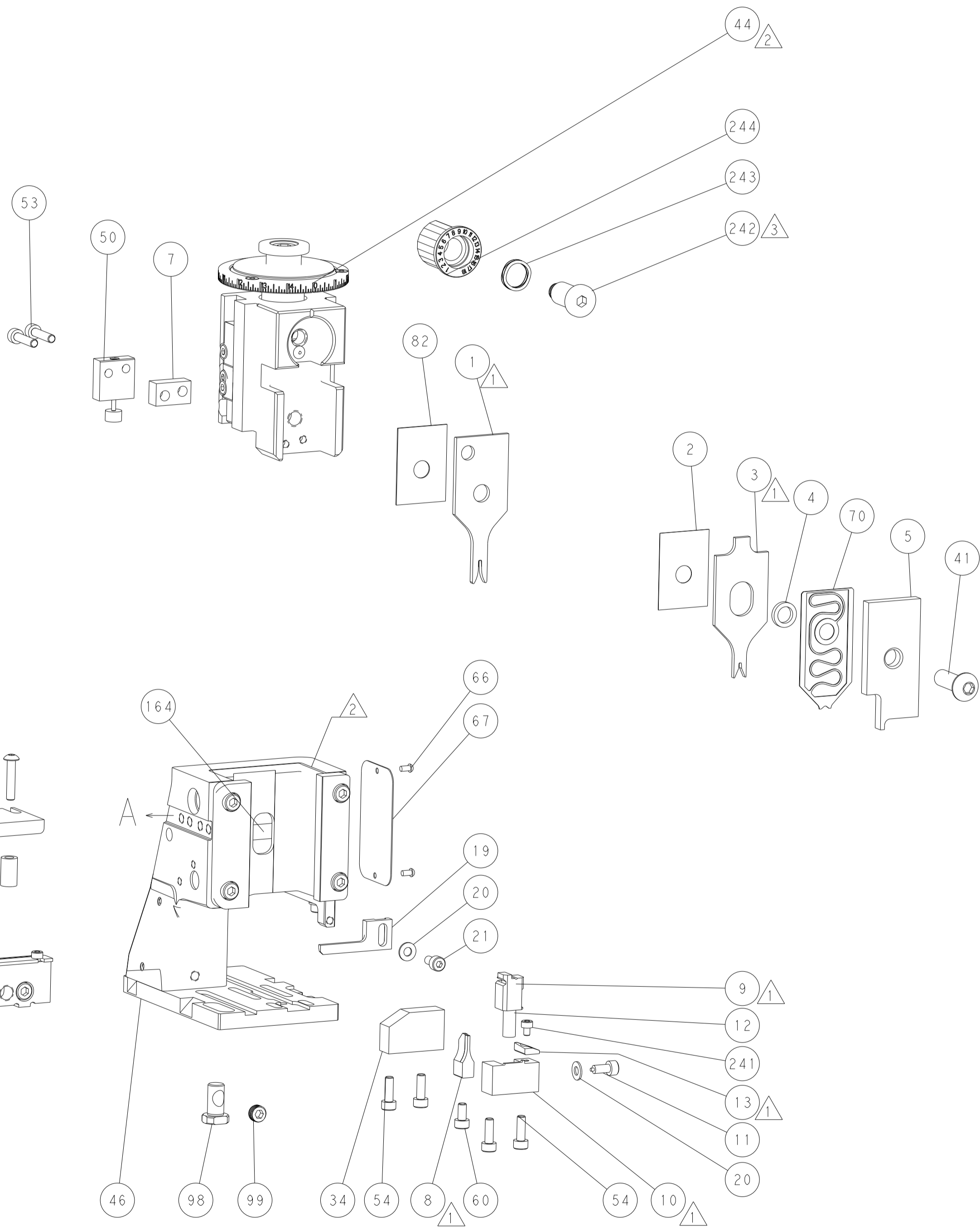
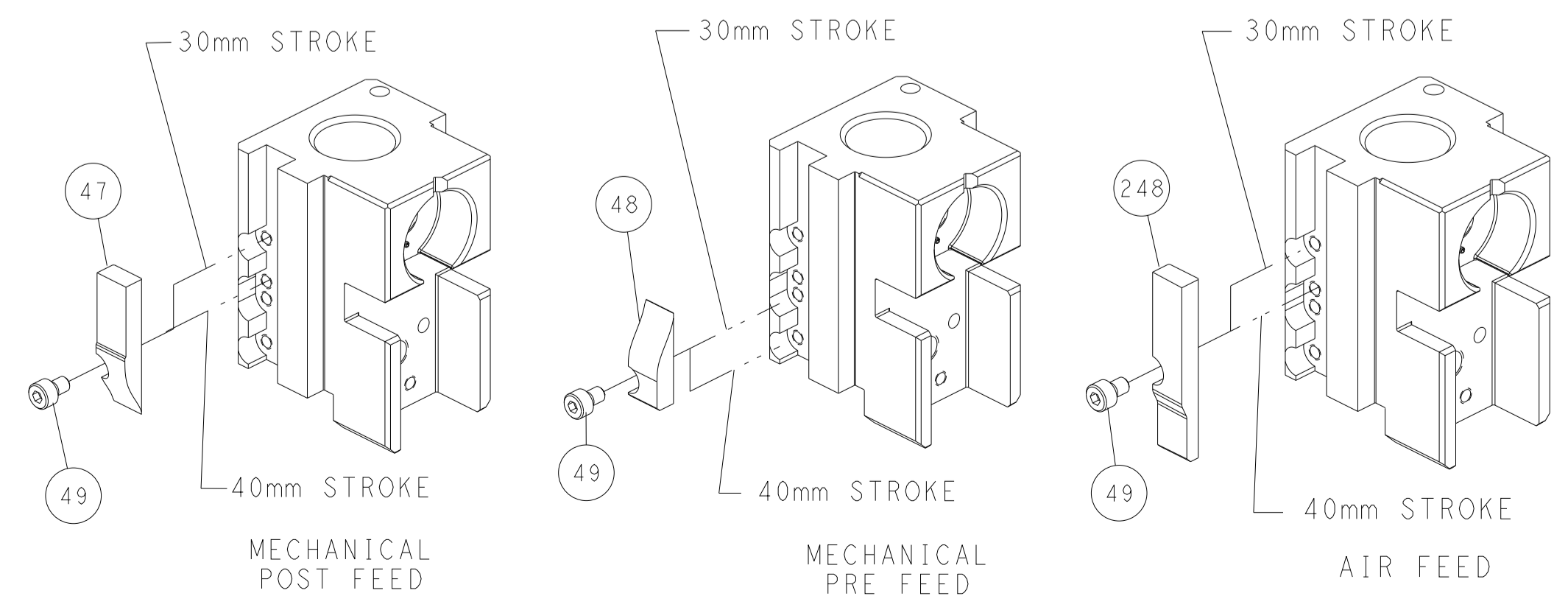


RAM SET-UP



FEED TRACK POSITION GUIDE BY INSULATION BARREL

CAM POSITIONS



ATLANTIC VERSION
 Shown on sheets 1 of 4 & 2 of 4
 (Pacific version shown on sheets 3 of 4 & 4 of 4)

| | | | | | | | |
|-----------------------------------------------------------------------------------------------------------------------------------------------------------------------------------------------------------------------------------------------------------------------------------------------------------------------------------------------|--|-----------------------------------------------------------------------------------------------------------------------|--|------------------------------------------------------------------------------------------------------------------------------------------------------------------|--|------------------------------------------------------------------------------------------------------------------------------------|--|
| DIMENSIONS: mm | | TOLERANCES UNLESS OTHERWISE SPECIFIED: 0 PLC ± 1 PLC ± 2 PLC ± 3 PLC ± 4 PLC ± ANGLES ± FINISH ± | | DWN L. ZHANG 10AUG2011 CHK L. ZHANG 10AUG2011 APVD S. XI 10AUG2011 PRODUCT SPEC APPLICATION SPEC WEIGHT Customer Accessible Production Drawing | | NAME Ocean Side Feed Applicator SIZE CAGE CODE DRAWING NO. RESTRICTED TO A1 00779 C=2151216 SCALE 1:2 SHEET 2 OF 4 REV J2 | |
| THIS DRAWING IS UNPUBLISHED. RELEASED FOR PUBLICATION. IT IS THE PROPERTY OF TYCO ELECTRONICS CORPORATION. IT IS TO BE USED ONLY FOR THE PROJECT AND FOR THE CUSTOMER'S USE. IT IS NOT TO BE REPRODUCED OR TRANSMITTED IN ANY FORM OR BY ANY MEANS, ELECTRONIC OR MECHANICAL, WITHOUT THE WRITTEN PERMISSION OF TYCO ELECTRONICS CORPORATION. | | | | STE TE Connectivity Harrisburg, PA 17105-3608 | | | |

| PART NUMBER | REVISION | DESCRIPTION | FEED TYPE |
|-------------|----------|--------------------------|------------|
| 2-2151216-1 | H | FINE CRIMP HEIGHT ADJUST | MECHANICAL |
| 2-2151216-2 | J | FINE CRIMP HEIGHT ADJUST | PNEUMATIC |
| 7-2151216-7 | A | CRIMP TOOLING KIT | - |

PACIFIC VERSION TERMINATOR
 INTERFACE ADAPTER



| APPLICATOR DATA | | |
|--------------------------------------|----------------|------|
| CRIMP | SIZE | TYPE |
| WIRE | 1.40 mm [.055] | F |
| INSUL | 1.40 mm [.055] | F |
| APPLICATOR INSTRUCTIONS 408-35042 | | |

| TERMINAL DATA: TE TERMINAL TE CRIMP SPECIFICATION | | | |
|---------------------------------------------------|---------------|------------------------------|-------------|
| TERMINAL NAME: 025 G TAB CONTACT | | | |
| WIRE STRIP LENGTH | | INSULATION DIAMETER RANGE | |
| 3.00-3.50 mm [.118-.138 IN] | | Ø1.10-1.70 mm [.043-.067 IN] | |
| TERMINAL APPLICATION SPECIFICATION | (A)114-5340 | - | - |
| | (B)114-61030 | - | - |
| TERMINALS APPLIED | | | |
| TE TERMINAL | TE TERMINAL | TE TERMINAL | TE TERMINAL |
| (A) 1674742-1 | (B) 2005154-1 | (B) 2005154-2 | |

| TERMINAL DATA: TE TERMINAL TE CRIMP SPECIFICATION | | | |
|---------------------------------------------------|-------------|------------------------------|-------------|
| TERMINAL NAME: 025 G TAB CONTACT | | | |
| WIRE STRIP LENGTH | | INSULATION DIAMETER RANGE | |
| 3.00-3.50 mm [.118-.138 IN] | | Ø1.20-1.60 mm [.047-.063 IN] | |
| TERMINAL APPLICATION SPECIFICATION | 114-15120 | - | - |
| TERMINALS APPLIED | | | |
| TE TERMINAL | TE TERMINAL | TE TERMINAL | TE TERMINAL |
| 1674742-1 | 2005154-1 | 2005154-2 | 1802190-1 |

| WIRE SIZE | CRIMP HEIGHT mm [INCH] | CRIMP HEIGHT REFERENCE SETTING |
|-----------|----------------------------|--------------------------------|
| 0.50mm2 | 1.01+/-0.05 [.040+/-0.002] | 6.9 |
| 0.30mm2 | 0.96+/-0.05 [.038+/-0.002] | 7.4 |

| WIRE SIZE | CRIMP HEIGHT mm [INCH] | CRIMP HEIGHT REFERENCE SETTING |
|-----------|----------------------------|--------------------------------|
| 0.50mm2 | 0.99+/-0.03 [.039+/-0.001] | 7.8 |
| 0.35mm2 | 0.92+/-0.03 [.036+/-0.001] | 5.8 |
| 0.22mm2 | 0.84+/-0.03 [.033+/-0.001] | 6.6 |

- RECOMMENDED SPARE PARTS
- REFER TO SUPPLIED INSTRUCTION SHEET FOR CLEANING, LUBRICATION AND STORAGE OF APPLICATOR.
- APPLY PART NUMBER 2-23419-6 LOCTITE TO THREADS OF ITEM 242.
- CRIMP HEIGHT REFERENCE SETTING WAS THE SETTING USED WHEN THE APPLICATOR WAS QUALIFIED AT THE FACTORY. ADJUSTMENT MAY BE NECESSARY WHEN RUNNING APPLICATOR IN THE FIELD.
- TERMINAL LUBRICANT IS RECOMMENDED.
- 6. UNLESS SPECIFIED OTHERWISE TORQUE VALUES SHALL BE USED PER DOCUMENT, 101-35000.
- APPLICATION SPECIFICATION 114-15120 IS RESTRICTED TO RENAULT AND ITS HARNESS MAKERS.

***WARNING**
 ON INSTALLATION, SET WIRE DISC TO CRIMP HEIGHT REFERENCE SETTING FOR LARGEST WIRE SIZE. CRIMP HEIGHT REFERENCE SETTINGS GREATER THAN THE VALUE SHOWN MAY CAUSE DAMAGE TO THE CRIMP TOOLING, REFER TO THE INSTRUCTION SHEET FOR PROPER SETUP AND ADJUSTMENTS.

| ENTRY LEVEL APPLICATOR | | ITEM SUBSTITUTION LIST | | |
|------------------------|-------------|------------------------|---------------------|------------------------|
| PART NUMBER | SAME AS | ITEM | ITEM DESCRIPTION | SUBSTITUTE PART NUMBER |
| 8-2151216-1 | 2151216-1 | 1 | WIRE CRIMPER | 1803530-1 |
| 8-2151216-2 | 2151216-2 | 3 | INSULATION CRIMPER | 1803635-2 |
| 9-2151216-1 | 2-2151216-1 | 46 | BASIC SUB -ASSEMBLY | 1803940-9 |
| 9-2151216-2 | 2-2151216-2 | 141 | BASIC SUB -ASSEMBLY | 1-1803940-0 |
| | | | LUBRICATOR | DELETE |

PACIFIC VERSION
 Shown on sheets 3 of 4 & 4 of 4
 (Atlantic version shown on sheets 1 of 4 & 2 of 4)

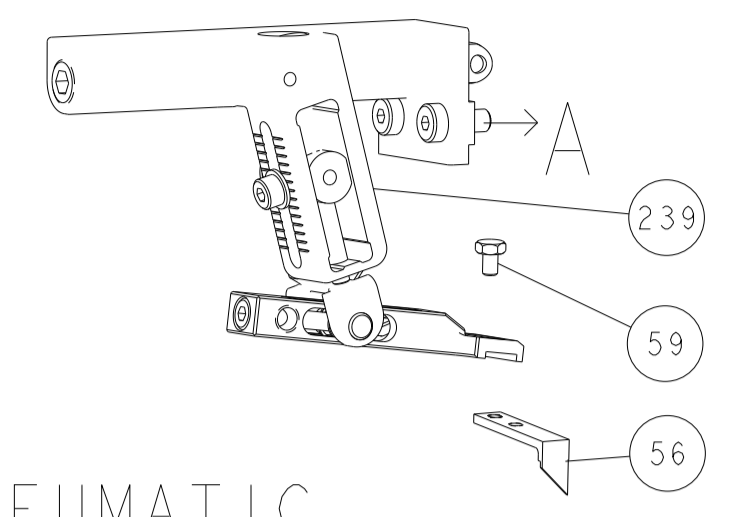
| LOC | DIST | REVISIONS | | | | | |
|-----|------|-----------|-----|-------------|------|-----|------|
| A | 66 | P | LTN | DESCRIPTION | DATE | OWN | APVD |
| | | - | - | SEE SHEET 1 | - | - | - |

| | | | | | | |
|---|-----|-----|-------------|-------------------------------------|-------------------------------|---|
| - | 1 | 1 | 2119082-8 | CAM, SNAIL, INSULATION ADJUSTMENT | 244 | |
| - | 1 | 1 | 2079764-1 | WASHER, WAVE SPRING, CREST-TO-CREST | 243 | |
| | - | 1 | 2119083-1 | RETAINER, INSULATION DIAL | 242 | |
| - | 1 | 1 | 7-18023-7 | SCR, SKT HD CAP M3 X 4.0 | 241 | |
| - | - | 1 | 2119580-1 | MECHANICAL FEED ASSEMBLY | 239 | |
| - | 1 | - | 2844940-1 | AIR FEED MODULE | 238 | |
| - | REF | REF | 994970-2 | COUNTER, MAGNETIC | 164 | |
| - | 1 | - | 2119641-2 | FEED CAM, AIR FEED | 151 | |
| - | 1 | 1 | 2168083-8 | SCR, SKT HD CAP, RoHS, M4 X 16 | 144 | |
| - | 4 | 4 | 2168083-9 | SCR, SKT HD CAP, RoHS, M4 X 20 | 143 | |
| - | - | 1 | 2119653-2 | FEED CAM, POST FEED | 142 | |
| - | 1 | 1 | 1-1803583-0 | APPLICATOR BASIC ASSEMBLY, SF | 141 | |
| - | 1 | 1 | 1803516-1 | RAM ASSEMBLY, SF PACIFIC | 140 | |
| | - | 1 | 2119955-1 | ASSY, LUBRICATOR, SIDE FEED | 113 | |
| - | 1 | 1 | 2844908-1 | SCREW, LOCKING | 99 | |
| - | 1 | 1 | 2844907-1 | POST, LOCKING | 98 | |
| - | 1 | 1 | 455888-5 | SPACER, CRIMPER | 82 | |
| - | 1 | 1 | 1803607-3 | DOCUMENTATION PACKAGE | 71 | |
| - | 1 | 1 | 2119791-9 | DEPRESSOR, WIRE | 70 | |
| - | 1 | 1 | 2119740-1 | TAG, IDENTIFICATION | 67 | |
| - | 2 | 2 | 2168078-1 | SCREW, DRIVE, RH, RoHS, 2 x .188 | 66 | |
| - | 1 | 1 | 5-18022-5 | SCR, HEX HD CAP, M4 X 6.0 | 59 | |
| - | 1 | 1 | 1338685-1 | PAWL, FEED | 56 | |
| - | 2 | 2 | 2-2168083-6 | SCR, SKT HD CAP, RoHS, M4 X 18 | 53 | |
| - | 1 | 1 | 1803382-6 | HOLD DOWN, SPRING LOADED | 50 | |
| - | 1 | 2 | 18023-9 | SCR, SKT HD CAP M4 X 6.0 | 49 | |
| - | - | 1 | 2119652-1 | FEED CAM, PRE FEED | 48 | |
| - | 1 | 1 | 1803602-1 | SCR, BHSC, RoHS (M8 X 25) | 41 | |
| - | 1 | 1 | 1-1752356-9 | SUPPORT, TERMINAL | 34 | |
| - | 2 | 2 | 2079383-5 | SCR, BHSC, RoHS (M4 X 20) | 33 | |
| - | 2 | 2 | 2-2844962-4 | SPACER, CYLINDRICAL, STRIP GUIDE | 30 | |
| - | 1 | 1 | 2844992-1 | ASSEMBLY, STRIP GUIDE | 29 | |
| - | 1 | 1 | 1320928-2 | STRIP GUIDE | 24 | |
| - | 1 | 1 | 2168083-2 | SCR, SKT HD CAP, RoHS, M4 X 8.0 | 21 | |
| - | 2 | 2 | 1-18028-2 | WASHER, FLAT, REG M4 | 20 | |
| - | 1 | 1 | 2119533-1 | STRIPPER, SIDE FEED | 19 | |
| | - | 1 | 2119806-1 | INSERT, SHEAR | 13 | |
| - | 1 | 1 | 3-22280-3 | SPRING, COMPRESSION | 12 | |
| - | 1 | 1 | 1-356885-3 | STOP, SHEAR | 11 | |
| | - | 1 | 2119805-1 | SHEAR HOLDER, FRONT | 10 | |
| | - | 1 | 1633861-1 | SHEAR, FLOATING | 9 | |
| | 1 | 1 | 1 | 7-1333201-1 | ANVIL, COMBINATION | 8 |
| - | 1 | 1 | 6-240641-8 | SPACER | 7 | |
| - | - | - | - | - | 6 | |
| - | 1 | 1 | 1-2119757-1 | DEPRESSOR, SHEAR | 5 | |
| - | 1 | 1 | 1-238011-0 | BLOCK, CRIMPER SPACER | 4 | |
| | 1 | 1 | 1 | 1633962-2 | CRIMPER, INSULATION F PREMIUM | 3 |
| - | 1 | 1 | 455888-2 | SPACER, CRIMPER | 2 | |
| | 1 | 1 | 1 | 456402-1 | CRIMPER, WIRE PREMIUM | 1 |

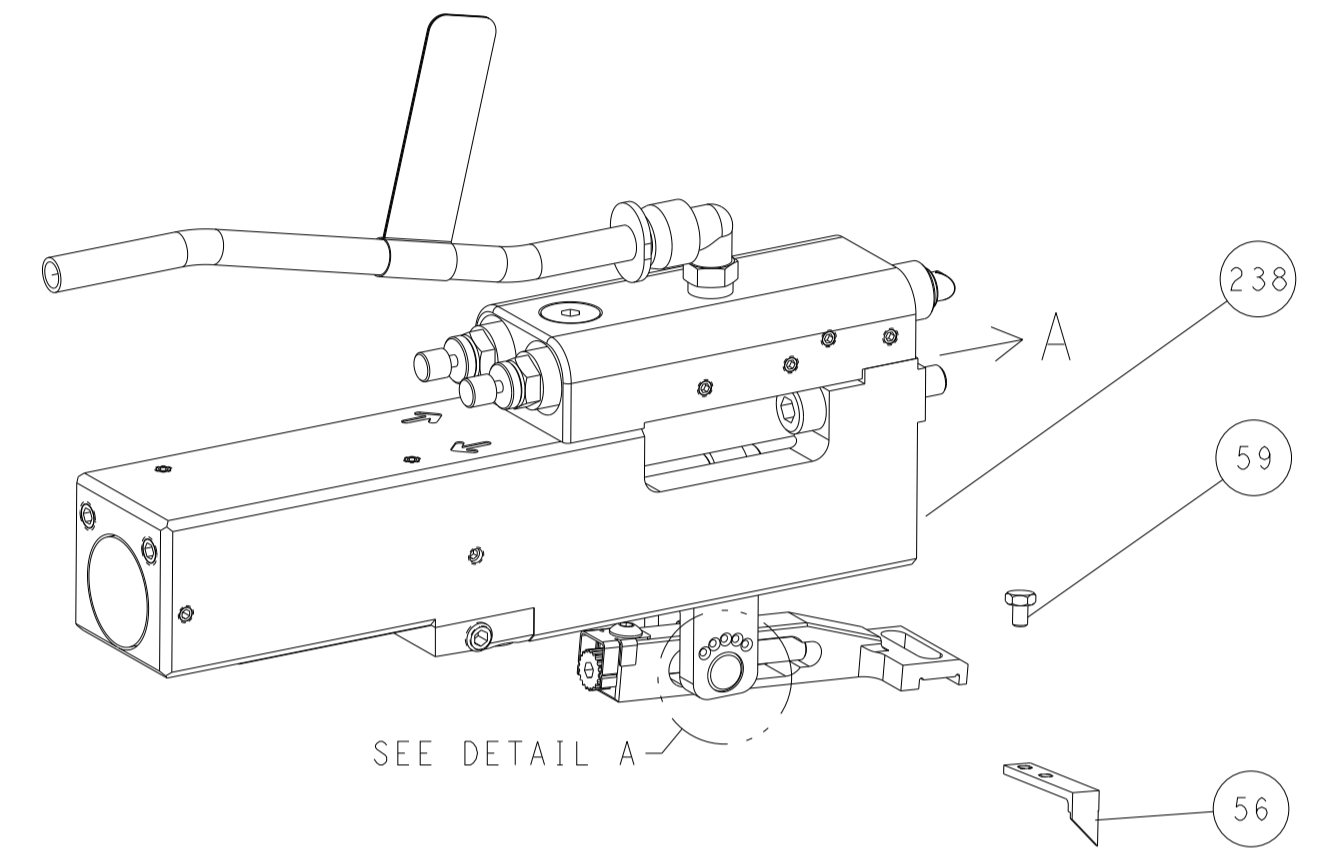
| DIMENSIONS: | | TOLERANCES UNLESS OTHERWISE SPECIFIED: | | APVD | | NAME | |
|-------------|---------|----------------------------------------|----------|--------|----|-----------|----------------------------------------|
| mm | 0 PLC ± | 1 PLC ± | 2 PLC ± | S | XI | 10AUG2011 | TE Connectivity |
| | 3 PLC ± | 4 PLC ± | ANGLES ± | FINISH | | | Harrisburg, PA 17105-3608 |
| MATERIAL | | | | | | | Ocean Side Feed Applicator |
| | | | | | | | Customer Accessible Production Drawing |

| LOC | DIST | REVISIONS | | | |
|-----|------|-------------|------|----|------|
| A | 66 | REV | DATE | BY | APPV |
| - | - | SEE SHEET 1 | - | - | - |

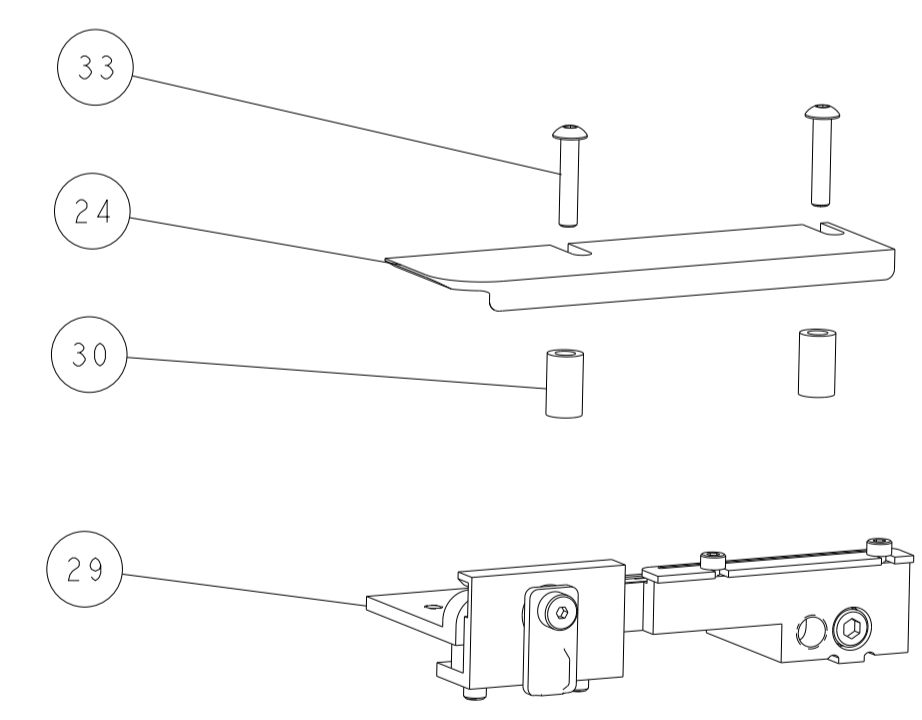
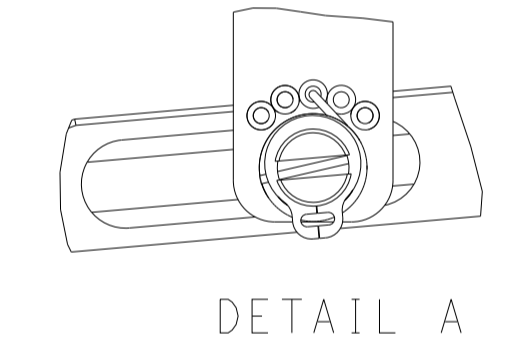
FEED TYPE MECHANICAL



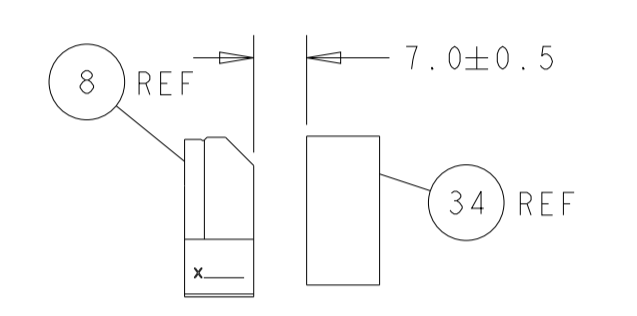
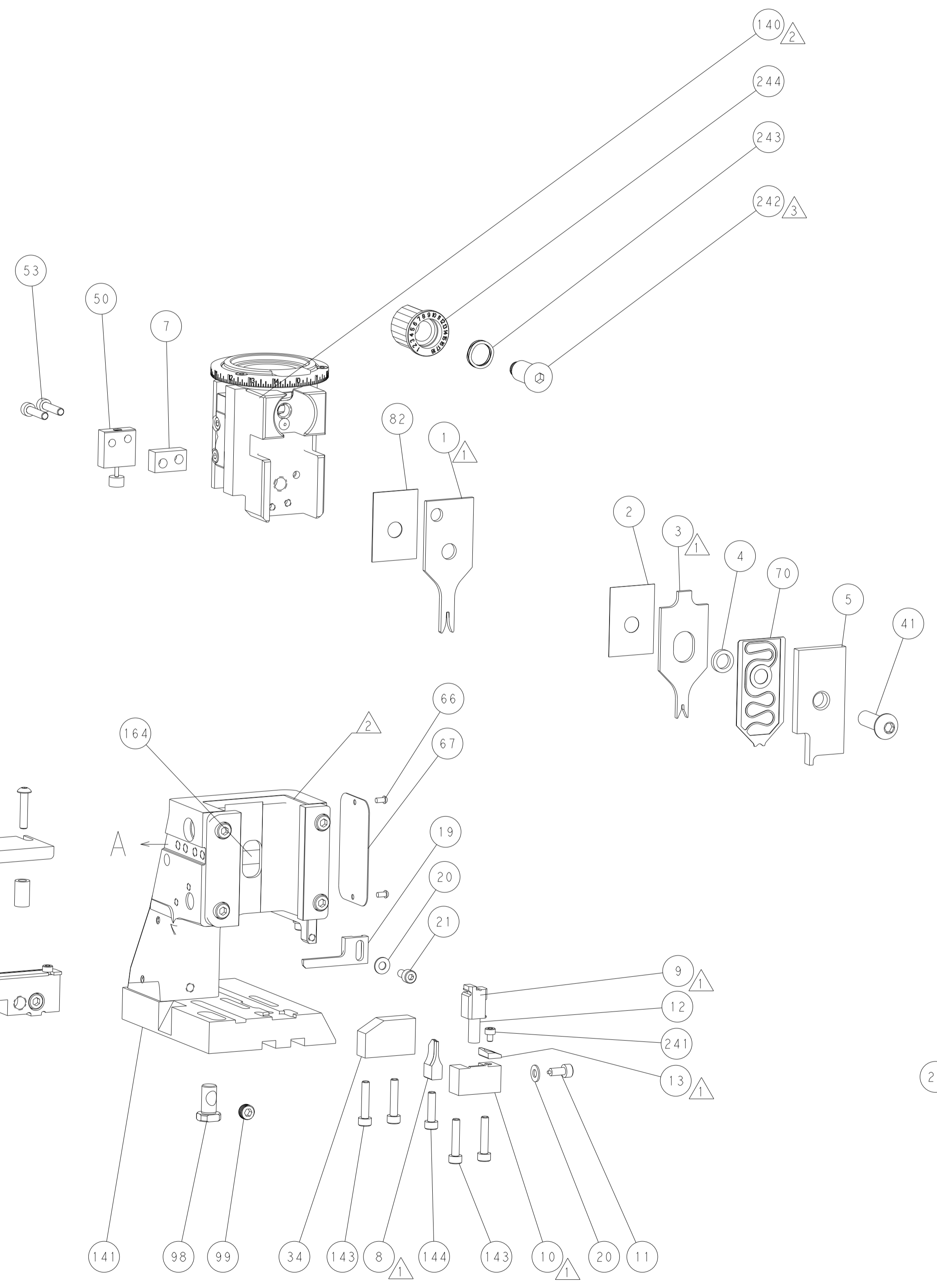
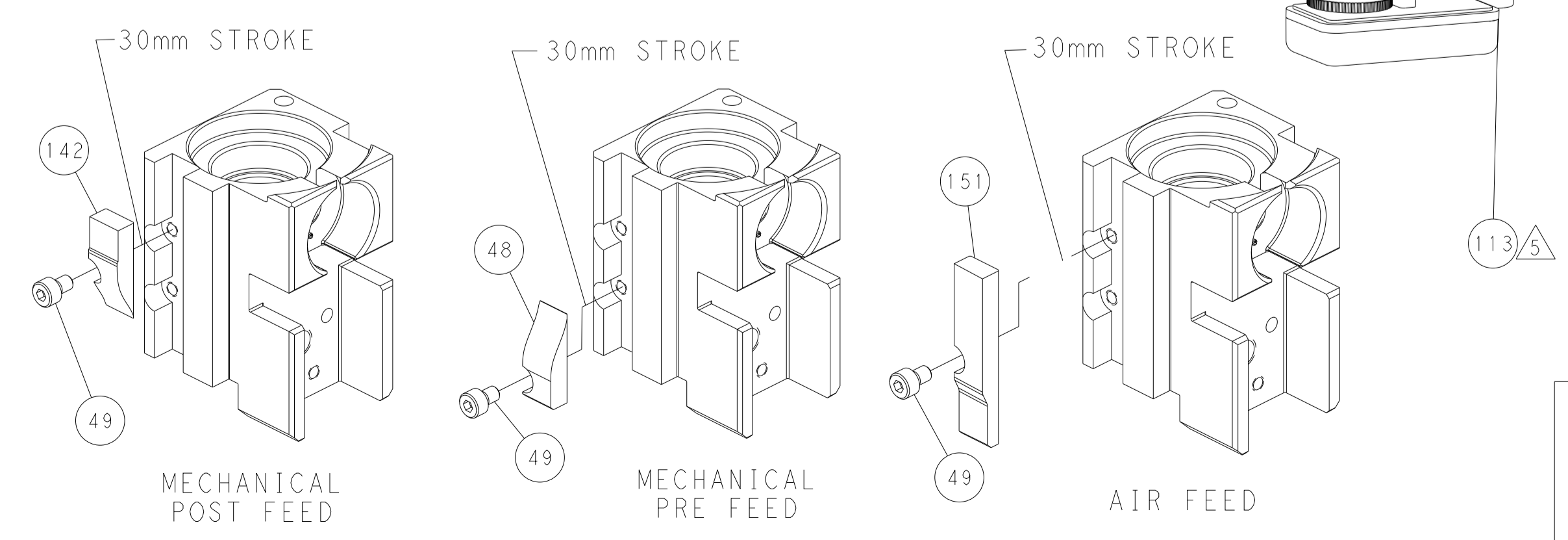
PNEUMATIC



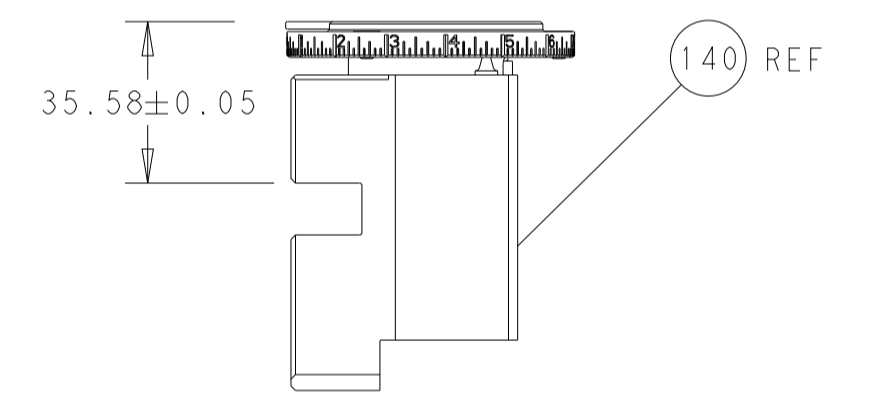
FEED SPRING SETTING POSITION (SHOWN FROM REAR SIDE)



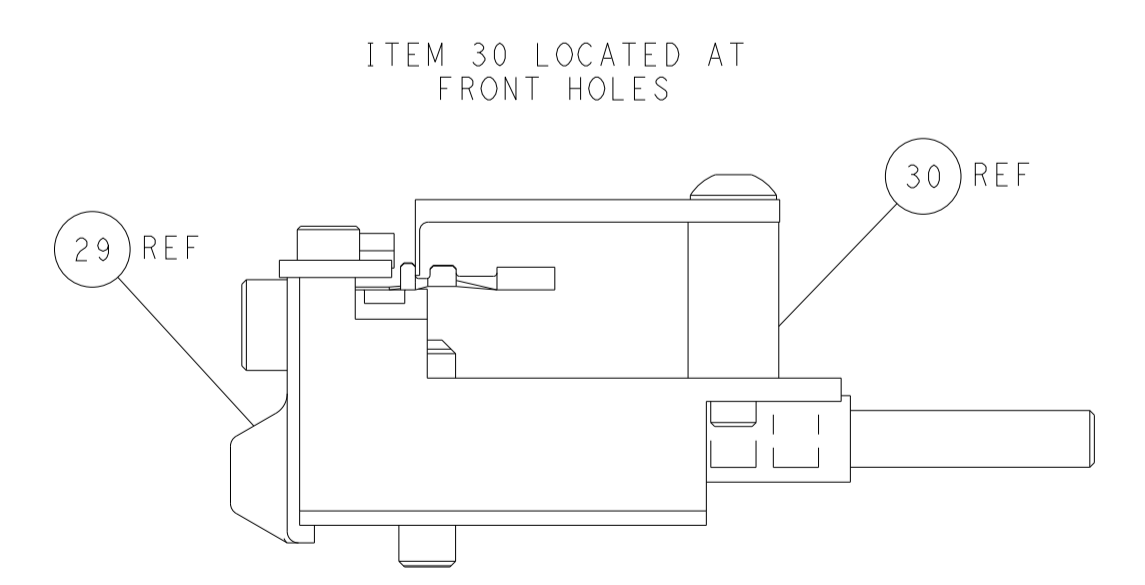
CAM POSITIONS



TERMINAL SUPPORT LOCATION



RAM SET-UP



FEED TRACK POSITION GUIDE BY INSULATION BARREL

PACIFIC VERSION
 Shown on sheets 3 of 4 & 4 of 4
 (Atlantic version shown on sheets 1 of 4 & 2 of 4)

| | | | |
|----------------------------------------------------------------------------------------------------------------------------------------------------------------------------------------------------------------------------------------------------|--|--------------------------------------------------------------------------|-------------------------------------------------------------------------|
| <small>THIS DRAWING IS UNPUBLISHED. RELEASED FOR PUBLICATION. ALL RIGHTS RESERVED. THIS DRAWING IS UNPUBLISHED. RELEASED FOR PUBLICATION. ALL RIGHTS RESERVED. THIS DRAWING IS UNPUBLISHED. RELEASED FOR PUBLICATION. ALL RIGHTS RESERVED.</small> | | DWN L. ZHANG 10AUG2011 CHK L. ZHANG 10AUG2011 APVD S. XI 10AUG2011 | TE Connectivity Harrisburg, PA 17105-3608 |
| DIMENSIONS: mm TOLERANCES UNLESS OTHERWISE SPECIFIED: 0 PLC ± 1 PLC ± 2 PLC ± 3 PLC ± 4 PLC ± ANGLES FINISH ± | | NAME Ocean Side Feed Applicator APPLICATION SPEC PRODUCT SPEC | RESTRICTED TO SIZE CAGE CODE DRAWING NO A1 00779 C=2151216 |
| MATERIAL: | | WEIGHT: | SCALE 1:2 SHEET 4 OF 4 REV J2 Customer Accessible Production Drawing |