

ITEM	PART#	DESCRIPTION	QTY	UOM
A,B	50579402	SL Crp Hsg G SR Pos Lch 2 ckt Opt G	2	PC
C	16020086	SL Fem Crimp Term 22-24 Tin Reel x	4	PC
D	--	PAPER PRINTED PAPER WHITE	1	PC

FROM	TO	DESCRIPTION	COLOR
A1	B2	1X22AWG DISC MPPE BK UL11028	BLACK
A2	B1	1X22AWG DISC MPPE BK UL11028	BLACK

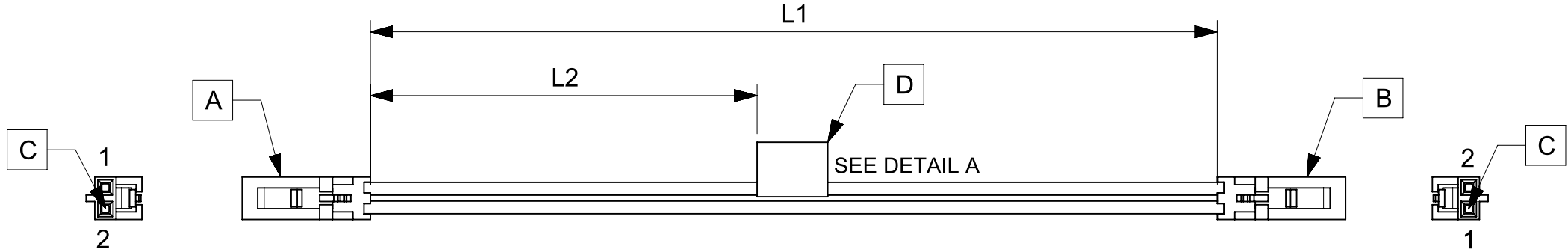


TABLE			
PART NUMBER	L1	L2	TITLE
2162701020	50±3	13 REF	SL POSITIVE LOCK R-R 2CKT 50MM Sn
2162701021	100±5	38 REF	SL POSITIVE LOCK R-R 2CKT 100MM Sn
2162701022	150±8	63 REF	SL POSITIVE LOCK R-R 2CKT 150MM Sn
2162701023	300±10	138 REF	SL POSITIVE LOCK R-R 2CKT 300MM Sn
2162701024	600±10	288 REF	SL POSITIVE LOCK R-R 2CKT 600MM Sn

NOTES

1. Cable assembly must pass 100% continuity and polarity test.
2. Connector view shown is from mating side.
3. Label text must be 2mm max. in height with Arial font.
4. Label must be wrapped in Flag type on a single cable.

MOLEX P/N
MOLEX
BATCH WK/YR

DETAIL A

REVISION			
DATE	REV	DESCRIPTION	CHANGER
2020/05/05	A	INITIAL RELEASE	ARAJU

FUNCTIONAL SYMBOLS $\frac{E}{A} = 0$ $\frac{E}{E} = 0$ $\frac{E}{P} = 0$ DIVISIONAL SYMBOLS	THIS DRAWING CONTAINS INFORMATION THAT IS PROPRIETARY TO MOLEX ELECTRONIC TECHNOLOGIES, LLC AND SHOULD NOT BE USED WITHOUT WRITTEN PERMISSION		CURRENT REV DESC:		
	DIMENSION UNITS	SCALE	EC NO: 642836		
	mm	NTS	DRWN: ARAJU 2020/05/05		
	GENERAL TOLERANCES (UNLESS SPECIFIED)		CHK'D: RDESAI01 2020/08/05		
ANGULAR TOL ± °		APPR: RDESAI01 2020/08/05		PRODUCT CUSTOMER DRAWING	
4 PLACES ±		INITIAL REVISION:		DOCUMENT NUMBER	DOC TYPE
3 PLACES ±		DRWN: ARAJU 2020/05/05		2162701020	PSD
2 PLACES ±		APPR: RDESAI01 2020/08/05		000	A
1 PLACE ±		DRAFT WHERE APPLICABLE MUST REMAIN WITHIN DIMENSIONS		MATERIAL NUMBER	CUSTOMER
0 PLACES ±		THIRD ANGLE PROJECTION	DRAWING	SEE TABLE	GENERAL MARKET
			A4-SIZE	SHEET NUMBER	1 OF 1

DOCUMENT STATUS	P1	RELEASE DATE	2020/08/05	05:06:33
-----------------	----	--------------	------------	----------