

MATERIALS AND FINISHES

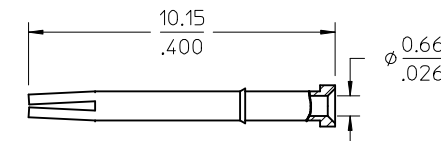
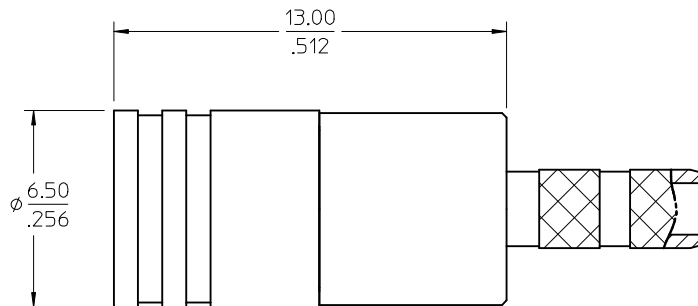
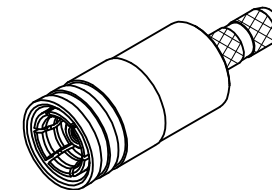
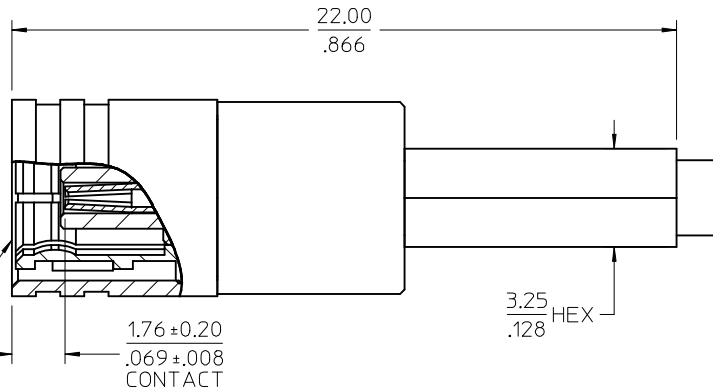
BODY, FERRULE: BRASS
PLATED GOLD

CENTER CONTACT: BERYLLIUM COPPER
PLATED GOLD

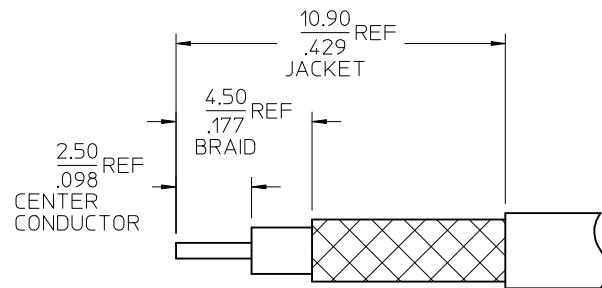
INSULATOR: TEFLON

RETAINING RING: BERYLLIUM COPPER

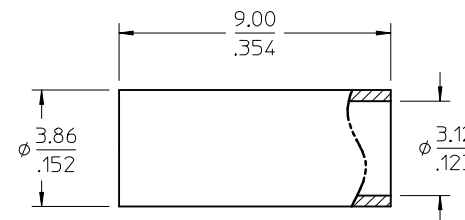
SMB PLUG
INTERFACE



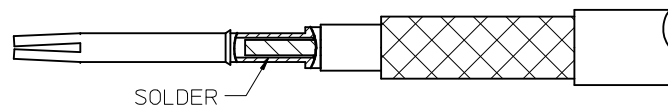
CENTER CONTACT



RECOMMENDED CABLE STRIP



FERRULE



73396-0600	SMALL TRAY PACKING
73404-2310	73100-0248, ONE PER BAG
73100-0248	TRAY
PART NO.	PACKAGING

PS-89675-3540	ELECTRO/MECH PERFORM.
SPECIFICATION	DESCRIPTION

CHG: MODIFIED ISO
VIEW. ADDED
CABLE/CONTACT VIEW

EC NO: URF-2016-0438
2015/12/09
DRWN:SSHAH
CHKD:
APPR:AROBERTSON, 2015/12/09

REV

QUALITY
SYMBOLS

GENERAL TOLERANCES
(UNLESS SPECIFIED)

	mm	INCH
4 PLACES	± .005	± .0005
3 PLACES	± .003	± .0003
2 PLACES	± .002	± .0002
1 PLACE	± .001	± .0001
ANGULAR ± 2 °		

DRAFT WHERE APPLICABLE
MUST REMAIN
WITHIN DIMENSIONS

DIMENSION STYLE MM/IN	
DRAWN BY FIELDS	DATE 1995/08/10
CHECKED BY	DATE
APPROVED BY JWIENER	DATE 2010/12/07
MATERIAL NO.	DOCUMENT NO.
SIZE C	SEE TABLE

SCALE METRIC	DESIGN UNITS METRIC	THIRD ANGLE PROJECTION
TITLE SMB PLUG STR FOR RG316 CABLE 50 OHMS SMB-PC		
MOLEX INCORPORATED		
SD-73100-0248		SHEET NO. 1 OF 1

THIS DRAWING CONTAINS INFORMATION THAT IS PROPRIETARY TO MOLEX
INCORPORATED AND SHOULD NOT BE USED WITHOUT WRITTEN PERMISSION