

SN65LVDS302 Programmable 27-Bit Serial-to-Parallel Receiver

1 Features

- Serial interface technology
- Compatible with FlatLink™3G such as SN65LVDS301
- Supports video interfaces up to 24-bit RGB data and 3 control bits received over 1, 2 or 3 SubLVDS differential lines
- SubLVDS differential voltage levels
- Up to 1.755-Gbps Data Throughput
- Three operating modes to conserve power
 - Active mode QVGA: 17 mW
 - Typical shutdown: 0.7 μW
 - Typical standby mode: 27 μW Typical
- Bus-swap function for PCB-layout flexibility
- ESD rating > 4 kV (HBM)
- Pixel clock range of 4 MHz to 65 MHz
- Failsafe on all CMOS inputs
- Packaged in 5-mm × 5-mm nFBGA with 0.5-mm ball pitch
- Very low EMI meets SAE J1752/3 'Kh'-spec

2 Applications

- [Wearables \(non-medical\)](#)
- [Tablets](#)
- [Mobile phones](#)
- [Portable electronics](#)
- [Gaming](#)
- [Retail automation & payment](#)
- [Building automation](#)

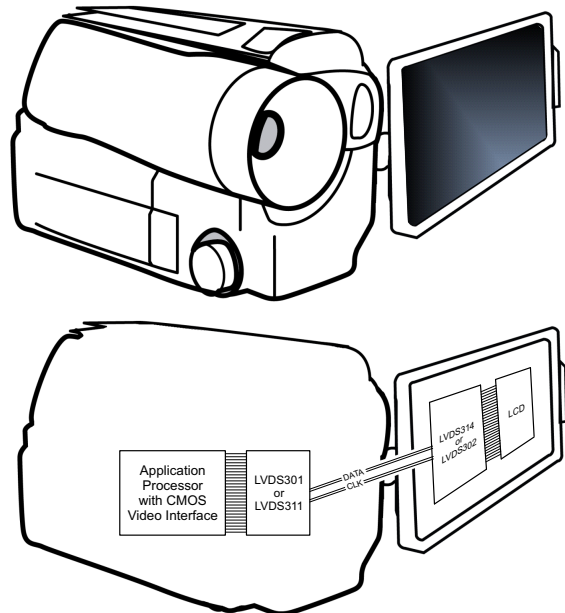
3 Description

The SN65LVDS302 receiver de-serializes FlatLink™3G compliant serial input data to 27 parallel data outputs. The SN65LVDS302 receiver contains one shift register to load 30 bits from 1, 2 or 3 serial inputs and latches the 24 pixel bits and 3 control bits out to the parallel CMOS outputs after checking the parity bit. If the parity check confirms correct parity, the Channel Parity Error (CPE) output remains low. If a parity error is detected, the CPE output generates a high pulse while the data output bus disregards the newly-received pixel. Instead, the last data word is held on the output bus for another clock cycle.

Device Information (1)

| PART NUMBER | PACKAGE | BODY SIZE (NOM) |
|-------------|------------|-------------------|
| SN65LVDS302 | nFBGA (80) | 5.00 mm × 5.00 mm |

- (1) For all available packages, see the orderable addendum at the end of the data sheet.



Implementation Example



Table of Contents

| | | | |
|--|----|--|----|
| 1 Features | 1 | 7.3 Maximum Power Consumption Test Pattern..... | 21 |
| 2 Applications | 1 | 7.4 Output Skew Pulse Position and Jitter Performance..... | 22 |
| 3 Description | 1 | 8 Detailed Description | 25 |
| 4 Revision History | 2 | 8.1 Overview..... | 25 |
| 5 Pin Configuration and Functions | 3 | 8.2 Functional Block Diagram..... | 26 |
| 6 Specifications | 6 | 8.3 Feature Description..... | 27 |
| 6.1 Absolute Maximum Ratings..... | 6 | 8.4 Device Functional Modes..... | 28 |
| 6.2 ESD Ratings..... | 6 | 9 Application and Implementation | 32 |
| 6.3 Recommended Operating Conditions..... | 6 | 9.1 Application Information..... | 32 |
| 6.4 Thermal Information..... | 7 | 9.2 Typical Applications..... | 36 |
| 6.5 Electrical Characteristics..... | 8 | 10 Power Supply Recommendations | 39 |
| 6.6 Input Electrical Characteristics..... | 9 | 11 Layout | 40 |
| 6.7 Output Electrical Characteristics..... | 9 | 11.1 Layout Guidelines..... | 40 |
| 6.8 Timing Requirements..... | 10 | 12 Device and Documentation Support | 41 |
| 6.9 Switching Characteristics..... | 10 | 12.1 Community Resource..... | 41 |
| 6.10 Device Power Dissipation..... | 11 | 12.2 Trademarks..... | 41 |
| 7 Parameter Measurement Information | 16 | 13 Mechanical, Packaging, and Orderable Information | 42 |
| 7.1 Power Consumption Tests..... | 20 | | |
| 7.2 Typical IC Power Consumption Test Pattern..... | 20 | | |

4 Revision History

NOTE: Page numbers for previous revisions may differ from page numbers in the current version.

| Changes from Revision D (May 2016) to Revision E (October 2020) | Page |
|---|-------------|
| • NOTE: The device in the MicroStar Jr. BGA packaging were redesigned using a laminate nFBGA package. This nFBGA package offers datasheet-equivalent electrical performance. It is also footprint equivalent to the MicroStar Jr. BGA. The new package designator in place of the discontinued package designator will be updated throughout the datasheet..... | 1 |
| • Changed u*jr ZQE to nFBGA ZXH..... | 1 |
| • Changed u*jr ZQE to nFBGA ZXH..... | 3 |
| • Changed u*jr ZQE to nFBGA ZXH, updated thermal information..... | 7 |
| • Correct SN65LVDS822 to SN65LVDS302..... | 39 |

| Changes from Revision C (August 2012) to Revision D (May 2016) | Page |
|---|-------------|
| • Added <i>ESD Ratings</i> table, <i>Feature Description</i> section, <i>Device Functional Modes</i> section, <i>Application and Implementation</i> section, <i>Power Supply Recommendations</i> section, <i>Layout</i> section, <i>Device and Documentation Support</i> section, and <i>Mechanical, Packaging, and Orderable Information</i> section | 1 |

5 Pin Configuration and Functions

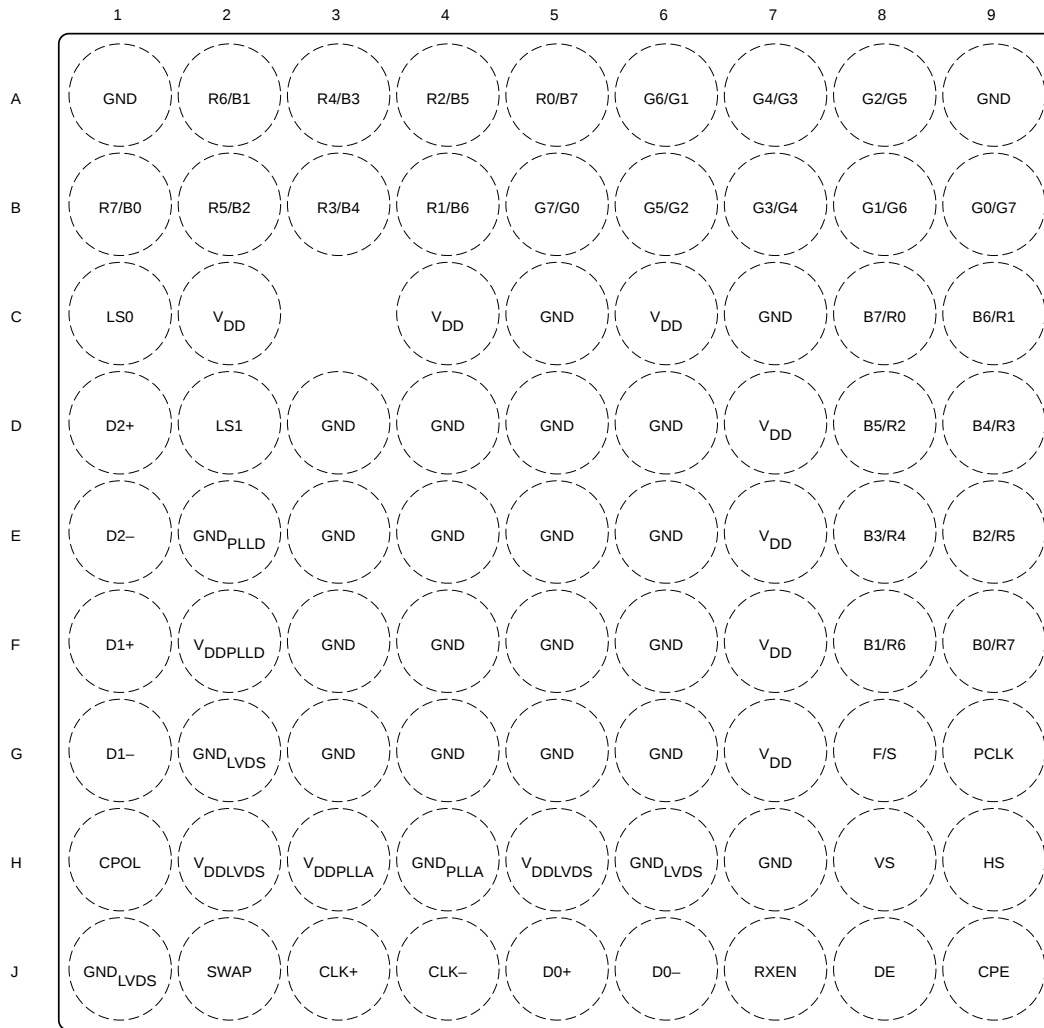


Figure 5-1. ZXH Package 80-Pin nFBGA Top View

Table 5-1. Pin Functions

| PIN | | | DESCRIPTION |
|----------|---------|----------|---|
| NAME | NO. | I/O | |
| CMOS | | | |
| B0 to B7 | See (1) | CMOS Out | Blue pixel data |
| G0 to G7 | See (1) | CMOS Out | Green pixel data |
| R0 to R7 | See (1) | CMOS Out | Red pixel data |
| CPE | J9 | CMOS Out | Channel parity error This output indicates the detection of a parity error by generating an output high-pulse for half of a PCLK clock cycle; this allows counting parity errors with a simple counter. 0: no error high-pulse: bit error detected |

Table 5-1. Pin Functions (continued)

| PIN | | | DESCRIPTION |
|----------------------|--|--------------|---|
| NAME | NO. | I/O | |
| CPOL | H1 | CMOS In | Output clock polarity selection: 0: rising edge clocking 1: falling edge clocking |
| DE | J8 | CMOS Out | Data Enable |
| F/S | G8 | CMOS In | CMOS bus rise time select: 1: fast output rise time 0: slow output rise time |
| HS | H9 | CMOS Out | Horizontal sync |
| LS0 | C1 | CMOS In | Link select: determines active SubLVDS Data Links and PLL Range) (see Table 8-1) |
| LS1 | D2 | | |
| PCLK | G9 | CMOS Out | Output Pixel Clock; rising or falling clock polarity is selected by control input CPOL |
| RXEN | J7 | CMOS In | Disables the CMOS Drivers and turns off the PLL, putting device in shutdown mode. ⁽²⁾ 1: Receiver enabled 0: Receiver disabled (shutdown) |
| SWAP | J2 | CMOS In | Bus swap: swaps the bus pins to allow device placement on top or bottom of PCB. See pinout drawing and Table 5-2 for pin assignments. 0: data output from R7 to B0 1: data output from B0 to R7 |
| VS | H8 | CMOS Out | Vertical sync |
| SUBLVDS | | | |
| CLK+, CLK– | J3, J4 | SubLVDS In | SubLVDS input pixel clock (polarity is fixed) |
| D0+, D0– | J5, J6 | SubLVDS In | SubLVDS data link (active during normal operation) |
| D1+, D1– | F1, G1 | SubLVDS In | SubLVDS data link (active during normal operation when LS0 = high and LS1 = low, or LS0 = low and LS1 = high; high impedance if LS0 = LS1 = low); input can be left open if unused. |
| D2+, D2– | D1, E1 | SubLVDS In | SubLVDS data link (active during normal operation when LS0 = low and LS1 = high, high-impedance when LS1 = low); input can be left open if unused. |
| POWER SUPPLY | | | |
| V _{DD} | C2, C4, C6, D7 to G7 | Power Supply | Supply voltage |
| V _{DDL} VDS | H2, H5 | Power Supply | SubLVDS I/O supply voltage |
| V _{DD} PLLA | H3 | Power Supply | PLL analog supply voltage |
| V _{DD} PLLD | F2 | Power Supply | PLL digital supply voltage |
| GND | A1, A9, C5, C7, D3 to D6, E3 to E6, F3 to F6, G3 to G6, H7 | Ground | Supply ground |
| GND _{LVDS} | G2, H6, J1 | Ground | SubLVDS ground |
| GND _{PLLA} | H4 | Ground | PLL analog ground |

Table 5-1. Pin Functions (continued)

| PIN | | | DESCRIPTION |
|----------------------|-----|--------|--------------------|
| NAME | NO. | I/O | |
| GND _{PLL} D | E2 | Ground | PLL digital ground |

- (1) Pin assignment depends on SWAP pin setting. Swappable pins are detailed in [Table 5-2](#).
- (2) RXEN input incorporates glitch suppression logic to avoid unwanted switching. The input must be pulled low for longer than 10 μ s continuously to force the receiver to enter Shutdown. The input must be pulled high for at least 10 μ s continuously to activate the receiver. An input pulse shorter than 5 μ s is interpreted as glitch and becomes ignored. At power up, the receiver is enabled immediately if RXEN = H and disabled if RXEN = L.

Table 5-2. Swappable Pins

| SIGNAL | SWAP ⁽¹⁾ | PIN | SIGNAL | SWAP ⁽¹⁾ | PIN | SIGNAL | SWAP ⁽¹⁾ | PIN |
|--------|---------------------|-----|--------|---------------------|-----|--------|---------------------|-----|
| B0 | L | F9 | G0 | L | B9 | R0 | L | A5 |
| | H | B1 | | H | B5 | | H | C8 |
| B1 | L | F8 | G1 | L | B8 | R1 | L | B4 |
| | H | A2 | | H | A6 | | H | C9 |
| B2 | L | E9 | G2 | L | A8 | R2 | L | A4 |
| | H | B2 | | H | B6 | | H | D8 |
| B3 | L | E8 | G3 | L | B7 | R3 | L | B3 |
| | H | A3 | | H | A7 | | H | D9 |
| B4 | L | D9 | G4 | L | A7 | R4 | L | A3 |
| | H | B3 | | H | B7 | | H | E8 |
| B5 | L | D8 | G5 | L | B6 | R5 | L | B2 |
| | H | A4 | | H | A8 | | H | E9 |
| B6 | L | C9 | G6 | L | A6 | R6 | L | A2 |
| | H | B4 | | H | B8 | | H | F8 |
| B7 | L | C8 | G7 | L | B5 | R7 | L | B1 |
| | H | A5 | | H | B9 | | H | F9 |

- (1) The SWAP pin is either set to GND (L) or V_{DD} (H).

6 Specifications

6.1 Absolute Maximum Ratings

over operating free-air temperature range (unless otherwise noted)⁽¹⁾

| | | MIN | MAX | UNIT |
|---|---|---------|------------------|------|
| Supply voltage range | $V_{DD}^{(2)}$, V_{DDPLLA} , V_{DDPLLD} , V_{DDLVDs} | -0.3 | 2.175 | V |
| Voltage range at any input or output terminal | When $V_{DDx} > 0$ V | -0.5 | 2.175 | V |
| | When $V_{DDx} \leq 0$ V | -0.5 | $V_{DD} + 2.175$ | |
| Output current, I_O | | ± 5 | | mA |
| Storage temperature, T_{stg} | | -55 | 150 | °C |

- (1) Stresses beyond those listed under *Absolute Maximum Ratings* may cause permanent damage to the device. These are stress ratings only, which do not imply functional operation of the device at these or any other conditions beyond those indicated under *Recommended Operating Conditions*. Exposure to absolute-maximum-rated conditions for extended periods may affect device reliability.
- (2) All voltage values are with respect to the GND terminals

6.2 ESD Ratings

| | | VALUE | UNIT |
|-------------------------------------|--|------------|------|
| $V_{(ESD)}$ Electrostatic discharge | Human-body model (HBM), per ANSI/ESDA/JEDEC JS-001 ⁽¹⁾ | ± 4000 | V |
| | Charged-device model (CDM), per JEDEC specification JESD22-C101 ⁽²⁾ | ± 1500 | |
| | Machine model | ± 200 | |

- (1) JEDEC document JEP155 states that 500-V HBM allows safe manufacturing with a standard ESD control process.
- (2) JEDEC document JEP157 states that 250-V CDM allows safe manufacturing with a standard ESD control process.

6.3 Recommended Operating Conditions

see ⁽¹⁾

| | | MIN | NOM | MAX | UNIT |
|---|---|------|-----|------|------|
| V_{DD} | Supply voltages | 1.65 | 1.8 | 1.95 | V |
| V_{DDPLLA} | | | | | |
| V_{DDPLLD} | | | | | |
| V_{DDLVDs} | | | | | |
| $V_{DDn(PP)}$ Supply voltage noise magnitude 50 MHz (all supplies) | Test set-up see Figure 7-1 | | | | mV |
| | $f_{CLK} \leq 50$ MHz; $f(\text{noise}) = 1$ Hz to 2 GHz | | | 100 | |
| | $f_{CLK} > 50$ MHz; $f(\text{noise}) = 1$ Hz to 1 MHz | | | 100 | |
| | $f_{CLK} > 50$ MHz; $f(\text{noise}) > 1$ MHz | | | 40 | |
| T_A Operating free-air temperature | | -40 | | 85 | °C |
| CLK+ and CLK- | | | | | |
| $f_{CLK\pm}$ Input Pixel clock frequency | 1-Channel receive mode, see Figure 8-4 | | 4 | 15 | MHz |
| | 2-Channel receive mode, see Figure 8-5 | | 8 | 30 | |
| | 3-Channel receive mode, see Figure 8-6 | | 20 | 65 | |
| | Standby mode ⁽²⁾ , see Figure 7-10 | | | 500 | kHz |
| t_{DUTCLK} CLK Input Duty Cycle | | 35% | | 65% | |

see (1)

| | | MIN | NOM | MAX | UNIT | |
|---|---|--|-----|-------------------------|------|---------|
| D0+, D0-, D1+, D1-, D2+, D2-, CLK+, and CLK- | | | | | | |
| $ V_{ID} $ | Magnitude of differential input voltage | $ V_{D0+} - V_{D0-} , V_{D1+} - V_{D1-} , V_{D2+} - V_{D2-} , V_{CLK+} - V_{CLK-} $ during normal operation | | 70 | 200 | mV |
| V_{ICM} | Input voltage common mode range | Receive or Acquire mode | | 0.6 | 1.2 | V |
| | | Stand-by mode | | $0.9 \times V_{DDLVD5}$ | | |
| ΔV_{ICM} | Input voltage common mode variation between all SubLVDS inputs | $V_{ICM(n)} - V_{ICM(m)}$ with $n = \{D0, D1, D2, \text{ or } CLK\}$ and $m = \{D0, D1, D2, \text{ or } CLK\}$ | | -100 | 100 | mV |
| ΔV_{ID} | Differential input voltage amplitude variation between all SubLVDS inputs | $V_{ID(n)} - V_{ID(m)}$ with $n = \{D0, D1, D2, \text{ or } CLK\}$ and $m = \{D0, D1, D2, \text{ or } CLK\}$ | | -10% | 10% | |
| $t_{R/F}$ | Input rise and fall time | RXEN at VDD; see figure 10 | | | 800 | ps |
| $\Delta t_{R/F}$ | Input rise or fall time mismatch between all SubLVDS inputs | $t_{R(n)} - t_{R(m)}$ and $t_{F(n)} - t_{F(m)}$ with $n = \{D0, D1, D2, \text{ or } CLK\}$ and $m = \{D0, D1, D2, \text{ or } CLK\}$ | | -100 | 100 | ps |
| LS0, LS1, CPOL, SWAP, RXEN, F/S | | | | | | |
| V_{ICMOSH} | High-level input voltage | $0.7 \times V_{DD}$ | | V_{DD} | | V |
| V_{ICMOSL} | Low-level input voltage | 0 | | $0.3 \times V_{DD}$ | | V |
| t_{inRXEN} | RXEN input pulse duration | 10 | | | | μs |
| R[7:0], G[7:0], B[7:0], VS, HS, PCLK, CPE | | | | | | |
| C_L | Output load capacitance | 10 | | | | pF |

- (1) Unused single-ended inputs must be held high or low to prevent them from floating.
- (2) PCLK input frequencies lower than 500 kHz forces the SN65LVDS302 into standby mode. Input frequencies from 500 kHz to 3 MHz may or may not activate the SN65LVDS302. Input frequencies beyond 3 MHz activate the SN65LVDS302. TI recommends against input frequencies from 500 kHz to 4 MHz, which can cause PLL malfunction.

6.4 Thermal Information

| THERMAL METRIC ⁽¹⁾ | SN65LVDS302 | | UNIT |
|-------------------------------|--|--|------|
| | ZXH (nFBGA) | | |
| | 80 PINS | | |
| $R_{\theta JA}$ | Junction-to-ambient thermal resistance | | °C/W |
| $R_{\theta JC(top)}$ | Junction-to-case (top) thermal resistance | | °C/W |
| $R_{\theta JB}$ | Junction-to-board thermal resistance | | °C/W |
| ψ_{JT} | Junction-to-top characterization parameter | | °C/W |
| ψ_{JB} | Junction-to-board characterization parameter | | °C/W |

- (1) For more information about traditional and new thermal metrics, see the *Semiconductor and IC Package Thermal Metrics* application report, [SPRA953](#).

6.5 Electrical Characteristics

over recommended operating conditions (unless otherwise noted)

| PARAMETER | | TEST CONDITIONS | | MIN | TYP ⁽¹⁾ | MAX | UNIT | |
|--|---|--|--|---------------------|---------------------|------|------|----|
| I_{DD} | RMS supply current | 1ChM | Alternating 1010 Test pattern (see Table 7-5). All CMOS outputs terminated with 10 pF, F/S and RXEN at V_{DD} . $V_{IH} = V_{DD}$, $V_{IL} = 0$ V, $V_{DD} = V_{DDPLLA} = V_{DDPLLD} = V_{DDLVDs}$ | $f_{PCLK} = 4$ MHz | 9.8 | 14 | mA | |
| | | | | $f_{PCLK} = 6$ MHz | 11.7 | 15.9 | | |
| | | | | $f_{PCLK} = 15$ MHz | 19.3 | 25 | | |
| | | 1ChM | Typical power test pattern (see Table 7-2). $V_{ID} = 70$ mV. All CMOS outputs terminated with 10 pF, F/S at GND, and RXEN at V_{DD} . $V_{IH} = V_{DD}$, $V_{IL} = 0$ V, $V_{DD} = V_{DDPLLA} = V_{DDPLLD} = V_{DDLVDs}$ | $f_{PCLK} = 4$ MHz | 4.7 | | mA | |
| | | | | $f_{PCLK} = 6$ MHz | 6 | | | |
| | | | | $f_{PCLK} = 15$ MHz | 13.2 | | | |
| | 2ChM | Alternating 1010 Test pattern (see Table 7-5). All CMOS outputs terminated with 10 pF, F/S and RXEN at V_{DD} . $V_{IH} = V_{DD}$, $V_{IL} = 0$ V, $V_{DD} = V_{DDPLLA} = V_{DDPLLD} = V_{DDLVDs}$ | | $f_{PCLK} = 8$ MHz | 14.3 | 19.4 | mA | |
| | | | | $f_{PCLK} = 22$ MHz | 25 | 33 | | |
| | | | | $f_{PCLK} = 30$ MHz | 26.8 | 37 | | |
| | | 2ChM | Typical power test pattern (see Table 7-3). $V_{ID} = 70$ mV. All CMOS outputs terminated with 10 pF, F/S at GND, and RXEN at V_{DD} . $V_{IH} = V_{DD}$, $V_{IL} = 0$ V, $V_{DD} = V_{DDPLLA} = V_{DDPLLD} = V_{DDLVDs}$ | | $f_{PCLK} = 8$ MHz | 6.4 | | mA |
| | | | | | $f_{PCLK} = 22$ MHz | 13.7 | | |
| | | | | | $f_{PCLK} = 30$ MHz | 18.3 | | |
| 3ChM | Alternating 1010 Test pattern (see Table 7-5). All CMOS outputs terminated with 10 pF, F/S and RXEN at V_{DD} . $V_{IH} = V_{DD}$, $V_{IL} = 0$ V, $V_{DD} = V_{DDPLLA} = V_{DDPLLD} = V_{DDLVDs}$ | | $f_{PCLK} = 20$ MHz | 17.1 | 27 | mA | | |
| | | | $f_{PCLK} = 65$ MHz | 60.8 | 68 | | | |
| | | | $f_{PCLK} = 65$ MHz | 22.2 | | | | |
| | 3ChM | Typical power test pattern (see Table 7-4). $V_{ID} = 70$ mV. All CMOS outputs terminated with 10 pF, F/S at GND, and RXEN at V_{DD} . $V_{IH} = V_{DD}$, $V_{IL} = 0$ V, $V_{DD} = V_{DDPLLA} = V_{DDPLLD} = V_{DDLVDs}$ | | $f_{PCLK} = 20$ MHz | 8.6 | | mA | |
| | | | | $f_{PCLK} = 65$ MHz | 22.2 | | | |
| | | | | $f_{PCLK} = 65$ MHz | 22.2 | | | |
| CLK and D[0:2] inputs are left open. All control inputs held static high or low. All CMOS outputs terminated with 10 pF. $V_{IH} = V_{DD}$, $V_{IL} = 0$ V, $V_{DD} = V_{DDPLLA} = V_{DDPLLD} = V_{DDLVDs}$ | | Standby mode; RXEN = V_{IH} | 15 | 100 | μ A | | | |
| | | Shutdown mode; RXEN = V_{IL} | 0.4 | 10 | μ A | | | |

(1) All typical values are at 25°C and with 1.8-V supply unless otherwise noted.

6.6 Input Electrical Characteristics

over operating free-air temperature range (unless otherwise noted)

| PARAMETER | | TEST CONDITIONS | MIN | TYP ⁽¹⁾ | MAX | UNIT |
|---|---|--|---------------------|-------------------------|---------------------|---------------|
| D0+, D0-, D1+, D1-, D2+, D2-, CLK+, and CLK- | | | | | | |
| V_{thstby} | Input voltage common mode threshold to switch between receive and acquire mode and standby mode | RXEN at V_{DD} | 1.3 | $0.9 \times V_{DDLVDs}$ | | V |
| V_{THL} | Low-level differential input voltage threshold | $V_{D0+} - V_{D0-}, V_{D1+} - V_{D1-}, V_{D2+} - V_{D2-}, V_{CLK+} - V_{CLK-}$ | -40 | | | mV |
| V_{THH} | High-level differential input voltage threshold | $V_{D0+} - V_{D0-}, V_{D1+} - V_{D1-}, V_{D2+} - V_{D2-}, V_{CLK+} - V_{CLK-}$ | | | 40 | mV |
| I_{I+}, I_{I-} | Input leakage current | $V_{DD} = 1.95\text{ V}, V_{I+} = V_{I-}, V_I = 0.4\text{ V}$ and $V_I = 1.5\text{ V}$ | | | 75 | μA |
| I_{IOFF} | Power-off input current | $V_{DD} = \text{GND}; V_I = 1.5\text{ V}$ | | | -75 | μA |
| R_{ID} | Differential input termination resistor value | | 78 | 100 | 122 | Ω |
| C_{IN} | Input capacitance | Measured between input terminal and GND | | 1 | | pF |
| ΔC_{IN} | Input capacitance variation | Within one signal pair | | | 0.2 | pF |
| | | Between all signals | | | 1 | |
| R_{BBDC} | Pull-up resistor for standby detection | | 21 | 30 | 39 | k Ω |
| LS0, LS1, CPOL, SWAP, RXEN, F/S | | | | | | |
| V_{IK} | Input clamp voltage | $I_I = -18\text{ mA}, V_{DD} = V_{DD}(\text{min})$ | | | -1.2 | V |
| I_{ICMOS} | Input current ⁽²⁾ | $0\text{ V} \leq V_{DD} \leq 1.95\text{ V}; V_I = \{\text{GND}, 1.95\text{ V}\}$ | | | 100 | nA |
| C_{IN} | Input capacitance | | | 2 | | pF |
| I_{IH} | High-level input current | $V_{IN} = 0.7 \times V_{DD}$ | -200 | | 200 | nA |
| I_{IL} | Low-level input current | $V_{IN} = 0.3 \times V_{DD}$ | -200 | | 200 | nA |
| V_{IH} | High-level input voltage | | $0.7 \times V_{DD}$ | | V_{DD} | V |
| V_{IL} | Low-level input voltage | | 0 | | $0.3 \times V_{DD}$ | V |

(1) All typical values are at 25°C and with 1.8-V supply unless otherwise noted.

(2) Do not leave any CMOS Input unconnected or floating to minimize leakage currents. Every input must be connected to a valid logic level V_{IH} or V_{OL} while power is supplied to V_{DD} .

6.7 Output Electrical Characteristics

over operating free-air temperature range (unless otherwise noted)

| PARAMETER | | TEST CONDITIONS | MIN | TYP | MAX | UNIT |
|--|---------------------------|--|---------------------|-----|---------------------|---------------|
| R[0:7], G[0:7], B[0:7], VS, HS, PCLK, CPE | | | | | | |
| V_{OH} | High-level output current | 1-ChM, F/S = L, $I_{OH} = -250\ \mu\text{A}$ | $0.8 \times V_{DD}$ | | V_{DD} | V |
| | | 2- or 3-ChM, F/S = L, $I_{OH} = -500\ \mu\text{A}$ | | | | |
| | | 1-ChM, F/S = H, $I_{OH} = -500\ \mu\text{A}$ | | | | |
| | | 2- or 3-ChM, F/S = H, $I_{OH} = -2\text{ mA}$ | | | | |
| V_{OL} | Low-level output current | 1-ChM, F/S = L, $I_{OL} = 250\ \mu\text{A}$ | 0 | | $0.2 \times V_{DD}$ | V |
| | | 2- or 3-ChM, F/S = L, $I_{OL} = 500\ \mu\text{A}$ | | | | |
| | | 1-ChM, F/S = H, $I_{OL} = 500\ \mu\text{A}$ | | | | |
| | | 2- or 3-ChM, F/S = H, $I_{OL} = 2\text{ mA}$ | | | | |
| I_{OH} | High-level output current | 1-ChM, F/S = L | -250 | | | μA |
| | | 2- or 3-ChM, F/S = L; 1-ChM, F/S = H | -500 | | | |
| | | 2- or 3-ChM, F/S = H | -2000 | | | |

over operating free-air temperature range (unless otherwise noted)

| PARAMETER | TEST CONDITIONS | MIN | TYP | MAX | UNIT |
|-----------------------------------|--------------------------------------|-----|-----|------|---------------|
| I_{OL} Low-level output current | 1-ChM, F/S = L | | | 250 | μA |
| | 2- or 3-ChM, F/S = L; 1-ChM, F/S = H | | | 500 | |
| | 2- or 3-ChM, F/S = H | | | 2000 | |

6.8 Timing Requirements

| PARAMETER | TEST CONDITIONS | MIN | UNIT |
|--|---|--|---------------------------------|
| t_{RSKMx} (2) (3) Receiver input skew margin(1) (see Figure 9-2) | 1ChM: $x = 0.29$, $f_{PCLK} = 15\text{ MHz}$, RXEN at V_{DD} , $V_{IH} = V_{DD}$, $V_{IL} = \text{GND}$, $R_L = 100\ \Omega$, test setup as in Figure 7-2, test pattern as in Table 7-7 | $f_{CLK} = 15\text{ MHz}$ (4) | 630 |
| | | $f_{CLK} = 4\text{ MHz to }15\text{ MHz}$ (5) | $1 / (60 \times f_{CLK}) - 480$ |
| | 2ChM: $x = 0.14$, $f_{PCLK} = 30\text{ MHz}$, RXEN at V_{DD} , $V_{IH} = V_{DD}$, $V_{IL} = \text{GND}$, $R_L = 100\ \Omega$, test setup as in Figure 7-2, test pattern as in Table 7-8 | $f_{CLK} = 30\text{ MHz}$ (4) | 630 |
| | | $f_{CLK} = 8\text{ MHz to }30\text{ MHz}$ (5) | $1 / (30 \times f_{CLK}) - 480$ |
| | 3ChM: RXEN at V_{DD} , $V_{IH} = V_{DD}$, $V_{IL} = \text{GND}$, test setup as in Figure 7-2, test pattern as in Table 7-9 | $f_{CLK} = 65\text{ MHz}$ (4) | 360 |
| | | $f_{CLK} = 20\text{ MHz to }65\text{ MHz}$ (5) | $1 / (20 \times f_{CLK}) - 410$ |

- (1) This includes the receiver internal set-up and hold time uncertainty, all PLL related high-frequency random and deterministic jitter components that impact the jitter budget, ISI and duty cycle distortion from the front end receiver, and the skew from CLK to data D0, D1, and D2; The pulse position minimum and maximum variation is given with a bit error rate target of 10^{-12} ; Measurements of the total jitter are taken over a sample amount of $> 10^{-12}$ samples.
- (2) Receiver Input Skew Margin (t_{RSKM}) is the timing margin available for transmitter output pulse position (t_{PPoS}), interconnect skew, and interconnect inter-symbol interference. t_{RSKM} represents the remainder of the serial bit time not taken up by the receiver strobe uncertainty; The t_{RSKM} assumes a bit error rate better than 10^{-12} .
- (3) t_{RSKM} is indirectly proportional to the internal set-up and hold time uncertainty, ISI and duty cycle distortion from the front end receiver, the skew mismatch from CLK to data D0, D1, and D2, as well as the PLL cycle-to-cycle jitter.
- (4) The Minimum and Maximum Limits are based on statistical analysis of the device performance over process, voltage, and temp ranges.
- (5) These Minimum and Maximum Limits are simulated only.

6.9 Switching Characteristics

over recommended operating conditions (unless otherwise noted)

| PARAMETER | TEST CONDITIONS | MIN | TYP(1) | MAX | UNIT |
|--|--|-------------------------|--------|-----|------|
| D0+, D0-, D1+, D1-, D2+, D2-, CLK+, and CLK- | | | | | |
| $t_{R/F}$ Input rise and fall time | RXEN at V_{DD} ; see Figure 7-4 | | | 800 | ps |
| $\Delta t_{R/F}$ Input rise or fall time mismatch between all SubLVDS inputs | $t_R(n) - t_R(m)$ and $t_F(n) - t_F(m)$ with $n = \{D0, D1, D2, \text{ or CLK}\}$ and $m = \{D0, D1, D2, \text{ or CLK}\}$ | -100 | | 100 | ps |
| R[7:0], G[7:0], B[7:0], VS, HS, PCLK, CPE | | | | | |
| $t_{R/F}$ Rise and fall time 20% to 80% of V_{DD} (2) | $C_L = 10\text{ pF}$ (3) (see Figure 7-3) | 1-channel mode, F/S = L | 8 | 16 | ns |
| | | 2-channel mode, F/S = L | 4 | 8 | |
| | | 3-channel mode, F/S = L | 4 | 8 | |
| | | 1-channel mode, F/S = H | 4 | 8 | |
| | | 2-channel mode, F/S = H | 1 | 2 | |
| | | 3-channel mode, F/S = H | 1 | 2 | |
| t_{OUTP} PCLK output duty cycle | 1-channel and 3-channel mode | 45% | 50% | 55% | |
| | CPOL = V_{IL} , 2-channel mode | 48% | 53% | 59% | |
| | CPOL = V_{IH} , 2-channel mode | 41% | 47% | 52% | |
| t_{OSK} Output skew from PCLK to R[0:7], G[0:7], B[0:7], HS, VS, and DE | see Figure 7-3 | -500 | | 500 | ps |
| INPUT TO OUTPUT RESPONSE TIME | | | | | |

over recommended operating conditions (unless otherwise noted)

| PARAMETER | TEST CONDITIONS | MIN | TYP ⁽¹⁾ | MAX | UNIT |
|---------------------|--|-----------------------------------|---------------------------|-------------------------|------|
| t _{PD(L)} | Propagation delay time from CLK+ input to PCLK output RXEN at V _{DD} , V _{IH} = V _{DD} , V _{IL} = GND, C _L = 10 pF, see Figure 7-8 | 1.4 / f _{PCLK} | 1.9 / f _{PCLK} | 2.5 / f _{PCLK} | s |
| t _{GS} | RXEN glitch suppression pulse width ⁽⁴⁾ V _{IH} = V _{DD} , V _{IL} = GND, RXEN toggles from V _{IL} to V _{IH} ; see Figure 7-9 and Figure 7-10 | | | 3.8 | μs |
| t _{pwrup} | Enable time from power down (↑RXEN) Time from RXEN pulled high to data outputs enabled and outputs valid data; see Figure 7-10 | | | 2 | ms |
| t _{pwrdn} | Disable time from active mode (↓RXEN) RXEN is pulled low during receive mode; time measurement until all outputs held static: R[0:7] = G[0:7] = B[0:7] = VS = HS = high, DE = PCLK = low and PLL is Shutdown; see Figure 7-10 | | | 11 | μs |
| t _{wakeup} | Enable time from Standby (↑↓CLK) RXEN at V _{DD} ; device is in standby; time measurement from CLK input starts switching to PCLK and data outputs enabled and outputting valid data; see Figure 7-11 | | | 2 | ms |
| t _{sleep} | Disable time from active mode (CLK transitions to high-impedance) RXEN at V _{DD} ; device is receiving data; time measurement from CLK input signal stops (input open or input common mode VICM exceeds threshold voltage V _{thstby}) until all outputs held static: R[0:7] = G[0:7] = B[0:7] = VS = HS = high, DE = PCLK = low and PLL is Shutdown; see Figure 7-11 | | | 3 | μs |
| f _{BW} | PLL bandwidth ⁽⁵⁾ Tested from CLK input to PCLK output | 2-ChM; f _{PCLK} = 22 MHz | 0.087 × f _{PCLK} | | MHz |
| | | 3-ChM; f _{PCLK} = 65 MHz | 0.075 × f _{PCLK} | | |

- (1) All typical values are at 25°C and with 1.8-V supply unless otherwise noted.
- (2) t_{R/F} depends on the F/S setting and the capacitive load connected to each output. Some application information of how to calculate t_{R/F} based on the output load and how to estimate the timing budget to interconnect to an LCD driver are provided in the application section near the end of this data sheet.
- (3) The output rise and fall time is optimized for an output load of 10 pF. The rise and fall time can be adjusted by changing the output load capacitance.
- (4) The RXEN input incorporates a glitch-suppression logic to disregard short input pulses. t_{GS} is the duration of either a high-to-low or low-to-high transition that is suppressed.
- (5) When using the SN65LVDS302 receiver in conjunction with the SN65LVDS301 transmitter in one link, the PLL bandwidth of the SN65LVDS302 receiver always exceed the bandwidth of the SN65LVDS301 transmit PLL. This ensures stable PLL tracking under all operating conditions and maximizes the receiver skew margin.

6.10 Device Power Dissipation

| PARAMETER | TEST CONDITIONS | TYP | MAX | UNIT | |
|----------------|---|---------------------------|------|-------|----|
| P _D | V _{DDx} = 1.8 V, T _A = 25°C, all outputs terminated with 10 pF | f _{CLK} = 4 MHz | 16.8 | mW | |
| | | f _{CLK} = 65 MHz | 64.7 | | |
| | V _{DDx} = 1.95 V, T _A = -40°C, all outputs terminated with 10 pF | f _{CLK} = 4 MHz | | 27.4 | mW |
| | | f _{CLK} = 65 MHz | | 128.8 | |

Typical Characteristics

Some of the plots in this section show more than one curve representing various device pin relationships. Taken together, they represent a working range for the tested parameter.

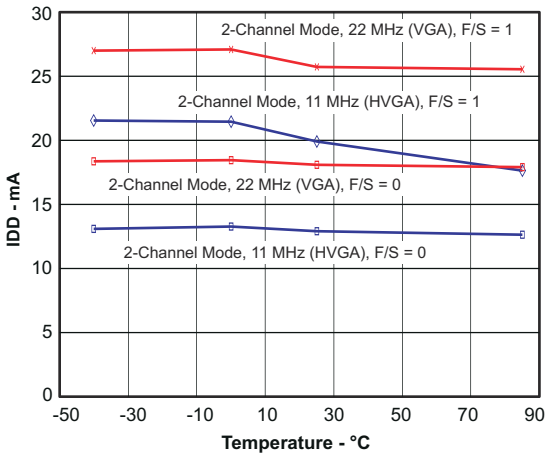


Figure 6-1. Supply Current vs Temperature

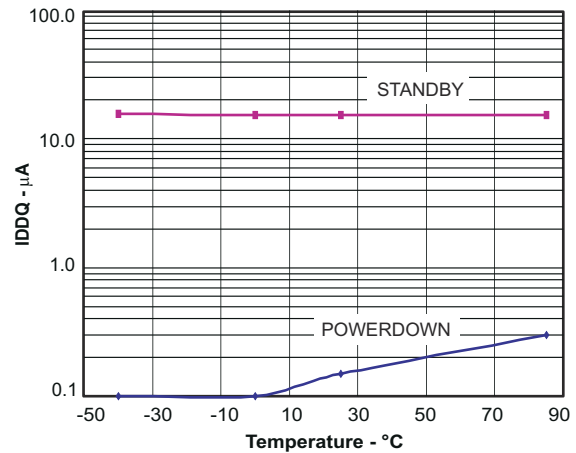


Figure 6-2. Quiescent Supply Current vs Temperature

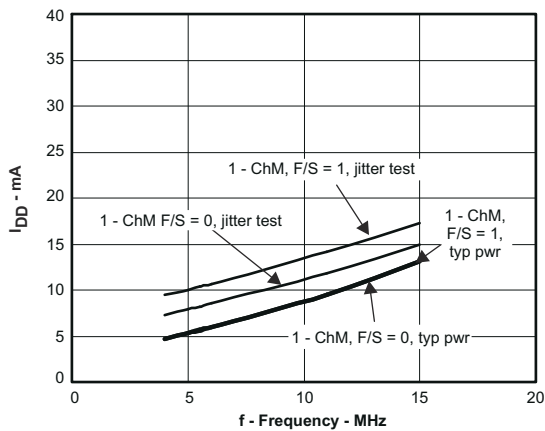


Figure 6-3. Supply Current vs Frequency, 1-Channel Mode

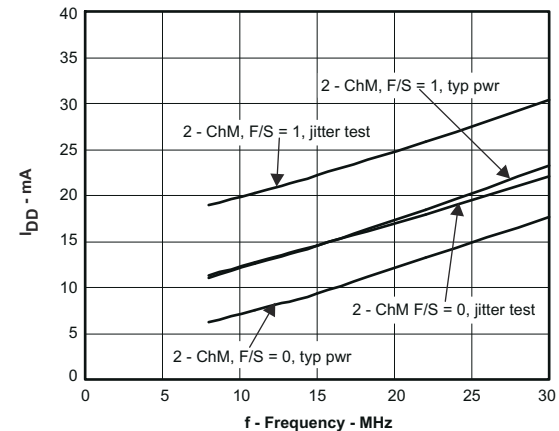


Figure 6-4. Supply Current vs Frequency, 2-Channel Mode

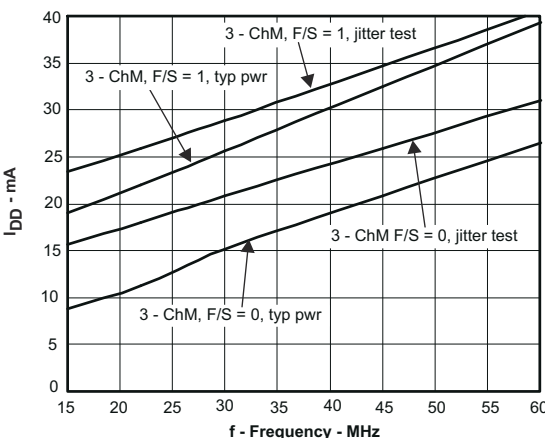


Figure 6-5. Supply Current vs Frequency, 3-Channel Mode

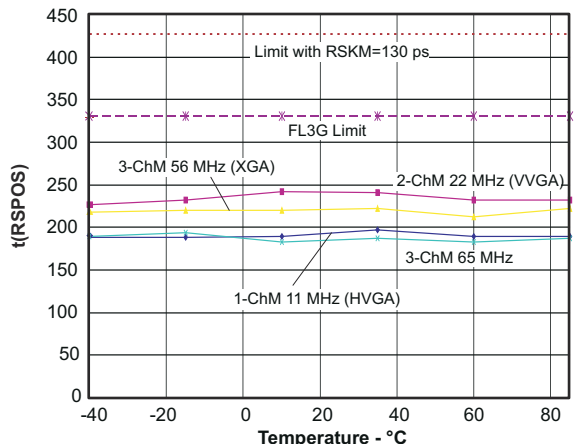


Figure 6-6. Receiver Strobe Position vs Temperature

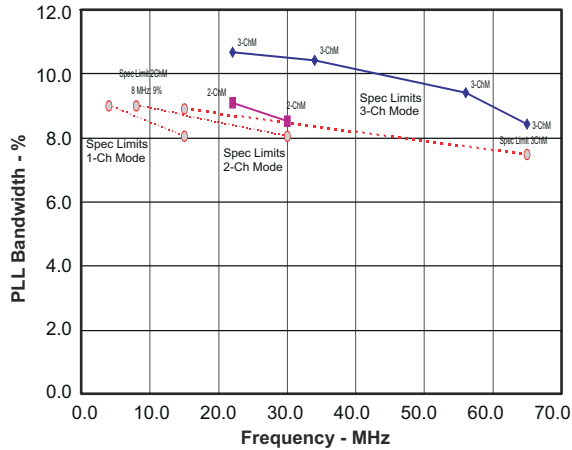


Figure 6-7. PLL Bandwidth

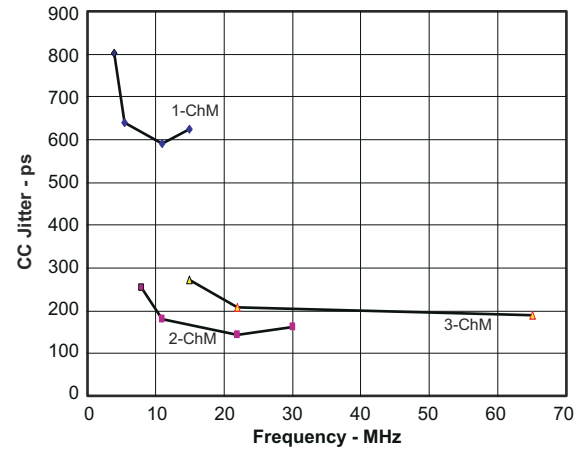


Figure 6-8. PCLK Cycle-to-Cycle Output Jitter

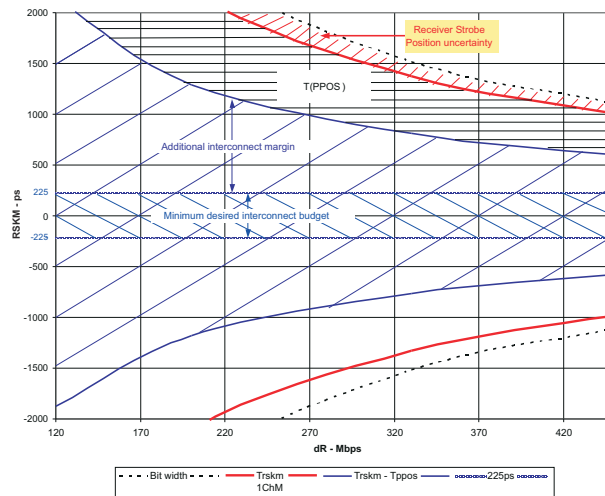


Figure 6-9. RSKM, 1-Channel Mode vs Bit Rate

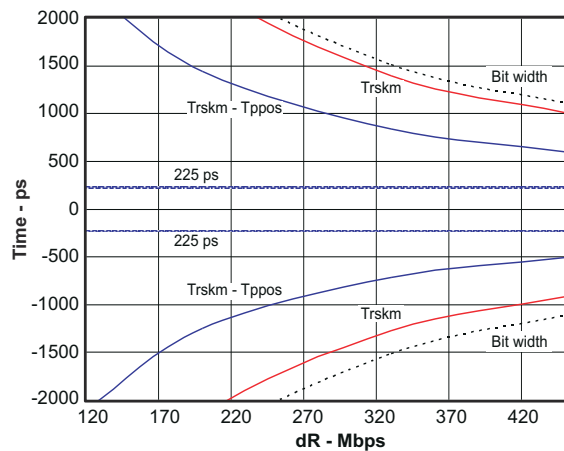


Figure 6-10. RSKM, 2-Channel Mode vs Bit Rate

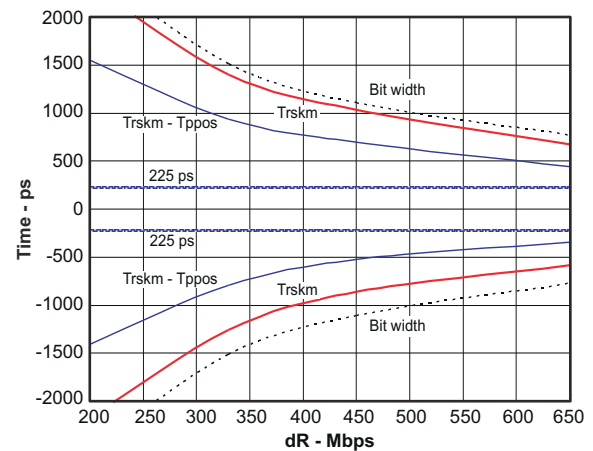


Figure 6-11. RSKM, 3-Channel Mode vs Bit Rate

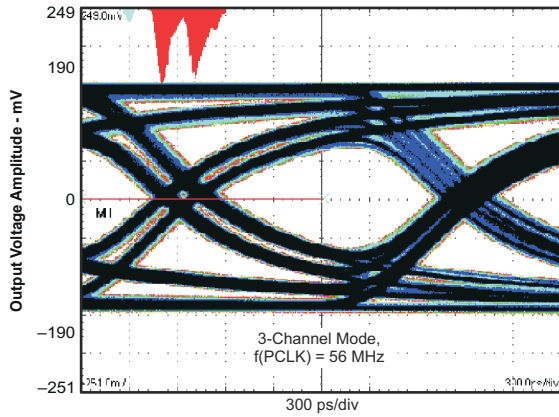


Figure 6-12. XGA 3-Channel Output Waveform

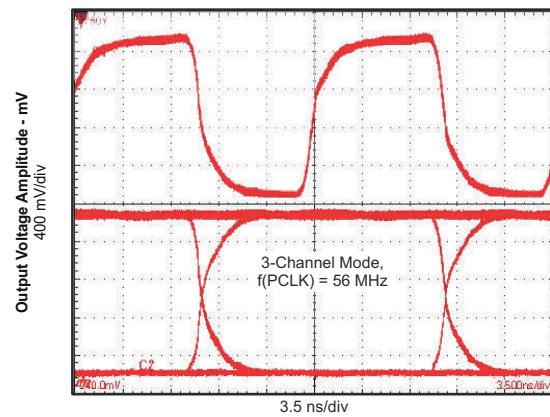


Figure 6-13. XGA 3-Channel Output Waveform

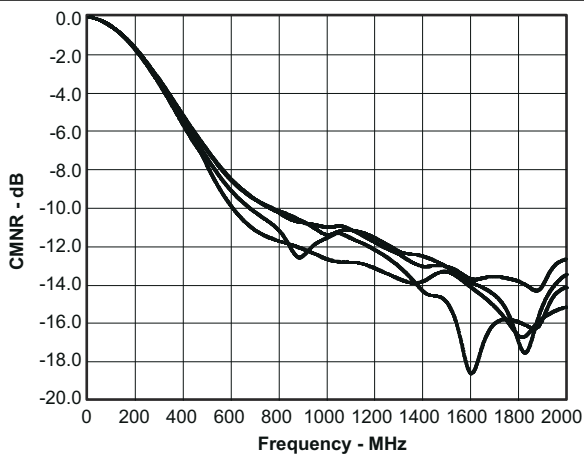


Figure 6-14. Input Common-Mode Noise Rejection vs Frequency

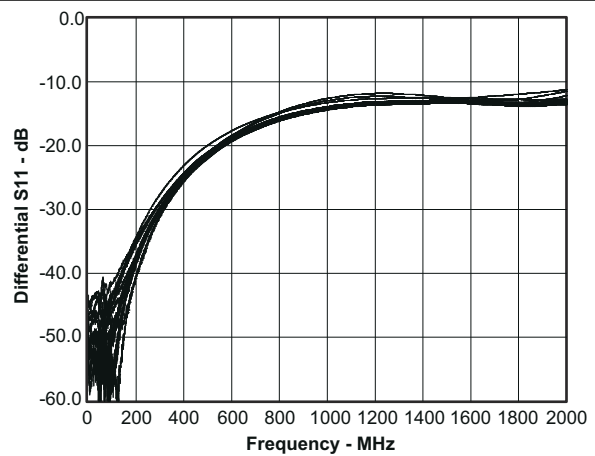


Figure 6-15. Input Return Loss

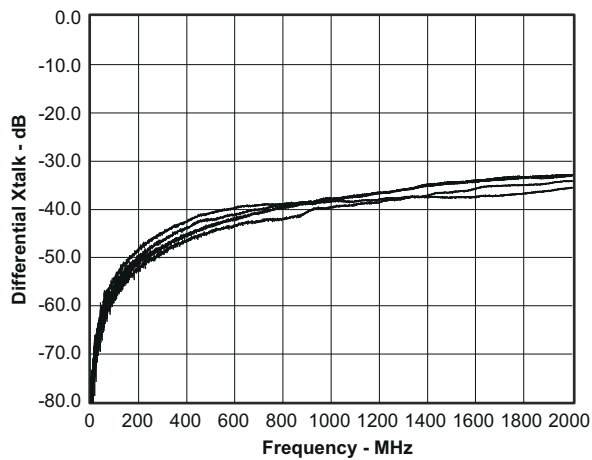


Figure 6-16. Input Differential Crosstalk vs Frequency

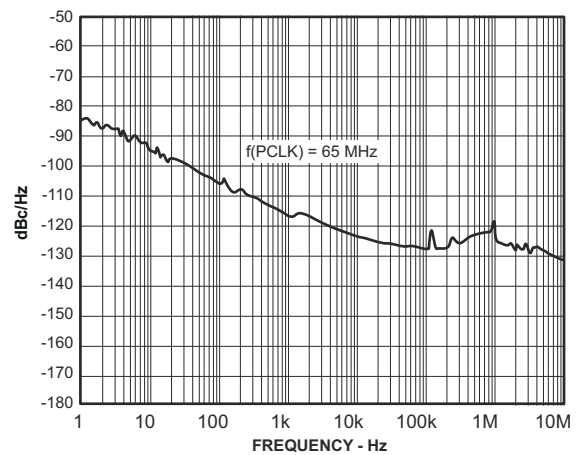


Figure 6-17. Phase Noise

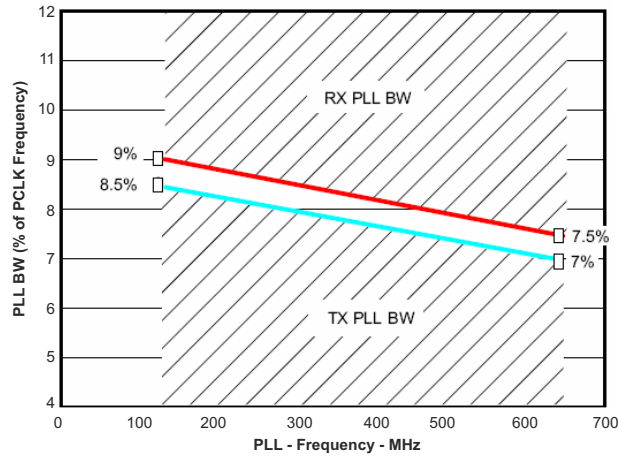


Figure 6-18. SN65LVDS302 PLL Bandwidth

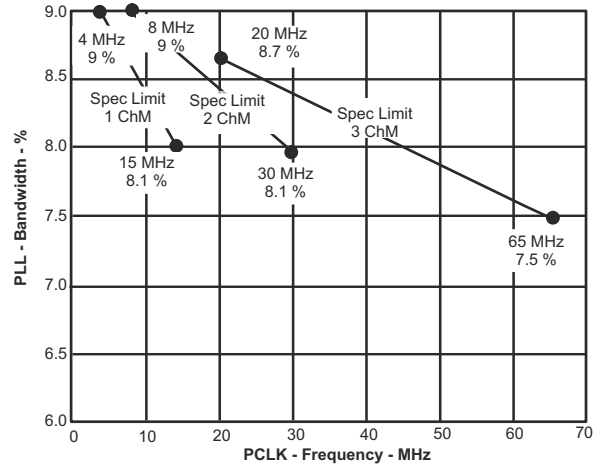


Figure 6-19. SN65LVDS301 PLL Bandwidth

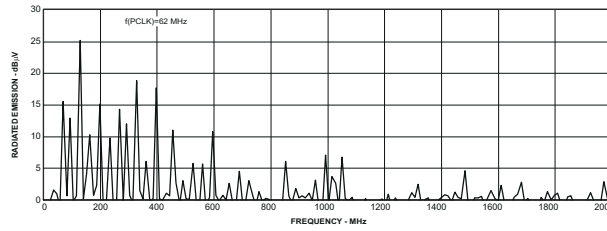


Figure 6-20. GTEM SAE J1752/3 EMI Test

7 Parameter Measurement Information

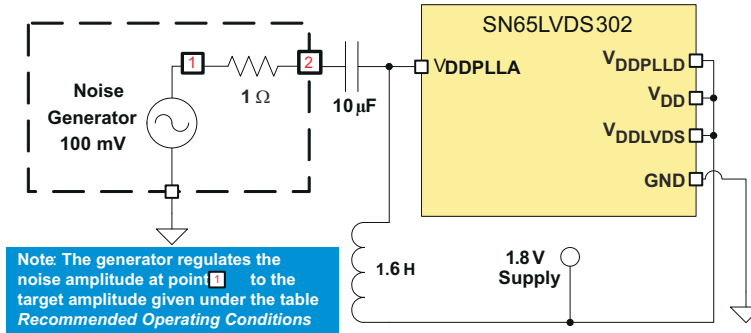
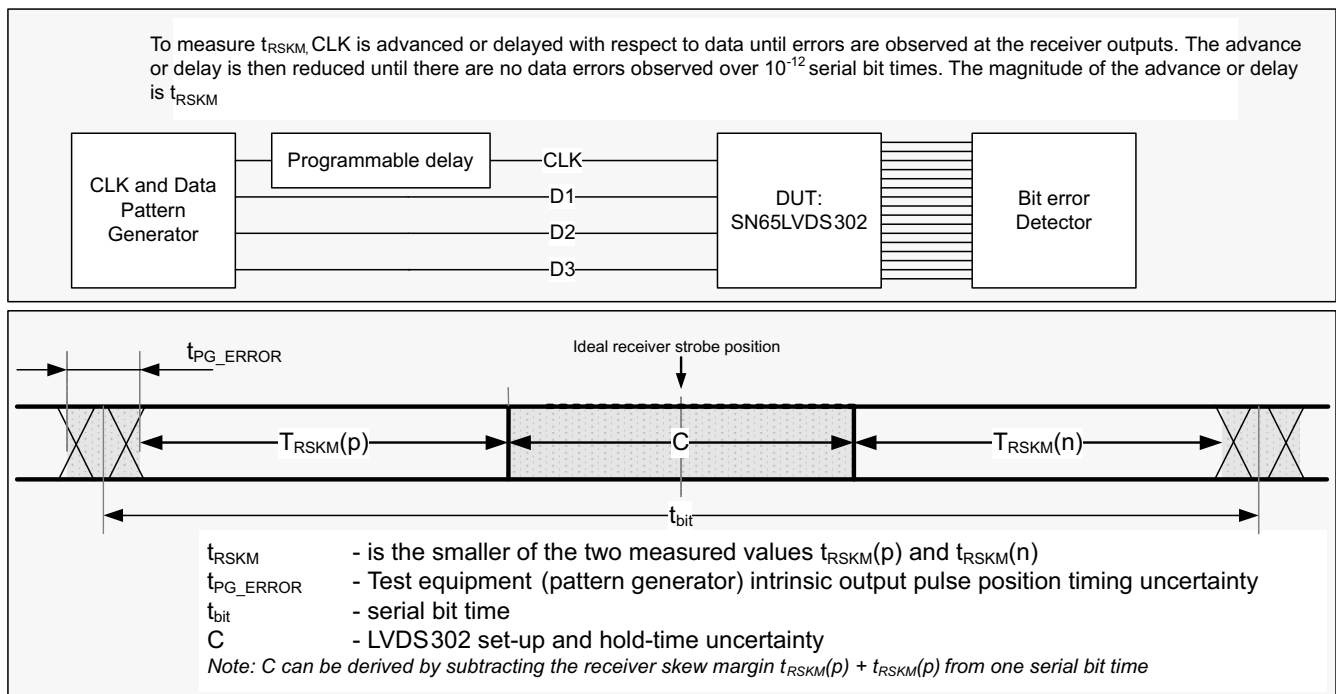


Figure 7-1. Power Supply Noise Test Set-Up



Copyright © 2016, Texas Instruments Incorporated

Figure 7-2. Jitter Budget

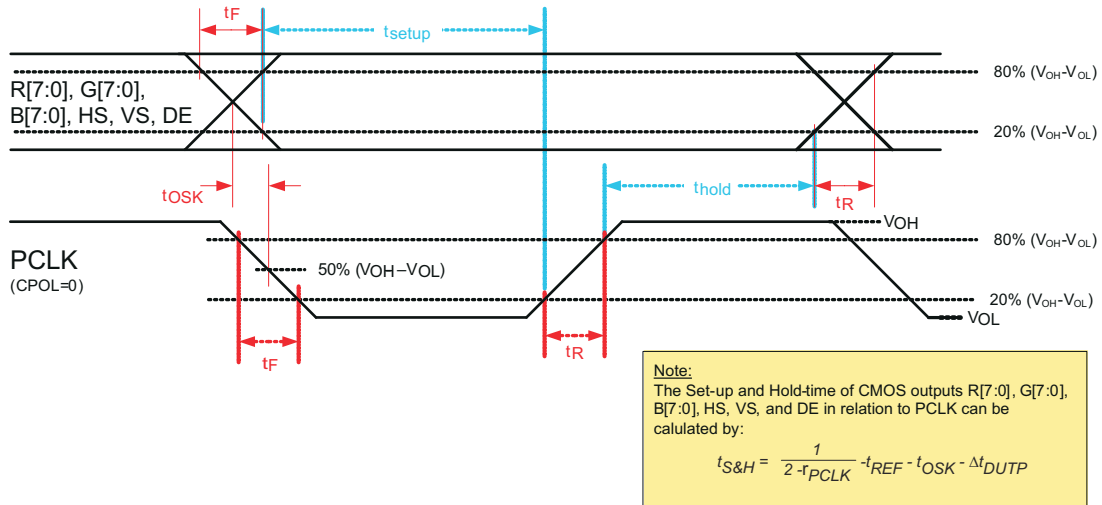


Figure 7-3. Output Rise and Fall, Setup and Hold Time

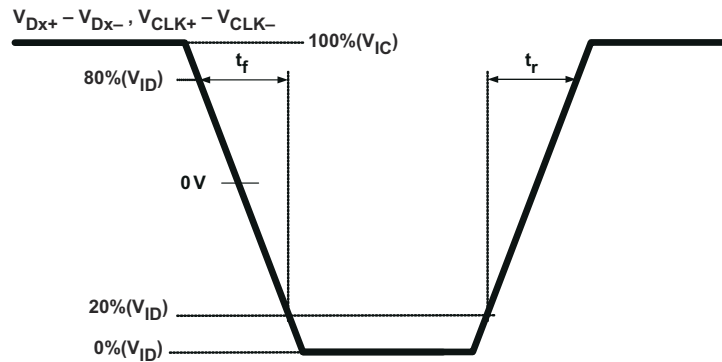


Figure 7-4. SubLVDS Differential Input Rise and Fall Time Definition

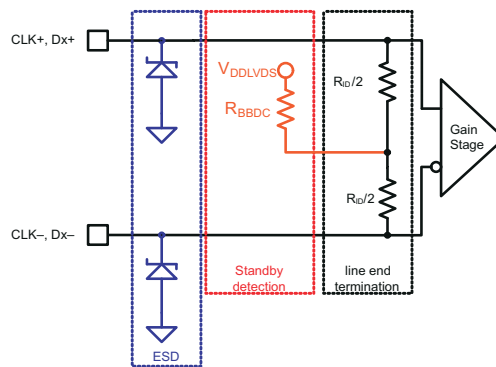


Figure 7-5. Equivalent Input Circuit Design

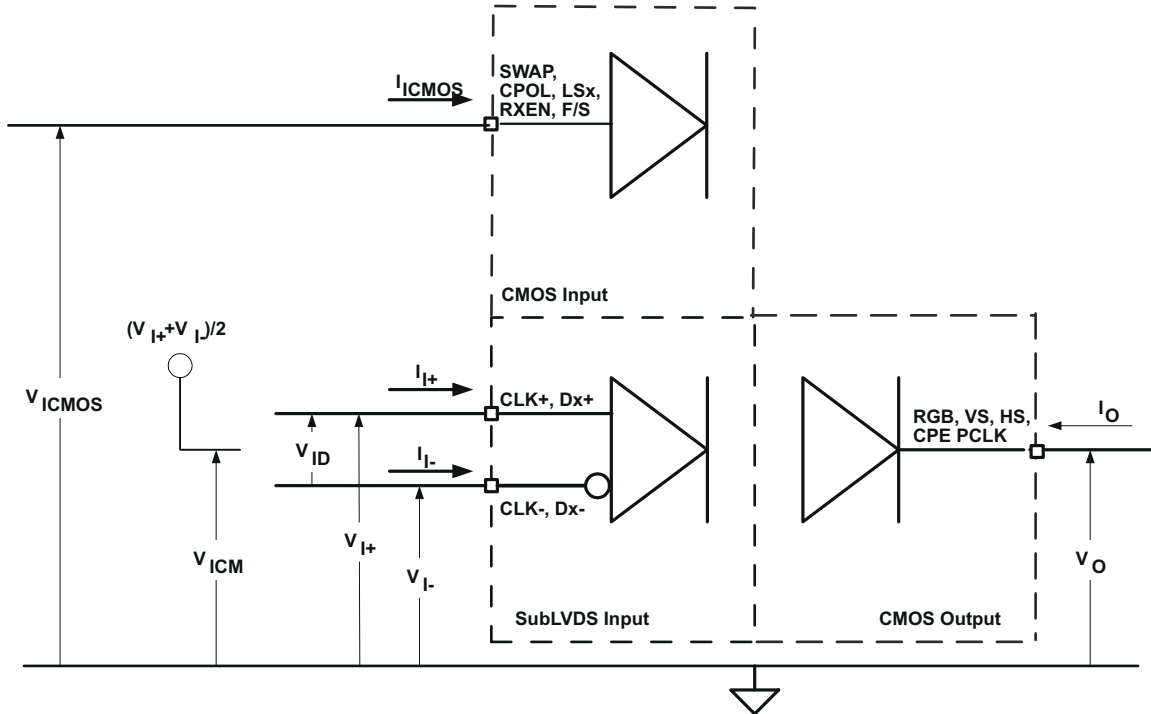


Figure 7-6. I/O Voltage and Current Definition

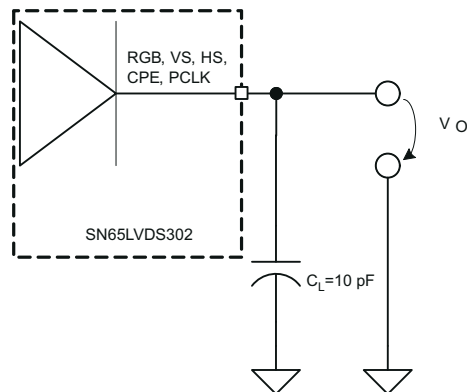


Figure 7-7. CMOS Output Test Circuit, Signal and Timing Definition

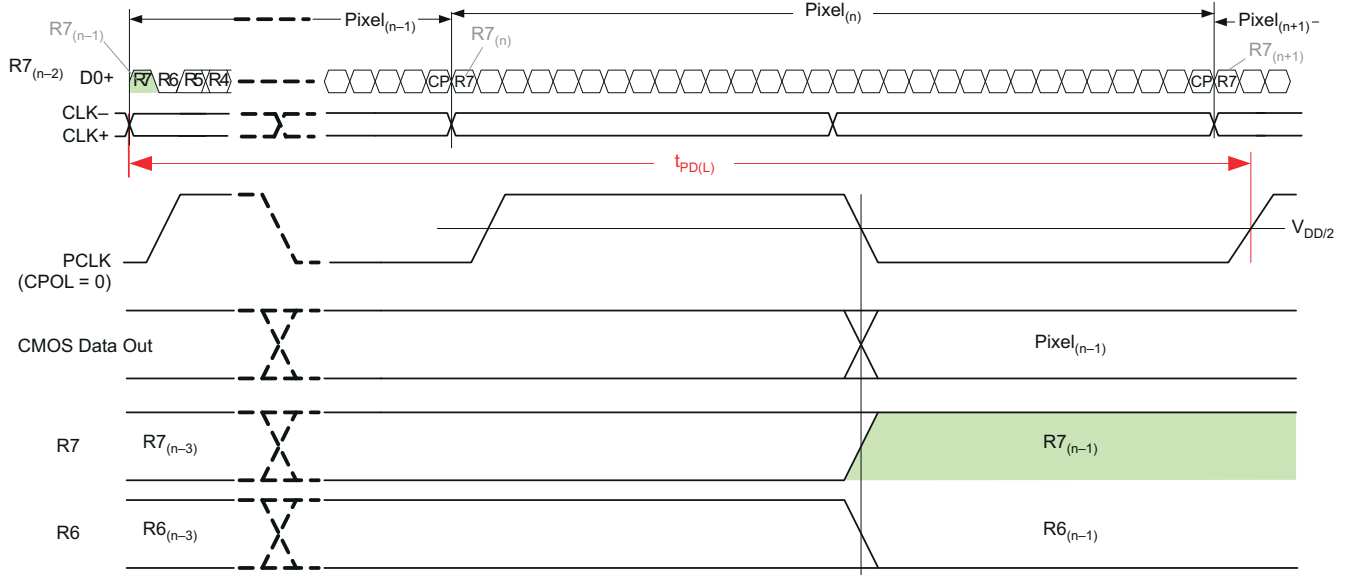


Figure 7-8. Propagation Delay Input to Output (LS0 = LS1 = 0)

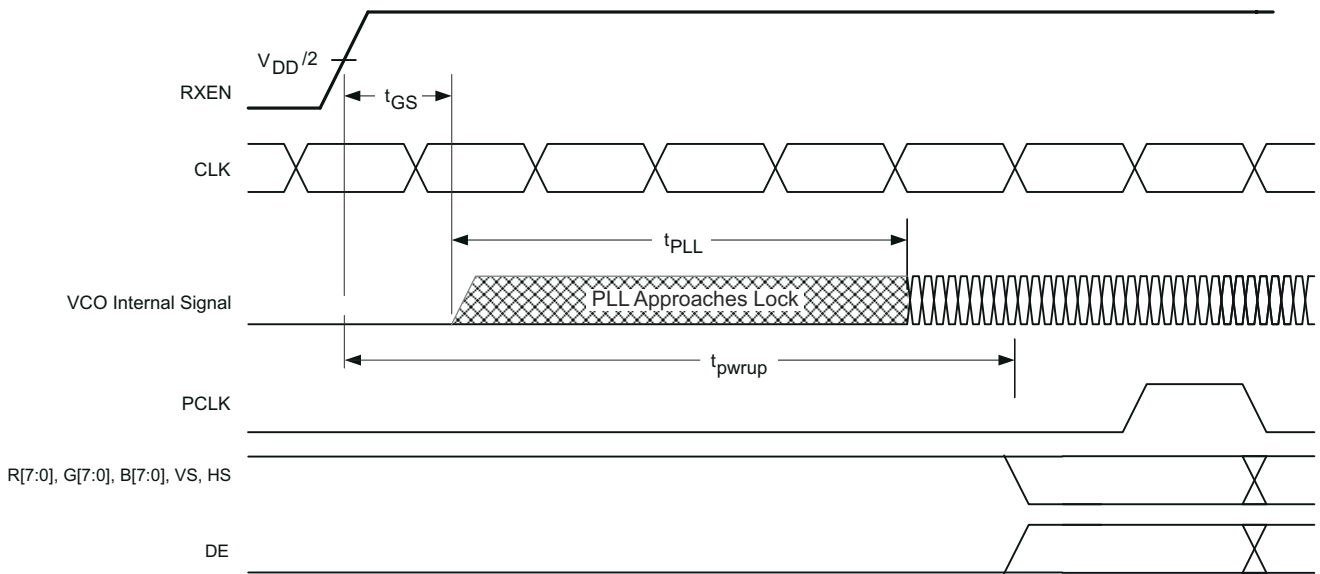


Figure 7-9. Receiver Phase Lock Loop Set Time and Receiver Enable Time

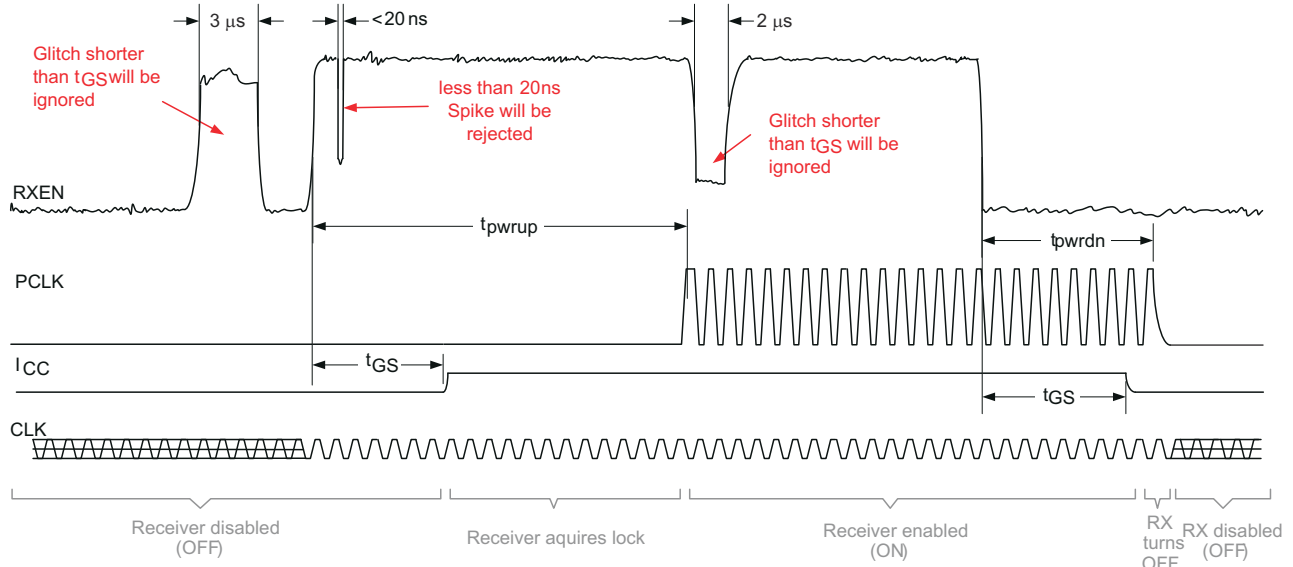


Figure 7-10. Receiver Enable and Disable Glitch Suppression Time

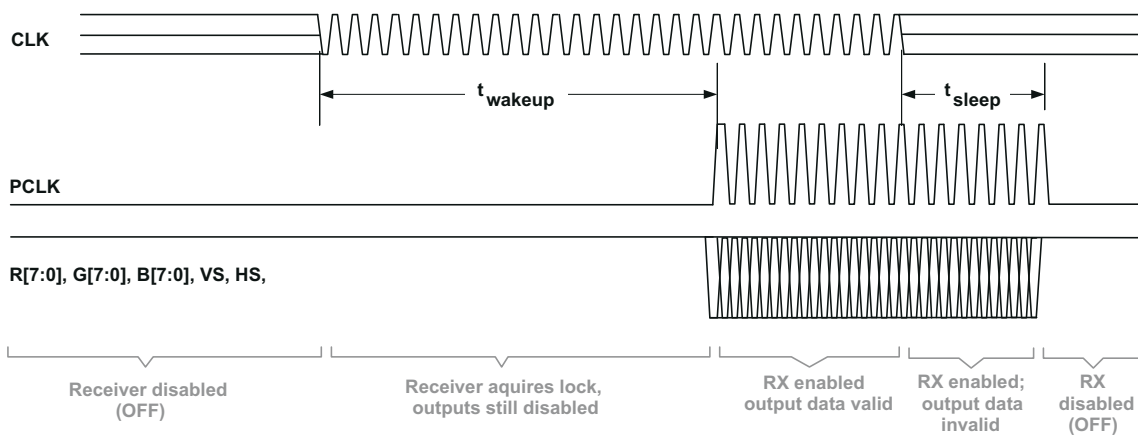


Figure 7-11. Standby Detection

7.1 Power Consumption Tests

Table 7-1 shows an example test pattern word.

Table 7-1. Example Test Pattern Word

| WORD | R[7:4], R[3:0], G[7:4], G[3:0], B[7:4], B[3:0], 0, VS, HS, DE |
|------|---|
| 1 | 0x7C3E1E7 |

| 7 | | | | C | | | | 3 | | | | E | | | | 1 | | | | E | | | | 7 | | | |
|----|----|----|----|----|----|----|----|----|----|----|----|----|----|----|----|----|----|----|----|----|----|----|----|---|----|----|----|
| R7 | R6 | R5 | R4 | R3 | R2 | R1 | R0 | G7 | G6 | G5 | G4 | G3 | G2 | G1 | G0 | B7 | B6 | B5 | B4 | B3 | B2 | B1 | B0 | 0 | VS | HS | DE |
| 0 | 1 | 1 | 1 | 1 | 1 | 0 | 0 | 0 | 0 | 1 | 1 | 1 | 1 | 1 | 0 | 0 | 0 | 0 | 1 | 1 | 1 | 1 | 0 | 0 | 1 | 1 | 1 |

7.2 Typical IC Power Consumption Test Pattern

Typical power-consumption test patterns consist of sixteen 30-bit receive words in 1-channel mode, eight 30-bit receive words in 2-channel mode and five 30-bit receive words in 3-channel mode. The pattern repeats itself throughout the entire measurement. It is assumed that every possible code on the RGB outputs has the same probability to occur during typical device operation.

Table 7-2. Typical IC Power Consumption Test Pattern, 1-Channel Mode

| WORD | TEST PATTERN: R[7:4], R[3:0], G[7:4], G[3:0], B[7-4], B[3-0], 0, VS, HS, DE |
|------|--|
| 1 | 0x0000007 |
| 2 | 0xFFFF007 |
| 3 | 0x01FFF47 |
| 4 | 0xF0E07F7 |
| 5 | 0x7C3E1E7 |
| 6 | 0xE707C37 |
| 7 | 0xE1CE6C7 |
| 8 | 0xF1B9237 |
| 9 | 0x91BB347 |
| 10 | 0xD4CCC67 |
| 11 | 0xAD53377 |
| 12 | 0xACB2207 |
| 13 | 0xAAB2697 |
| 14 | 0x5556957 |
| 15 | 0xAAAAAB3 |
| 16 | 0xAAAAAA5 |

Table 7-3. Typical IC Power Consumption Test Pattern, 2-Channel Mode

| WORD | TEST PATTERN: R[7:4], R[3:0], G[7:4], G[3:0], B[7-4], B[3-0], 0, VS, HS, DE |
|------|--|
| 1 | 0x0000001 |
| 2 | 0x03F03F1 |
| 3 | 0xBFFBFF1 |
| 4 | 0x1D71D71 |
| 5 | 0x4C74C71 |
| 6 | 0xC45C451 |
| 7 | 0xA3aA3A5 |
| 8 | 0x5555553 |

Table 7-4. Typical IC Power Consumption Test Pattern, 3-Channel Mode

| WORD | Test Pattern: R[7:4], R[3:0], G[7:4], G[3:0], B[7-4], B[3-0], 0, VS, HS, DE |
|------|--|
| 1 | 0xFFFFFFFF1 |
| 2 | 0x0000001 |
| 3 | 0xF0F0F01 |
| 4 | 0xCCCCCC1 |
| 5 | 0xAAAAAA7 |

7.3 Maximum Power Consumption Test Pattern

The maximum (or worst-case) power consumption of the SN65LVDS302 is tested using the two different test pattern shown in table. Test patterns consist of sixteen 30-bit receive words in 1-channel mode, eight 30-bit receive words in 2-channel mode, and five 30-bit receive words in 3-channel mode. The pattern repeats itself throughout the entire measurement. It is assumed that every possible code on RGB outputs has the same probability to occur during typical device operation.

Table 7-5. Worst-Case Power Consumption Test Pattern

| WORD | TEST PATTERN: R[7:4], R[3:0], G[7:4], G[3:0], B[7-4], B[3-0], 0, VS, HS, DE |
|------|--|
| 1 | 0xAAAAAA5 |
| 2 | 0x5555555 |

Table 7-6. Worst-Case Power Consumption Test Pattern

| WORD | TEST PATTERN: R[7:4], R[3:0], G[7:4], G[3:0], B[7-4], B[3-0], 0, VS, HS, DE |
|------|--|
| 1 | 0x0000000 |
| 2 | 0xFFFFFFFF7 |

7.4 Output Skew Pulse Position and Jitter Performance

The following test patterns are used to measure the output skew pulse position and the jitter performance of the SN65LVDS302. The jitter test pattern stresses the interconnect, particularly to test for ISI, using very long run-lengths of consecutive bits, and incorporating very high and low data rates, maximizing switching noise. Each pattern is self-repeating for the duration of the test.

Table 7-7. Receive Jitter Test Pattern, 1-Channel Mode

| WORD | TEST PATTERN: R[7:4], R[3:0], G[7:4], G[3:0], B[7-4], B[3-0], 0, VS, HS, DE |
|------|--|
| 1 | 0x0000001 |
| 2 | 0x0000031 |
| 3 | 0x00000F1 |
| 4 | 0x00003F1 |
| 5 | 0x0000FF1 |
| 6 | 0x0003FF1 |
| 7 | 0x000FFF1 |
| 8 | 0x0F0F0F1 |
| 9 | 0x0C30C31 |
| 10 | 0x0842111 |
| 11 | 0x1C71C71 |
| 12 | 0x18C6311 |
| 13 | 0x1111111 |
| 14 | 0x3333331 |
| 15 | 0x2452413 |
| 16 | 0x22A2A25 |
| 17 | 0x5555553 |
| 18 | 0xDB6DB65 |
| 19 | 0xCCCCC1 |
| 20 | 0xEEEEEE1 |
| 21 | 0xE739CE1 |
| 22 | 0xE38E381 |
| 23 | 0xF7BDEE1 |
| 24 | 0xF3CF3C1 |
| 25 | 0xF0F0F01 |
| 26 | 0xFFFF001 |
| 27 | 0xFFFC001 |
| 28 | 0xFFFF001 |
| 29 | 0xFFFC001 |

Table 7-7. Receive Jitter Test Pattern, 1-Channel Mode (continued)

| WORD | TEST PATTERN: R[7:4], R[3:0], G[7:4], G[3:0], B[7-4], B[3-0], 0, VS, HS, DE |
|------|--|
| 30 | 0xFFFFF01 |
| 31 | 0xFFFFFC1 |
| 32 | 0FFFFFFF1 |

Table 7-8. Receive Jitter Test Pattern, 2-Channel Mode

| WORD | TEST PATTERN: R[7:4], R[3:0], G[7:4], G[3:0], B[7-4], B[3-0], 0, VS, HS, DE |
|------|--|
| 1 | 0x0000001 |
| 2 | 0x000FFF3 |
| 3 | 0x8008001 |
| 4 | 0x0030037 |
| 5 | 0xE00E001 |
| 6 | 0x00FF001 |
| 7 | 0x007E001 |
| 8 | 0x003C001 |
| 9 | 0x0018001 |
| 10 | 0x1C7E381 |
| 11 | 0x3333331 |
| 12 | 0x555AAA5 |
| 13 | 0x6DBDB61 |
| 14 | 0x7777771 |
| 15 | 0x555AAA3 |
| 16 | 0xAAAAAA5 |
| 17 | 0x5555553 |
| 18 | 0xAAA5555 |
| 19 | 0x8888881 |
| 20 | 0x9242491 |
| 21 | 0xAAA5571 |
| 22 | 0xCCCCCC1 |
| 23 | 0xE3E1C71 |
| 24 | 0xFFE7FF1 |
| 25 | 0xFFC3FF1 |
| 26 | 0xFF81FF1 |
| 27 | 0xFE00FF1 |
| 28 | 0x1FF1FF1 |
| 29 | 0xFFCFFC3 |
| 30 | 0x7FF7FF1 |
| 31 | 0xFFF0007 |
| 32 | 0FFFFFFF1 |

Table 7-9. Receive Jitter Test Pattern, 3-Channel Mode

| WORD | TEST PATTERN: R[7:4], R[3:0], G[7:4], G[3:0], B[7-4], B[3-0], 0, VS, HS, DE |
|------|--|
| 1 | 0x0000001 |
| 2 | 0x0000001 |
| 3 | 0x0000003 |

Table 7-9. Receive Jitter Test Pattern, 3-Channel Mode (continued)

| WORD | TEST PATTERN: R[7:4], R[3:0], G[7:4], G[3:0], B[7-4], B[3-0], 0, VS, HS, DE |
|------|--|
| 4 | 0x0101013 |
| 5 | 0x0303033 |
| 6 | 0x0707073 |
| 7 | 0x1818183 |
| 8 | 0xE7E7E71 |
| 9 | 0x3535351 |
| 10 | 0x0202021 |
| 11 | 0x5454543 |
| 12 | 0xA5A5A51 |
| 13 | 0xADADAD1 |
| 14 | 0x5555551 |
| 15 | 0xA6A2AA3 |
| 16 | 0xA6A2AA5 |
| 17 | 0x5555553 |
| 18 | 0x5555555 |
| 19 | 0xAAAAAA1 |
| 20 | 0x5252521 |
| 21 | 0x5A5A5A1 |
| 22 | 0xABABAB1 |
| 23 | 0xFDFCFD1 |
| 24 | 0xCAAACA1 |
| 25 | 0x1818181 |
| 26 | 0xE7E7E71 |
| 27 | 0xF8F8F81 |
| 28 | 0xFCFCFC1 |
| 29 | 0xFEFEFE1 |
| 30 | 0xFFFFFFFF1 |
| 31 | 0xFFFFFFFF5 |
| 32 | 0xFFFFFFFF5 |

8 Detailed Description

8.1 Overview

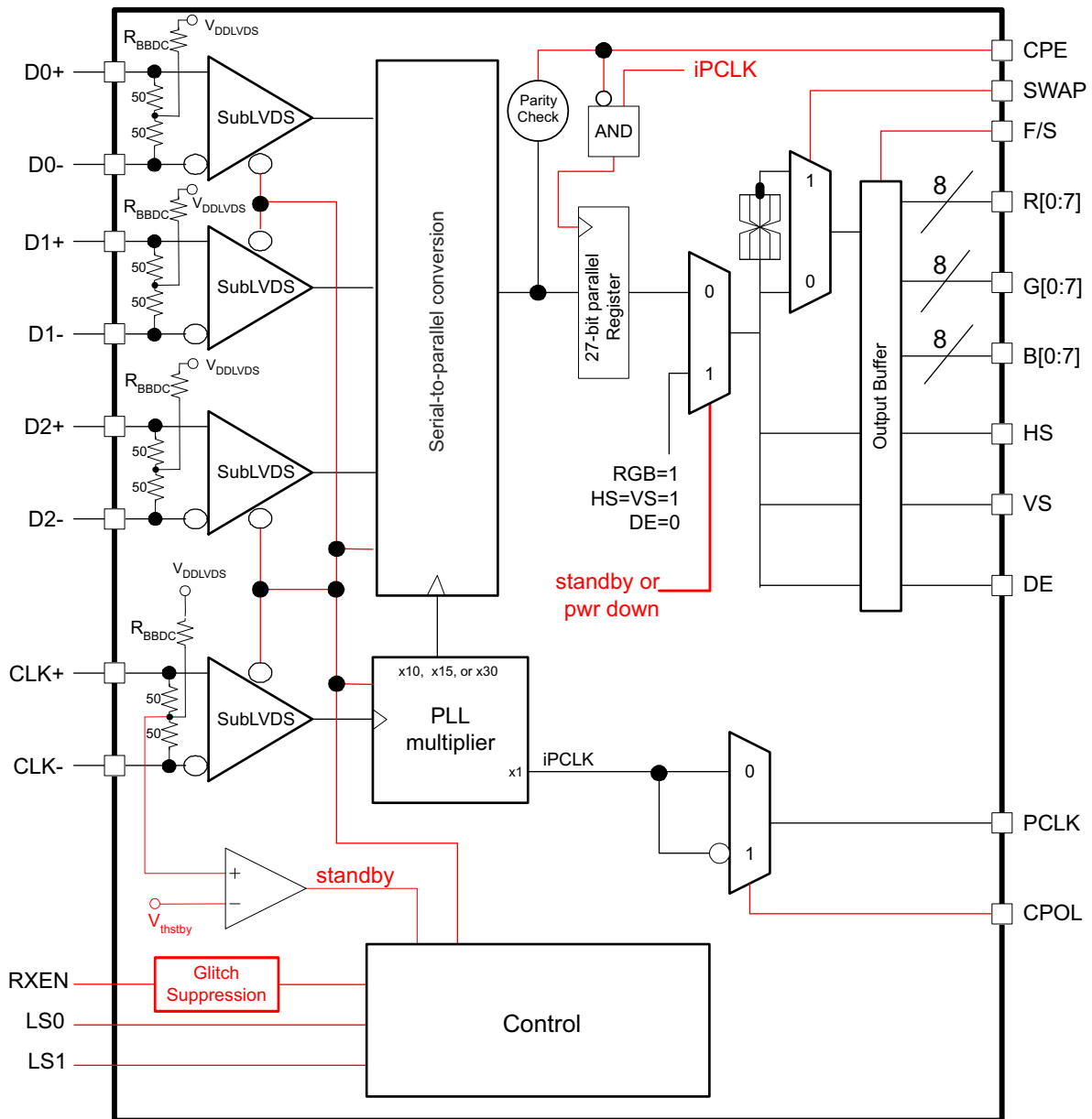
The SN65LVDS302 is a de-serialising device where the input serial data and clock are received through Sub Low-Voltage Differential Signaling (SubLVDS) lines. The SN65LVDS302 supports three operating power modes (Shutdown, Standby, and Active) to conserve power.

Two Link Select lines LS0 and LS1 select whether 1, 2, or 3 serial links are used. The RXEN input may be used to put the SN65LVDS302 in a Shutdown mode. The SN65LVDS302 enters an active Standby mode if the common mode voltage of the CLK input becomes shifted to V_{DDLVDs} , as when the transmitter releases the CLK output into high-impedance. This minimizes power consumption without the need of switching an external control pin. The SN65LVDS302 is characterized for operation over ambient air temperatures of -40°C to 85°C . All CMOS and SubLVDS signals are 2-V tolerant with $V_{DD} = 0$ V. This feature allows signal power-up before V_{CC} is stabilized.

When receiving, the PLL locks to the incoming clock (CLK) and generates an internal high-speed clock at the line rate of the data lines. The data is serially loaded into a shift register using the internal high-speed clock. The de-serialized data is presented on the parallel output bus with a recreation of the Pixel clock (PCLK) generated from the internal high-speed clock. If no input CLK signal is present, the output bus is held static with the PCLK and DE held low, while all other parallel outputs are pulled high.

The parallel (CMOS) output bus offers a bus-swap feature. The SWAP control pin controls the output pin order of the output pixel data to be either R[7:0], G[7:0], B[7:0], VS, HS, DE or B[0:7], G[0:7], R[0:7], VS, HS, DE. This gives a PCB designer the flexibility to better match the bus to the LCD driver pinout or to put the receiver device on the top side or the bottom side of the PCB. The F/S control input selects between a slow CMOS bus output rise time for best EMI and power consumption and a fast CMOS output for increased speed or higher load designs.

8.2 Functional Block Diagram



Copyright © 2016, Texas Instruments Incorporated

8.3 Feature Description

8.3.1 Swap Pin Functionality

The SWAP pin allows the pcb designer to reverse the RGB bus, minimizing potential signal crossovers due to signal routing. The two drawings beneath show the RGB signal pin assignment based on the SWAP pin setting.

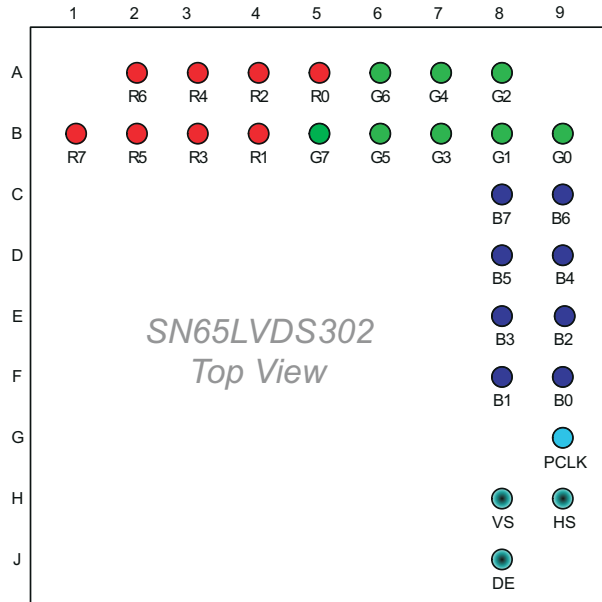


Figure 8-1. Pinout With SWAP PIN = GND

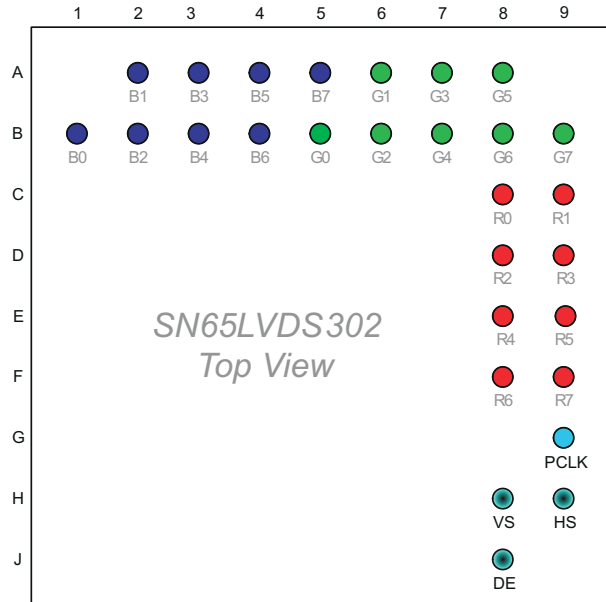


Figure 8-2. Pinout With SWAP PIN = VDD

8.3.2 Parity Error Detection and Handling

The SN65LVDS302 receiver performs error checking on the basis of a parity bit that is transmitted across the subLVDS interface from the transmitting device. Once the SN65LVDS302 detects the presence of the clock and the PLL has locked onto PCLK, then the parity is checked. Parity-error detection ensures detection of all single bit errors in one pixel and 50% of all multi-bit errors.

The parity bit covers the 27 bit data payload consisting of 24 bits of pixel data plus VS, HS, and DE. Odd Parity bit signalling is used. The parity error is output on the CPE pin. If the sum of the 27 data bits and the parity bit result in an odd number, the receive data are assumed to be valid. The CPE output is held low. If the sum equals an even number, parity error is declared. The CPE output indicates high for half a PCLK period. The CPE output is set with the data bit transition and cleared after 1/2 the data bit time. This allows counting every detected parity error with a simple counter connected to CPE.

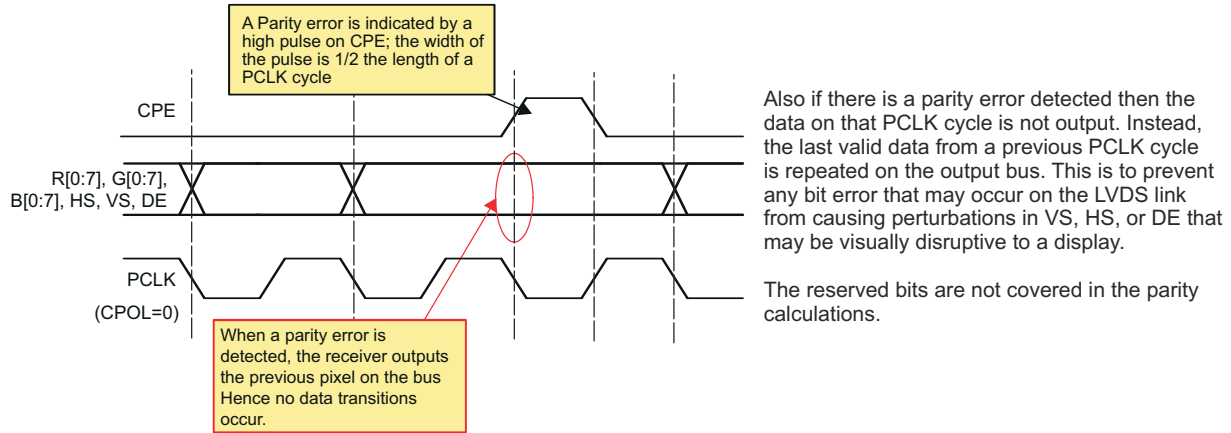


Figure 8-3. Parity Error Detection and Handling

8.4 Device Functional Modes

8.4.1 Deserialization Modes

The SN65LVDS302 receiver has three modes of operation controlled by link-select pins LS0 and LS1. [Table 8-1](#) shows the deserializer modes of operation.

Table 8-1. Logic Table: Link Select Operating Modes

| LS1 | LS0 | MODE OF OPERATION | | DATA LINKS STATUS |
|-----|-----|-------------------|--|-------------------------------|
| 0 | 0 | 1ChM | 1-channel mode (30-bit serialization rate) | D0 active; D1, D2 disabled |
| 0 | 1 | 2ChM | 2-channel mode (15-bit serialization rate) | D0, D1 active; D2 disabled |
| 1 | 0 | 3ChM | 3-channel mode (10-bit serialization rate) | D0, D1, D2 active |
| 1 | 1 | Reserved | | Reserved |

8.4.1.1 1-Channel Mode

While LS0 and LS1 are held low, the SN65LVDS302 receives payload data over a single SubLVDS data pair, D0. The PLL locks to the SubLVDS clock input and internally multiplies the clock by a factor of 30. The internal high speed clock is used to shift in the data payload on D0 and to deserialize 30 bits of data. [Figure 8-4](#) illustrates the timing and the mapping of the data payload into the 30-bit frame. The internal high speed clock is divided by a factor of 30 to recreate the pixel clock and the data payload with the pixel clock is presented on the output bus. The reserved bits and parity bit are not output. While in this mode, the PLL can lock to a clock that is in the range of 4 MHz through 15 MHz. This mode is intended for smaller video display formats that do not need the full bandwidth capabilities of the SN65LVDS302.

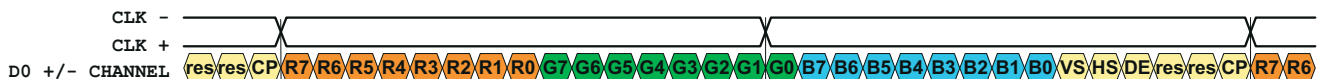


Figure 8-4. Data and Clock Input in 1-ChM (LS0 and LS1 = low)

8.4.1.2 2-Channel Mode

While LS0 is held high and LS1 is held low, the SN65LVDS302 receives payload data over two SubLVDS data pairs, D0 and D1. The PLL locks to the SubLVDS clock input and internally multiplies the clock by a factor of 15. The internal high speed clock is used to shift in the data payload on D0 and D1 and to deserialize 15 bits of data from each pair. Figure 8-5 illustrates the timing and the mapping of the data payload into the 30-bit frame. The internal high speed clock is divided by a factor of 15 to recreate the pixel clock, and the data payload with pixel clock is presented on the output bus. The reserved bits and parity bit are not output. While in this mode the PLL can lock to a clock that is in the range of 8 MHz through 30 MHz.



Figure 8-5. Data and Clock Input in 2-ChM (LS0 = high; LS1 = low)

8.4.1.3 3-Channel Mode

While LS0 is held low and LS1 is held high the SN65LVDS302 receives payload data over three SubLVDS data pairs: D0, D1, and D2. The PLL locks to the SubLVDS clock input and internally multiplies the clock by a factor of 10. The internal high speed clock is used to shift in the data payload on D0, D1, and D2, and to deserialize 10 bits of data from each pair. Figure 8-6 illustrates the timing and the mapping of the data payload into the 30-bit frame. While in this mode the PLL can lock to a clock that is in the range of 20 MHz through 65 MHz.

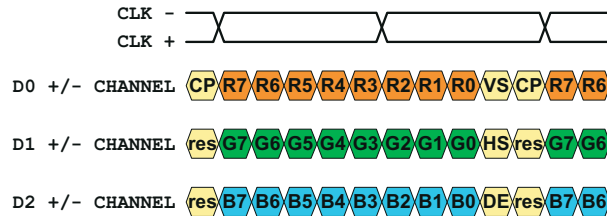


Figure 8-6. Data and Clock Input in 3-ChM (LS0 = low; LS1 = high)

8.4.2 Powerdown Modes

The SN65LVDS302 Receiver has two powerdown modes to facilitate efficient power management.

8.4.2.1 Shutdown Mode

A low input signal on the RXEN pin puts the SN65LVDS302 into Shutdown mode. This turns off most of the receiver circuitry including the SubLVDS receivers, PLL, and deserializers. The subLVDS differential-input resistance remains 100 Ω , while any input signal is ignored. All outputs hold a static output pattern:

R[0:7] = G[0:7] = B[0:7] = VS = HS = high; DE = PCLK = low.

The current draw in Shutdown mode is nearly zero if the SubLVDS inputs are left open or pulled high.

8.4.2.2 Standby Mode

The SN65LVDS302 enters the Standby mode when the SN65LVDS302 is not in Shutdown mode but the SubLVDS clock-input common-mode voltage is above $0.9 \times V_{DDLVDs}$. The CLK input incorporates a pull-up circuit to shift the SubLVDS clock-input common-mode voltage to V_{DDLVDs} in the absence of an input signal. All circuitry except the SubLVDS clock-input Standby monitor is shut down. The SN65LVDS302 also enters Standby mode when the input clock frequency on the CLK input is less than 500 kHz. The SubLVDS input resistance remains 100 Ω while any input signal on the data inputs D0, D1, and D2 becomes ignored. All outputs holds a static output pattern:

R[0:7] = G[0:7] = B[0:7] = VS = HS = high; DE = PCLK = low.

The current drawn in Standby mode is very low.

8.4.3 Active Modes

A high input signal on RXEN combined with a CLK input signal switching faster than 3 MHz and V_{ICM} smaller than 1.3 V forces the SN65LVDS302 into Active mode. Current consumption in active mode depends on operating frequency and the number of data transitions in the data payload. CLK-input frequencies from 3 MHz to 4 MHz activates the device but proper PLL functionality is not secured. The SN65LVDS302 must not be operated in active mode at CLK frequencies below 4 MHz.

8.4.3.1 Acquire Mode (PLL Approaches Lock)

When the SN65LVDS302 is enabled and a SubLVDS clock input present, the PLL pursues lock to the input clock. While the PLL pursues lock the output data bus holds a static output pattern:

$R[0:7] = G[0:7] = B[0:7] = VS = HS = \text{high}$; $DE = PCLK = \text{low}$.

For proper device operation, the pixel clock frequency must fall within the valid f_{PCLK} range specified under recommended operating conditions. If the pixel clock frequency is larger than 3 MHz but smaller than $f_{PCLK(\text{min})}$, the SN65LVDS302 PLL is enabled. Under such conditions, it is possible for the PLL to lock temporarily to the pixel clock, causing the PLL monitor to release the device into active receive mode. If this happens, the PLL may or may not be properly locked to the pixel clock input, potentially causing data errors, frequency oscillation, and PLL deadlock (loss of VCO oscillation).

8.4.3.2 Receive Mode

After the PLL achieves lock the device enters the normal receive mode. The output data bus presents the de-serialized data. The PCLK output pin outputs the recovered pixel clock.

8.4.4 Status Detect and Operating Modes Flow

The SN65LVDS302 switches between the power saving and active modes in the following way:

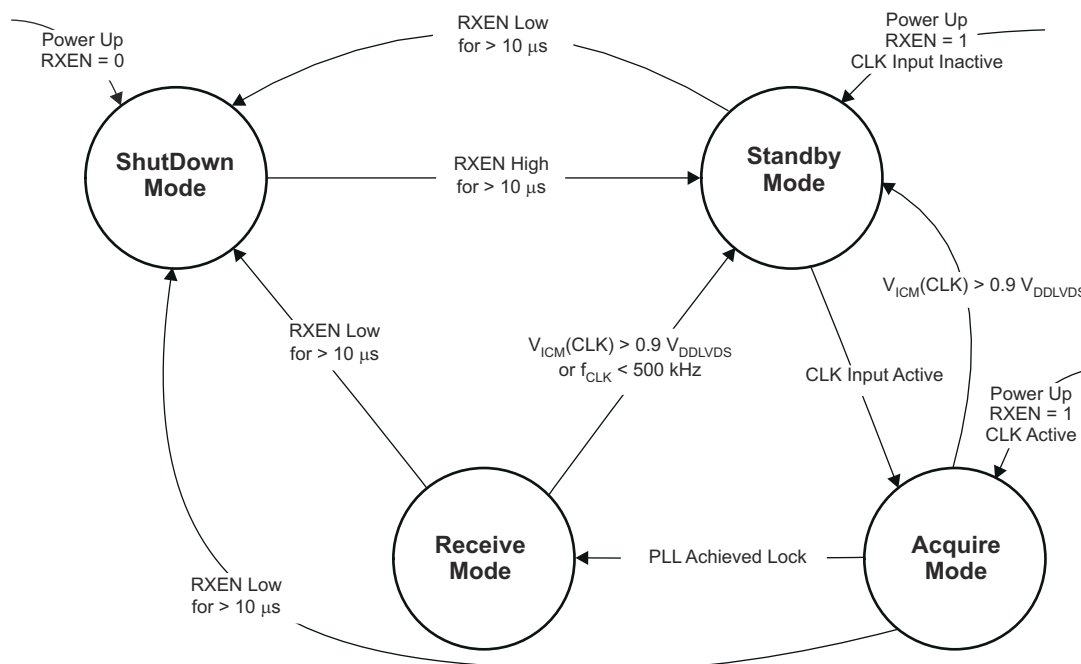


Figure 8-7. Operating Modes and State Machine Diagram

Table 8-2. Status Detect and Operating Modes Descriptions

| MODE | CHARACTERISTICS | CONDITIONS |
|---------------|---|---|
| Shutdown Mode | Least amount of power consumption (most circuitry turned off); All outputs held static: R[0:7] = G[0:7] = B[0:7] = VS = HS = high DE = PCLK = low; | RXEN is set low for longer than 10 μ s ^{(1) (2)} |
| Standby Mode | Low power consumption (Standby monitor circuit active; PLL is shutdown to conserve power); All outputs held static: R[0:7] = G[0:7] = B[0:7] = VS = HS = high DE = PCLK = low; | RXEN is high for longer than 10 μ s, and both CLK input common-mode $V_{ICM(CLK)}$ above $0.9 \times V_{DDLVDs}$, or CLK input floating ⁽²⁾ |
| Acquire Mode | PLL pursues lock; All outputs held static: R[0:7] = G[0:7] = B[0:7] = VS = HS = high DE = PCLK = low; | RXEN is high; CLK input monitor detected clock input common mode and woke up receiver out of Standby mode |
| Receive Mode | Data transfer (normal operation); receiver deserializes data and provides data on parallel output | RXEN is high and PLL is locked to incoming clock |

- (1) In Shutdown Mode, all SN65LVDS302 internal switching circuits (for example: PLL, serializer, etc.) are turned off to minimize power consumption. The input stage of any input pin remains active.
- (2) Leaving CMOS control inputs unconnected can cause random noise to toggle the input stage and potentially harm the device. All CMOS inputs must be tied to a valid logic level V_{IL} or V_{IH} during Shutdown or Standby Mode. Exceptions are the subLVDS inputs CLK and Dx, which can be left unconnected while not in use.

Table 8-3. Operating Mode Transitions

| MODE TRANSITION | USE CASE | TRANSITION SPECIFICS |
|--------------------------------|--|--|
| Shutdown → Standby | Drive RXEN high to enable receiver | <ol style="list-style-type: none"> 1. RXEN high > 10 μs 2. Receiver enters standby mode <ol style="list-style-type: none"> a. R[0:7] = G[0:7] = B[0:7] = VS = HS remain high and DE = PCLK low b. Receiver activates clock input monitor |
| Standby → Acquire | Transmitter activity detected | <ol style="list-style-type: none"> 1. CLK input monitor detects clock input activity 2. Outputs remain static 3. PLL circuit is enabled |
| Acquire → Receive | Link is ready to receive data | <ol style="list-style-type: none"> 1. PLL is active and approaches lock 2. PLL achieves lock within t_{wakeUp} 3. D1, D2, or D3 become active depending on LS0 and LS1 selection 4. First Data word was recovered 5. Parallel output bus turns on switching from static output pattern to output first valid data word |
| Receive → Standby | Transmitter requested to enter Standby mode by input common mode voltage $V_{ICM} > 0.9 V_{DDLVDs}$ as when transmitter output clock stops or enters high-impedance state. | <ol style="list-style-type: none"> 1. Receiver disables outputs within t_{sleep} 2. RX Input monitor detects $V_{ICM} > 0.9 V_{DDLVDs}$ within t_{sleep} 3. R[0:7] = G[0:7] = B[0:7] = VS = HS transition to high and DE = PCLK to low on next falling PLL clock edge 4. PLL shuts down. Clock activity input monitor remains active |
| Receive and Standby → Shutdown | Turn off Receiver | <ol style="list-style-type: none"> 1. RXEN pulled low for > t_{pwrDn} 2. R[0:7] = G[0:7] = B[0:7] = VS = HS remain static high or transition to static high and DE = PCLK remain or transition to static low 3. Most IC circuitry is shut down for least power consumption |

9 Application and Implementation

Note

Information in the following applications sections is not part of the TI component specification, and TI does not warrant its accuracy or completeness. TI's customers are responsible for determining suitability of components for their purposes. Customers should validate and test their design implementation to confirm system functionality.

9.1 Application Information

9.1.1 Application Information

General application guidelines and hints for LVDS drivers and receivers may be found in the [LVDS application notes and design guides](#).

9.1.2 Preventing Increased Leakage Currents in Control Inputs

A floating (left open) CMOS input allows leakage currents to flow from V_{DD} to GND. Do not leave any CMOS input unconnected or floating. Every input must be connected to a valid logic level V_{IH} or V_{OL} while power is supplied to V_{DD} . This also minimizes the power consumption of standby and power down mode.

9.1.3 Calculation Example: HVGA Display

The following calculation shows an example for a Half-VGA display with the following parameters:

| | |
|---------------------------|-------------|
| Display Resolution: | 480 × 320 |
| Frame Refresh Rate: | 58.4 Hz |
| Horizontal Visible Pixel: | 480 columns |
| Horizontal Front Porch: | 20 columns |
| Horizontal Sync: | 5 columns |
| Horizontal Back Porch: | 3 columns |
| Vertical Visible Pixel: | 320 lines |
| Vertical Front Porch: | 10 lines |
| Vertical Sync: | 5 lines |
| Vertical Back Porch: | 3 lines |

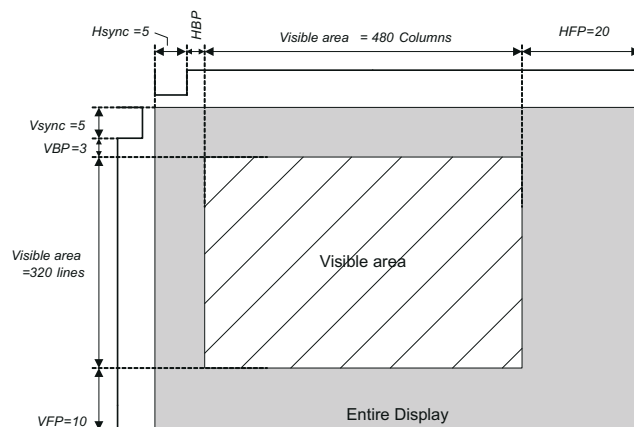


Figure 9-1. HVGA Display

Calculation of the total number of pixel and blanking overhead:

| | |
|---------------------------|---|
| Visible Area Pixel Count: | $480 \times 320 = 153600$ pixel |
| Total Frame Pixel Count: | $(480 + 20 + 5 + 3) \times (320 + 10 + 5 + 3) = 171704$ pixel |
| Blanking Overhead: | $(171704 - 153600) \div 153600 = 11.8\%$ |

The application requires the following serial-link parameters:

| | |
|----------------------|---|
| Pixel Clk Frequency: | $171704 \times 58.4 \text{ Hz} = 10 \text{ MHz}$ |
| Serial Data Rate: | 1-channel mode: $10 \text{ MHz} \times 30 \text{ bit/channel} = 300 \text{ Mbps}$ |
| | 2-channel mode: $10 \text{ MHz} \times 15 \text{ bit/channel} = 150 \text{ Mbps}$ |

9.1.4 How to Determine Interconnect Skew and Jitter Budget

Designing a reliable data link requires examining the interconnect skew and jitter budget. The sum of all transmitter, PCB, connector, FPC, and receiver uncertainties must be smaller than the available serial bit time. The highest pixel clock frequency defines the available serial bit time. The transmitter timing uncertainty is defined by t_{PPOS} in the transmitter data sheet. For a bit-error-rate target of $\leq 10^{-12}$, the measurement duration for t_{PPOS} is $\geq 10^{12}$. The SN65LVDS302 receiver can tolerate a maximum timing uncertainty defined by t_{RSKM} . The interconnect budget is calculated by Equation 1.

$$t_{interconnect} = t_{RSKM} - t_{PPOS} \tag{1}$$

Example:

| | |
|---|---|
| $f_{PCLK(max)}$ | 23 MHz (VGA display resolution, 60 Hz) |
| Transmission mode: 2-ChM; $t_{PPOS}(SN65LVDS301)$ | 330 ps |
| Target bit error rate | 10^{-12} |
| $t_{RSKM}(SN65LVDS302)$ | $1 / (2 \times 15 \times f_{PCLK}) - 480 \text{ ps} = 969 \text{ ps}$ |

The interconnect budget for cable skew and ISI must be smaller than the output of Equation 2.

$$t_{interconnect} = t_{RSKM} - t_{PPOS} = 639 \text{ ps} \tag{2}$$

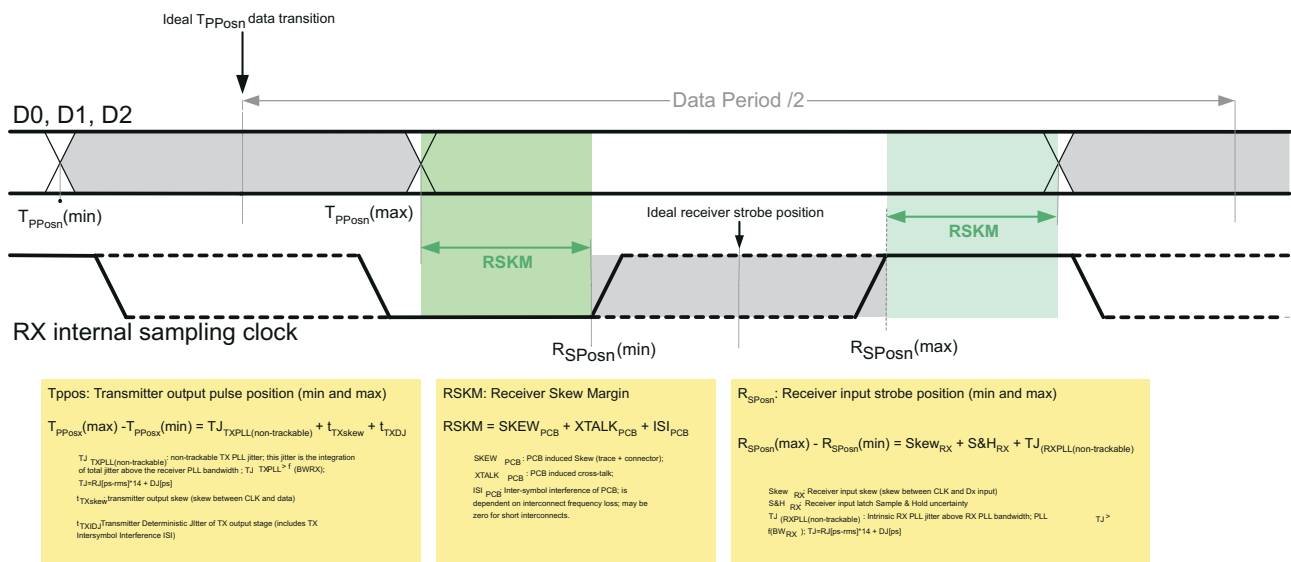


Figure 9-2. Jitter Budget

9.1.5 F/S Pin Setting and Connecting the SN65LVDS302 to an LCD Driver

Note

Receiver PLL tracking: To maximize the design margin for the interconnect, good RX PLL tracking of the TX PLL is important. FlatLink3G requires the RX PLL to have a bandwidth higher than the bandwidth of the TX PLL. The SN65LVDS302 PLL design is optimized to track the SN65LVDS0301 PLL particularly well, thus providing a very large receiver skew margin. A FlatLink3G-compliant link must provide at least ± 225 ppm of receiver skew margin for the interconnect.

It is important to understand the tradeoff between power consumption, EMI, and maximum speed when selecting the F/S signal. It is beneficial to choose the slowest rise time possible to minimize EMI and power consumption. Unfortunately a slower rise time also reduces the timing margin left for the LCD driver. Hence it is necessary to calculate the timing margin to select the correct F/S pin setting.

The output rise time depends on the output driver strength and the output load. An LCD driver typical capacitive load is assumed with approximately 10 pF. As the capacitive load increases, the rise time also increases. Rise time of the SN65LVDS302 is measured as the time duration it takes the output voltage to rise from 20% of V_{DD} and 80% of V_{DD} and fall time is defined as the time for the output voltage to transition from 80% of V_{DD} down to 20%.

Within one mode of operation and one F/S pin setting, the rise time of the output stage is fixed and does not adjust to the pixel frequency. Due to the short bit time at very fast pixel clock speeds and the real capacitive load of the display driver, the output amplitude might not reach V_{DD} and GND saturation fully. To ensure sufficient signal swing and verify the design margin, it becomes necessary to determine that the output amplitude under any circumstance reaches the display driver's input stage logic threshold (usually 30% and 70% of V_{DD}).

Figure 9-3 shows a worst-case rise time simulation assuming a LCD driver load of 16 pF at VGA display resolution. PCLK is the fastest switching output. With F/S set to GND (Figure 9-4), the PCLK output voltage amplitude is significantly reduced. The voltage amplitude of the output data RGB[7:0], VS, HS, and DE shows less amplitude attenuation because these outputs carry random data pattern and toggle equal or less than half of the PCLK frequency. It is necessary to determine the timing margin between the LVDS302 output and LCD driver input.

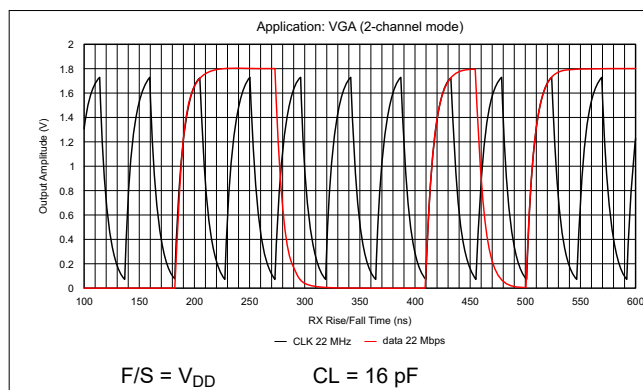
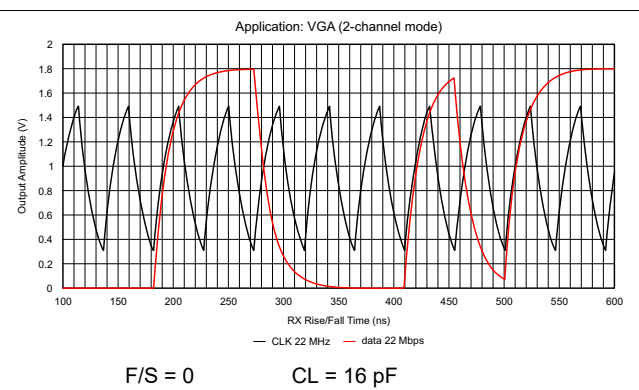


Figure 9-3. Output Amplitude vs Toggling Frequency (F/S = 1)



The data signal has a slower maximum switching frequency, and therefore drives a larger amplitude than the clock signal.

Figure 9-4. Output Amplitude vs Toggling Frequency (F/S = 0)

9.1.6 How to Determine the LCD Driver Timing Margin

To determine the timing margin, it is necessary to specify the frequency of operation, identify the set-up and hold time of the LCD driver, and specify the output load of the SN65LVDS302 as a combination of the LCD driver input parasitics plus any capacitance caused by the connecting PCB trace. Furthermore, the setting of pin F/S and the SN65LVDS302 output skew impact the margin. The total remaining design margin calculates as following:

$$t_{DM} = \frac{1}{2 \times f_{PCLK}} - t_{DUTP(max_error)} - \frac{t_{rise(max)} \times C_{LOAD}}{10 \text{ pF}} - |t_{OSK}| \quad (3)$$

where

- t_{DM} is the design margin
- f_{PCLK} is the pixel clock frequency
- $t_{DUTP(max_error)}$ is the maximum duty cycle error
- $t_{rise(max)}$ is the maximum rise or fall time; see $t_{R/F}$ under switching characteristics
- C_L is the parasitic capacitance (sum of LCD driver input parasitics + connecting PCB trace)
- t_{skew} is the clock to data output skew SN65LVDS302

Example:

At a pixel clock frequency of 5.5 MHz (QVGA), and an assumed LCD driver load of 15 pF, the remaining timing margin is:

$$t_{DUTP(max_error)} = \frac{|t_{DUTP(max)} - 50|}{100\%} \times t_{PCLK} = \frac{5\%}{100\%} \times \frac{1}{5.5 \text{ MHz}} = 9.1 \text{ ns} \quad (4)$$

$$t_{DM} = \frac{1}{2 \times 5.5 \text{ MHz}} - 9 \text{ ns} - \frac{16 \text{ ns}_{(F/S=GND)} \times 15 \text{ pF}}{10 \text{ pF}} - 500 \text{ ps} = 57.3 \text{ ns} \quad (5)$$

As long as the set-up and hold time of the LCD driver are each less than 57 ns, the timing budget is met sufficiently.

9.1.7 Typical Application Frequencies

The SN65LVDS302 supports pixel clock frequencies from 4 MHz to 65 MHz over 1, 2, or 3 data lanes. [Table 9-1](#) provides a few typical display resolution examples and shows the number of data lanes necessary to connect the SN65LVDS302 with the display. The blanking overhead is assumed to be 20%. Often, blanking overhead is smaller, resulting in a lower data rate. Furthermore, the examples in the table assumes a display frame refresh rate of 60 Hz. The actual refresh rate may differ depending on the application-processor clock implementation.

Table 9-1. Typical Application Data Rates and Serial Lane Usage

| DISPLAY SCREEN RESOLUTION | VISIBLE PIXEL COUNT | BLANKING OVERHEAD | DISPLAY REFRESH RATE | PIXEL CLOCK FREQUENCY [MHz] | SERIAL DATA RATE PER LANE | | |
|---------------------------|---------------------|-------------------|----------------------|-----------------------------|---------------------------|----------|----------|
| | | | | | 1-ChM | 2-ChM | 3-ChM |
| 176x220 (QCIF+) | 38,720 | 20% | 90 Hz | 4.2 MHz | 125 Mbps | | |
| 240x320 (QVGA) | 76,800 | 20% | 60 Hz | 5.5 MHz | 166 Mbps | | |
| 640x200 | 128,000 | 20% | 60 Hz | 9.2 MHz | 276 Mbps | 138 Mbps | |
| 352x416 (CIF+) | 146,432 | 20% | 60 Hz | 10.5 MHz | 316 Mbps | 158 Mbps | |
| 352x440 | 154,880 | 20% | 60 Hz | 11.2 MHz | 335 Mbps | 167 Mbps | |
| 320x480 (HVGA) | 153,600 | 20% | 60 Hz | 11.1 MHz | 332 Mbps | 166 Mbps | |
| 800x250 | 200,000 | 20% | 60 Hz | 14.4 MHz | 432 Mbps | 216 Mbps | |
| 640x320 | 204,800 | 20% | 60 Hz | 14.7 MHz | 442 Mbps | 221 Mbps | |
| 640x480 (VGA) | 307,200 | 20% | 60 Hz | 22.1 MHz | | 332 Mbps | 221 Mbps |
| 1024x320 | 327,680 | 20% | 60 Hz | 23.6 MHz | | 354 Mbps | 236 Mbps |
| 854x480 (WVGA) | 409,920 | 20% | 60 Hz | 29.5 MHz | | 443 Mbps | 295 Mbps |

Table 9-1. Typical Application Data Rates and Serial Lane Usage (continued)

| DISPLAY SCREEN RESOLUTION | VISIBLE PIXEL COUNT | BLANKING OVERHEAD | DISPLAY REFRESH RATE | PIXEL CLOCK FREQUENCY [MHz] | SERIAL DATA RATE PER LANE | | |
|---------------------------|---------------------|-------------------|----------------------|-----------------------------|---------------------------|-------|----------|
| | | | | | 1-ChM | 2-ChM | 3-ChM |
| 800x600 (SVGA) | 480,000 | 20% | 60 Hz | 34.6 MHz | | | 346 Mbps |
| 1024x768 (XGA) | 786,432 | 20% | 60 Hz | 56.6 MHz | | | 566 Mbps |

9.2 Typical Applications

9.2.1 VGA Application

Figure 9-5 shows a possible implementation of a standard 640x480 VGA display. The LVDS301 interfaces to the SN65LVDS302, which is the corresponding receiver device to deserialize the data and drive the display driver. The pixel clock rate of 22 MHz assumes approximately 10% blanking overhead and 60 Hz display refresh rate. The application assumes 24-bit color resolution. Also shown is how the application processor provides a powerdown (reset) signal for both serializer and the display driver. The signal count over the Flexible Printed Circuit board (FPC) could be further decreased by using the standby option on the SN65LVDS302 and pulling RXEN high with a 30 kΩ resistor to V_{DD}.

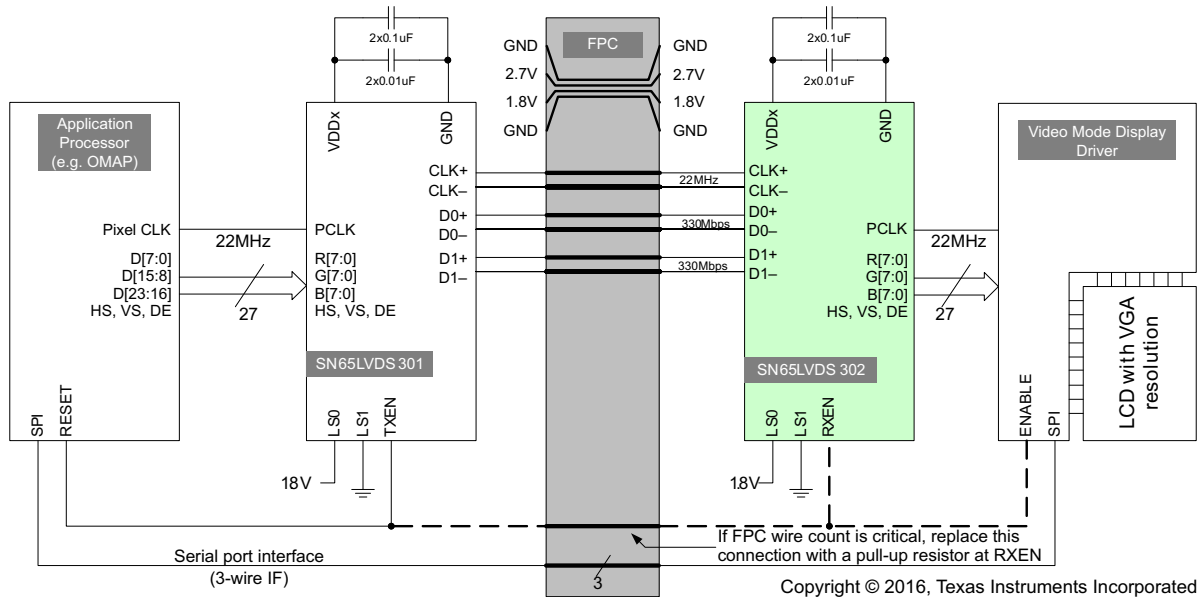


Figure 9-5. Typical VGA Display Application

9.2.1.1 Design Requirements

For this design example, use the parameters listed in Table 9-2 as the input parameters.

Table 9-2. Design Parameters

| DESIGN PARAMETER | EXAMPLE VALUE |
|---|------------------|
| Operating free-air temperature range | -40°C to 85°C |
| Supply voltages, V _{DD} , V _{DDLVD} , V _{DDPLLA} , V _{DDPLLD} | 1.65 V to 1.95 V |
| Magnitude of differential input voltage, V _{ID} | 70 mV to 200 mV |
| Input voltage common mode range, V _{ICM} | 0.6 V to 1.2 V |
| Receiver input skew, 2-channel mode | < 630 ps |

9.2.1.2 Detailed Design Procedure

Configuration and Connection:

- Include a power supply capable of providing the power requirements of the whole system.
- Configure the Application Processor to transmit the RGB data at 22 MHz.
- Configure the transmitter and the SN65LVDS302 to work using two channels.
- Connect the SN65LVDS302 to the LCD display following the same color mapping. See [Section 8.3.1](#) for more information.

9.2.1.2.1 Power-Up and Power-Down Sequences

The SN65LVDS302 does not require a specific power up sequence for the voltage lines. However, TI recommends using the power-up and power-down sequences detailed below.

Power-up sequence (SN65LVDS301 RXEN input initially low):

1. Ramp up LCD power and SN65LVDS302 (approximately 0.5 ms to 10 ms) but keep the backlight turned off.
2. Wait for an additional 0 ms to 200 ms to ensure display noise does not occur.
3. Enable video source output; start sending black video data.
4. Toggle SN65LVDS301 TXEN = V_{IH} .
5. Toggle SN65LVDS302 RXEN = V_{IH} .
6. Send at least 1 ms of black video data. This allows the SN65LVDS301 to be phase locked, and the display to show black data first.
7. Start sending true image data.
8. Enable backlight.

Power-down sequence (SN65LVDS301 RXEN input initially high):

1. Disable LCD backlight and wait for the minimum time specified in the LCD datasheet for the backlight to go low.
2. Switch the video source output from active video data to black image data (all visible pixels turn black) for at least 2 frame times.
3. Set SN65LVDS301 TXEN = GND and wait for 250 ns.
4. Set SN65LVDS302 RXEN = GND and wait for 250 ns.
5. Disable the video output of the video source.
6. Remove power from the LCD panel for lowest system power.

9.2.1.3 Application Curves

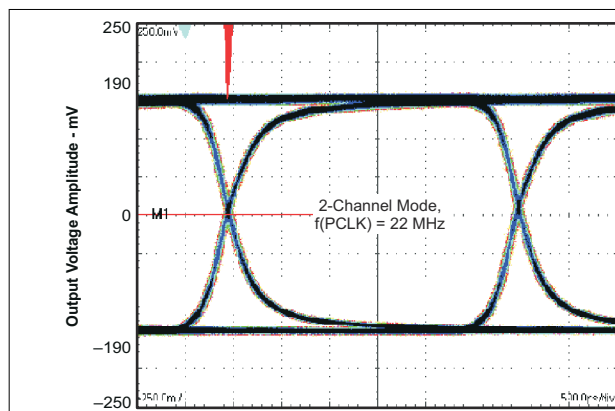


Figure 9-6. VGA 2-Channel Output Waveform

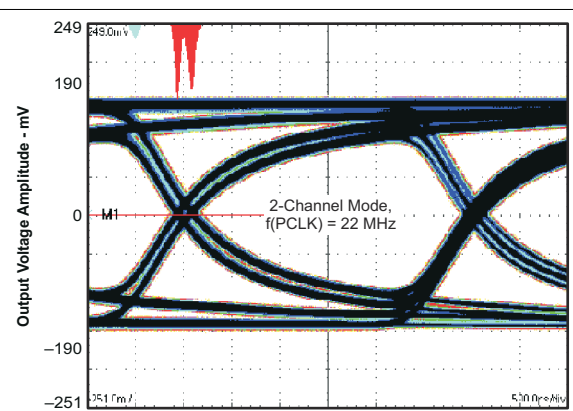


Figure 9-7. VGA 2-Channel Output Waveform

SN65LVDS302

SLLS733E – JUNE 2006 – REVISED OCTOBER 2020

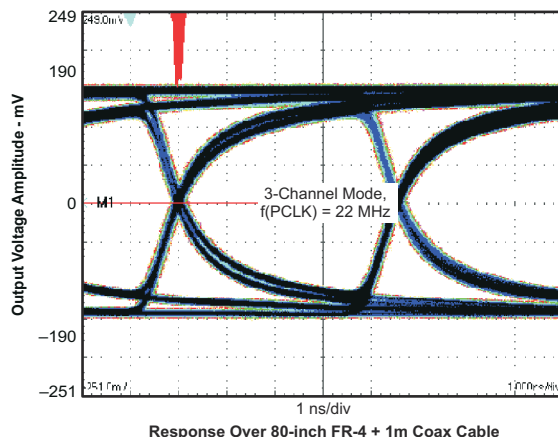
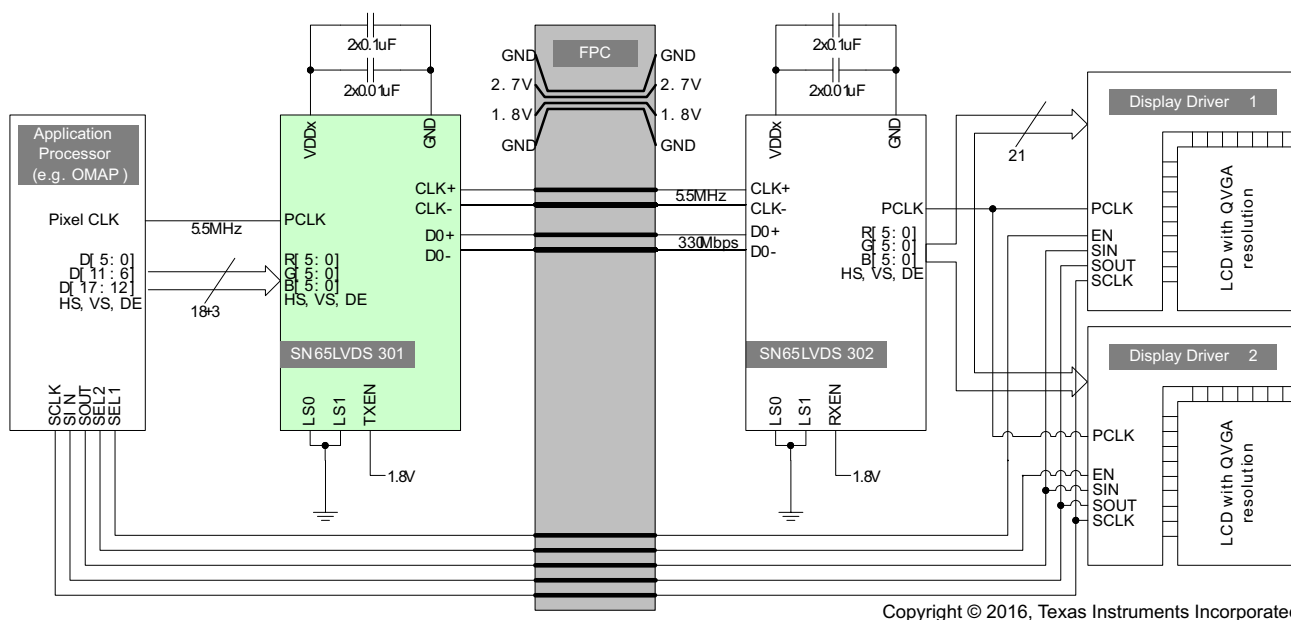


Figure 9-8. VGA3-Channel Output Waveform

9.2.2 Dual LCD-Display Application

The example in [Figure 9-9](#) shows a possible application setup driving two video-mode displays from one application processor. The data rate of 330 Mbps at a pixel clock rate of 5.5 MHz corresponds to a 320x240 QVGA resolution at 60 Hz refresh rate and 10% blanking overhead.



Copyright © 2016, Texas Instruments Incorporated

Figure 9-9. Example Dual-QVGA Display Application

9.2.2.1 Design Requirements

For this design example, use the parameters listed in [Table 9-3](#) as the input parameters.

Table 9-3. Design Parameters

| DESIGN PARAMETER | EXAMPLE VALUE |
|--|------------------|
| Operating free-air temperature range | -40°C to 85°C |
| Supply voltages, V _{DD} , V _{DDLVD5} , V _{DDPLLA} , V _{DDPLLD} | 1.65 V to 1.95 V |
| Magnitude of differential input voltage, V _{ID} | 70 mV to 200 mV |
| Input voltage common mode range, V _{ICM} | 0.6 V to 1.2 V |
| Receiver input skew, 1-channel mode | < 630 ps |

9.2.2.2 Application Curve

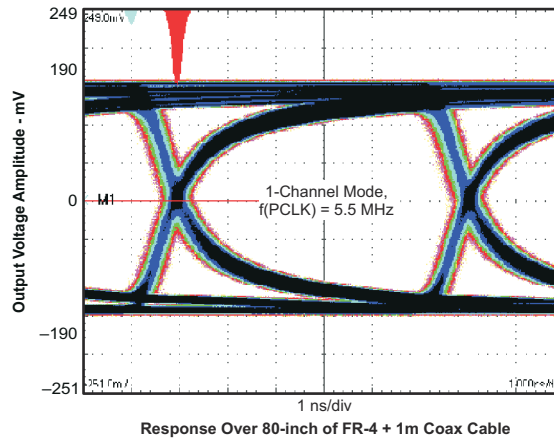


Figure 9-10. QVGA Output Waveform

10 Power Supply Recommendations

To minimize the power supply noise floor, provide good decoupling near the SN65LVDS302 power pins. TI recommends placing one 0.01- μ F ceramic capacitor at each power pin, and two 0.1- μ F ceramic capacitors on each power node. The distance between the SN65LVDS302 and capacitors must be minimized to reduce loop inductance and provide optimal noise filtering. Placing the capacitor underneath the SN65LVDS302 on the bottom of the PCB is often a good choice. A 100-pF ceramic capacitor can be put at each power pin to optimize the EMI performance.

11 Layout

11.1 Layout Guidelines

Use chamfered corners (45° bends) instead of right-angle (90°) bends. Right-angle bends increase the effective trace width, which changes the differential trace impedance creating large discontinuities. A 45° bend is seen as a smaller discontinuity.

When routing traces next to a via or between an array of vias, make sure that the via clearance section does not interrupt the path of the return current on the ground plane below.

Avoid metal layers and traces underneath or between the pads of the LVDS connectors for better impedance matching. Otherwise they cause the differential impedance to drop below 75 Ω and fail the board during TDR testing.

Use solid power and ground planes for 100 Ω impedance control and minimum power noise.

For a multilayer PCB, TI recommends keeping one common GND layer underneath the device and connect all ground terminals directly to this plane. For 100 Ω differential impedance, use the smallest trace spacing possible, which is usually specified by the PCB vendor.

Keep the trace length as short as possible to minimize attenuation.

Place bulk capacitors (10 μ F) close to power sources, such as voltage regulators or where the power is supplied to the PCB.

12 Device and Documentation Support

12.1 Community Resource

12.2 Trademarks

FlatLink™ is a trademark of Texas Instruments.

All trademarks are the property of their respective owners.

13 Mechanical, Packaging, and Orderable Information

The following pages include mechanical, packaging, and orderable information. This information is the most current data available for the designated devices. This data is subject to change without notice and revision of this document. For browser-based versions of this data sheet, refer to the left-hand navigation.

PACKAGING INFORMATION

| Orderable Device | Status (1) | Package Type | Package Drawing | Pins | Package Qty | Eco Plan (2) | Lead finish/ Ball material (6) | MSL Peak Temp (3) | Op Temp (°C) | Device Marking (4/5) | Samples |
|------------------|---------------|--------------|-----------------|------|-------------|-----------------|--------------------------------------|----------------------|--------------|-------------------------|-------------------------|
| SN65LVDS302ZXH | ACTIVE | NFBGA | ZXH | 80 | 576 | RoHS & Green | SNAGCU | Level-3-260C-168 HR | -40 to 85 | LVDS302 | Samples |
| SN65LVDS302ZXHR | ACTIVE | NFBGA | ZXH | 80 | 2500 | RoHS & Green | SNAGCU | Level-3-260C-168 HR | -40 to 85 | LVDS302 | Samples |

(1) The marketing status values are defined as follows:

ACTIVE: Product device recommended for new designs.

LIFEBUY: TI has announced that the device will be discontinued, and a lifetime-buy period is in effect.

NRND: Not recommended for new designs. Device is in production to support existing customers, but TI does not recommend using this part in a new design.

PREVIEW: Device has been announced but is not in production. Samples may or may not be available.

OBSOLETE: TI has discontinued the production of the device.

(2) **RoHS:** TI defines "RoHS" to mean semiconductor products that are compliant with the current EU RoHS requirements for all 10 RoHS substances, including the requirement that RoHS substance do not exceed 0.1% by weight in homogeneous materials. Where designed to be soldered at high temperatures, "RoHS" products are suitable for use in specified lead-free processes. TI may reference these types of products as "Pb-Free".

RoHS Exempt: TI defines "RoHS Exempt" to mean products that contain lead but are compliant with EU RoHS pursuant to a specific EU RoHS exemption.

Green: TI defines "Green" to mean the content of Chlorine (Cl) and Bromine (Br) based flame retardants meet JS709B low halogen requirements of <=1000ppm threshold. Antimony trioxide based flame retardants must also meet the <=1000ppm threshold requirement.

(3) MSL, Peak Temp. - The Moisture Sensitivity Level rating according to the JEDEC industry standard classifications, and peak solder temperature.

(4) There may be additional marking, which relates to the logo, the lot trace code information, or the environmental category on the device.

(5) Multiple Device Markings will be inside parentheses. Only one Device Marking contained in parentheses and separated by a "~" will appear on a device. If a line is indented then it is a continuation of the previous line and the two combined represent the entire Device Marking for that device.

(6) Lead finish/Ball material - Orderable Devices may have multiple material finish options. Finish options are separated by a vertical ruled line. Lead finish/Ball material values may wrap to two lines if the finish value exceeds the maximum column width.

Important Information and Disclaimer:The information provided on this page represents TI's knowledge and belief as of the date that it is provided. TI bases its knowledge and belief on information provided by third parties, and makes no representation or warranty as to the accuracy of such information. Efforts are underway to better integrate information from third parties. TI has taken and continues to take reasonable steps to provide representative and accurate information but may not have conducted destructive testing or chemical analysis on incoming materials and chemicals. TI and TI suppliers consider certain information to be proprietary, and thus CAS numbers and other limited information may not be available for release.

In no event shall TI's liability arising out of such information exceed the total purchase price of the TI part(s) at issue in this document sold by TI to Customer on an annual basis.

TAPE AND REEL INFORMATION

QUADRANT ASSIGNMENTS FOR PIN 1 ORIENTATION IN TAPE


*All dimensions are nominal

| Device | Package Type | Package Drawing | Pins | SPQ | Reel Diameter (mm) | Reel Width W1 (mm) | A0 (mm) | B0 (mm) | K0 (mm) | P1 (mm) | W (mm) | Pin1 Quadrant |
|-----------------|--------------|-----------------|------|------|--------------------|--------------------|---------|---------|---------|---------|--------|---------------|
| SN65LVDS302ZXHR | NFBGA | ZXH | 80 | 2500 | 330.0 | 12.4 | 5.3 | 5.3 | 1.5 | 8.0 | 12.0 | Q1 |

TAPE AND REEL BOX DIMENSIONS


*All dimensions are nominal

| Device | Package Type | Package Drawing | Pins | SPQ | Length (mm) | Width (mm) | Height (mm) |
|-----------------|--------------|-----------------|------|------|-------------|------------|-------------|
| SN65LVDS302ZXHR | NFBGA | ZXH | 80 | 2500 | 336.6 | 336.6 | 31.8 |

TRAY



Chamfer on Tray corner indicates Pin 1 orientation of packed units.

*All dimensions are nominal

| Device | Package Name | Package Type | Pins | SPQ | Unit array matrix | Max temperature (°C) | L (mm) | W (mm) | K0 (µm) | P1 (mm) | CL (mm) | CW (mm) |
|----------------|--------------|--------------|------|-----|-------------------|----------------------|--------|--------|---------|---------|---------|---------|
| SN65LVDS302ZXH | ZXH | NFBGA | 80 | 576 | 16 x 36 | 150 | 315 | 135.9 | 7620 | 8.5 | 8.75 | 8.7 |

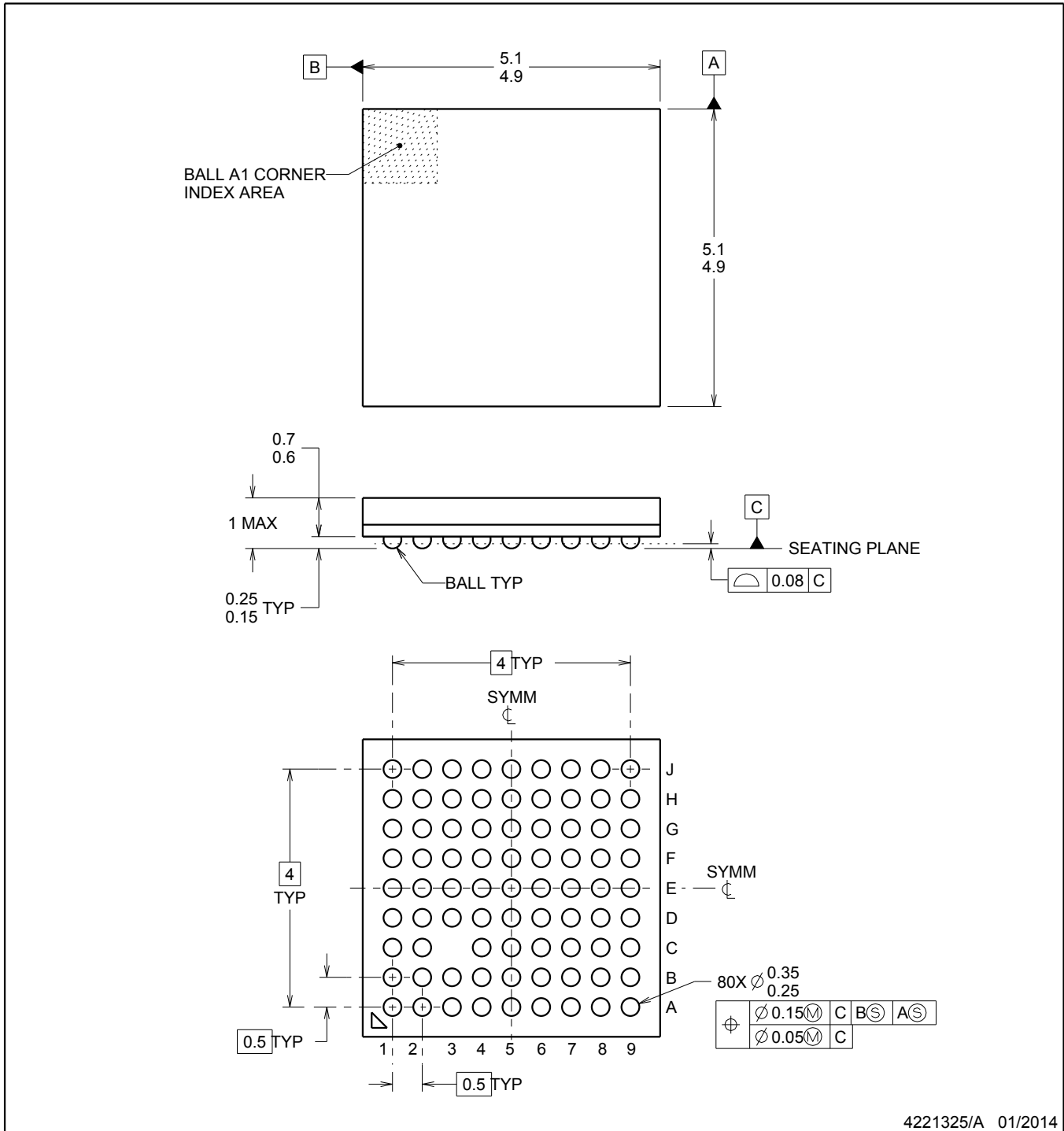


ZXH0080A

PACKAGE OUTLINE

NFBGA - 1 mm max height

BALL GRID ARRAY



4221325/A 01/2014

NOTES:

1. All linear dimensions are in millimeters. Any dimensions in parenthesis is for reference only. Dimensioning and tolerancing per ASME Y14.5M.
2. This drawing is subject to change without notice.
3. This is a Pb-free solder ball design.

EXAMPLE BOARD LAYOUT

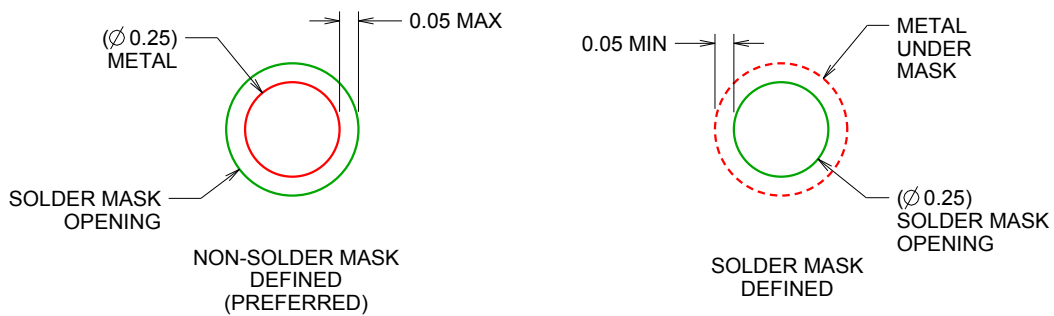
ZXH0080A

NFBGA - 1 mm max height

BALL GRID ARRAY



LAND PATTERN EXAMPLE
SCALE:15X



SOLDER MASK DETAILS
NOT TO SCALE

4221325/A 01/2014

NOTES: (continued)

- Final dimensions may vary due to manufacturing tolerance considerations and also routing constraints. See Texas Instruments Literature No. SBVA017 (www.ti.com/lit/sbva017).

EXAMPLE STENCIL DESIGN

ZXH0080A

NFBGA - 1 mm max height

BALL GRID ARRAY



SOLDER PASTE EXAMPLE
BASED ON 0.1 mm THICK STENCIL
SCALE:20X

4221325/A 01/2014

NOTES: (continued)

4. Laser cutting apertures with trapezoidal walls and rounded corners may offer better paste release.

IMPORTANT NOTICE AND DISCLAIMER

TI PROVIDES TECHNICAL AND RELIABILITY DATA (INCLUDING DATA SHEETS), DESIGN RESOURCES (INCLUDING REFERENCE DESIGNS), APPLICATION OR OTHER DESIGN ADVICE, WEB TOOLS, SAFETY INFORMATION, AND OTHER RESOURCES "AS IS" AND WITH ALL FAULTS, AND DISCLAIMS ALL WARRANTIES, EXPRESS AND IMPLIED, INCLUDING WITHOUT LIMITATION ANY IMPLIED WARRANTIES OF MERCHANTABILITY, FITNESS FOR A PARTICULAR PURPOSE OR NON-INFRINGEMENT OF THIRD PARTY INTELLECTUAL PROPERTY RIGHTS.

These resources are intended for skilled developers designing with TI products. You are solely responsible for (1) selecting the appropriate TI products for your application, (2) designing, validating and testing your application, and (3) ensuring your application meets applicable standards, and any other safety, security, regulatory or other requirements.

These resources are subject to change without notice. TI grants you permission to use these resources only for development of an application that uses the TI products described in the resource. Other reproduction and display of these resources is prohibited. No license is granted to any other TI intellectual property right or to any third party intellectual property right. TI disclaims responsibility for, and you will fully indemnify TI and its representatives against, any claims, damages, costs, losses, and liabilities arising out of your use of these resources.

TI's products are provided subject to [TI's Terms of Sale](#) or other applicable terms available either on [ti.com](https://www.ti.com) or provided in conjunction with such TI products. TI's provision of these resources does not expand or otherwise alter TI's applicable warranties or warranty disclaimers for TI products.

TI objects to and rejects any additional or different terms you may have proposed.

Mailing Address: Texas Instruments, Post Office Box 655303, Dallas, Texas 75265
Copyright © 2023, Texas Instruments Incorporated