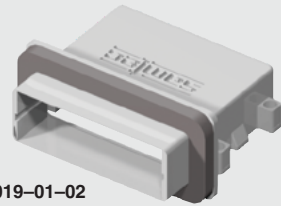
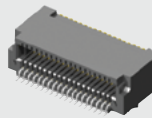


ERI8-019-S-D-RA



ERC-019-01-02

ERI8, ERC SERIES

(0.80 mm) .0315"

HIGH-SPEED I/O SYSTEM

ERI8 Mates with:
EPLSP

SPECIFICATIONS

For complete specifications and recommended PCB layouts see www.samtec.com?ERI8

Insulator Material:
Black LCP

Terminal Material:
BeCu

Plating:
Au or Sn over

50 μ" (1.27 μm) Ni

Current Rating:
1.7 A per pin

(2 pins powered)

Voltage Rating:
225 VAC/320 VDC

Operating Temp Range:
-55 °C to +125 °C

Lead-Free Solderable:
Yes

SMT Lead Coplanarity:
(0.10 mm) .004" max

RoHS Compliant:
Yes

Notes:

Active equalization reference design for Eye Speed® I/O system see www.samtec.com?EPLSP

Some lengths, styles and options are non-standard, non-returnable.



-019
= 9 Pairs, 5 Power, 19 positions

-031
= 17 Pairs, 5 Power, 31 positions

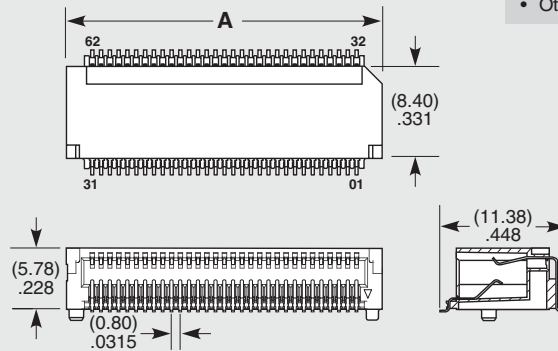
-S
= 30 μ" (0.76 μm) Gold on contact, Matte Tin on tail

-TR
= Tape & Reel Packaging

ALSO AVAILABLE
(MOQ Required)

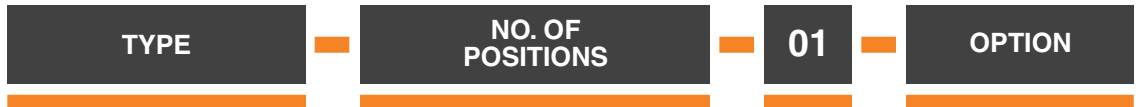
- Other platings

NO. OF POSITIONS	A
-019	(19.08) .751
-031	(28.68) 1.13



SPECIFICATIONS

For complete specifications and recommended PCB layouts see www.samtec.com?ERC



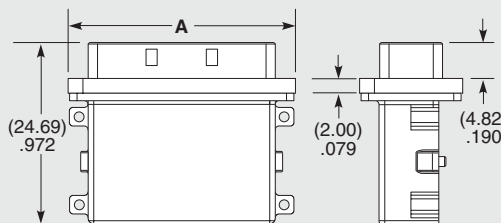
ERC
= Cage

-019, -031
= Number of Positions

-01
= Without Gasket

-02
= With Gasket

NO. OF POSITIONS	A
-019	(30.55) 1.203
-031	(40.15) 1.58



Due to technical progress, all designs, specifications and components are subject to change without notice.