

Light is OSRAM

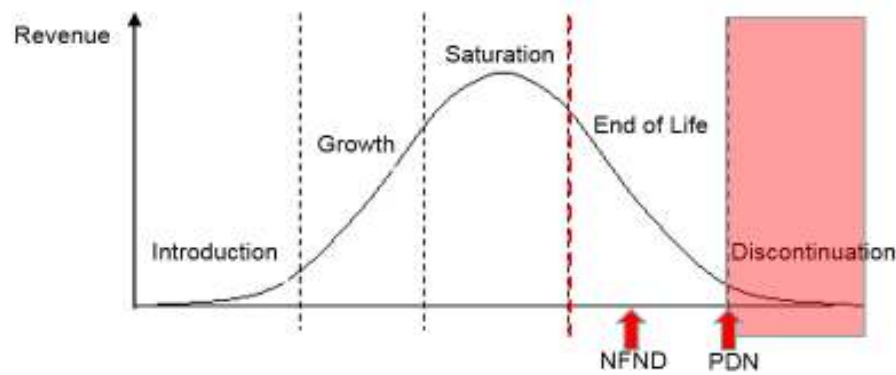
## Product Discontinuation (acc. JEDEC J-STD-048) OS-PD-2018-082

01-Nov-2018

---

<b>Last order:</b>	30-May-2019
<b>Last delivery:</b>	01-Nov-2019
<b>Reason:</b>	Phase out of TOPLED Compact 3528 & Lightbars Phase out of dormant ordering codes for OSRAM OSTAR Projection Power & CERAMOS

---



Please direct your feedback to your local Sales office.

DISCONTINUED				NEW (REPLACEMENT)			
Device	Ordering Code	Function	Brand	Device	Datasheet Ordering Code	Function	Brand
<b>CUW JHCR.SB</b>	all			<b>KW DPLS31.SB</b>			
CUW JHCR.SB-LQMP-E5M6-37-42E2-600-R18-Z	Q65111A9170	LED	TOPLED Compact 3528	KW DPLS31.SB-5H5J-E5P7-EG-1-120-R18	Q65111A7054	LED	SYNIOS E4014
CUW JHCR.SB-LQMP-E5M6-37-62G2-600-R18-Z	Q65111A6338	LED	TOPLED Compact 3528	KW DPLS31.SB-5H5J-E5P7-EG-1-120-R18	Q65111A7054	LED	SYNIOS E4014
CUW JHCR.SB-LRMP-I4K6-46-1-600-R18-S-XX	Q65111A8005	LED	TOPLED Compact 3528	KW DPLS31.SB-5H5J-E5P7-EG-1-120-R18	Q65111A7054	LED	SYNIOS E4014
CUW JHCR.SB-LRMP-J6M6-56-62G2	Q65111A7671	LED	TOPLED Compact 3528	KW DPLS31.SB-5H5J-E5P7-EG-1-120-R18	Q65111A7054	LED	SYNIOS E4014
CUW JHCR.SB-LSMP-F4J6-46-42C2-R18-S-XX	Q65112A2696	LED	TOPLED Compact 3528	KW DPLS31.SB-5H5J-E5P7-EG-1-120-R18	Q65111A7054	LED	SYNIOS E4014
CUW JHCR.SB-LSMP-G4K6-46-42C2-R18-S-XX	Q65112A3365	LED	TOPLED Compact 3528	KW DPLS31.SB-5H5J-E5P7-EG-1-120-R18	Q65111A7054	LED	SYNIOS E4014
CUW JHCR.SB-LSMP-H4L6-46-42C2-R18-S-XX	Q65112A1536	LED	TOPLED Compact 3528	KW DPLS31.SB-5H5J-E5P7-EG-1-120-R18	Q65111A7054	LED	SYNIOS E4014
CUW JHCR.SB-LTMP-E6I6-35-42E2-600-R18-XX	Q65112A0118	LED	TOPLED Compact 3528	KW DPLS31.SB-5H5J-E5P7-EG-1-120-R18	Q65111A7054	LED	SYNIOS E4014
<b>M163204001N</b>	all						
M163204001N_____T10_	Q65112A3122	Lightbar	Lightbar	no replacement			
<b>M173954001B</b>	all						
M173954001B_____T10	Q65112A3363	Lightbar	Lightbar	no replacement			
<b>M173954001A</b>	all						
M173954001A_____T10	Q65112A3364	Lightbar	Lightbar	no replacement			
<b>LE A P3W 01</b>	<b>Single Q#</b>						
LE A P3W 01-TXTY-3-0-F00-T01-LM	Q65112A0354	LED	OSRAM OSTAR Projection Power	LE A P3W 01-TXUX-23-0-F00-T01	Q65111A8264	LED	OSRAM OSTAR Projection Power
<b>LE A P2W</b>	<b>Single Q#</b>						
LE A P2W-SUTQ-2-0-F00-T01-XX	Q65111A8691	LED	OSRAM OSTAR Projection Power	LE A P2W-SYTX-23-0-F00-T01	Q65111A8291	LED	OSRAM OSTAR Projection Power
<b>CW CBLPM1.E1</b>	<b>Single Q#</b>						
CW CBLPM1.E1-M1MZ-R	Q65111A7537	LED	CERAMOS	CW CBLPM1.E1-MXMZ-R	Q65111A6933	LED	CERAMOS
<b>LW Y8SG</b>	<b>Single Q#</b>						
LW Y8SG-V1V2-56L-1-20-R18-Z	Q65110A8371	LED	Micro SIDELED	LW Y8SG-V1AA-3K6L-1-20-R18-Z	Q65110A7980	LED	Micro SIDELED

## *Products Affected by Product Discontinuation Notification*

**Number:** OS-PD-2018-082

**Name:** Phase out of TOPLED Compact 3528 & Lightbars

Phase out of dormant ordering codes for OSRAM OSTAR Projection Power & CERAMOS

**Release Date:** 11/1/2018

**Last Order:** 5/30/2019

**Last Delivery:** 11/1/2019

### DISCONTINUED

### NEW (REPLACEMENT)

<u>Product</u>	<u>QNumber</u>	<u>QNumber Description</u>	<u>Part Number</u>	<u>Product</u>	<u>QNumber</u>	<u>QNumber Description</u>	<u>Part Number</u>
CUW JHCR.	Q65111A6338	CUW JHCR.SB-LQMP-E5M6-37-62G2-600-R1	CUW JHCR.SB-LQMP-E4N6-27-1	KW DPLS31.	Q65111A7054	KW DPLS31.SB-5H5J-E5P7-EG-1-120-R18	KW DPLS31.SB-5H5J-E5P7-EG-1
CUW JHCR.	Q65111A7671	CUW JHCR.SB-LRMP-J6M6-56-62G2	CUW JHCR.SB-LRMP-J6M6-56-62G2	KW DPLS31.	Q65111A7054	KW DPLS31.SB-5H5J-E5P7-EG-1-120-R18	KW DPLS31.SB-5H5J-E5P7-EG-1
CUW JHCR.	Q65111A8005	CUW JHCR.SB-LRMP-I4K6-46-1-600-R18-S-X	CUW JHCR.SB-LRMP-I4K6-46-1-S-X	KW DPLS31.	Q65111A7054	KW DPLS31.SB-5H5J-E5P7-EG-1-120-R18	KW DPLS31.SB-5H5J-E5P7-EG-1
CUW JHCR.	Q65111A9170	CUW JHCR.SB-LQMP-E5M6-37-42E2-600-R1	CUW JHCR.SB-LQMP-E5M6-37-42E	KW DPLS31.	Q65111A7054	KW DPLS31.SB-5H5J-E5P7-EG-1-120-R18	KW DPLS31.SB-5H5J-E5P7-EG-1
CUW JHCR.	Q65112A0118	CUW JHCR.SB-LTMP-E6I6-35-42E2-600-R18-	CUW JHCR.SB-LTMP-E6I6-35-42E2-	KW DPLS31.	Q65111A7054	KW DPLS31.SB-5H5J-E5P7-EG-1-120-R18	KW DPLS31.SB-5H5J-E5P7-EG-1
CUW JHCR.	Q65112A1536	CUW JHCR.SB-LSMP-H4L6-46-42C2-R18-S-X	CUW JHCR.SB-LSMP-H4L6-46-42C2	KW DPLS31.	Q65111A7054	KW DPLS31.SB-5H5J-E5P7-EG-1-120-R18	KW DPLS31.SB-5H5J-E5P7-EG-1
CUW JHCR.	Q65112A2696	CUW JHCR.SB-LSMP-F4J6-46-42C2-R18-S-X		KW DPLS31.	Q65111A7054	KW DPLS31.SB-5H5J-E5P7-EG-1-120-R18	KW DPLS31.SB-5H5J-E5P7-EG-1
CUW JHCR.	Q65112A3365	CUW JHCR.SB-LSMP-G4K6-46-42C2-R18-S-		KW DPLS31.	Q65111A7054	KW DPLS31.SB-5H5J-E5P7-EG-1-120-R18	KW DPLS31.SB-5H5J-E5P7-EG-1
CW CBLPM1	Q65111A7537	CW CBLPM1.E1-M1MZ-R	CW CBLPM1.E1-M1MZ-R-XX	CW CBLPM1	Q65111A6933	CW CBLPM1.E1-MXMZ-R	CW CBLPM1.E1-MXMZ-R-0-A00-R18
LE A P2W	Q65111A8691	LE A P2W-SUTQ-2-0-F00-T01-XX	LE A P2W-SUTQ-2-T01-XX	LE A P2W	Q65111A8291	LE A P2W-SYTX-23-0-F00-T01	LE A P2W-SYTX-23
LE A P3W 01	Q65112A0354	LE A P3W 01-TXTY-3-0-F00-T01-LM	LE A P3W 01-TXTY-3-LM	LE A P3W 01	Q65111A8264	LE A P3W 01-TXUX-23-0-F00-T01	LE A P3W 01-TXUX-23
LW Y8SG	Q65110A8371	LW Y8SG-V1V2-56L-1-20-R18-Z	LW Y8SG-V1V2-56L-1-S-Z	LW Y8SG	Q65110A7980	LW Y8SG-V1AA-3K6L-1-20-R18-Z	LW Y8SG-V1AA-3K6L-Z
M163204001	Q65112A3122	M163204001N_____T10_		no replaceme		no replacement	
M173954001	Q65112A3364	M173954001A_____T10		no replaceme		no replacement	
M173954001	Q65112A3363	M173954001B_____T10		no replaceme		no replacement	