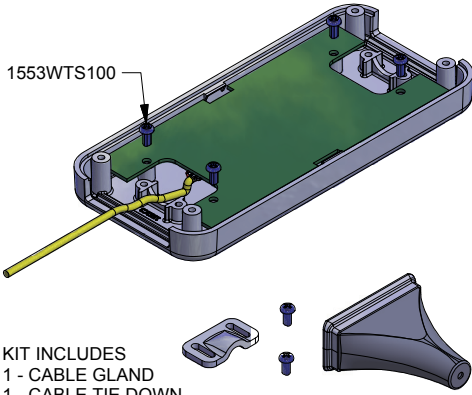


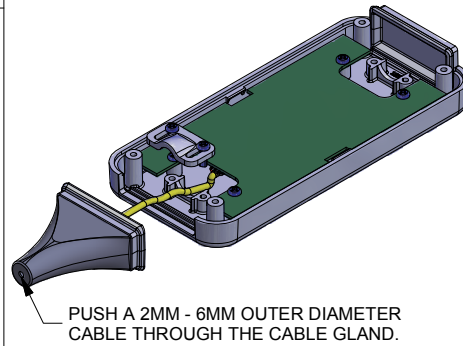
# CABLE INSTALLATION GUIDE.

1. INSTALL COMPONENTS INTO LID.  
(USE 1553WTS100 #2 X 3/16" PLASTITE SELF-TAPPING SCREW NOT SUPPLIED.)  
TORQUE SCREWS TO 15-20 cN-m [21-28 oz-lbf]

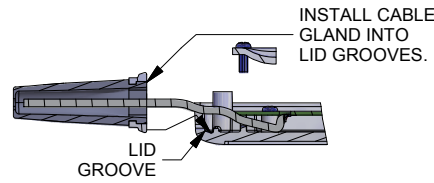


KIT INCLUDES  
1 - CABLE GLAND  
1 - CABLE TIE DOWN  
2 - #2 X 1/4" SELF - TAPPING SCREW

2.



PUSH A 2MM - 6MM OUTER DIAMETER CABLE THROUGH THE CABLE GLAND.

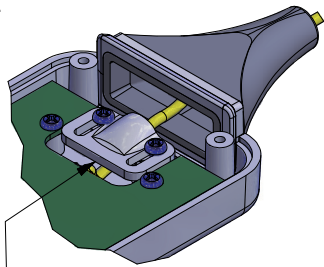


INSTALL CABLE GLAND INTO LID GROOVES.

LID GROOVE

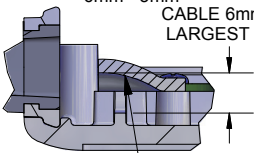
3.

## CABLE TIE ORIENTATION



ORIENT CABLE TIE DOWN AS PER OPTION 1 OR 2, THEN LIGHTLY TIGHTEN SUPPLIED SCREWS. SLIDE THE TIE DOWN TOWARDS CABLE GLAND TO CLAMP WIRE. THEN TORQUE SCREWS TO 20-25 cN-m. [28-35 oz-lbf]

OPTION 1  
CABLE OD  
6mm - 3mm

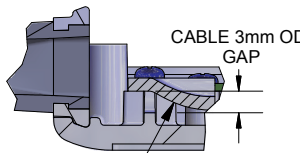


CABLE 6mm OD  
LARGEST GAP

CABLE TIE  
BUMP UP

CABLE 3mm OD  
GAP

OPTION 2  
CABLE OD  
3mm - 2mm

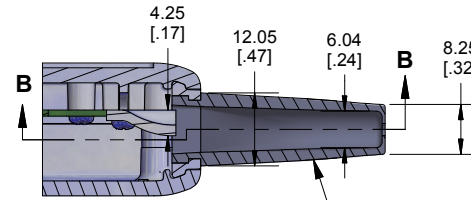
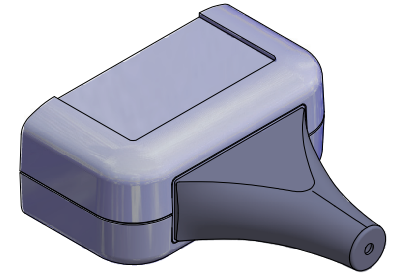
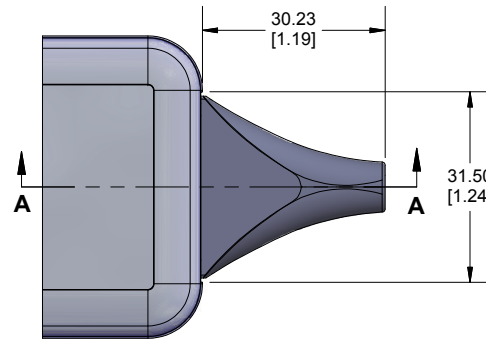
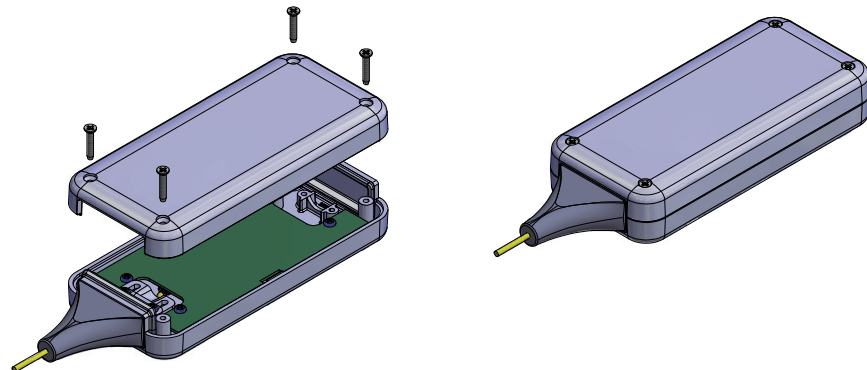


CABLE 3mm OD  
GAP

CABLE TIE  
BUMP DOWN

CABLE 1.5mm OD  
SMALLEST GAP

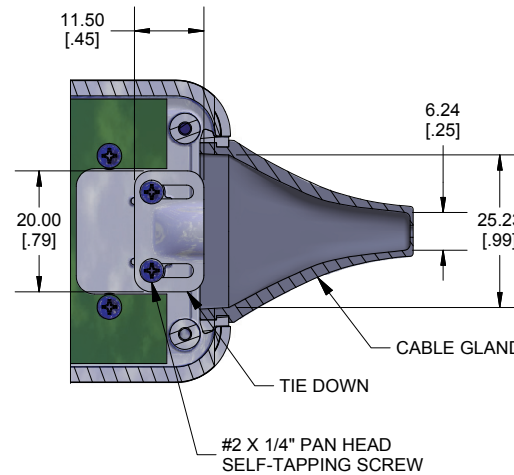
4. INSTALL THE BOTTOM HALF OF THE ENCLOSURE TO THE RECOMMENDED TORQUE OF 15-20 cN-m [21-28 oz-lbf]



SECTION A-A

ACCEPTS A 2MM - 6MM OUTER DIAMETER CABLE

CABLE GLAND IS MADE FROM FLAME RETARDANT (UL94-V0) FLEXIBLE TPE & (UL94-V0) POLYCARBONATE MATERIAL



SECTION B-B

#2 X 1/4" PAN HEAD SELF-TAPPING SCREW

### NOTE

Purchased assembly includes cable gland, tie down and 2 tie down screws. Cable gland molded from PC (UL94-V0) plastic and TPE (UL94-V0). Tie down molded from PC (UL94-V0). PCB Layout Drawings and 3D Models also available. Refer to enclosure drawing for dimensions

1552	
1552 ACCESSORIES	
1552C Cable gland Kit	1552CPGKITGY (Grey)
	1552CPGKITBK (Black)

**HAMMOND MANUFACTURING**  
1552C CABLE GLAND KIT  
INSTRUCTIONS  
www.hammondmfg.com

REV 15.10.2019