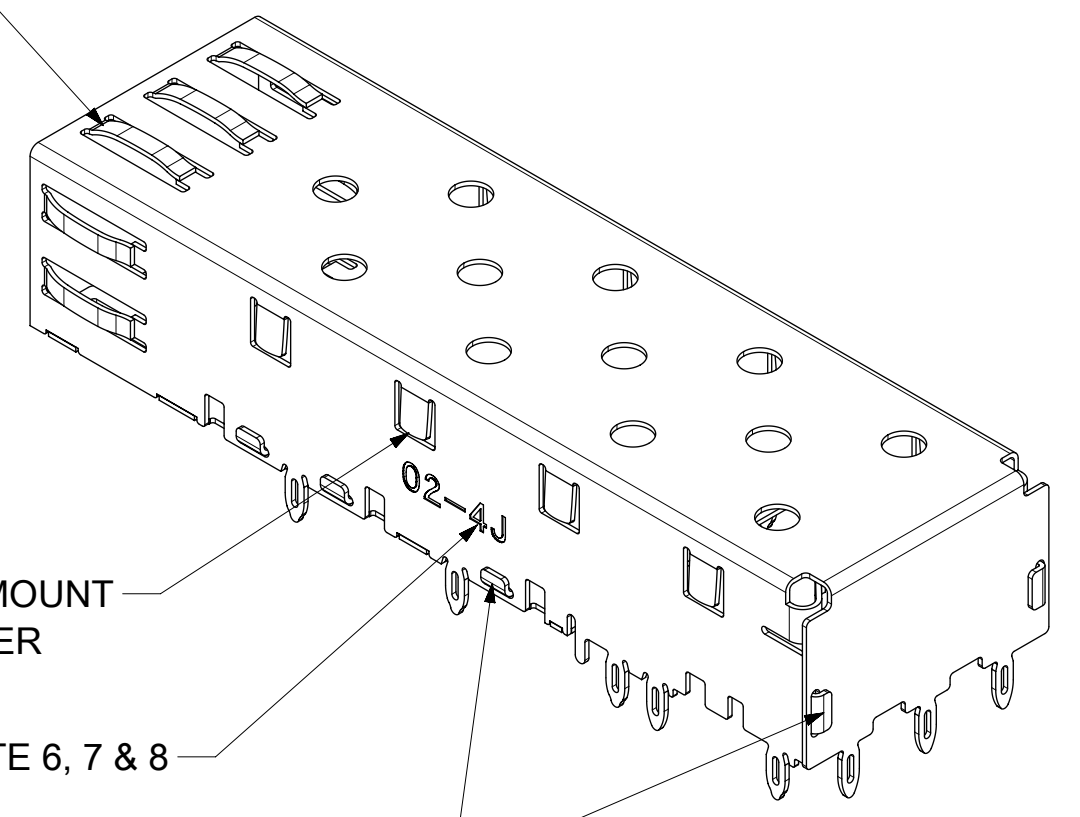


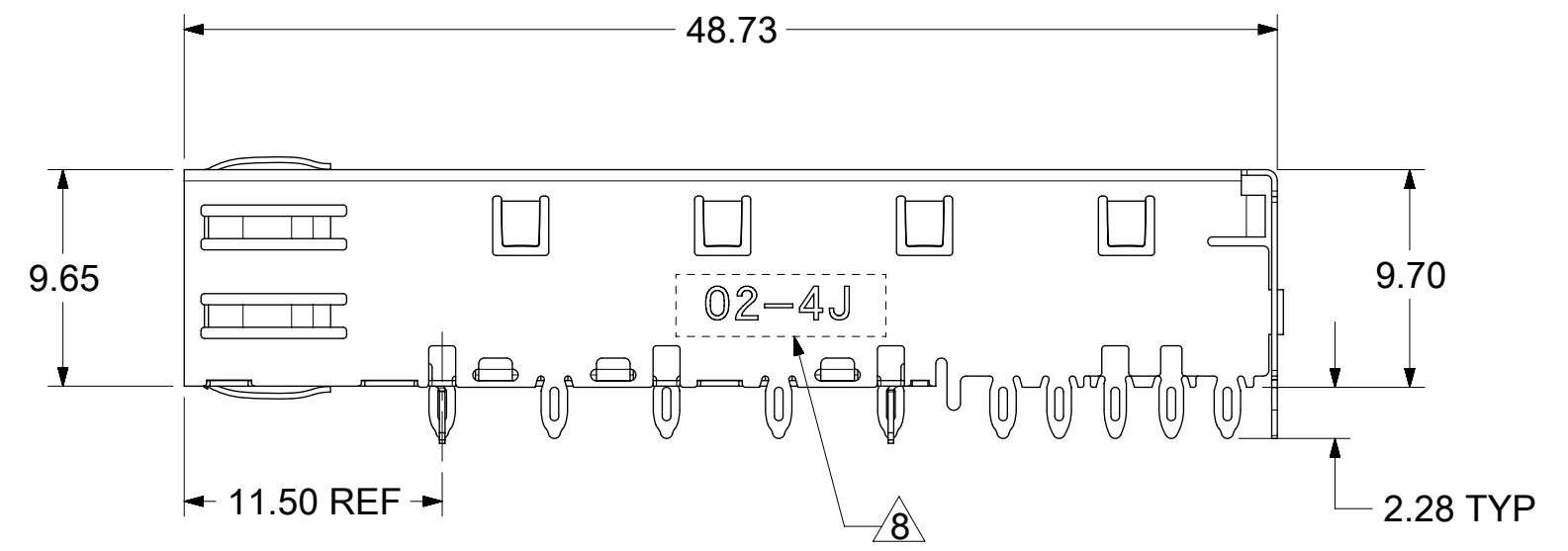
SPRING FINGER GASKET WITH TWO POINTS OF CONTACT. COMPLIES WITH (SFP) MSA BOARD AND BEZEL LOCATIONS.



TABS USED TO MOUNT LIGHT PIPE COVER

SEE NOTE 6, 7 & 8

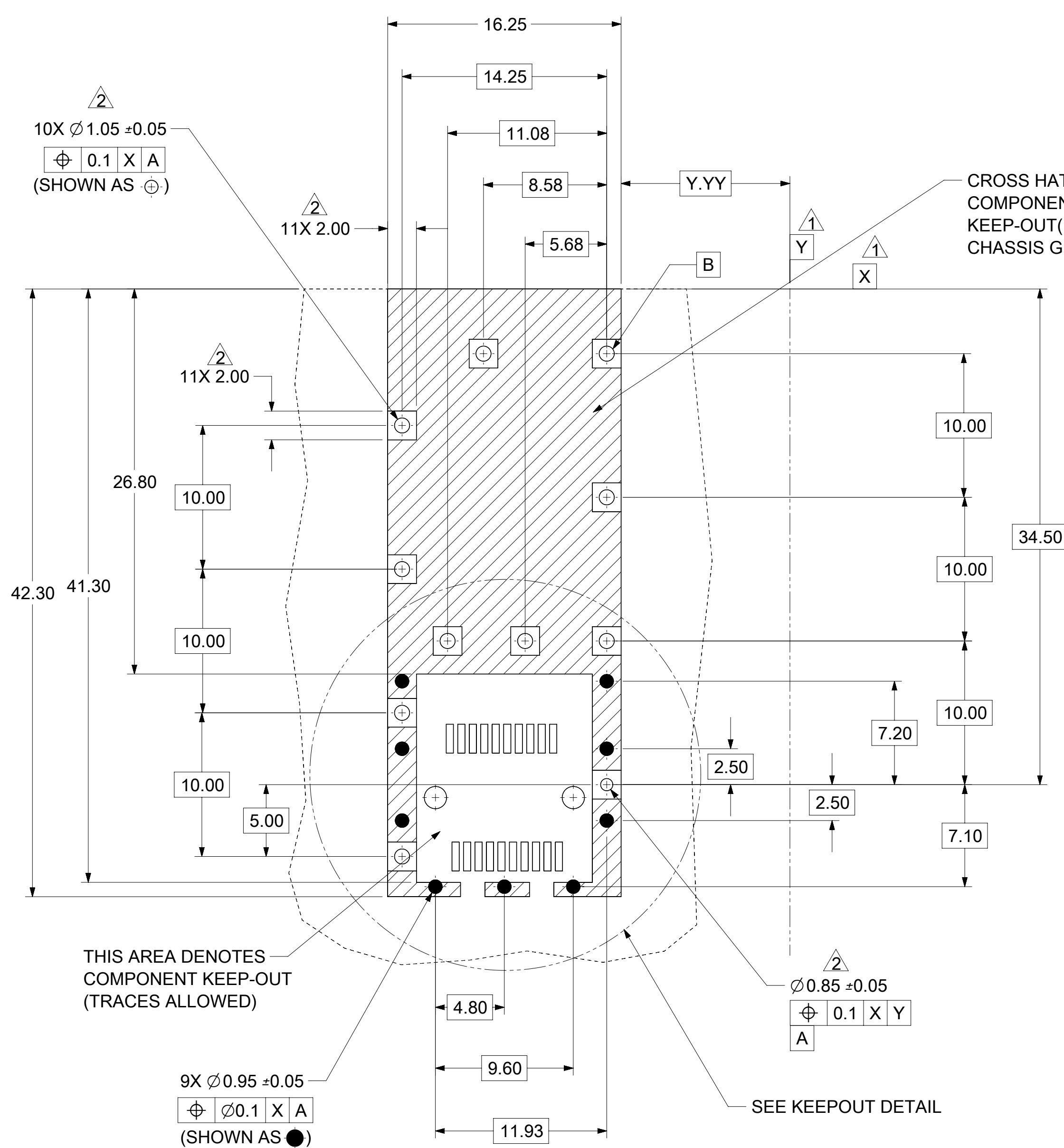
ONE PIECE DESIGN SECURLY FASTENED



NOTES:

1. PRESS FIT LEGS, 2.28mm LONG.
1.57mm MINIMUM PCB THICKNESS.
2. THIS CAGE IS FOR SINGLE SIDED USE ONLY.
3. CAN BE USED WITH THE FOLLOWING LIGHT PIPE PART NUMBERS:
747260001 - LIGHT PIPE FROM BACK TO TOP
(REFER TO DOCUMENT SD-74726-001)
747260002 - LIGHT PIPE FROM SIDE TO TOP
(REFER TO DOCUMENT SD-74726-002)
4. MATERIAL: COPPER ALLOY
PLATING: PRE-PLATED WITH NICKEL
5. NO RoHS EXEMPTIONS.
6. REVISION LETTER IS FOLLOWING MOLEX 3D MODEL.
7. INSERT TO CHANGE ENGRAVING FOR LAST TWO DIGITS OF PART NUMBER OR 3D REVISION.
8. INSERT TO IDENTIFY ADDITIONAL TOOLING STARTING WITH TOOL #2 AS FOLLOWS:
LAST TWO DIGITS OF PART NUMBER, TOOL NUMBER AND ENGINEERING DRAWING REVISION LETTER(INTERNAL USE).
(E.G., 02-4J)

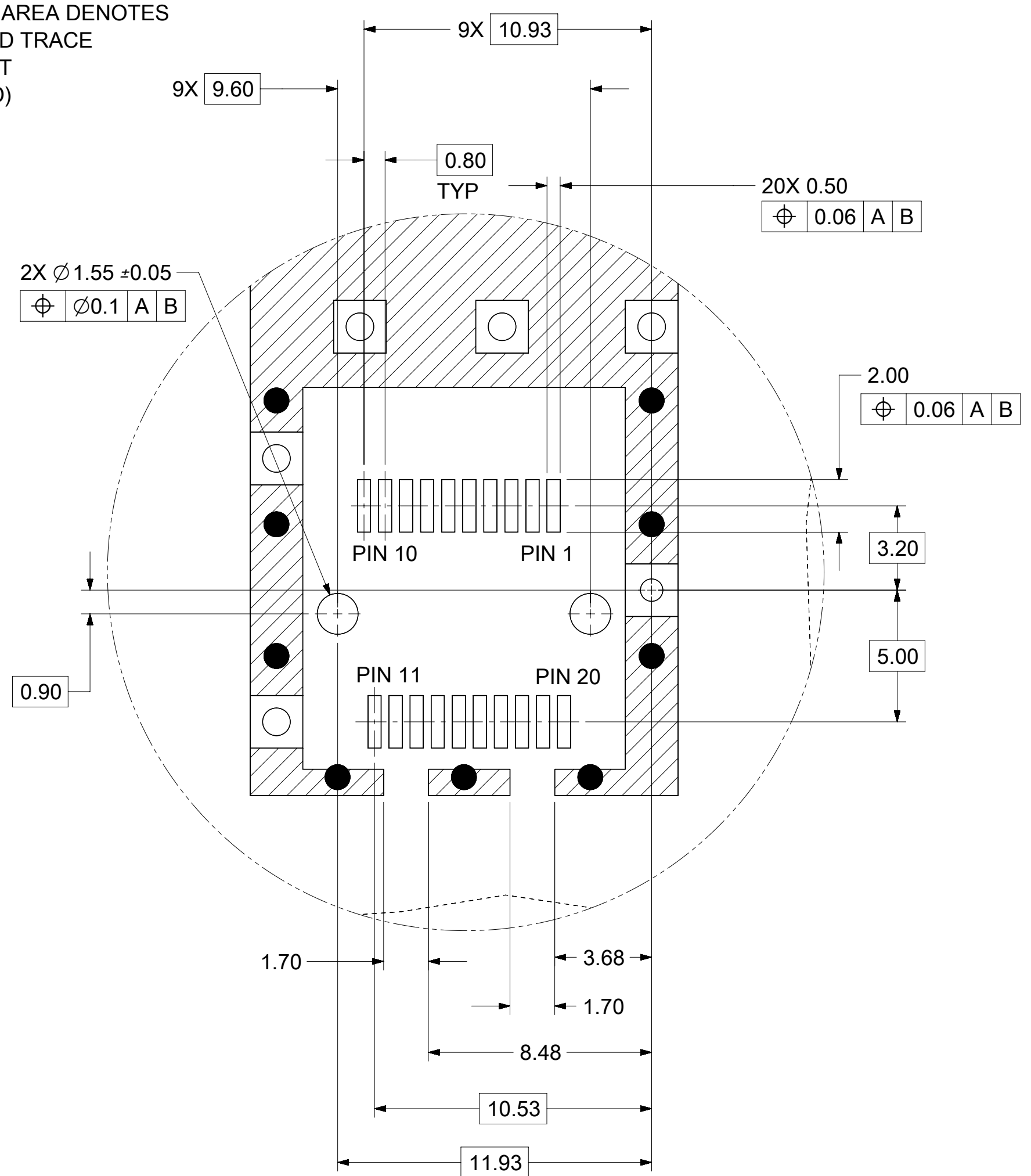
QUALITY SYMBOLS		THIS DRAWING CONTAINS INFORMATION THAT IS PROPRIETARY TO MOLEX ELECTRONIC TECHNOLOGIES, LLC AND SHOULD NOT BE USED WITHOUT WRITTEN PERMISSION										
▽ = 0	▽ = 0	SEE REVISION TABLE EC NO: 169609 DRWN: MKEMPEGOWDA CHKD: EWANG07 REV / APPR: RCHEN08	2017/12/11 2017/12/15 2017/12/16	GENERAL TOLERANCES (UNLESS SPECIFIED)		DIMENSION UNITS	SCALE					
▽ = 0	▽ = 0			ANGULAR TOL ± 1.0 °		mm	3:1					
▽ = 0	▽ = 0			4 PLACES ±	DRWN BY		DATE		SFP ONE PIECE CAGE PRESS-FIT (0.090 LEGS)			
▼ = 0	▽ = 0			3 PLACES ±	MKEMPEGOWDA		2017/12/11					
▽ = 0	▽ = 0			2 PLACES ± 0.13	CHKD BY		DATE		PRODUCT CUSTOMER DRAWING			
▽ = 0	▽ = 0			1 PLACE ± 0.25	EWANG07		2017/12/15					
⊠ = 0	■ = 0	0 PLACES ±	APPR BY		DATE		SERIES	MATERIAL NUMBER	CUSTOMER			
▽ = 0	▽ = 0	DRAFT WHERE APPLICABLE MUST REMAIN WITHIN DIMENSIONS	RCHEN08		2017/12/16		74737	747370002				
			DRAWING SIZE		THIRD ANGLE PROJECTION		DOCUMENT NUMBER		DOC TYPE	DOC PART	SHEET NUMBER	
			C				747370002		PSD	ASY	1 OF 4	



CROSS HATCHED AREA DENOTES COMPONENTS AND TRACE KEEP-OUT (EXCEPT CHASSIS GROUND)

THIS AREA DENOTES COMPONENT KEEP-OUT (TRACES ALLOWED)

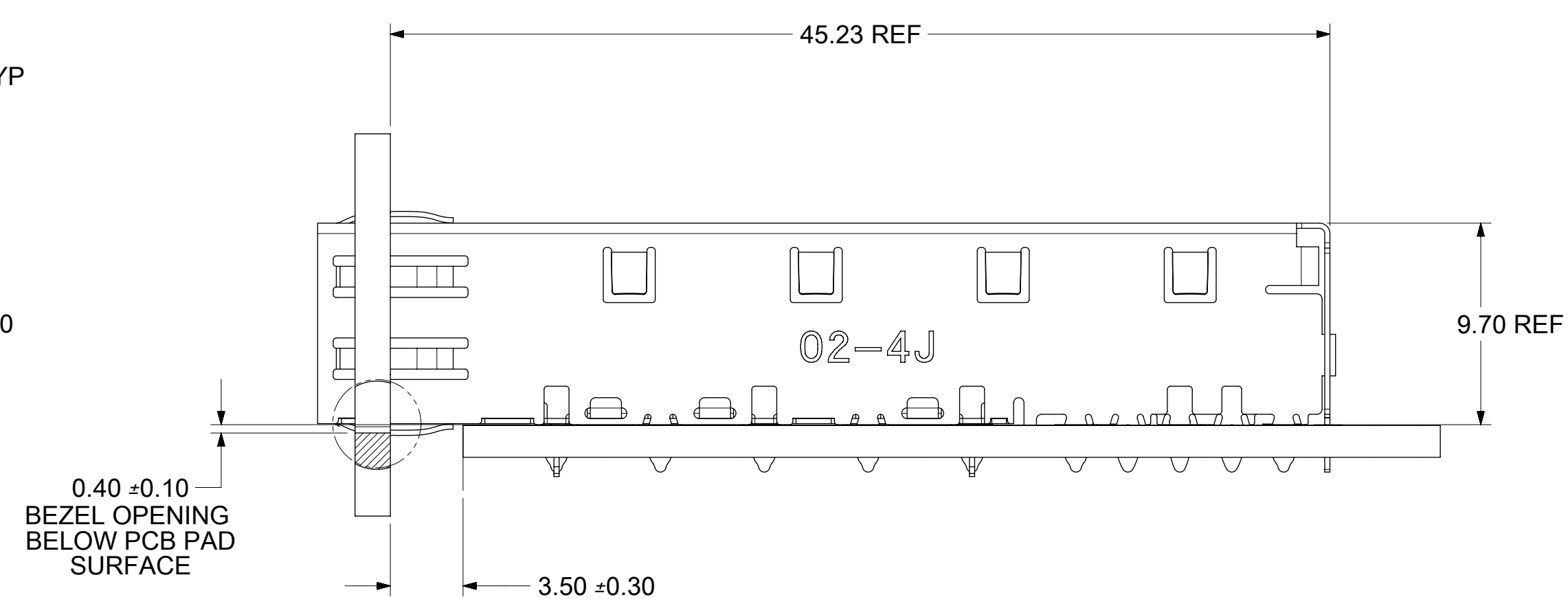
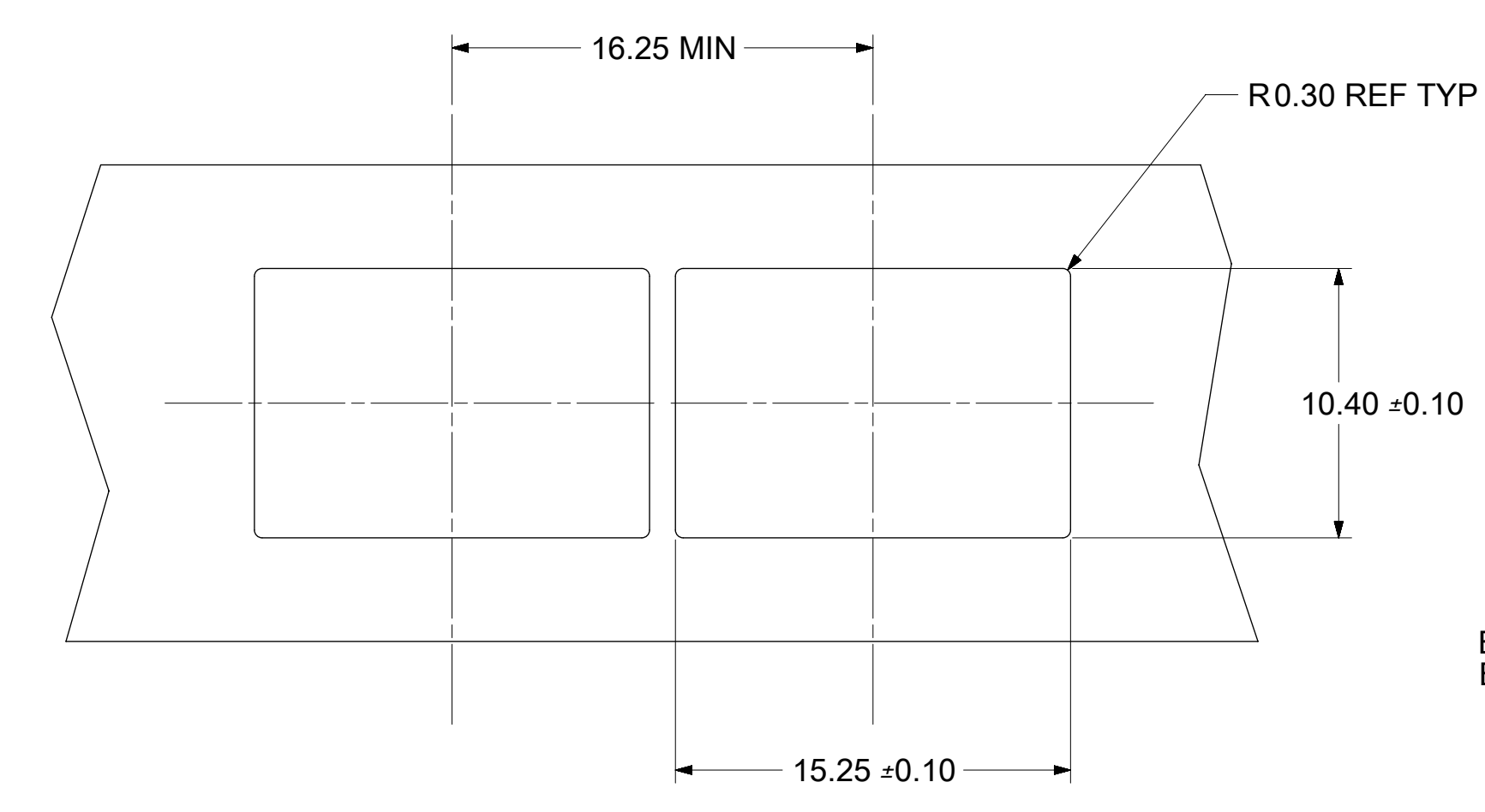
SEE KEEPOUT DETAIL



KEEPOUT DETAIL SCALE 6:1

- 1 DATUM AND BASIC DIMENSIONS ESTABLISHED BY CUSTOMER.
- 2 PADS AND VIAS ARE CHASSIS GROUND.
- 3 HOLE LAYOUT SHOWN IS FOR SINGLE SIDED MOUNTING ONLY.
- 4. CONNECTOR PAD LAYOUT PER SFP MSA, WILL ACCOMMODATE MOLEX CONNECTOR SERIES 74441 OR EQUIVALENT.

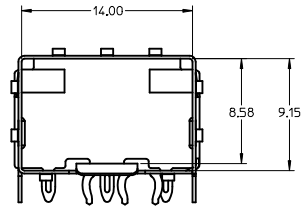
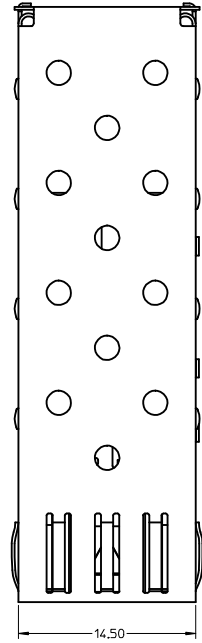
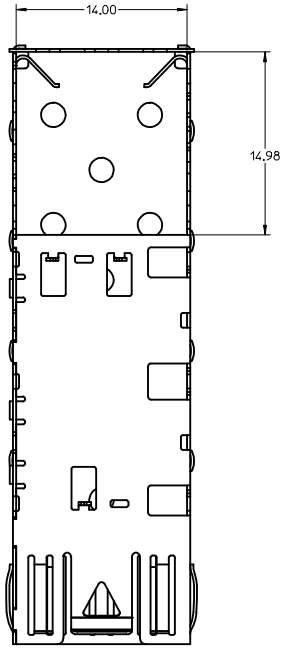
QUALITY SYMBOLS		THIS DRAWING CONTAINS INFORMATION THAT IS PROPRIETARY TO MOLEX ELECTRONIC TECHNOLOGIES, LLC AND SHOULD NOT BE USED WITHOUT WRITTEN PERMISSION													
▽ = 0	▽ = 0	SEE REVISION TABLE EC NO: 169609 DRWN: MKEMPEGOWDA CHKD: EWANG07 REV / APPR: RCHEN08	GENERAL TOLERANCES (UNLESS SPECIFIED)				DIMENSION UNITS		SCALE						
▽ = 0	▽ = 0		ANGULAR TOL ± 1.0 °				mm		4:1						
▽ = 0	▽ = 0		4 PLACES ±		MKEMPEGOWDA		DATE		2017/12/11		SFP ONE PIECE CAGE PRESS-FIT (0.090 LEGS)				
▽ = 0	▽ = 0		3 PLACES ±		CHKD BY		DATE		2017/12/15						
▽ = 0	▽ = 0		2 PLACES ± 0.13		EWANG07		DATE		2017/12/16		PRODUCT CUSTOMER DRAWING				
▽ = 0	▽ = 0		1 PLACE ± 0.25		RCHEN08		DATE		2017/12/16		SERIES		MATERIAL NUMBER		CUSTOMER
▽ = 0	▽ = 0	0 PLACES ±		DRAFT WHERE APPLICABLE MUST REMAIN WITHIN DIMENSIONS		DRAWING SIZE		THIRD ANGLE PROJECTION		74737		747370002		DOCUMENT NUMBER	
▽ = 0	▽ = 0	J		C		C		C		747370002		DOC TYPE		PSD	
▽ = 0	▽ = 0	J		C		C		C		747370002		DOC PART		ASY	
▽ = 0	▽ = 0	J		C		C		C		747370002		SHEET NUMBER		2 OF 4	



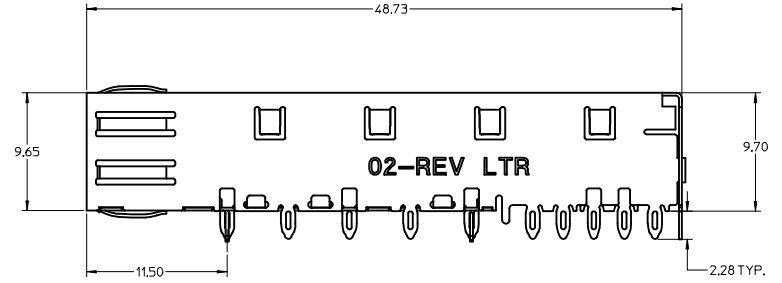
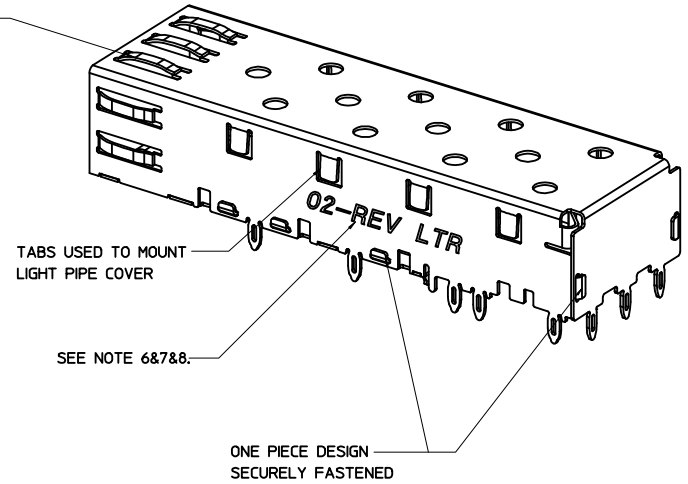
QUALITY SYMBOLS ▽ = 0 ▽ = 0 ▽ = 0 ▼ = 0 ▽ = 0 ☒ = 0 ■ = 0 ▽ = 0	THIS DRAWING CONTAINS INFORMATION THAT IS PROPRIETARY TO MOLEX ELECTRONIC TECHNOLOGIES, LLC AND SHOULD NOT BE USED WITHOUT WRITTEN PERMISSION									
	SEE REVISION TABLE		GENERAL TOLERANCES (UNLESS SPECIFIED)		DIMENSION UNITS		SCALE			
	EC NO: 169609		ANGULAR TOL ± 1.0 °		mm		4:1			
	DRWN: MKEMPEGOWDA		4 PLACES ±		DRWN BY		DATE		SFP ONE PIECE CAGE PRESS-FIT (0.090 LEGS)	
	CHKD: EWANG07		3 PLACES ±		MKEMPEGOWDA		2017/12/11			
	REV: APPR: RCHEN08		2 PLACES ± 0.13		CHKD BY		DATE		PRODUCT CUSTOMER DRAWING	
			1 PLACE ± 0.25		EWANG07		2017/12/15			
			0 PLACES ±		APPR BY		DATE		SERIES MATERIAL NUMBER CUSTOMER 74737 747370002	
			DRAFT WHERE APPLICABLE MUST REMAIN WITHIN DIMENSIONS		RCHEN08		2017/12/16			
					DRAWING SIZE		THIRD ANGLE PROJECTION		DOCUMENT NUMBER DOC TYPE DOC PART SHEET NUMBER 747370002 PSD ASY 3 OF 4	
				C						

REV	DATE	DESCRIPTION
A	2007/01/17	INITIAL RELEASE
B	2007/01/24	UPDATED VIEWS
C	2007/02/08	ADDED NOTE 5
D	2007/03/06	ADDED SHEETS 2 AND 3
E	2007/01/23	UPDATED 2D VIEWS TO REFLECT CHG'S MADE TO EM-74737-004 REV E.
F	2007/04/25	[1] ADDED REV SHEET; [2] UPDATED REV NOTES A-D; [3] UPDATED DRAWING TO REFLECT CHG'S MADE TO EM-74737-002-ASSY REV D; [4] ON SHT1 ROTATED BTM_VIEW 180 DEGREES.
G	2007/11/27	[1] UPDATED VIEWS TO MATCH EM-74737-002-ASSY REV E.
H	2014/12/02	1. ADDED "MM 3D MODEL: EM-74737-004-ASSY" ON LEFT TOP CORNER. [SHEET 1] 2. ADDED NOTE 6, 7, 8. [SHEET 1] 3. CHANGED NOTE5 TO "NO RoHS EXEMPTIONS". [SHEET 1] 4. REMOVED ALL INCH UNIT. [SHEET 1~3]
J	2017/12/14	REMASTERED FROM SD-74737-002 REV H TO 747370002 PSD ASY REV J SHEET 1: A12: CHANGED EG IN NOTE 8 FROM (E.G., 02-3J) TO (E.G., 02-4J)

QUALITY SYMBOLS		THIS DRAWING CONTAINS INFORMATION THAT IS PROPRIETARY TO MOLEX ELECTRONIC TECHNOLOGIES, LLC AND SHOULD NOT BE USED WITHOUT WRITTEN PERMISSION									
▽ = 0	▽ = 0	SEE REVISION TABLE EC NO: 169609 DRWN: MKEMPEGOWDA CHKD: EWANG07 REV / APPR: RCHEN08	GENERAL TOLERANCES (UNLESS SPECIFIED)			DIMENSION UNITS	SCALE	molex [®]			
▽ = 0	▽ = 0		ANGULAR TOL ± 1.0 °			mm	1:1				
▽ = 0	▽ = 0		4 PLACES ±	DRWN BY		DATE		SFP ONE PIECE CAGE PRESS-FIT (0.090 LEGS)			
▽ = 0	▽ = 0		3 PLACES ±	MKEMPEGOWDA		2017/12/11					
▽ = 0	▽ = 0		2 PLACES ± 0.13	CHKD BY		DATE		PRODUCT CUSTOMER DRAWING			
▽ = 0	▽ = 0		1 PLACE ± 0.25	EWANG07		2017/12/15					
▽ = 0	▽ = 0	0 PLACES ±	APPR BY		DATE		SERIES	MATERIAL NUMBER	CUSTOMER		
▽ = 0	▽ = 0	DRAFT WHERE APPLICABLE MUST REMAIN WITHIN DIMENSIONS	RCHEN08		2017/12/16		74737	747370002			
▽ = 0	▽ = 0		DRAWING SIZE	THIRD ANGLE PROJECTION		C		DOCUMENT NUMBER	DOC TYPE	DOC PART	SHEET NUMBER
								747370002	PSD	ASY	4 OF 4



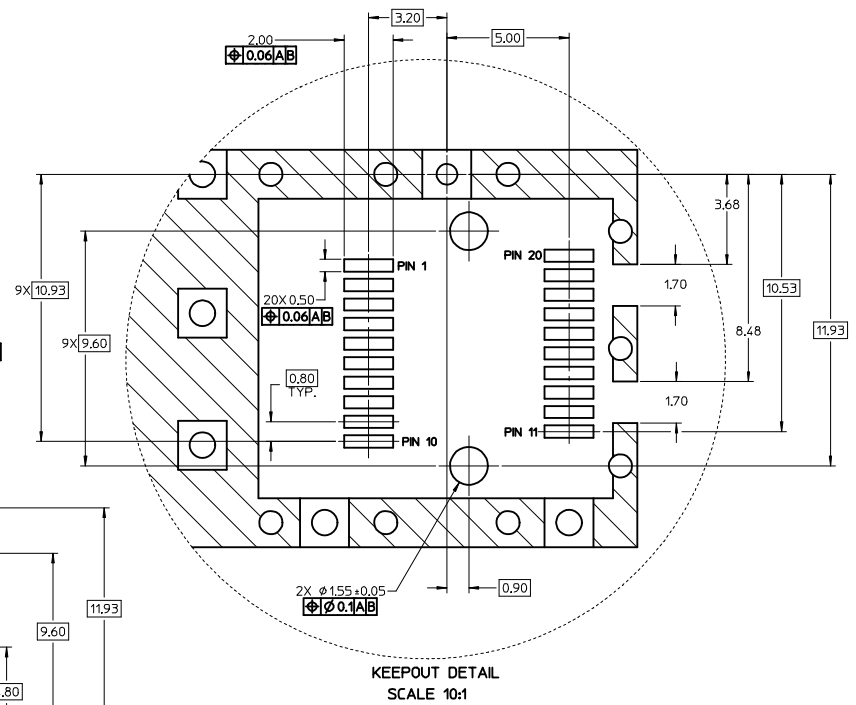
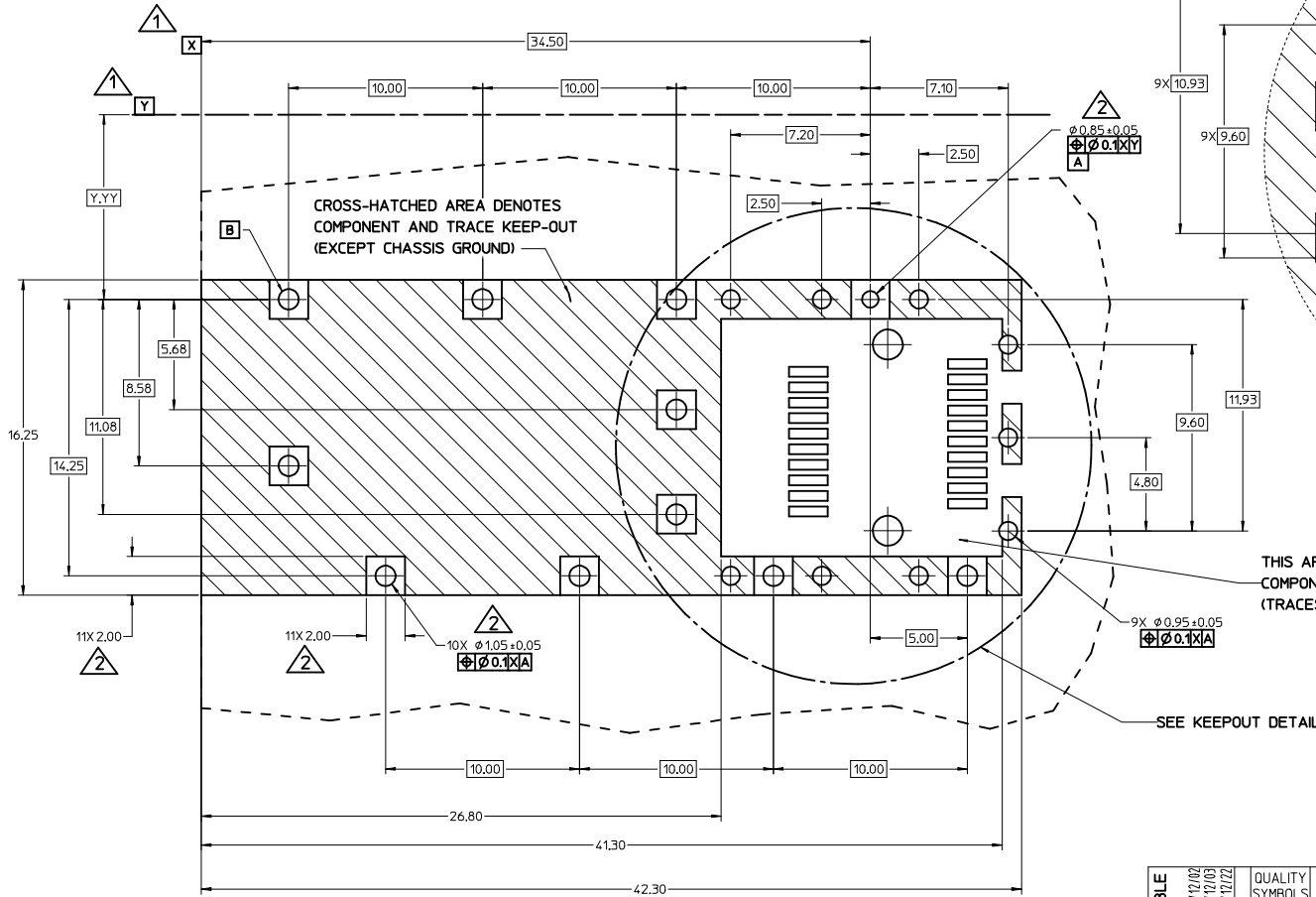
SPRING FINGER GASKET WITH TWO POINTS OF CONTACT. COMPLIES WITH (SFP) MSA BOARD AND BEZEL LOCATIONS.



- NOTES:
- PRESS FIT LEGS, 2.28mm LONG. 1.57mm MINIMUM PCB THICKNESS.
 - THIS CAGE IS FOR SINGLE SIDED USE ONLY.
 - CAN BE USED WITH THE FOLLOWING LIGHT PIPE PART NUMBERS:
747260001 - LIGHT PIPE FROM BACK TO TOP (REFER TO DOCUMENT SD-74726-001)
747260002 - LIGHT PIPE FROM SIDE TO TOP (REFER TO DOCUMENT SD-74726-002)
 - MATERIAL: COPPER ALLOY
PLATING: PRE-PLATED WITH NICKEL
 - NO RoHS EXEMPTIONS.
 - REVISION LETTER IS FOLLOWING MOLEX 3D MODEL.
 - INSERT TO CHANGE ENGRAVING FOR LAST TWO DIGITS OF PART NUMBER OR 3D REVISION.
 - INSERT TO IDENTIFY ADDITIONAL TOOLING STARTING WITH TOOL #2 AS FOLLOWS:
LAST TWO DIGITS OF PART NUMBER, TOOL NUMBER AND REVISION LETTER (E.G., 02-3J)

SEE REVISION TABLE IEC NO: CPG2015-2800 DRAWN BY: DRWN:LUZ0 CHECKED BY: CHYKSYANG16 APPROVED BY: APPR:RCHEN08 DATE: 2014/12/02 DATE: 2014/12/03 DATE: 2014/12/22	QUALITY SYMBOLS	GENERAL TOLERANCES (UNLESS SPECIFIED)	DIMENSION STYLE	SCALE	DESIGN UNITS	THIRD ANGLE PROJECTION	
	∇=0 ∇=0 ∇=0	mm INCH 4 PLACES ± --- ± --- 3 PLACES ± --- ± --- 2 PLACES ± 0.13 ± --- 1 PLACE ± 0.25 ± --- 0 PLACE ± ±	MM ONLY	5:1	METRIC	DRAWN BY: CCOX CHECKED BY: RMAHMOOD APPROVED BY: RMAHMOOD DATE: 2007/01/18 DATE: 2007/01/18 DATE: 2007/01/18	TITLE: SFP ONE PIECE CAGE PRESS-FIT (0.090 LEGS) MATERIAL NO: 747370002 DOCUMENT NO: SD-74737-002
	ANGULAR ± 1 ° DRAFT WHERE APPLICABLE MUST REMAIN WITHIN DIMENSIONS	SHEET NO. 1 OF 4	THIS DRAWING CONTAINS INFORMATION THAT IS PROPRIETARY TO MOLEX INCORPORATED AND SHOULD NOT BE USED WITHOUT WRITTEN PERMISSION				
	MOLEX						

- 1. DATUM AND BASIC DIMENSIONS ESTABLISHED BY CUSTOMER.
- 2. PADS AND VIAS ARE CHASSIS GROUND.
- 3. HOLE LAYOUT SHOWN IS FOR SINGLE SIDED MOUNTING ONLY.
- 4. CONNECTOR PAD LAYOUT PER SFP MSA, WILL ACCOMMODATE MOLEX CONNECTOR SERIES 74441 OR EQUIVALENT.



THIS AREA DENOTES COMPONENT KEEP-OUT (TRACES ALLOWED)

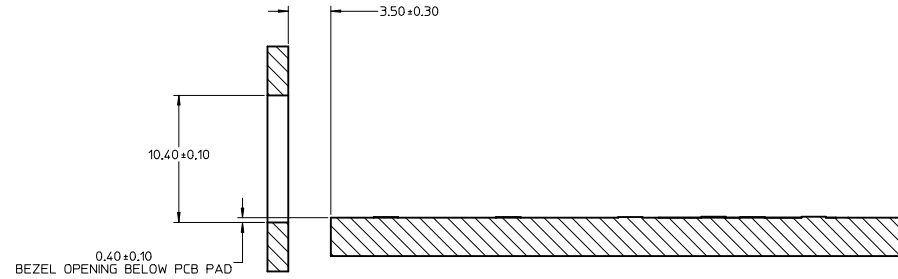
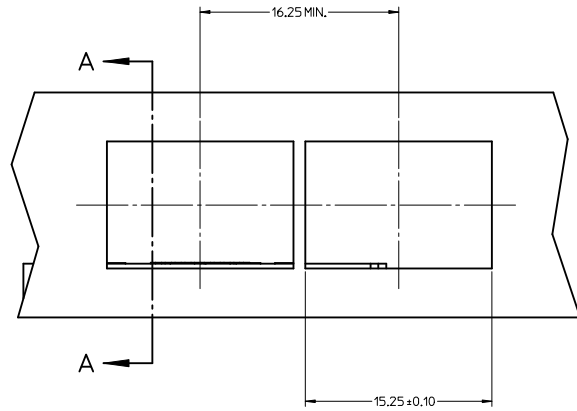
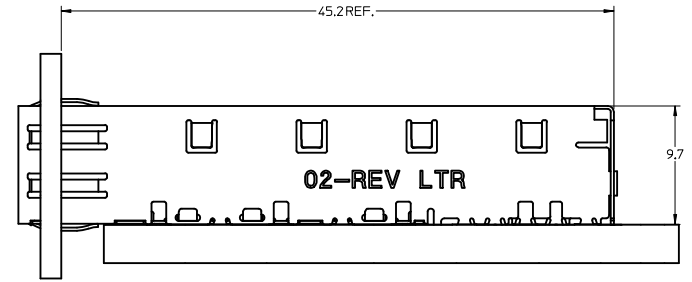
SEE KEEPOUT DETAIL

SEE REVISION TABLE IEC NO: CPG2015-2800 DRAWN BY: DRWNLU20 CHECKED BY: CHYKSYANG16 APPROVED BY: APPRRCHE08 DATE: 2014/12/02 DATE: 2014/12/03 DATE: 2014/12/22	QUALITY SYMBOLS	GENERAL TOLERANCES (UNLESS SPECIFIED)	DIMENSION STYLE	SCALE	DESIGN UNITS	THIRD ANGLE PROJECTION
	▽=0	mm	MM ONLY	8:1	METRIC	☉
	▽=0	INCH	4 PLACES ± ---	DRAWN BY: CCOX	DATE: 2007/01/18	TITLE: SFP ONE PIECE CAGE PRESS-FIT (0.090 LEGS)
	▽=0	ANGULAR ± 1 °	3 PLACES ± ---	CHECKED BY: RMAHMOOD	DATE: 2007/01/18	DATE: 2007/01/18
▽=0	DRAFT WHERE APPLICABLE MUST REMAIN WITHIN DIMENSIONS	2 PLACES ± 0.13	APPROVED BY: RMAHMOOD	DATE: 2007/01/18	MATERIAL NO: 747370002	DOCUMENT NO: SD-74737-002
▽=0		1 PLACE ± 0.25				
		0 PLACE ±				

molex

SHEET NO. 2 OF 4

20 19 18 17 16 15 14 13 12 11 10 9 8 7 6 5 4 3 2 1

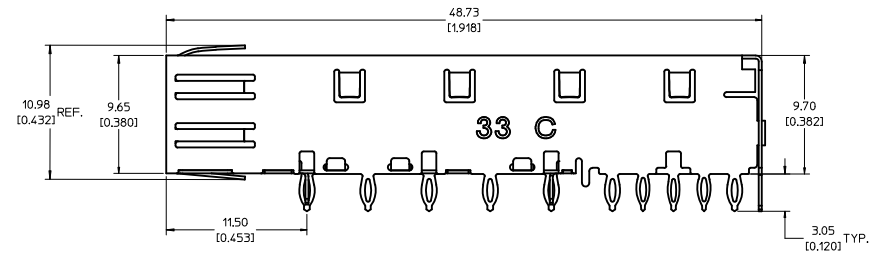
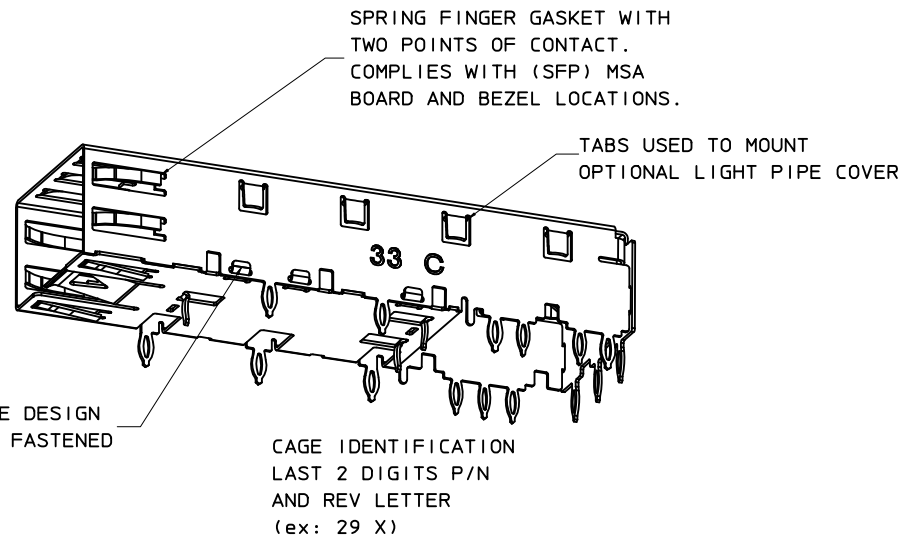
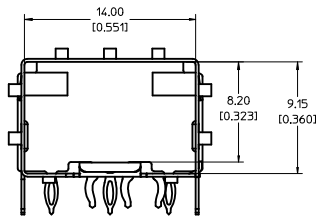
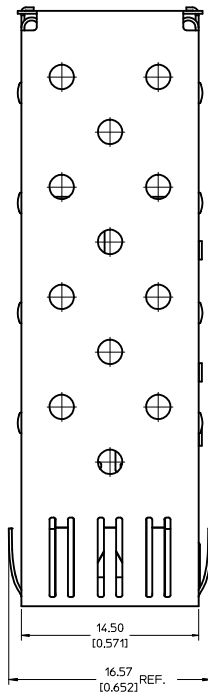
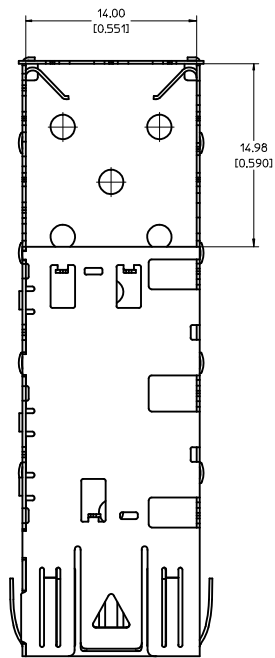


SECTION A-A

SEE REVISION TABLE EC NO: CPG2015-2800 DRW: LUL20 2014/12/02 CHK: SYANG16 2014/12/03 APPR: CHEN08 2014/12/22	QUALITY SYMBOLS	GENERAL TOLERANCES (UNLESS SPECIFIED)	DIMENSION STYLE	SCALE	DESIGN UNITS	THIRD ANGLE PROJECTION
	▽=0	mm INCH	MM ONLY	5:1	METRIC	
	▽=0	4 PLACES ± --- ± ---				
	▽=0	3 PLACES ± --- ± ---				
		ANGULAR ± 1 °	DRAWN BY	DATE	TITLE	
		DRAFT WHERE APPLICABLE MUST REMAIN WITHIN DIMENSIONS	CCOX	2007/01/18	SFP ONE PIECE CAGE PRESS-FIT (0.090 LEGS)	
			CHECKED BY	DATE		
			RAHMOOD	2007/01/18		
			APPROVED BY	DATE		
			RAHMOOD	2007/01/18		
			MATERIAL NO.	DOCUMENT NO.		
			747370002	SD-74737-002		
			SIZE	THIS DRAWING CONTAINS INFORMATION THAT IS PROPRIETARY TO MOLEX INCORPORATED AND SHOULD NOT BE USED WITHOUT WRITTEN PERMISSION		
			D			

DATE	REV	REVISION TABLE
2007/01/17	A	INITIAL RELEASE
2007/01/24	B	UPDATED VIEWS
2007/02/08	C	ADDED NOTE 5
2007/03/06	D	ADDED SHEETS 2 AND 3
2007/01/23	E	UPDATED 2D VIEWS TO REFLECT CHG'S MADE TO EM-74737-002 REV E.
2007/04/25	F	[1] ADDED REV SHEET, [2] UPDATED REV NOTES A-D, [3] UPDATED DRAWING TO REFLECT CHG'S MADE TO EM-74737-002-ASSY REV D, [4] ON SHT1 ROTATED BTM_VIEW 180 DEGREES.
2007/11/27	G	[1] UPDATED VIEWS TO MATCH EM-74737-002-ASSY REV E.
2014/12/02	H	1. ADDED *MM 3D MODEL: EM-74737-002-ASSY* ON LEFT TOP CORNER. [SHEET 1] 2. ADDED NOTE 6, 7, 8. [SHEET 1] 3. CHANGED NOTE5 TO *NO RoHS EXEMPTIONS*. [SHEET 1] 4. REMOVED ALL INCH UNIT. [SHEET 1~3]

SEE REVISION TABLE IEC NO: CPG2015-2800 DRAWN BY: DRWNLJL20 2014/12/02 CHECKED BY: CHYKSYANG16 2014/12/03 APPROVED BY: APPRRCHE08 2014/12/22 REV:	QUALITY SYMBOLS	GENERAL TOLERANCES (UNLESS SPECIFIED)	DIMENSION STYLE	SCALE	DESIGN UNITS	THIRD ANGLE PROJECTION	
	▽=0	4 PLACES ± mm INCH	MM ONLY	1:1	METRIC	☉	
	▽=0	3 PLACES ± 0.13					
	▽=0	2 PLACES ± 0.25					
	ANGULAR ± 1 °	DRAFT WHERE APPLICABLE MUST REMAIN WITHIN DIMENSIONS	MATERIAL NO.	DATE	DATE	TITLE	
			747370002	2007/01/18	2007/01/18	SFP ONE PIECE CAGE PRESS-FIT (0.090 LEGS)	
			SIZE D	DOCUMENT NO.		SHEET NO.	
			SD-74737-002		4 OF 4		
			THIS DRAWING CONTAINS INFORMATION THAT IS PROPRIETARY TO MOLEX INCORPORATED AND SHOULD NOT BE USED WITHOUT WRITTEN PERMISSION				



- NOTES:**
- PRESS FIT LEGS, 0.120 INCHES LONG.
1.57 [0.062] MINIMUM PCB THICKNESS.
 - THIS CAGE IS FOR SINGLE SIDED USE ONLY.
 - CAN BE USED WITH THE FOLLOWING LIGHT PIPE PART NUMBERS:
747260001 - LIGHT PIPE FROM BACK TO TOP
(REFER TO DOCUMENT SD-74726-001)
747260002 - LIGHT PIPE FROM SIDE TO TOP
(REFER TO DOCUMENT SD-74726-002)
 - MATERIAL: COPPER ALLOY
PLATING: PRE-PLATED WITH NICKEL
 - THIS PART MEETS THE RESTRICTION OF HAZARDOUS SUBSTANCES IN ELECTRICAL AND ELECTRONIC EQUIPMENT (ROHS) DIRECTIVE (2002/95/EC).

REV DIMS-CAGE REV EC NO: USY2010-0515 DRAWN BY: CHYOKI JANOTA APPROV: K JANOTA 2010/04/27 2010/05/04	QUALITY SYMBOLS ▽=0 ▽=0	GENERAL TOLERANCES (UNLESS SPECIFIED): <table border="1"> <tr> <th></th> <th>mm</th> <th>INCH</th> </tr> <tr> <td>4 PLACES</td> <td>±0.05</td> <td>±0.002</td> </tr> <tr> <td>3 PLACES</td> <td>±0.025</td> <td>±0.001</td> </tr> <tr> <td>2 PLACES</td> <td>±0.13</td> <td>±0.01</td> </tr> <tr> <td>1 PLACE</td> <td>±0.25</td> <td>±0.01</td> </tr> </table>			mm	INCH	4 PLACES	±0.05	±0.002	3 PLACES	±0.025	±0.001	2 PLACES	±0.13	±0.01	1 PLACE	±0.25	±0.01	DIMENSION STYLE MM/IN	SCALE 5:1	DESIGN UNITS METRIC	THIRD ANGLE PROJECTION
			mm	INCH																		
4 PLACES	±0.05	±0.002																				
3 PLACES	±0.025	±0.001																				
2 PLACES	±0.13	±0.01																				
1 PLACE	±0.25	±0.01																				
DRAFT WHERE APPLICABLE MUST REMAIN WITHIN DIMENSIONS		MATERIAL NO. 747370033	DATE 2009/09/28	DATE 2009/09/28	DATE 2009/09/28	DATE 2009/09/28																

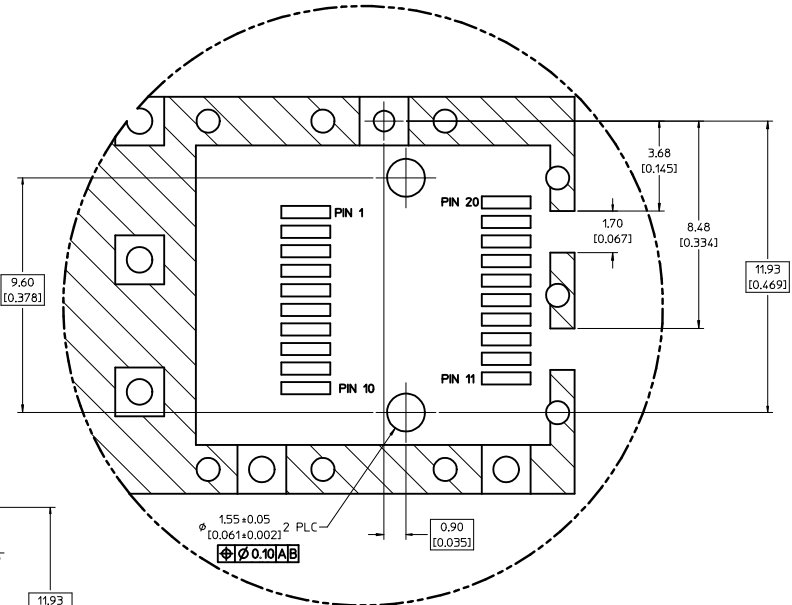
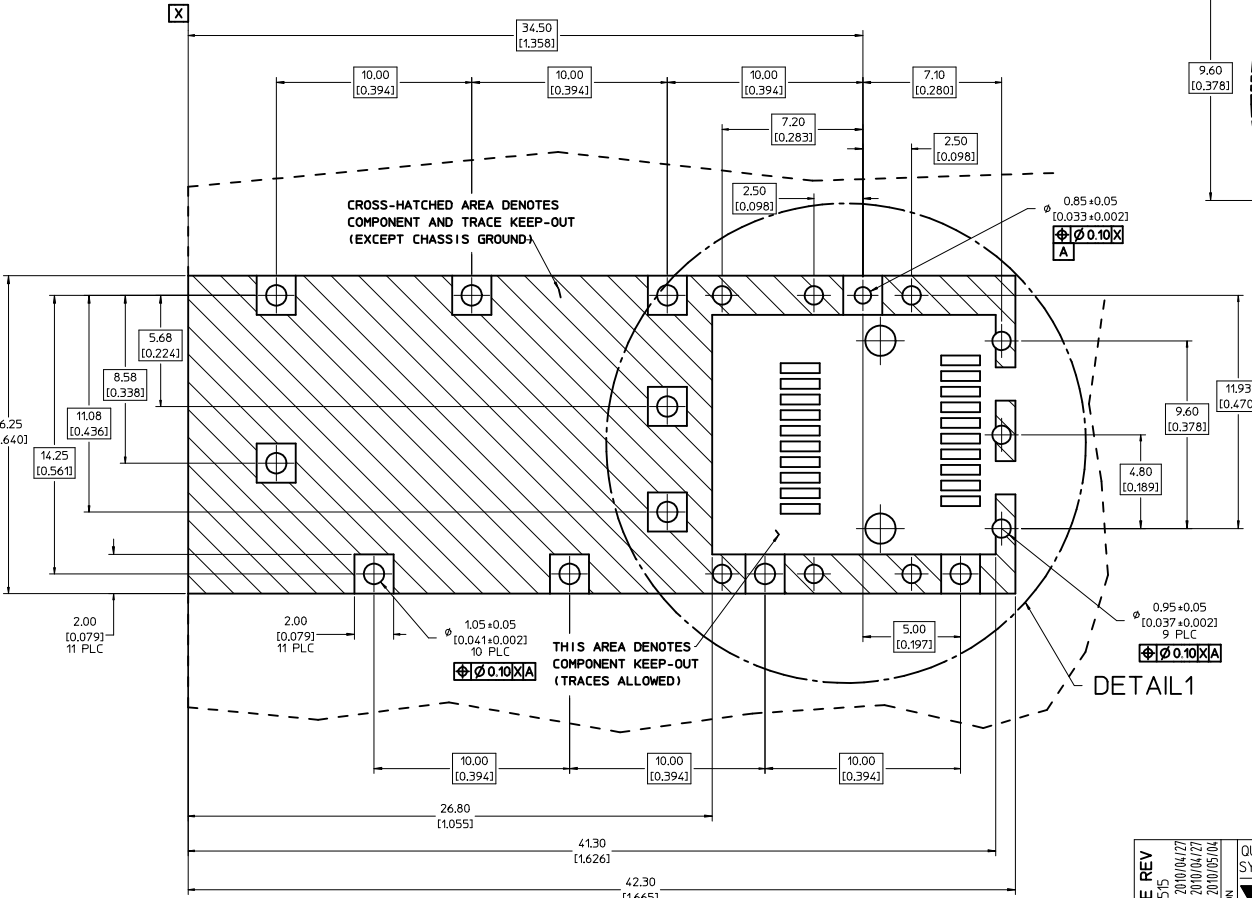
TITLE: SFP ONE PIECE CAGE PRESS-FIT (0.120 LEGS) W/ MODIFIED LATCH TANG

MOLEX INCORPORATED

DOCUMENT NO. SD-74737-0033

SHEET NO. 1 OF 3

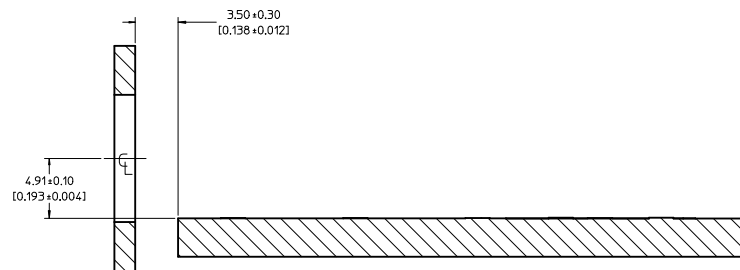
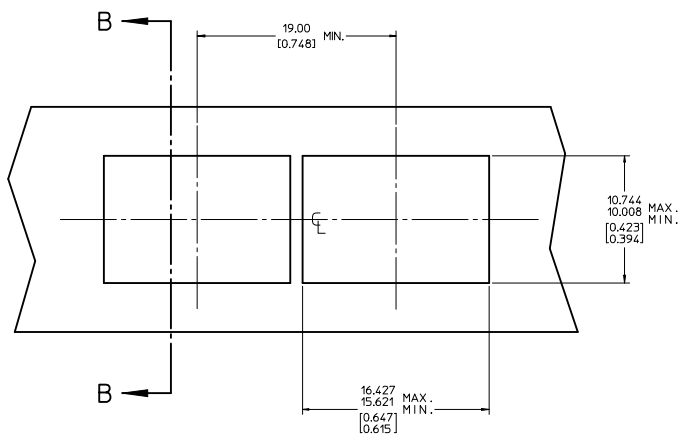
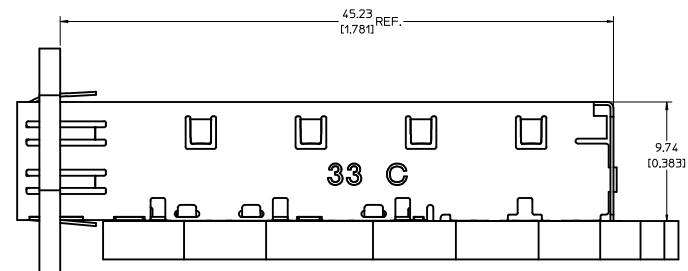
1. PADS AND VIAS ARE CHASSIS GROUND.
2. HOLE LAYOUT SHOWN IS FOR SINGLE SIDED MOUNTING ONLY.
3. CONNECTOR PAD LAYOUT PER SFP MSA, WILL ACCOMMODATE MOLEX CONNECTOR SERIES 74441 OR EQUIVALENT.



DETAIL 1
SCALE 10:1

REV DIMS-CAGE REV IEC NO: USY2010-0515 DRAWN/SECRET 2010/04/27 CHKD/K JANITA 2010/04/27 APPR/K JANITA 2010/05/04	QUALITY SYMBOLS	GENERAL TOLERANCES (UNLESS SPECIFIED)	DIMENSION STYLE	SCALE	DESIGN UNITS	THIRD ANGLE PROJECTION
	▽=0 ▽=0	mm INCH 4 PLACES ± --- ± --- 3 PLACES ± --- ± 0.005 2 PLACES ± 0.13 ± 0.01 1 PLACE ± 0.25 ± --- ANGULAR ± 1 °	MM/IN	8:1	METRIC	DRAWN BY DATE JRESENDE 2009/09/28 CHECKED BY DATE JRESENDE 2009/09/28 APPROVED BY DATE JRESENDE 2009/09/28
	DRAFT WHERE APPLICABLE MUST REMAIN WITHIN DIMENSIONS	MATERIAL NO.	DOCUMENT NO.	TITLE SFP ONE PIECE CAGE PRESS-FIT (0.120 LEGS) W/ MODIFIED LATCH TANG MOLEX INCORPORATED		
	SIZE D	747370033	SD-74737-0033	SHEET NO. 2 OF 3		

20 19 18 17 16 15 14 13 12 11 10 9 8 7 6 5 4 3 2 1



SECTION B-B

REV DIMS-CAGE REV IEC NO: USY2010-0515 DRAWN/SECRET 2010/04/27 CHK/DK/LAN/TA 2010/04/27 APPR/K/LAN/TA 2010/05/04 DESCRIPTION	QUALITY SYMBOLS	GENERAL TOLERANCES (UNLESS SPECIFIED)	DIMENSION STYLE	SCALE	DESIGN UNITS	THIRD ANGLE PROJECTION															
	▽=0 ▽=0	<table border="1"> <thead> <tr> <th></th> <th>mm</th> <th>INCH</th> </tr> </thead> <tbody> <tr> <td>4 PLACES</td> <td>±---</td> <td>±---</td> </tr> <tr> <td>3 PLACES</td> <td>±---</td> <td>±0.005</td> </tr> <tr> <td>2 PLACES</td> <td>±0.13</td> <td>±0.01</td> </tr> <tr> <td>1 PLACE</td> <td>±0.25</td> <td>±---</td> </tr> </tbody> </table> ANGULAR ± 1°		mm	INCH	4 PLACES	±---	±---	3 PLACES	±---	±0.005	2 PLACES	±0.13	±0.01	1 PLACE	±0.25	±---	MM/IN	5:1	METRIC	
		mm	INCH																		
	4 PLACES	±---	±---																		
3 PLACES	±---	±0.005																			
2 PLACES	±0.13	±0.01																			
1 PLACE	±0.25	±---																			
DRAWN BY: JRESENDE CHECKED BY: JRESENDE APPROVED BY: JRESENDE	DATE: 2009/09/28 DATE: 2009/09/28 DATE: 2009/09/28	MATERIAL NO: 747370033	TITLE: SFP ONE PIECE CAGE PRESS-FIT (0.120 LEGS) W/ MODIFIED LATCH TANG	DOCUMENT NO: SD-74737-0033	SHEET NO: 3 OF 3	MOLEX INCORPORATED															
DRAFT WHERE APPLICABLE MUST REMAIN WITHIN DIMENSIONS THIS DRAWING CONTAINS INFORMATION THAT IS PROPRIETARY TO MOLEX INCORPORATED AND SHOULD NOT BE USED WITHOUT WRITTEN PERMISSION																					

19 18 17 16 15 14 13 12 11 10 9 8 7 6 5 4 3 2 1