

ITEM	PART#	DESCRIPTION	QTY	UOM
A,B	510210600	PicoBlade1.25 Rec Hsg 6P	2	PC
C	500588000	PicoBlade1.25 Crimp Rec Term Chain	12	PC
D	887804719	Blank label 12.7x35.5mm (WHT:12.7mm) HF	1	PC

FROM	TO	DESCRIPTION	COLOR
A1	B6	CABLE 28 AWG UL 1061 BLACK	BLACK
A2	B5	CABLE 28 AWG UL 1061 BLACK	BLACK
A3	B4	CABLE 28 AWG UL 1061 BLACK	BLACK
A4	B3	CABLE 28 AWG UL 1061 BLACK	BLACK
A5	B2	CABLE 28 AWG UL 1061 BLACK	BLACK
A6	B1	CABLE 28 AWG UL 1061 BLACK	BLACK

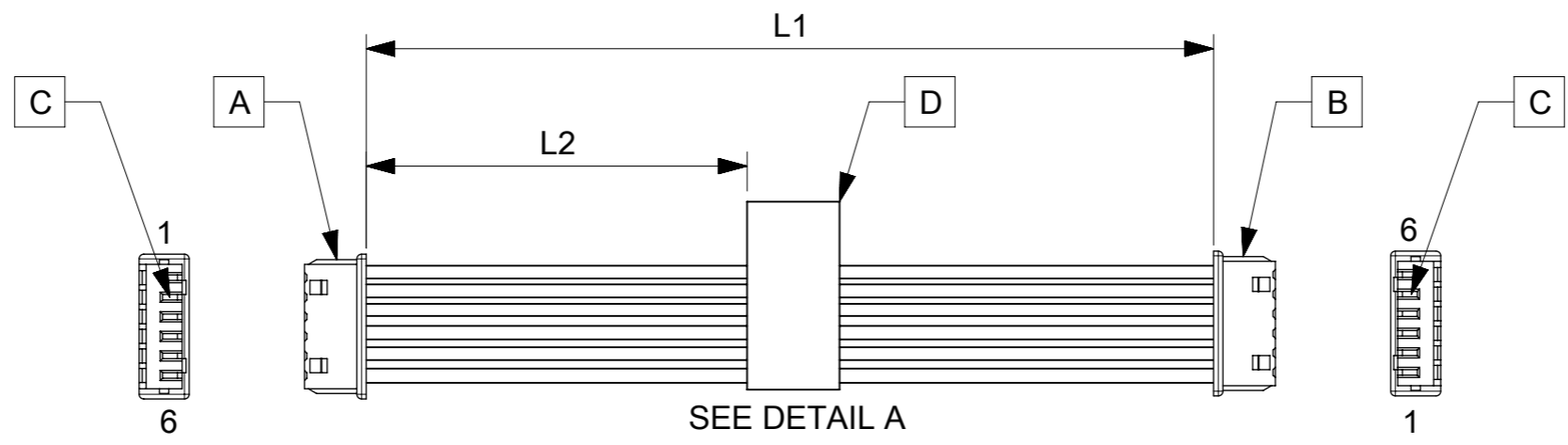
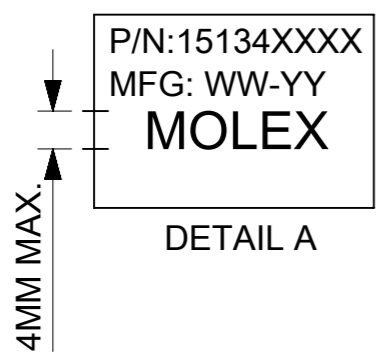


TABLE			
PART NUMBER	L1	L2	TITLE
151340600	50±6	20±5	Picoblade 6 Circuit 50MM
151340601	100±6	45±5	Picoblade 6 Circuit 100MM
151340602	150±8	70±5	Picoblade 6 Circuit 150MM
151340603	300±10	145±10	Picoblade 6 Circuit 300MM
151340605	450±10	220±10	Picoblade 6 Circuit 450MM
151340606	600±10	295±10	Picoblade 6 Circuit 600MM

- NOTES:
1. Cable assembly to be tested 100% for continuity and polarity.
 2. Label text must be 2mm max. In height with Arial font.
 3. Connector view shown is from mating side.
 4. Label must be wrapped in Flag type.
 5. Stick UL label on the outside carton.

REVISION			
DATE	REV	DESCRIPTION	CHANGER
26/07/2016	A	INITIAL RELEASE	DICK
26/04/2019	B	PROJECT TRANSFER FROM DG TO INDIA	ARAJU
24/06/2019	B1	LABEL CHANGE	ARAJU



QUALITY SYMBOLS 	THIS DRAWING CONTAINS INFORMATION THAT IS PROPRIETARY TO MOLEX ELECTRONIC TECHNOLOGIES, LLC AND SHOULD NOT BE USED WITHOUT WRITTEN PERMISSION		DIMENSION UNITS mm	SCALE NTS		
	EC NO: 619691 DRWN: ARAJU CHK'D: RDESAI01 APPR: RDESAI01	GENERAL TOLERANCES (UNLESS SPECIFIED) ANGULAR TOL ± °	DRWN BY WLXIE	DATE 2016/07/12		SEE TABLE
	4 PLACES ± 3 PLACES ± 2 PLACES ± 1 PLACE ± 0 PLACES ±	DRAFT WHERE APPLICABLE MUST REMAIN WITHIN DIMENSIONS	CHK'D BY DHUANG16	DATE 2016/07/25		
	B1	DRAFTING SIZE A3	APPR BY YXZOU	DATE 2016/07/28		PRODUCT CUSTOMER DRAWING
SERIES 201234		MATERIAL NUMBER SEE TABLE		CUSTOMER GENERAL MARKET		
DOCUMENT NUMBER 2012341358			DOC TYPE PSD	DOC PART 000	SHEET NUMBER 1 OF 1	