



161 Alden Road, Units 7 & 8, Markham, Ontario Canada L3R 3W7

Tel: +1 416 754-3322

Fax: +1 416-754-3299

Email: info@edac.net

http://www.edac.net

ENGINEERING CHANGE NOTICE

Originator: Yu Zhang
 Phone No. (416) 754-3322 ext.234
 Email Address: yzhang@edac.net
 Department ENGINEERING

Date:	Document Number
May 1, 2018	ECN20180501-00
Revision Number	SHEET
1	1 of 3

CHANGE TYPE

- CLASS I Customer notification and approval required prior to implementation
- CLASS II Customer notification only, no approval required
- CLASS III No customer notification required

REASON OF CHANGE

Discontinuance / End of Life of 690-024-294-031.

DESCRIPTION OF CHANGE:

1. Part No. 690-024-294-031 (Obsolete) Replaced by Part No. 690-024-294T331

2. Effective implementation to distribution is on **May 2nd, 2018**

PARTIES AFFECTED

- Customer
- Distributors
- Suppliers

- NORCOMP
- MH
- ETW

- ECA
- EDG
- EDAC UK

KEY TARGET DUE DATES IF CHANGE IS APPROVED TO PROCEED (check if applicable and show target dates as known)

- Submit Quote _____
- Prod. Trial Run _____
- Run at Rate _____
- PPAP from Supplier _____
- MRD of Production Parts _____

ACKNOWLEDGEMENT FOR ECN INITIATION: (OPTIONALS)

<input type="checkbox"/> Tooling Rep _____	<input type="checkbox"/> Process Eng Rep _____
<input type="checkbox"/> Mfg Eng Rep _____	<input type="checkbox"/> Facilities Rep _____
<input type="checkbox"/> Production Rep _____	<input type="checkbox"/> Sales Rep _____
<input type="checkbox"/> Materials Rep _____	<input type="checkbox"/> Product Eng. Rep. _____
<input type="checkbox"/> Quality Rep _____	<input type="checkbox"/> Purchasing Rep _____

STATUS	
APPROVED	<input type="checkbox"/>
CCS CHANGE REQUEST #	
REJECTED	<input type="checkbox"/>
Change REJECTED by:	
Rejected Date:	

APPROVALS FOR ECN INITIATION (REQUIRED)

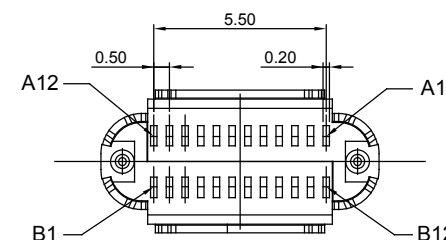
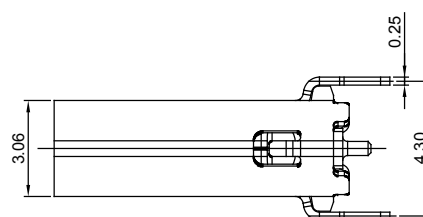
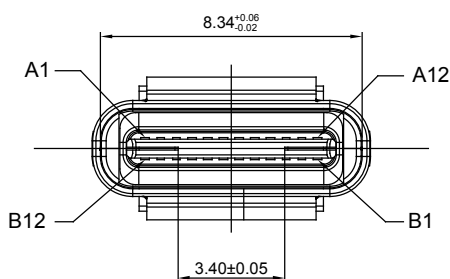
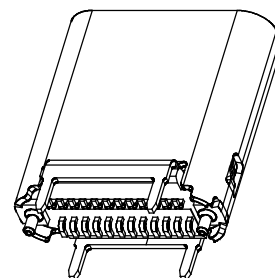
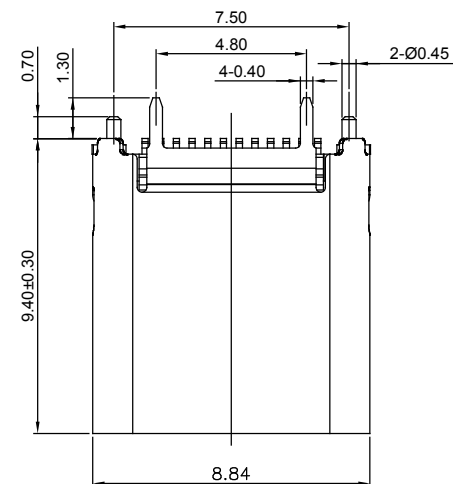
<input type="checkbox"/> President _____	<input checked="" type="checkbox"/> Engineering Manager <u>Ronnie Sta. Monica</u>
<input type="checkbox"/> Vice President <u>Bob Sakitkovski</u>	<input checked="" type="checkbox"/> Mechanical Engineer <u>Yu Zhang</u>

MINIMUM OF TWO SIGNATURES REQUIRED

THIS IS A C.A.D. GENERATED DRAWING
DO NOT MAKE MANUAL REVISIONS TO MASTER.



TOLERANCE UNLESS OTHERWISE SPECIFIED	
X.	±0.50
X.X	±0.30
X.XX	±0.20
X.XXX	±0.10



NOTES:

INSULATOR:
CONTACT:

SHELL:

CONTACT RESISTANCE:

CONTACT CURRENT RATING:

DIELECTRIC WITHSTANDING VOLTAGE:

INSULATION RESISTANCE:

OPERATING TEMPERATURE:

MATING FORCE:

UNMATED FORCE:

HIGH TEMPERATURE PLASTIC, UL 94 V-0, BLACK COLOR
COPPER ALLOY, T=0.15mm
GOLD FLASH PLATING ALL OVER 50u" Min NICKEL
80u" Min Matte Tin ALL OVER 50u" Min NICKEL ON SOLDER AREA
STAINLESS STEEL, T=0.20mm
50u" Min. NICKEL ALL OVER

40mΩ Max FOR INITIAL. 10mΩ CHANGE AFTER TEST.
MEASURE AT 20mV, 100mA.

5A FOR VBUS PIN; 1.25A FOR VCONN PIN.

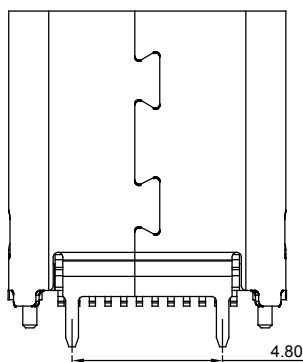
100V AC R.M.S.

100MΩ Min

-40°C ~ 85°C

5~20 N.

6~20N AFTER TEST.



USB 3.1, TYPE C, FEMALE, VERTICAL, SMT

ACAD REFERENCE NO.: 690-024-294T331

DRAWN: Y.Z

DATE: MAY.01/2018

CHECKED:

DATE:

SCALE: (IN C.A.D. 1:1)

SHEET 1 OF 2

DRAWING NUMBER: 690-024-294T331

ISSUE

PART NUMBER: 690-024-294T331

1



THIS SERIES FULLY CONFORMS TO
THE EUROPEAN UNION DIRECTIVES
2011/65/EU FOR RoHS COMPLIANCY.



YOUR CONNECTION TO QUALITY & SERVICE

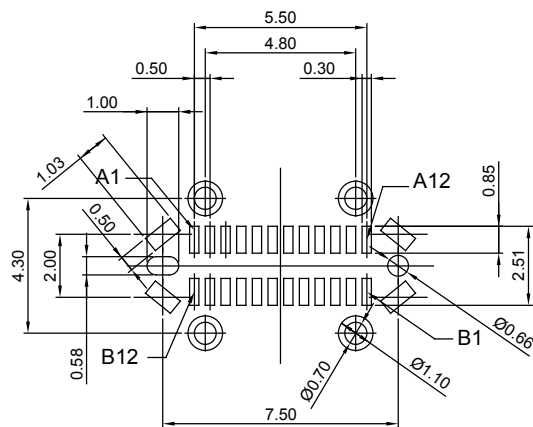
EDAC INC
TORONTO, ONTARIO
CANADA

THESE DRAWINGS AND SPECIFICATIONS
ARE THE PROPERTY OF EDAC INC., AND
SHALL NOT BE REPRODUCED, OR COPIED
OR USED AS THE BASIS FOR THE
MANUFACTURE OR SALE OF APPARATUS
WITHOUT WRITTEN PERMISSION.

THIS IS A C.A.D. GENERATED DRAWING
DO NOT MAKE MANUAL REVISIONS TO MASTER.



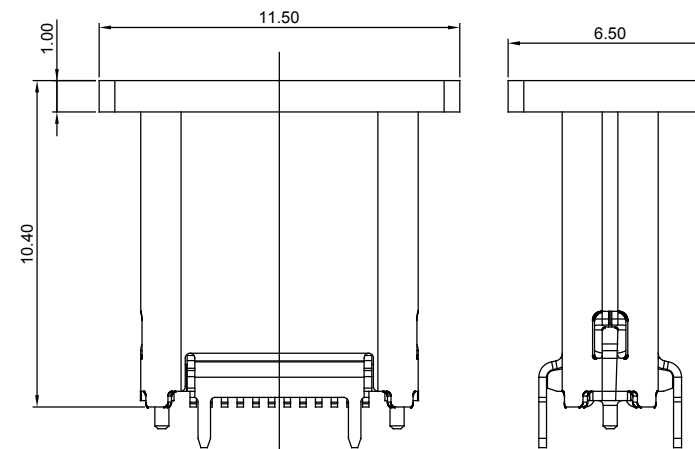
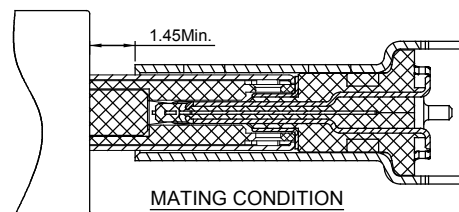
TOLERANCE UNLESS OTHERWISE SPECIFIED	
X.	±0.50
X.X	±0.30
X.XX	±0.20
X.XXX	±0.10



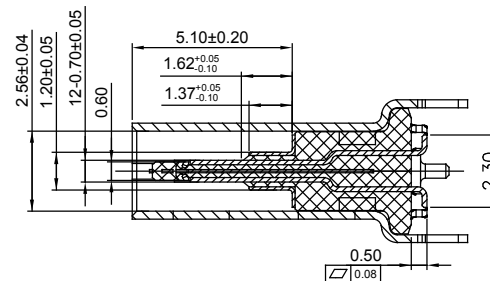
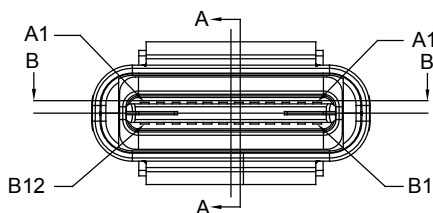
RECOMMEND P.C.B LAYOUT (COMPONENT SIDE)

TOLERANCE FOR PCB LAYOUT IS ± 0.05

KEEP OUT AREA

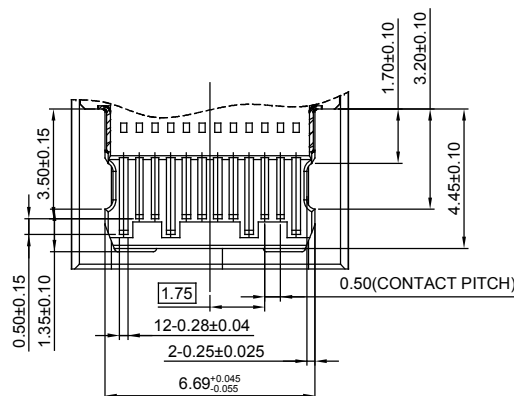


INCLUDE THE DIAGRAMS OF CAP



SECTION A-A

PIN	SIGNAL NAME	MATING SEQUENCE	PIN	SIGNAL NAME	MATING SEQUENCE
A1	GND	FIRST	B12	GND	FIRST
A2	SSTXp1	SECOND	B11	SSRXp1	SECOND
A3	SSTXn1	SECOND	B10	SSRXn1	SECOND
A4	V _{BUS}	FIRST	B9	V _{BUS}	FIRST
A5	CC1	SECOND	B8	SBU2	SECOND
A6	Dp1	SECOND	B7	Dn2	SECOND
A7	Dn1	SECOND	B6	Dp2	SECOND
A8	SBU1	SECOND	B5	CC2	SECOND
A9	V _{BUS}	FIRST	B4	V _{BUS}	FIRST
A10	SSRXn2	SECOND	B3	SSTXn2	SECOND
A11	SSRXp2	SECOND	B2	SSTXp2	SECOND
A12	GND	FIRST	B1	GND	FIRST
SHELL		GND	SHELL		GND



SECTION B-B

USB 3.1, TYPE C, FEMALE, VERTICAL, SMT

ACAD REFERENCE NO.: 690-024-294T331

DRAWN: Y.Z DATE: MAY.01/2018

CHECKED: DATE:

SCALE: (IN C.A.D. 1:1) SHEET 2 OF 2

DRAWING NUMBER: 690-024-294T331

ISSUE

PART NUMBER: 690-024-294T331

1



THIS SERIES FULLY CONFORMS TO THE EUROPEAN UNION DIRECTIVES 2011/65/EU FOR RoHS COMPLIANCE.



YOUR CONNECTION TO QUALITY & SERVICE

EDAC INC
TORONTO, ONTARIO
CANADA

THESE DRAWINGS AND SPECIFICATIONS ARE THE PROPERTY OF EDAC INC., AND SHALL NOT BE REPRODUCED, OR COPIED OR USED AS THE BASIS FOR THE MANUFACTURE OR SALE OF APPARATUS WITHOUT WRITTEN PERMISSION.