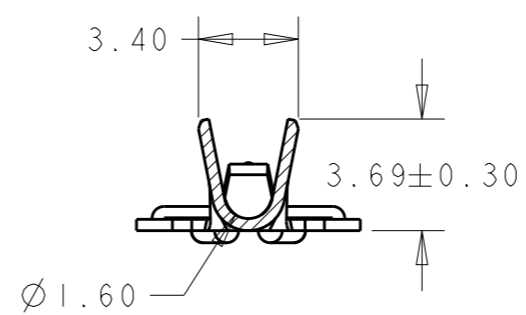
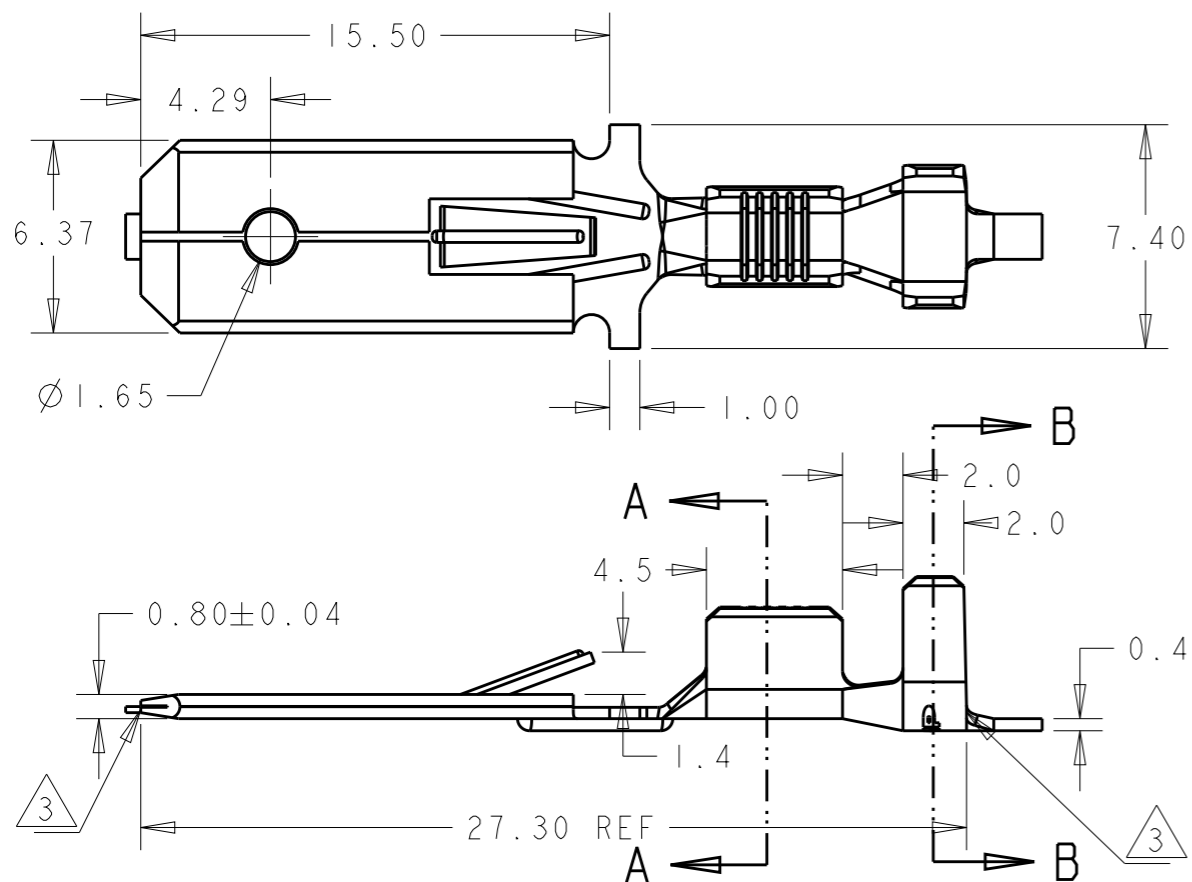
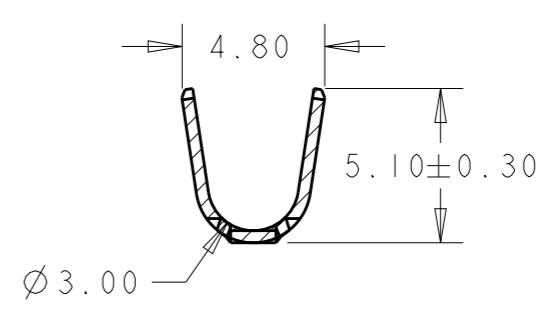


THIS DRAWING IS UNPUBLISHED. RELEASED FOR PUBLICATION 20  
 © COPYRIGHT 20 BY - ALL RIGHTS RESERVED.

| REVISIONS |     |                           |           |     |      |
|-----------|-----|---------------------------|-----------|-----|------|
| P         | LTR | DESCRIPTION               | DATE      | DWN | APVD |
|           | A   | INITIAL RELEASE           | 18MAY2018 | JH  | PKS  |
|           | AI  | REVISED PER ECR-19-015041 | 04NOV2019 | PC  | MB   |
|           |     |                           |           |     |      |
|           |     |                           |           |     |      |




SECTION A - A



SECTION B - B

- NOTES: .
1. WIRE BARREL CRIMP, "F Crimp":  
 CRIMP WIDTH 2.54mm (.100 )  
 CRIMP HEIGHT (±0.05mm)=(TOTAL CMA+8000)\*25.4/171100
  2. INSULATION BARREL CRIMP: 4.06mm (.160 ) "OVERLAP"
  - 3 0.5 MAX CUT OFF TABS
  4. WIRE RANGE: MAGNET WIRE CMA 1500-5200  
 WIRE DIAMETER CANNOT BE LESS THAN 26AWG[0.40mm]  
 FOR SINGLE WIRE, THE BARE WIRE DIAMETER IS FROM 0.90mm TO 1.60mm.
  5. INSULATION RANGE: Ø2.2 - Ø3.3mm
  6. NO VISIBLE OIL RESIDUE
  7. REELED WITH INTERLEAVE PAPER

2309591-1 | PN

|   |      |                                    |   |       |      |       |      |       |      |       |      |        |   |                          |   |  |
|---|------|------------------------------------|---|-------|------|-------|------|-------|------|-------|------|--------|---|--------------------------|---|--|
| THIS DRAWING IS A CONTROLLED DOCUMENT.  |      | DWN<br>JUSTIN HUANG<br>15SEP2016   |  TE Connectivity |       |      |       |      |       |      |       |      |        |   |                          |   |  |
| DIMENSIONS:<br>mm   |      | CHK<br>TIM DING<br>15SEP2016       |   |       |      |       |      |       |      |       |      |        |   |                          |   |  |
| TOLERANCES UNLESS OTHERWISE SPECIFIED:  |      | APVD<br>SENTHIL KUMAR<br>15SEP2016 | NAME<br>.250 SERIES FASTIN FASTON<br>TAB - AMPLIVAR   |       |      |       |      |       |      |       |      |        |   |                          |   |  |
| <table border="1"> <tr><td>0 PLC</td><td>±0.5</td></tr> <tr><td>1 PLC</td><td>±0.5</td></tr> <tr><td>2 PLC</td><td>±0.5</td></tr> <tr><td>3 PLC</td><td>±0.5</td></tr> <tr><td>4 PLC</td><td>±0.5</td></tr> <tr><td>ANGLES</td><td>±</td></tr> </table> |      | 0 PLC                              | ±0.5  | 1 PLC | ±0.5 | 2 PLC | ±0.5 | 3 PLC | ±0.5 | 4 PLC | ±0.5 | ANGLES | ± | PRODUCT SPEC<br>108-2086 | SIZE   CAGE CODE   DRAWING NO   RESTRICTED TO |  |
| 0 PLC   | ±0.5 |                                    |   |       |      |       |      |       |      |       |      |        |   |                          |   |  |
| 1 PLC   | ±0.5 |                                    |   |       |      |       |      |       |      |       |      |        |   |                          |   |  |
| 2 PLC   | ±0.5 |                                    |   |       |      |       |      |       |      |       |      |        |   |                          |   |  |
| 3 PLC   | ±0.5 |                                    |   |       |      |       |      |       |      |       |      |        |   |                          |   |  |
| 4 PLC   | ±0.5 |                                    |   |       |      |       |      |       |      |       |      |        |   |                          |   |  |
| ANGLES  | ±    |                                    |   |       |      |       |      |       |      |       |      |        |   |                          |   |  |
| MATERIAL<br>BRASS   |      | APPLICATION SPEC<br>114-18022      | A300779   C=2309591   |       |      |       |      |       |      |       |      |        |   |                          |   |  |
| FINISH<br>UNPLATED  |      | WEIGHT<br>-                        | SCALE 4:1   SHEET 1 OF 1   REV AI   |       |      |       |      |       |      |       |      |        |   |                          |   |  |
| -   |      | CUSTOMER DRAWING                   |   |       |      |       |      |       |      |       |      |        |   |                          |   |  |