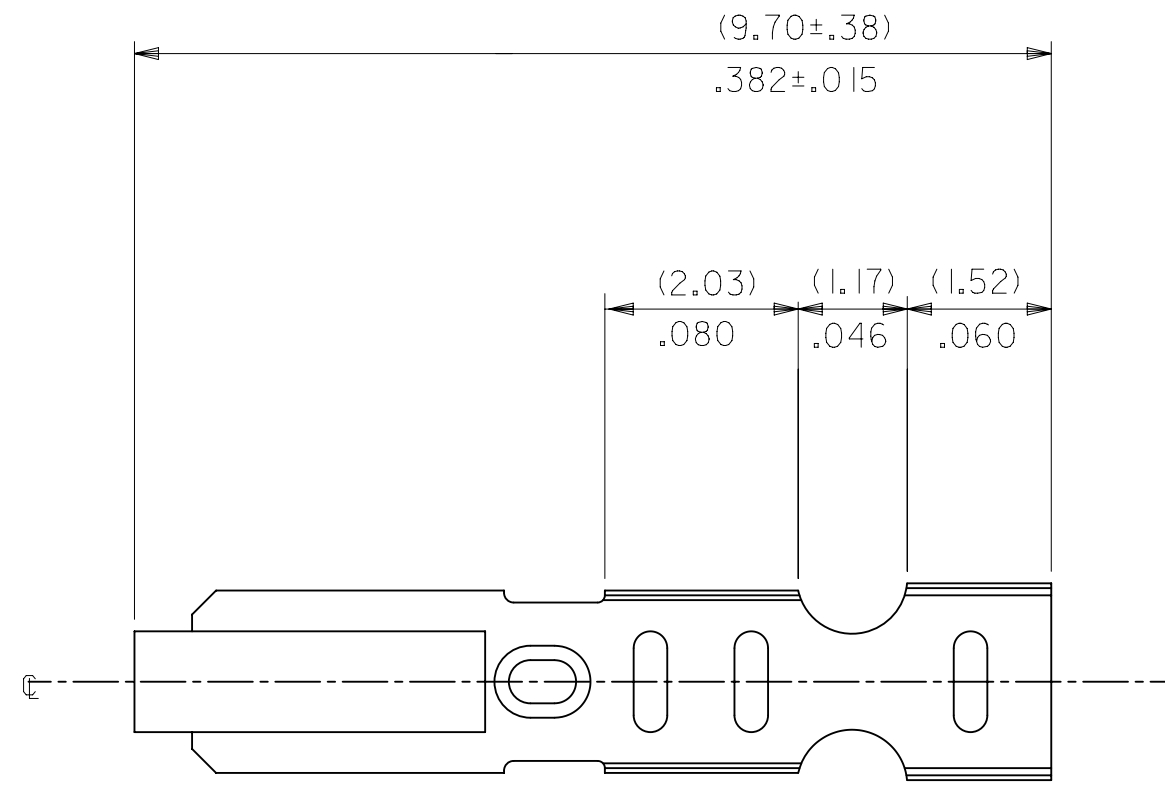
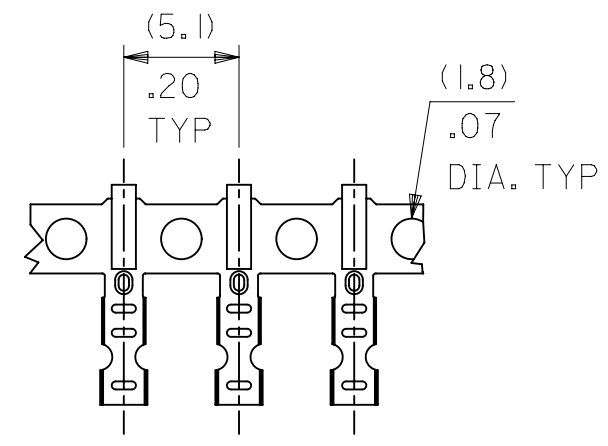


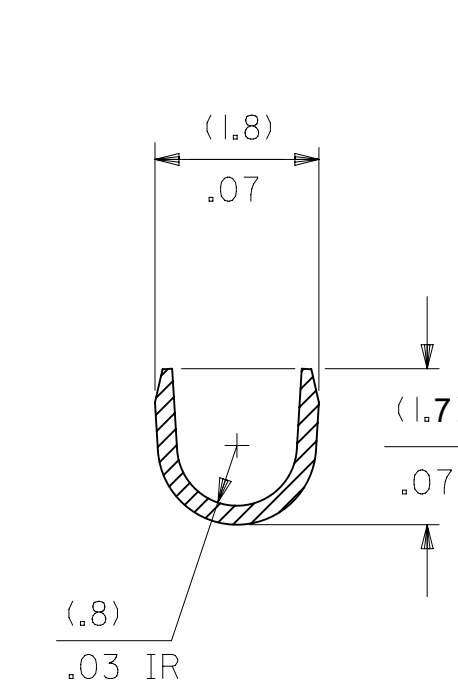
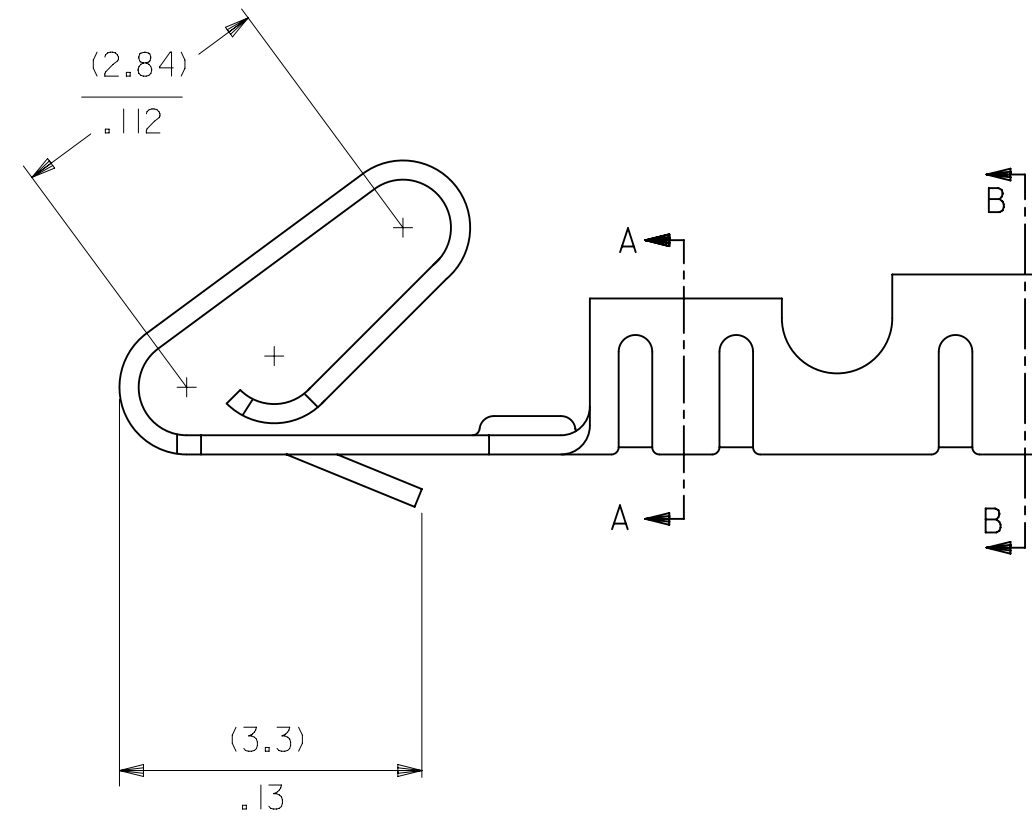
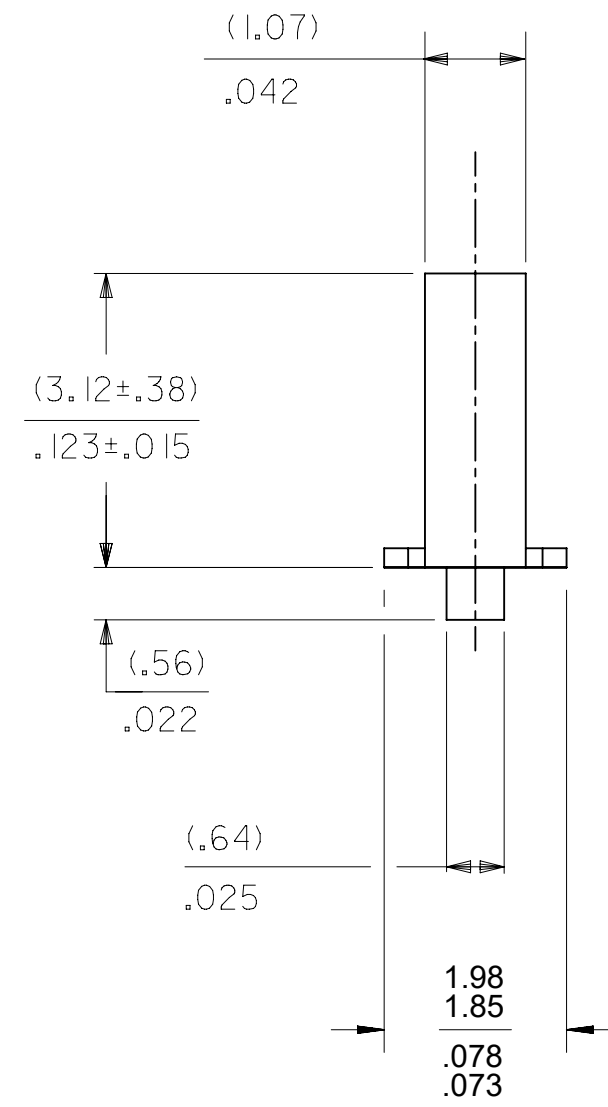
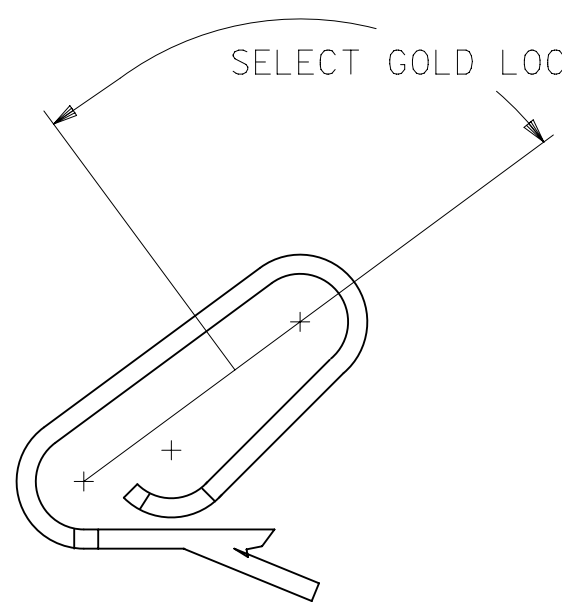
CARRIER VIEW



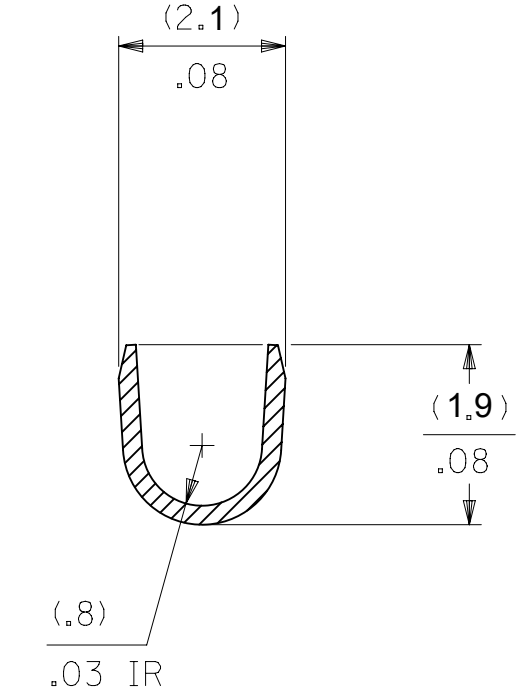
NOTES:

- MATERIAL:
(0.20)/.008 THICK BRASS
- FINISH:
122 - OVERALL TIN: (0.00381)/.000150 MIN. TIN OVER
(0.00076)/.000030 MIN NICKEL
154 - OVERALL TIN: (0.00254)/.000100 MIN. TIN OVER
(0.00127)/.000050 MIN NICKEL
P909 - OVERALL HOT TIN DIP: (0.00254)/.000100 MIN.
550 - SELECT GOLD: (0.00038)/.000015 MIN.
OVERALL GOLD FLASH: (0.00005)/.000002 MIN.
OVERALL NICKEL UNDERPLATE: (0.00076)/.000030 MIN.
555- SELECT GOLD (0.00038)/.000015 MIN.
OVERALL NICKEL UNDERPLATE: (0.00076)/.000030
558 - SELECT GOLD: (0.00076)/.000030 MIN.
OVERALL GOLD FLASH: (0.00005)/.000002 MIN.
OVERALL NICKEL UNDERPLATE: (0.00127)/.000050 MIN.
- PRODUCT SPEC: PS-10-07
- PACKAGING SPECIFICATION: LOOSE TERMINALS: PER PK-2759-001
CHAIN FORM TERMINALS: PER PK-2759-002
- CRIMP IS FOR 22-30 GA WIRE WITH (1.57)/.062 DIA INSULATION MAX.
- INSERTION FORCE OF TERMINAL INTO (2.54)/.100 CENTERLINE CONNECTOR IS 2.5 LBS. MAX
- TERMINAL RETENTION IN HOUSING IS 26.7N / 6LBS MIN. WHEN PULLED AT THE RATE OF (25.4MM) / 1 INCH PER MINUTE.
- DIMENSIONS GIVEN ACROSS CENTERLINES ARE SYMMETRICAL ABOUT THOSE CENTERLINES WITHIN HALF THE TOTAL TOLERANCE.
- THIS PART CONFORMS TO CLASS B REQUIREMENTS OF COSMETIC SPECIFICATION PS-45499-002.

SELECT GOLD LOCATION

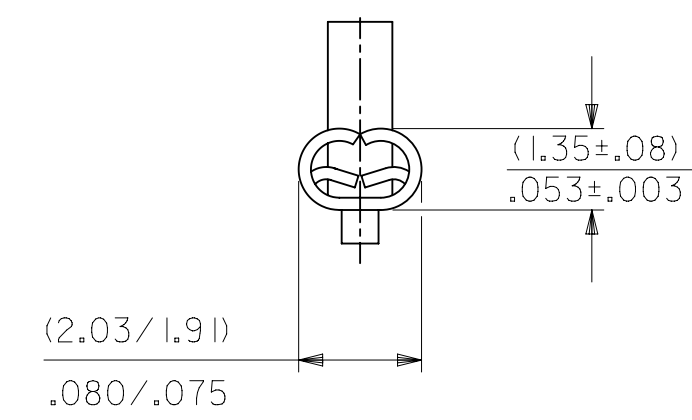


SECTION A-A
BACKGROUND OMITTED



SECTION B-B
BACKGROUND OMITTED

CRIMP DETAIL



CRIMPED TERMINAL 2759-(P909)C IS USED WITHOUT WIRE AND IS INSERTED INTO HOUSING TO PROVIDE TENSION WHEN ASSEMBLED TO HEADERS DURING SHIPMENT.

2759-(***)*

FORM

L=LOOSE

C=LOOSE CRIMPED

A=CHAIN, PER WINDING DETAIL "A"

B=CHAIN, PER WINDING DETAIL "B"

PLATING

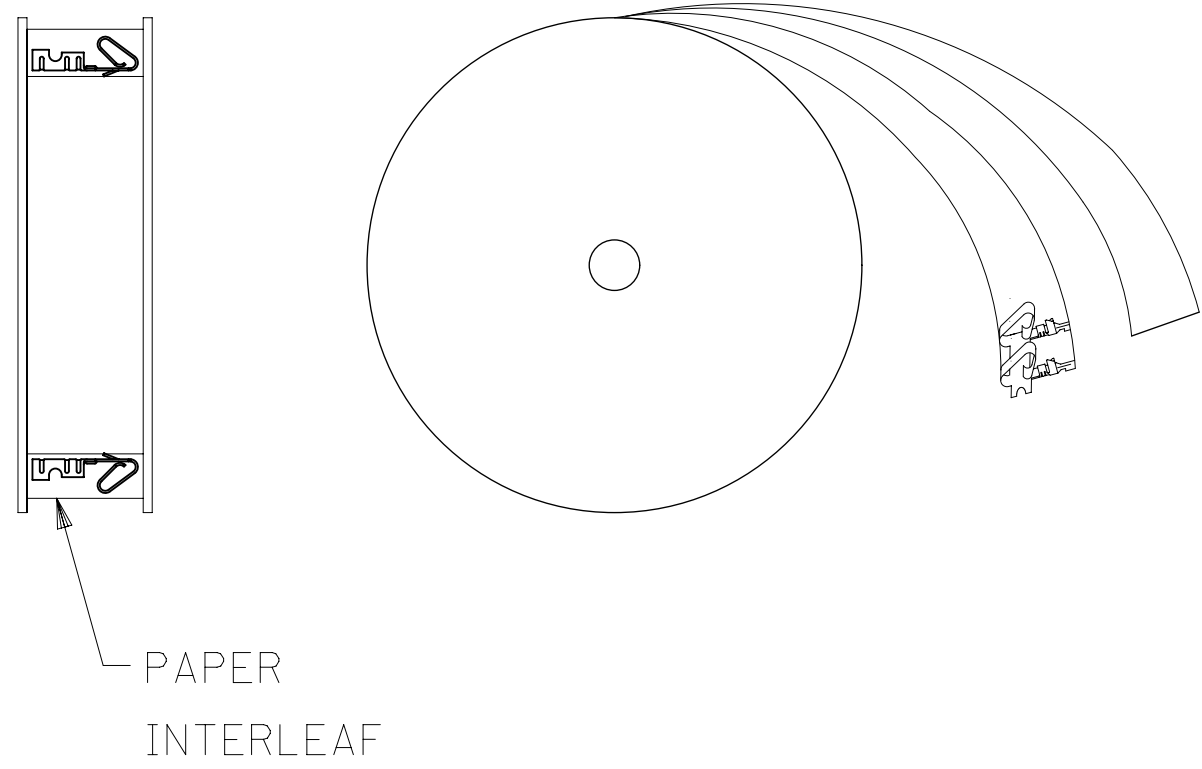
SEE NOTE 2

THIS DRAWING CONTAINS INFORMATION THAT IS PROPRIETARY TO MOLEX ELECTRONIC TECHNOLOGIES, LLC AND SHOULD NOT BE USED WITHOUT WRITTEN PERMISSION

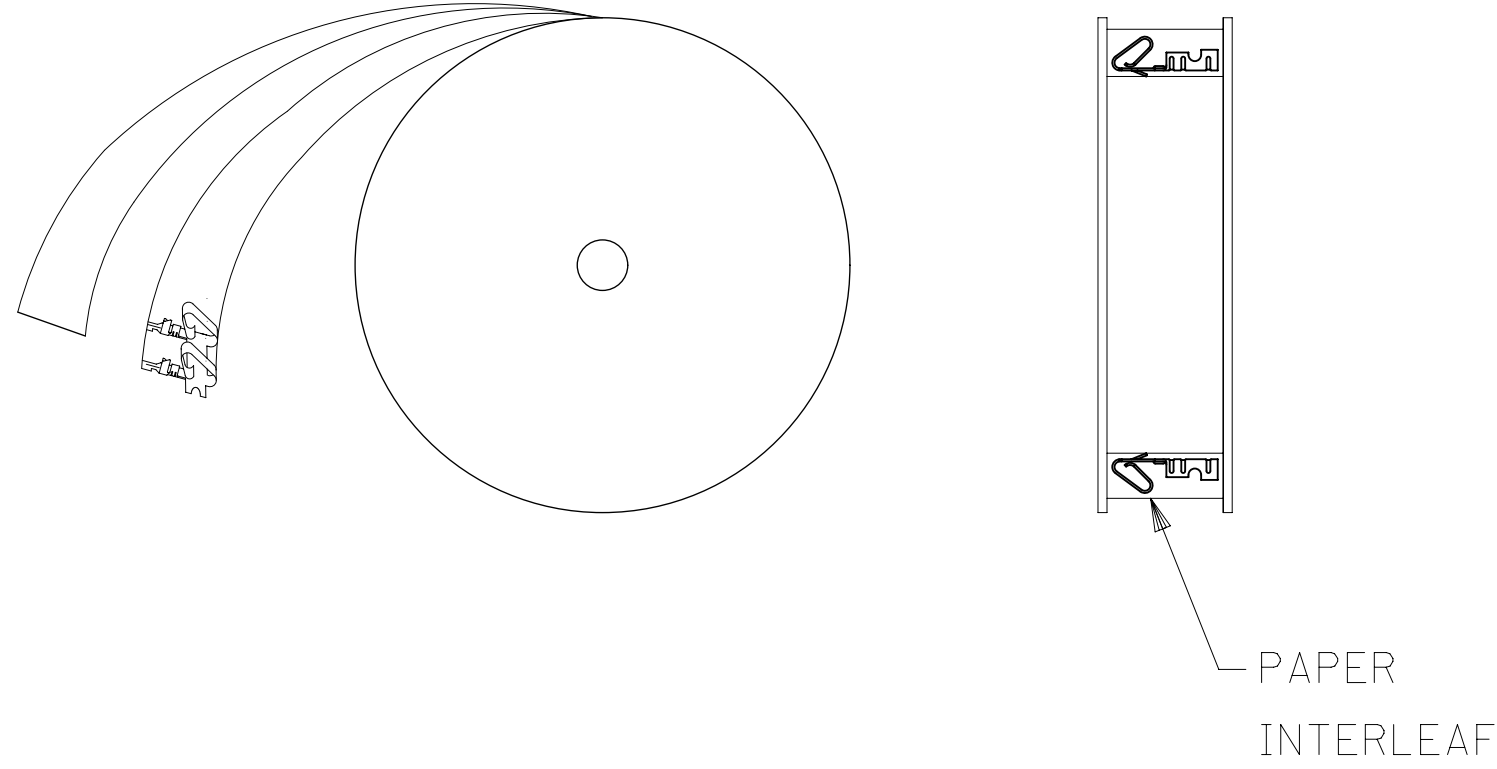
DIMENSION UNITS MM/IN	SCALE 1:1	CURRENT REV DESC: OBSOLETE PART NUMBER AS PER PCN#509451	molex			
GENERAL TOLERANCES (UNLESS SPECIFIED)		EC NO: 686785				
4 PLACES ±	±	DRWN: SUGEEB	PRODUCT CUSTOMER DRAWING			
3 PLACES ±	± 0.01	CHK'D: GGA	DOCUMENT NUMBER	DOC TYPE	DOC PART	REVISION
2 PLACES ±	0.25 ± 0.014	APPR: GGA	SD-2759	PSD	001	AW3
1 PLACE ±	0.36 ±	INITIAL REVISION:	MATERIAL NUMBER	CUSTOMER	SHEET NUMBER	
0 PLACES ±	±	DRWN: SAMIEC	SEE TABLE	GENERAL MARKET	1 OF 2	
ANGULAR TOL ±	0.5 °	APPR: FSMITH				
DRAFT WHERE APPLICABLE MUST REMAIN WITHIN DIMENSIONS	THIRD ANGLE PROJECTION	DRAWING D-SIZE	SERIES 2759			

2759-(***)*		
	PART NO.	ENG. NO.
	08-55-0101	2759-(555)B
	08-55-0102	2759-(555)L
	08-55-0126	2759-(555)A
	08-56-0109	2759-(550)B
	08-56-0110	2759-(550)L
	08-50-0113	2759-(P909)B
	08-51-0108	2759-(122)B
		2759-(122)L
	08-50-0274	2759-(P909)B
	08-55-0130	2759-(558)B
	08-55-0131	2759-(558)L
	08-50-0160	2759-(154)L
	08-50-0159	2759-(154)B


WINDING DETAIL "A"



WINDING DETAIL "B"



THIS DRAWING CONTAINS INFORMATION THAT IS PROPRIETARY TO MOLEX ELECTRONIC TECHNOLOGIES, LLC AND SHOULD NOT BE USED WITHOUT WRITTEN PERMISSION

DIMENSION UNITS	SCALE	CURRENT REV DESC:	OBSOLETED PART NUMBER	molex		
MM/IN	1:1	AS PER PCN#509451	AS PER PCN#509451			
GENERAL TOLERANCES (UNLESS SPECIFIED)		EC NO: 686785		CRIMP TERMINAL		
	MM	INCH		22-30 GA WIRE		
4 PLACES	±	±	DRWN: SUGEEB	2021/08/31	PRODUCT CUSTOMER DRAWING	
3 PLACES	±	± 0.01	CHK'D: GGA	2022/02/28	DOCUMENT NUMBER	
2 PLACES	± 0.25	± 0.014	APPR: GGA	2022/02/28	SD-2759	DOC TYPE
1 PLACE	± 0.36	±	INITIAL REVISION:		PSD	DOC PART
0 PLACES	±	±	DRWN: SAMIEC	1987/07/28	001	REVISION
			APPR: FSMITH	2012/03/20	AW3	
ANGULAR TOL	± 0.5 °				SHEET NUMBER	
DRAFT WHERE APPLICABLE MUST REMAIN WITHIN DIMENSIONS		THIRD ANGLE PROJECTION		DRAWING	SERIES	MATERIAL NUMBER
				D-SIZE	2759	CUSTOMER
					SEE TABLE	GENERAL MARKET
						2 OF 2

DOCUMENT STATUS	P1	RELEASE DATE	2022/02/28	11:53:39
-----------------	----	--------------	------------	----------