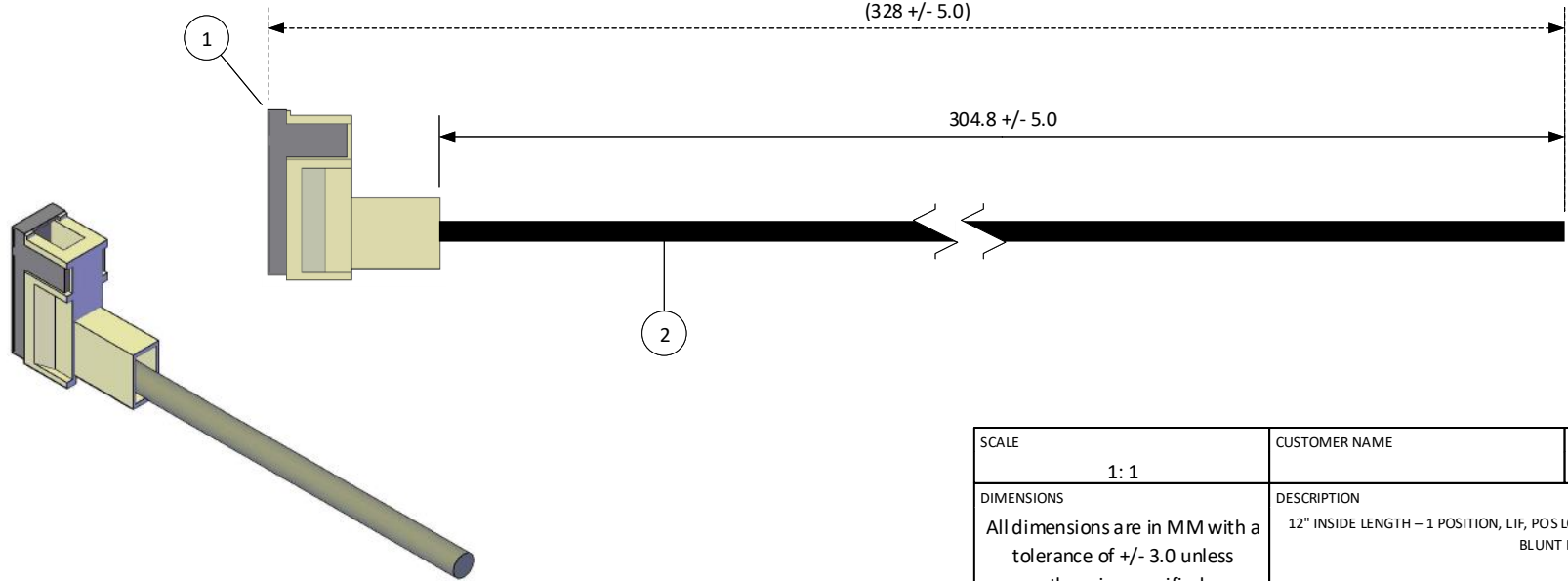
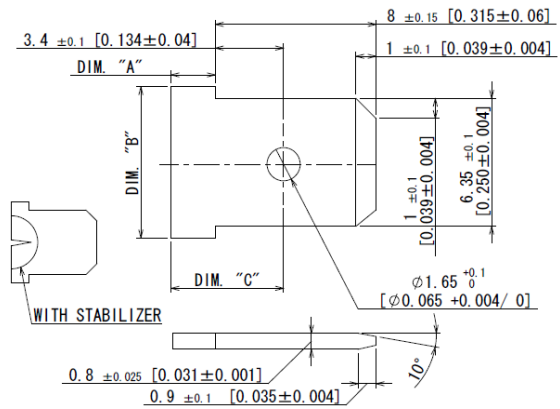


THIS DRAWING CONTAINS INFORMATION THAT IS PROPRIETARY TO J.S.T. AND SHALL NOT BE USED OR SHOWN WITHOUT WRITTEN PERMISSION.

| ITEM | CONNECTOR PART NO. | DESCRIPTION | IPI CHECK | EOR CHECK | Applicable Tooling |
|------|------------------------|---------------------------------------|-----------|-----------|----------------------|
| 1 | RARSP-1V-00 & RARFC-1V | 1 POS RIGHT-ANGLE RSF HOUSING & COVER | | | APPLICATOR |
| 1 | RASRSF-61-250A | RIGHT-ANGLE RSF TERMINAL – BRASS | | | SUGGESTED MATING TAB |
| 2 | UL1015, 16 AWG | BLACK | | | |

| | WITHOUT STABILIZER | WITH STABILIZER |
|----------|--------------------|---------------------------|
| DIM. "A" | 2.20 [0.087] MIN | 4.20 ±0.15 [0.165 ±0.006] |
| DIM. "B" | 7.40 [0.291] MIN | 7.98 [0.314] MIN |
| DIM. "C" | 5.90 [0.232] MAX | (7.6) |



JST

| | | | |
|--|--|---|-----------------------------|
| SCALE 1: 1 | | CUSTOMER NAME | CUSTOMER PART NO. |
| DIMENSIONS All dimensions are in MM with a tolerance of +/- 3.0 unless otherwise specified. | | DESCRIPTION 12" INSIDE LENGTH – 1 POSITION, LIF, POS LOCK, .250, FLAG, SINGLE-END ASSY, BRASS, BLUNT LEAD, F | |
| DRAWN BY STEVEN PILKINGTON | | ASSEMBLY PART NO. A01RARSFP16K305A | |
| CHECKED BY JUSTIN BAKER | | DRAWING NO. & REVISION GAM-147 | REVISED 3/16/2016 |

| REV. | DESCRIPTION | DATE | BY |
|------|-------------|------|----|
| | | | |