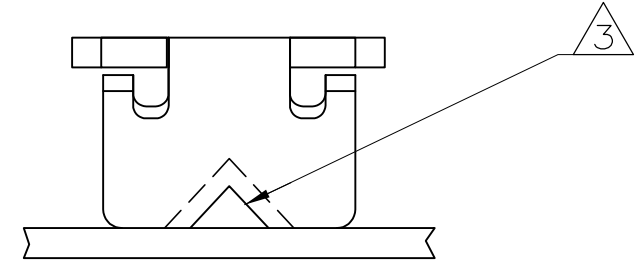
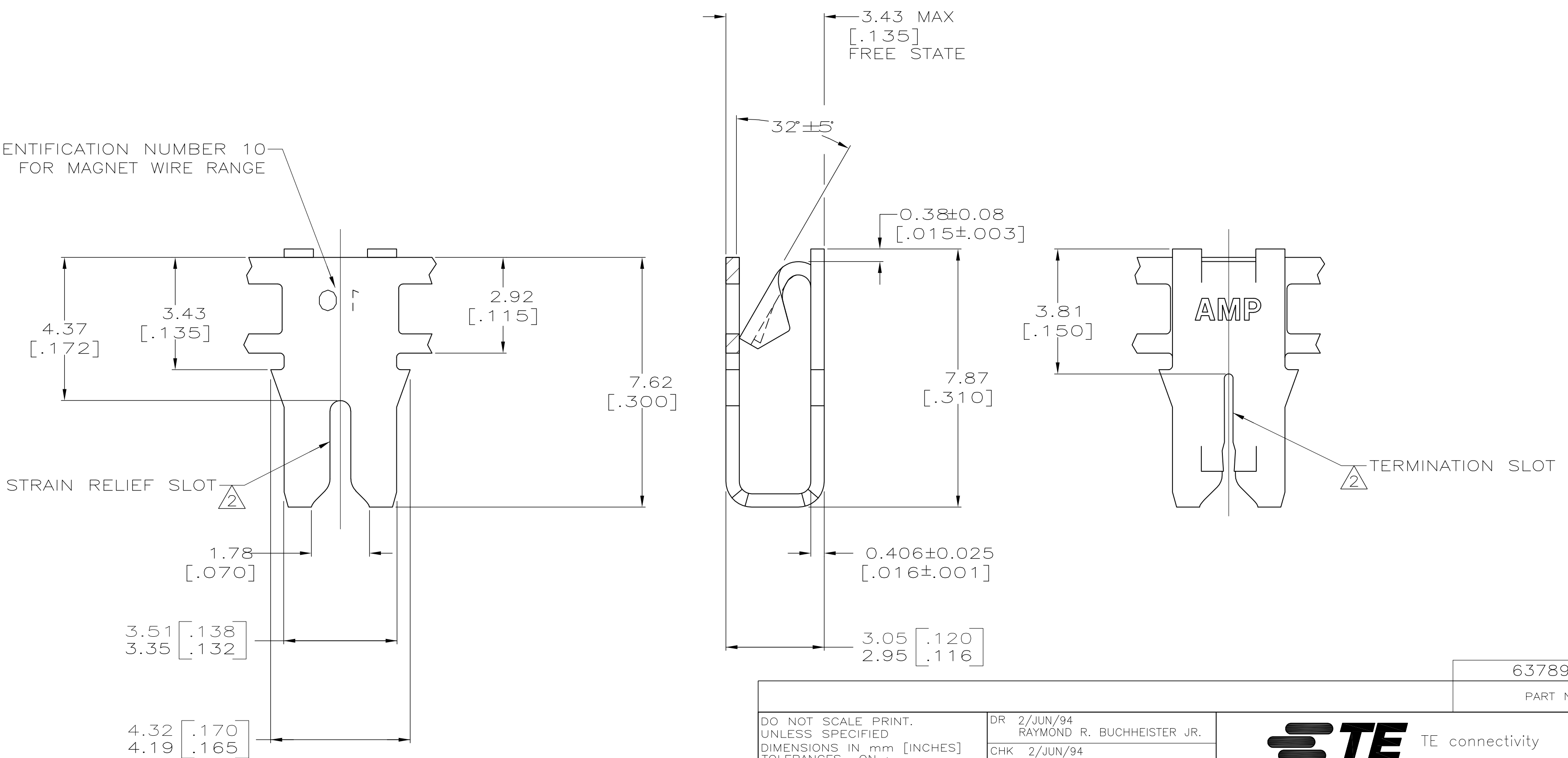


LOC		DIST		P		F		ZONE		LTR		REVISIONS	
DESCRIPTION		DATE		APPD									
AF	50									A1	ECR-15-005665	10AUG2015	BDA/PKS

- 1 CONTINUOUS STRIP ON REELS WITH TERMINALS LOCATED ON 5.59 ± 0.08 [$.220 \pm .003$] CENTERS.
- ② SLOT ACCEPTS $0.36-0.57\text{mm}$ [#27-#23] AWG COPPER MAGNET WIRE.
 SLOT ACCEPTS $0.51-0.64\text{mm}$ [#24-#22] AWG ALUMINUM MAGNET WIRE.
 ALUMINUM WIRE RANGE APPLIES FOR POST-TIN PLATED VERSIONS ONLY. A SINGLE WIRE ONLY.
- ③ POKE-IN ACCEPTS A $0.50-0.90\text{mm}^2$ [#20-#18] AWG SOLID OR FUSED STRANDED LEAD WIRE.



IDENTIFICATION NUMBER 10 FOR MAGNET WIRE RANGE



63789-1

PART NO

DO NOT SCALE PRINT. UNLESS SPECIFIED DIMENSIONS IN mm [INCHES] TOLERANCES ON : 2 PLC DEC ± 0.25 [.010] 3 PLC DEC \pm - ANGLES \pm -	DR 2/JUN/94 RAYMOND R. BUCHEISTER JR.		NAME	TERMINAL, POKE-IN, 300 SERIES MAG-MATE™
	CHK 2/JUN/94 MICHAEL S. FEHER			
MATERIAL	APPD 2/JUN/94 KURT A. RANDOLPH	PRODUCT SPEC	SIZE	CAGE CODE
4M BRASS	APPD 2/JUN/94 TERRY L. SHUTTER			
FINISH	APPLICATION SPEC	WEIGHT	SCALE	DRAWING NO
0.002032 [.000080] MIN TIN PLATE	114-2046	-	10:1	C-63789
THIS DRAWING IS A CONTROLLED DOCUMENT FOR AMP INCORPORATED. IT IS SUBJECT TO CHANGE AND THE CONTROLLING ENGINEERING ORGANIZATION SHOULD BE CONTACTED FOR THE LATEST REVISION.		SHEET 10F 1		REV. A1