

ITEM	PART#	DESCRIPTION	QTY	UOM
A	2077820004	4ckt Receptacle assembly for Squba 3.6	1	PC
B	2077770001	Squba 3.6 female terminal 16 AWG	4	PC
C	--	PAPER PRINTED PAPER WHITE	1	PC

FROM	TO	DESCRIPTION	COLOR
A1	--	1X16AWG DISC MPPE BK UL11028 HOOKUP	BLACK
A2	--	1X16AWG DISC MPPE BK UL11028 HOOKUP	BLACK
A3	--	1X16AWG DISC MPPE BK UL11028 HOOKUP	BLACK
A4	--	1X16AWG DISC MPPE BK UL11028 HOOKUP	BLACK

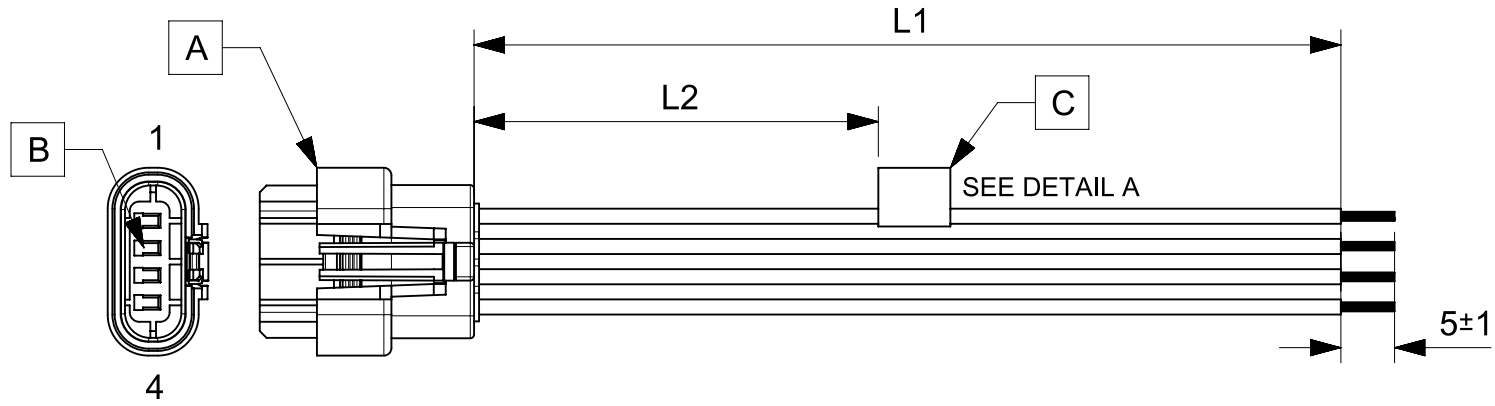


TABLE			
PART NUMBER	L1	L2	TITLE
2166211041	150±8	63 REF	SQUBA3.6 R-S 4CKT 150MM Sn
2166211042	300±10	138 REF	SQUBA3.6 R-S 4CKT 300MM Sn
2166211043	600±10	288 REF	SQUBA3.6 R-S 4CKT 600MM Sn

**NOTES**

1. Connector view shown is from mating side.
2. Leak test must be ensured for sealed connector.
3. Free ends must be stripped, twisted & tinned. The length of tinning is 5±1mm. Tinning dia must be 1.9mm Max.
4. Label text must be 2mm max. in height with Arial font.
5. Label must be wrapped in Flag type on a single cable.

REVISION			
DATE	REV	DESCRIPTION	CHANGER
2020/06/23	A	INITIAL RELEASE	ARAJU
2020/07/16	A1	TINNING DIA UPDATED	ARAJU

MOLEX P/N  
MOLEX  
BATCH WK/YR

DETAIL A

FUNCTIONAL SYMBOLS $\nabla_A = 0$ $\nabla_E = 0$ $\nabla_P = 0$ DIVISIONAL SYMBOLS	THIS DRAWING CONTAINS INFORMATION THAT IS PROPRIETARY TO MOLEX ELECTRONIC TECHNOLOGIES, LLC AND SHOULD NOT BE USED WITHOUT WRITTEN PERMISSION		CURRENT REV DESC:		
	DIMENSION UNITS	SCALE	GENERAL TOLERANCES (UNLESS SPECIFIED)		
	mm	NTS	ANGULAR TOL ± °		
	EC NO: 641908		4 PLACES ±		
DRWN: ARAJU		3 PLACES ±		2020/07/16	
CHK'D: RDESAI01		2 PLACES ±		2020/07/21	
APPR: RDESAI01		1 PLACE ±		2020/07/21	
INITIAL REVISION:		0 PLACES ±		2020/06/23	
DRWN: ARAJU		DRAFT WHERE APPLICABLE MUST REMAIN WITHIN DIMENSIONS		2020/07/08	
APPR: RDESAI01		THIRD ANGLE PROJECTION	DRAWING	SERIES	DOCUMENT NUMBER
			A4-SIZE	216621	2166211041
					DOC TYPE
					PSD
					DOC PART
					000
					REVISION
					A1
					SHEET NUMBER
					1 OF 1