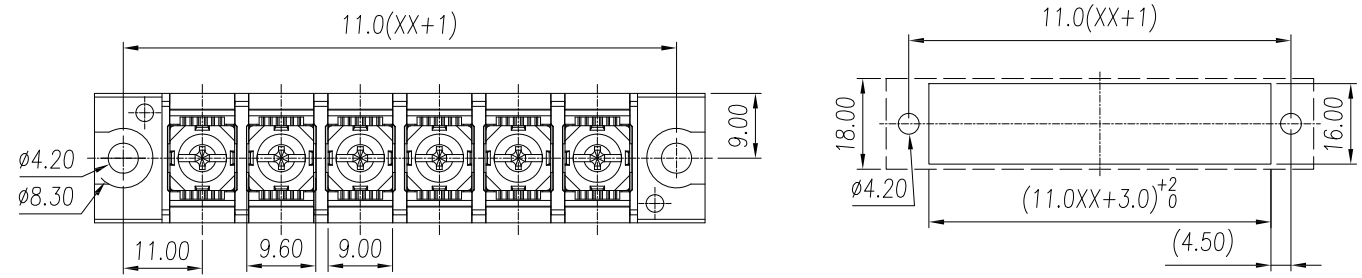
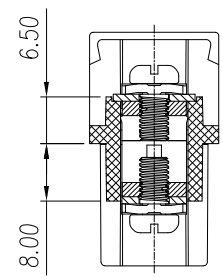
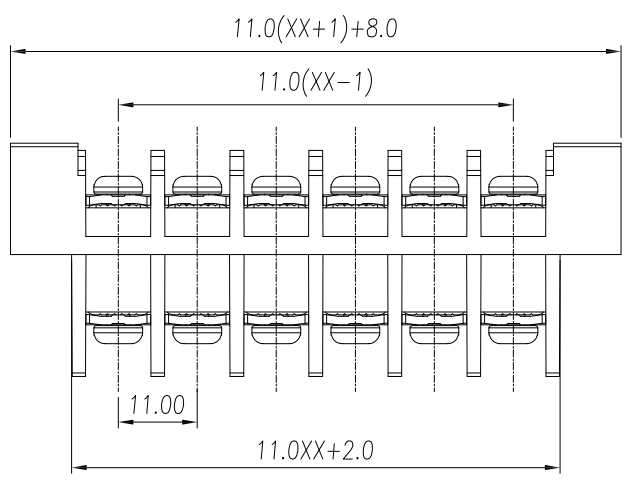
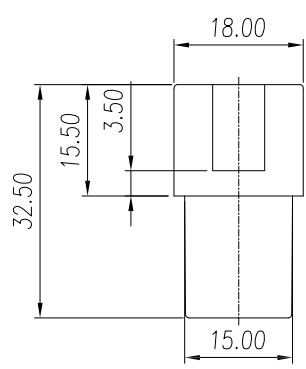


APPROVED: _____
 DATE: _____ TITLE: _____

Rev	AWO #	Description	Date	Appr
-		RELEASED	11/26/18	



RECOMMENDED MOUNTING CUT-OUT



Poles: 02 thru 15

linear dimension (Tolerances Standard)								—	∕	⊥	
variable		over	over	over	over	over	over		over	over	
range	to	6	10	30	60	100	160	to	10	100	
	to	10	30	60	100	160	to	10	100	to	
tolerance		±0.20	±0.30	±0.50	±0.70	±1.00	±1.30	±1.60	0.10	0.30	0.60

SPECIFICATIONS:
 Material:
 Insulator: PBT, rated UL 94V-0
 Insulator color: Black
 Contacts: Copper Alloy, Tin plated
 Screw: M4 Steel
 Electrical:
 Voltage rating: 300 V
 Current rating: 30 A
 Dielectric withstanding voltage: 2,000 VAC for 1 minute
 Mechanical:
 Wire Range: 22~10 AWG
 Torque: 1.8 (N.m)
 Temperature Rating:
 Operating temperature: -40°C to +130°C
 Environmental:
 Lead free, RoHS compliant.



UNLESS OTHERWISE SPECIFIED
 ALL DIMENSIONS ARE MILLIMETERS
 TOLERANCES: EXCEPT AS NOTED

SEE CHART

APPROVALS		DATE
DRAWN	AY	11/26/18
CHECKED	AC	11/26/18
APPROVED		

ADAM TECH INTERCONNECTS 909 Rahway Avenue,
 Union, NJ 07083
 Phone: 908-687-5000
 Fax: 908-687-5710

TITLE: **TERMINAL BLOCK, .433 [11.00] PITCH**

SIZE	PART NO.	REV.
X	TBU-XX-W1	-
REF: S00067C	SCALE: NTS	SHEET 1 OF 1