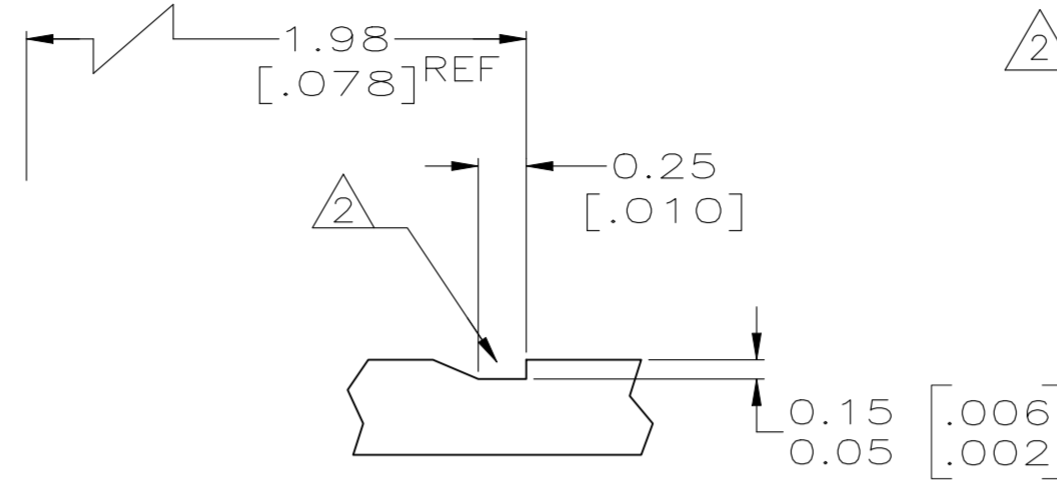
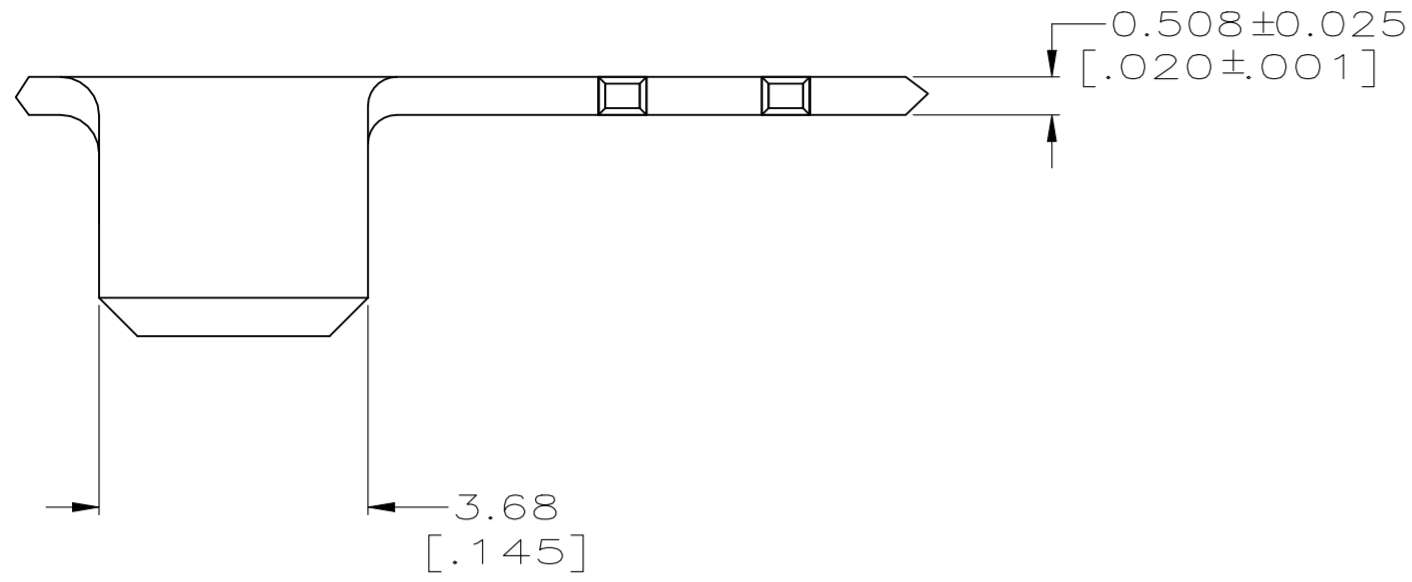


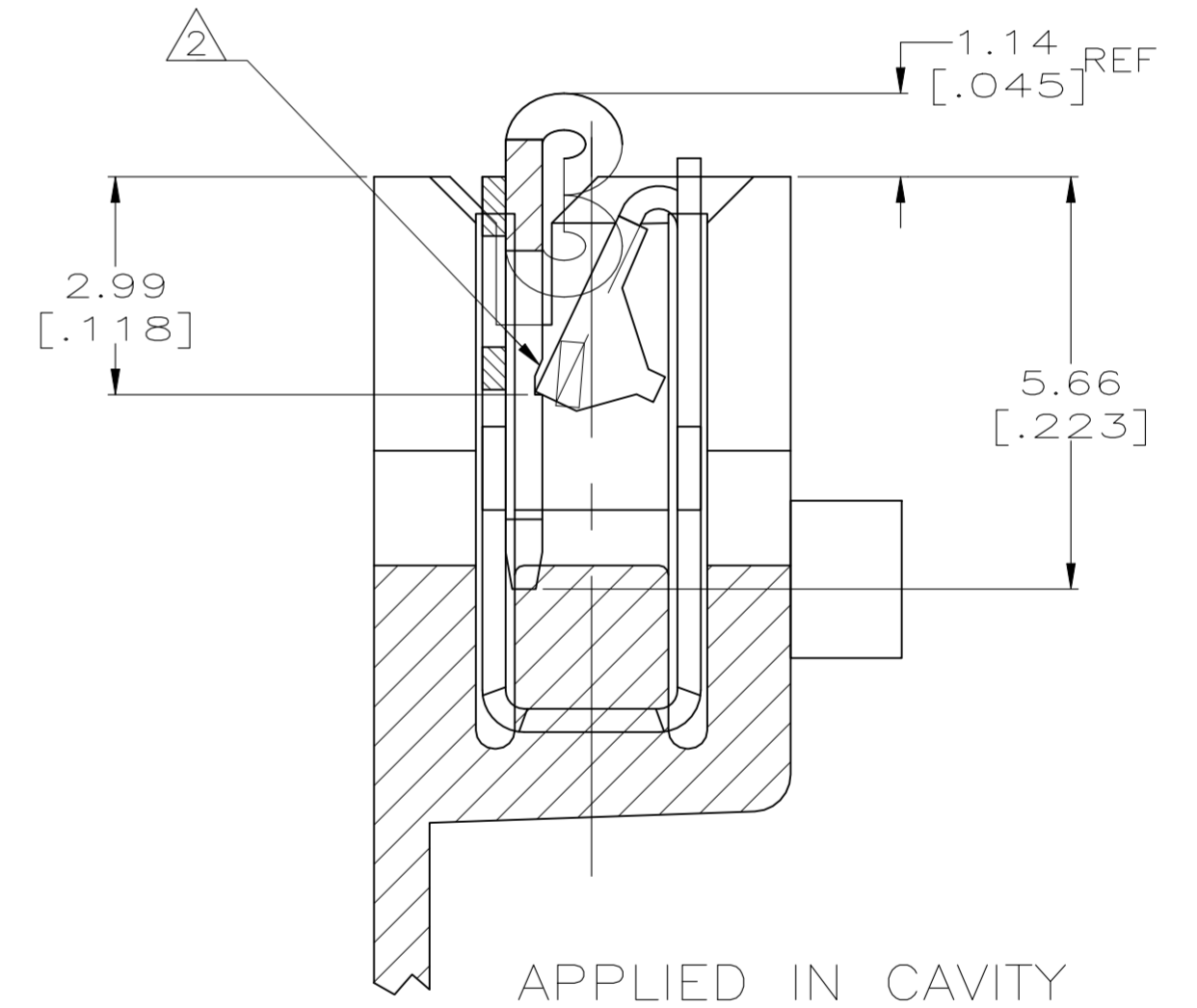
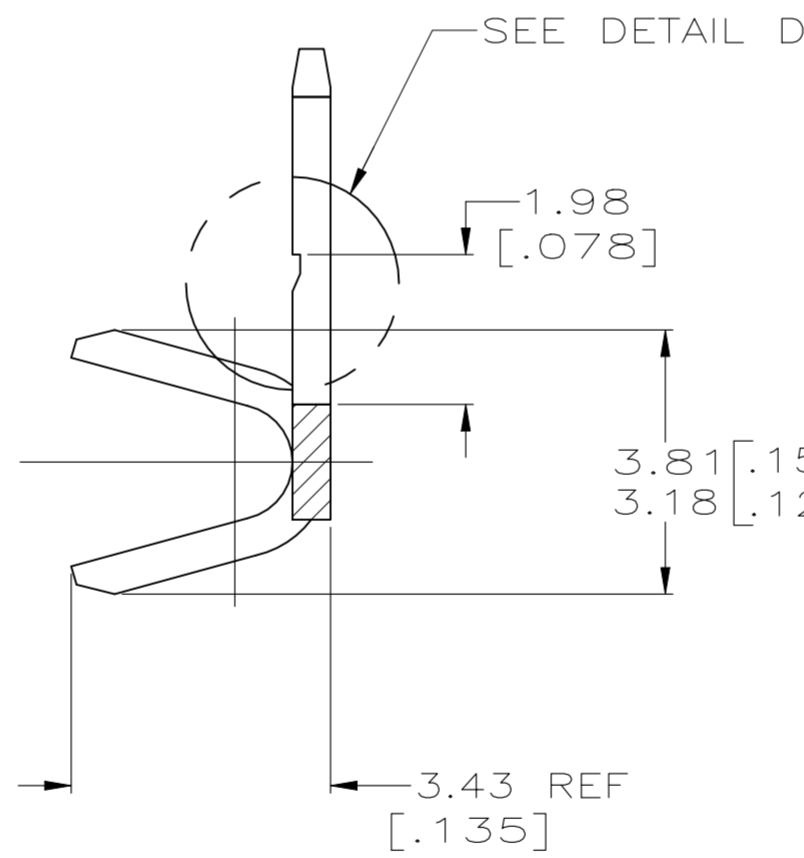
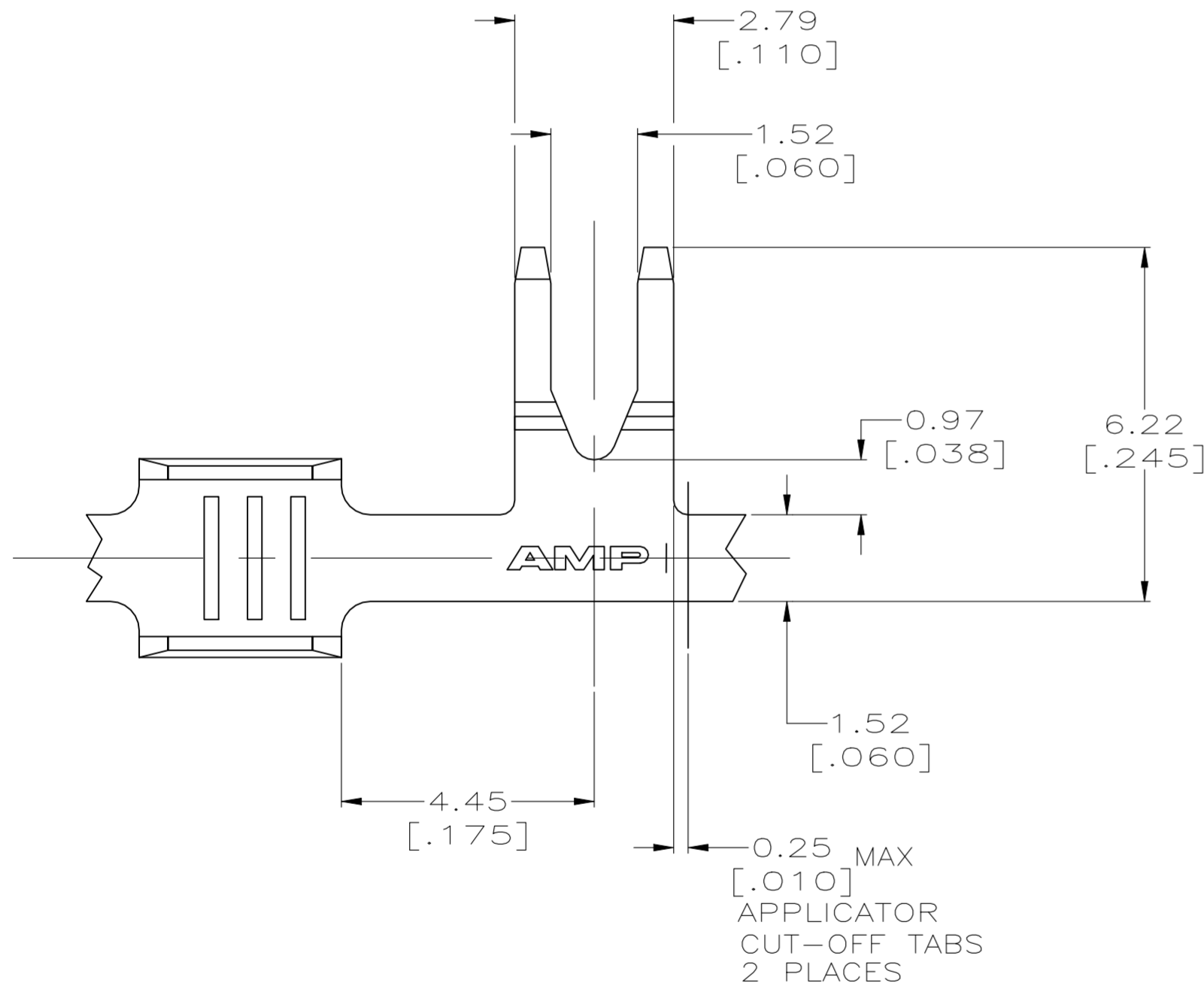
THIS DRAWING IS UNPUBLISHED. RELEASED FOR PUBLICATION
 © COPYRIGHT - By - ALL RIGHTS RESERVED.

LOC	DIST	REVISIONS					
AF	50	P	LTR	DESCRIPTION	DATE	DWN	APVD
		D4		REVISED PER ECR-23-172581	20APR2023	PC	TD

- 1 CONTINUOUS STRIP ON REELS.
- 2 FOR OPTIMUM RETENTION IN POKE-IN MAG-MATE TERMINALS, THE SERRATION, MUST BE ENGAGED WITH THE EDGE OF THE LEAF.



D DETAIL
 SCALE 25:1
 ROTATED 90° CW



4.32 [.170]	F	2.79 [.110]	1.75 [.069]	1.3mm ² [16]
STRIP LENGTH ±0.38 [±0.15]	TYPE	WIDTH	±0.51 [±.002]	0.8mm ² [18]
			HEIGHT	WIRE
WIRE BARREL CRIMP				

REVERSE	0.5-1.4mm ² [#20-#16] AWG	1217406-2
STANDARD	0.5-1.4mm ² [#20-#16] AWG	1217406-1
REELING	WIRE RANGE	PART NUMBER

THIS DRAWING IS A CONTROLLED DOCUMENT.		DWN MICHAEL S. FEHER 08MAY2000	TE Connectivity	
DIMENSIONS: mm [INCHES]		CHK KURT A. RANDOLPH 08MAY2000	NAME	
TOLERANCES UNLESS OTHERWISE SPECIFIED:		APVD KURT A. RANDOLPH 08MAY2000	PRODUCT SPEC	
0 PLC ± -		108-22045	APPLICATION SPEC	
1 PLC ± -		114-2050	SIZE	
2 PLC ± 0.25[.010]		WEIGHT -	CAGE CODE	DRAWING NO
3 PLC ± -		CUSTOMER DRAWING	A2 00779	C=1217406
4 PLC ± -		SCALE 10:1	SHEET 1 OF 1	REV D4
ANGLES ± -				
FINISH				
BRASS		TIN PLATE		