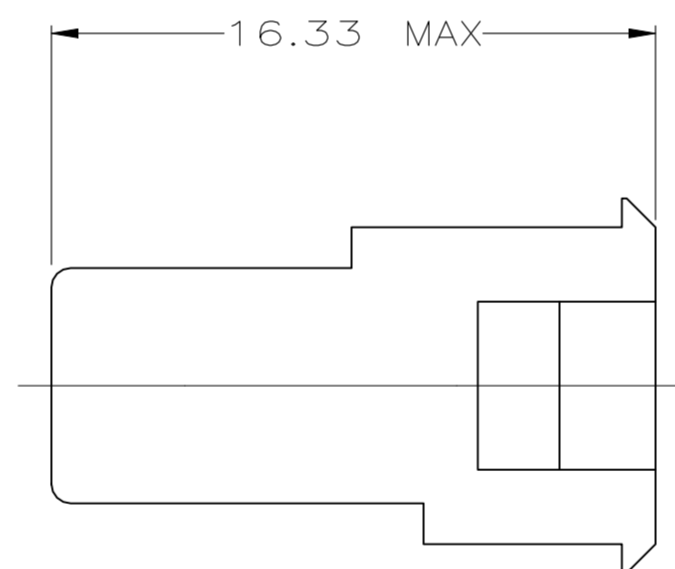
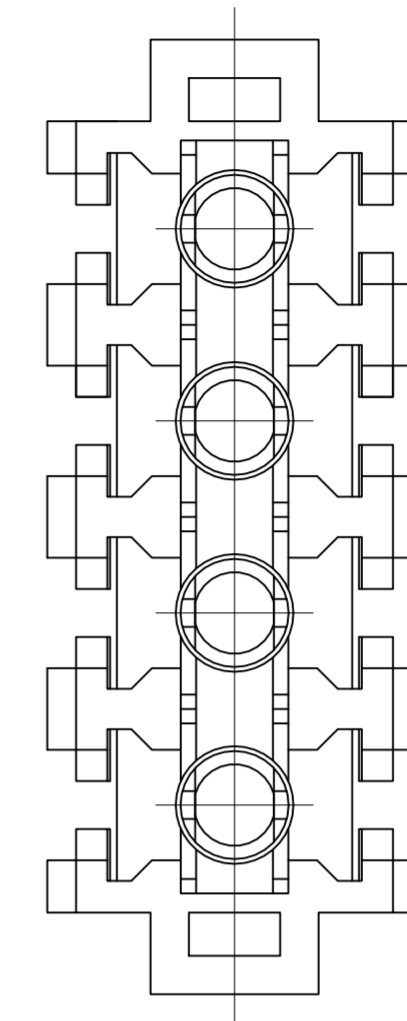
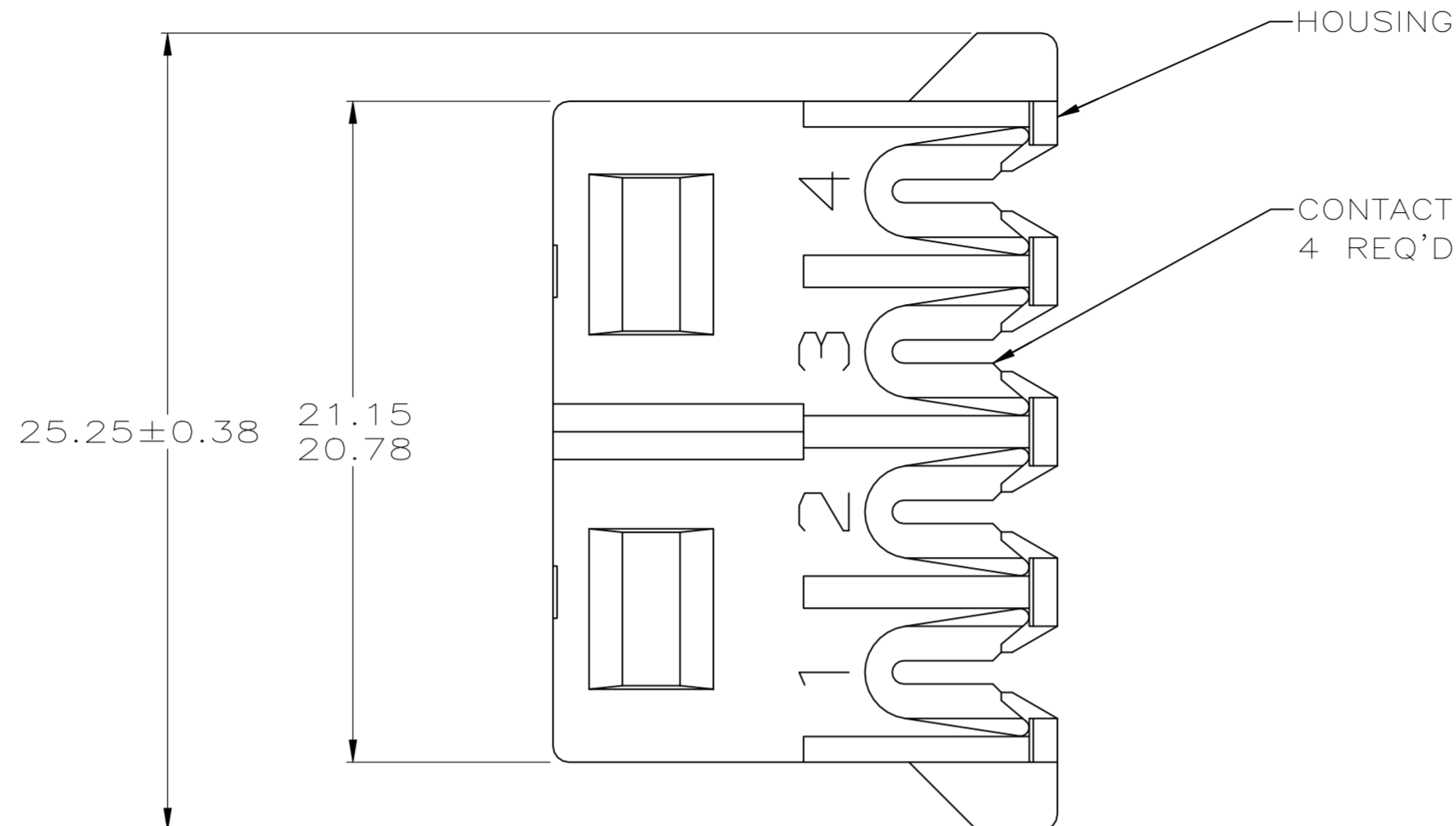
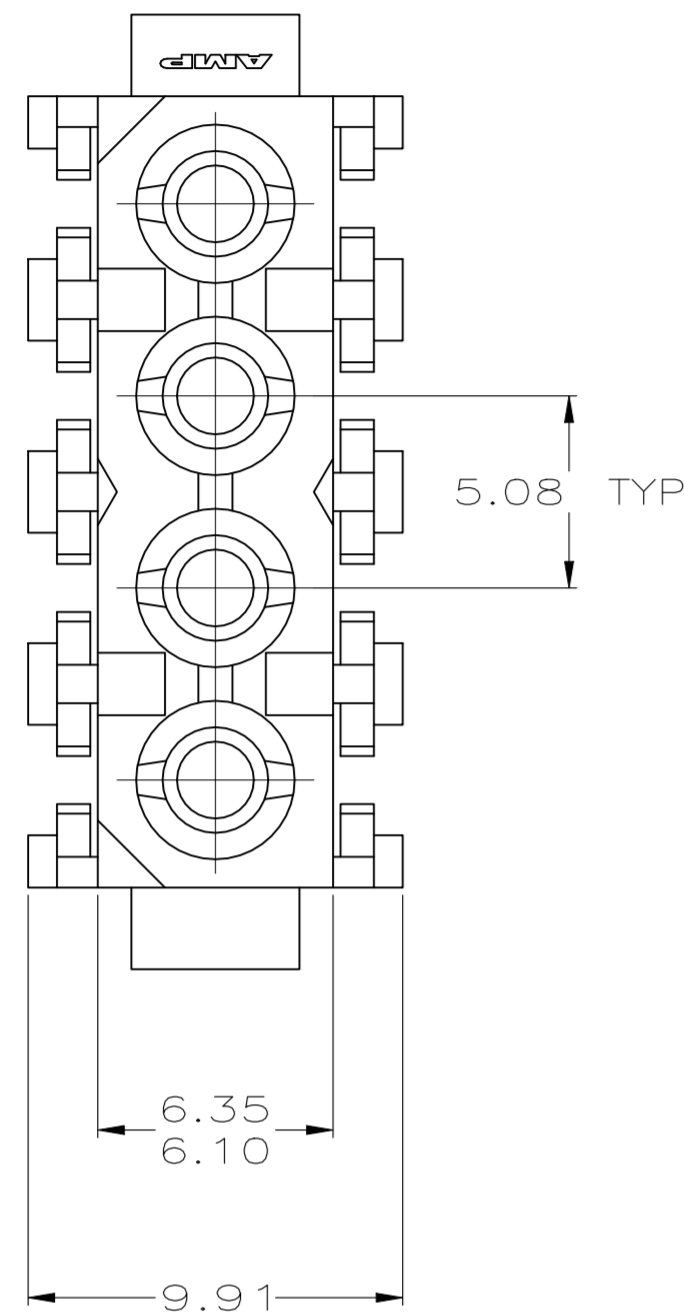


THIS DRAWING IS UNPUBLISHED. RELEASED FOR PUBLICATION
 © COPYRIGHT - TE Connectivity Ltd. ALL RIGHTS RESERVED.

REVISIONS				
P	LTR	DESCRIPTION	DATE	APVD
C2		REVISED PER ECR-21-117185	22OCT2021	PJ VS



- 1. NOTE DELETED.
- 2. DIMENSION SHOWN REPRESENT PRODUCT IN DRY CONDITION. ADDITIONAL 2% GROWTH DUE TO END USE LOCATION MOISTURE ABSORPTION MAY OCCUR AND SHOULD BE ACCOUNTED FOR.

BLUE	1.25 mm ² (16 AWG)	PHOS BRONZE, TIN	NYLON,UL 94V-0	794036-4
RED	0.4 mm ² (22 AWG)	PHOS BRONZE, TIN	NYLON,UL 94V-0	794036-3
YELLOW	0.5 mm ² (20 AWG)	PHOS BRONZE, TIN	NYLON,UL 94V-0	794036-2
ORANGE	0.8 mm ² (18 AWG)	PHOS BRONZE, TIN	NYLON,UL 94V-0	794036-1
COLOR	WIRE SIZE	CONTACT MATERIAL AND FINISH	HOUSING MATERIAL	PART NO

MM	IN	MM	IN
9.91	.390	-	-
6.35	.250	25.25	.994
6.10	.240	21.15	.833
5.08	.200	20.78	.818
0.13	.005	16.33	.643

CONVERSION TABLE

THIS DRAWING IS A CONTROLLED DOCUMENT.

DWN K. WHITAKER 2-4-94	TE Connectivity
CHK R. SWING 2-4-94	
APVD -	NAME
PRODUCT SPEC -	PLUG ASSEMBLY, INSULATION DISPLACEMENT, COMMERCIAL MATE-N-LOK(TM)
APPLICATION SPEC -	SIZE A2
MATERIAL SEE TABLE	CAGE CODE 00779
FINISH SEE TABLE	DRAWING NO C=794036
WEIGHT 0.000000	RESTRICTED TO -
CUSTOMER DRAWING	SCALE 5:1 SHEET 1 OF 1 REV C2