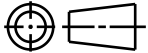
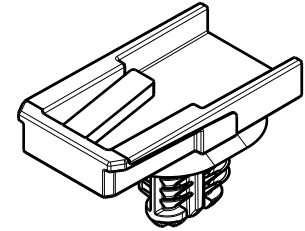
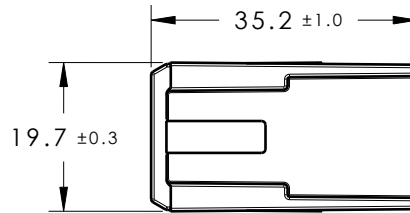


CATIA V5



Revision Level			Revision Record	Changed	Date	Approved	Date
Drawing	State	Part					
01.1	Design Release	-	SEE ECN# 014728	HDC	11/01/18	NHK	11/01/18

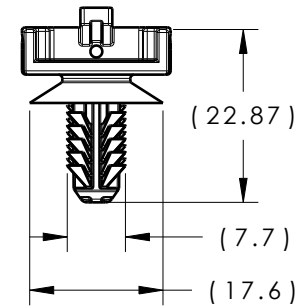
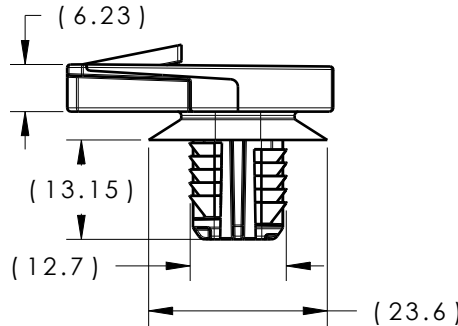


ISOMETRIC VIEW

REFERENCE:

PERFORMANCE REQUIREMENTS AT DRY AS MOLDED:

1. FIR TREE PUSH IN FORCE: 45 NEWTONS (10 LBS) MAX IN EACH APPLICABLE OVAL HOLE SIZE AND A PLATE THICKNESS OF 1.8mm.
2. FIR TREE PULL OUT FORCE: 110 NEWTONS (25 LBS) MIN IN EACH APPLICABLE OVAL HOLE SIZE AND A PLATE THICKNESS OF 1.8mm.
3. SHEET METAL THICKNESS RANGE: 0.60mm - 6.75mm
4. APPLICABLE OVAL HOLE SIZES:
 - A. 6.2 X 12.2mm
 - B. 6.5 X 12.5mm
 - C. 6.5 X 13.0mm
 - D. 7.0 X 12.0mm
5. MAXIMUM PERCENT REGRIND PERMISSIBLE: 25%
6. MAX ALLOWABLE FLASH TO BE: 0.25mm
7. MAX ALLOWABLE MISMATCH TO BE: 0.1mm



Material
SEE CHART
COLOR: SEE CHART

Units **millimeters**

Tolerance defined on each dimension

The copyright of this drawing is reserved by HellermannTyton. It is issued on condition that it is not reproduced, copied or disclosed to a third party, either wholly or in part, without the consent of HellermannTyton.

Drawn	HDC	03/23/18
Approved	EJH	03/23/18
HellermannTyton		
North America Email: corp@htamericas.com Web: www.hellermann.tyton.com		

GLOBAL PART DESCRIPTION		MATERIAL	COLOR
CCOVAL23OS10-PA66HIRHS-BK		PA66HIRHS	BLACK
Article/Type-No	CCOVAL23OS10		Scale 1:1
Title	23mm CONNECTOR CLIP W/ 10mm FTOVAL		Project Number 18-1177
Drawing-No	PRODUCTION	Phase	Format AH
18-1177-001-CSU	01.1		Sheet 1/1