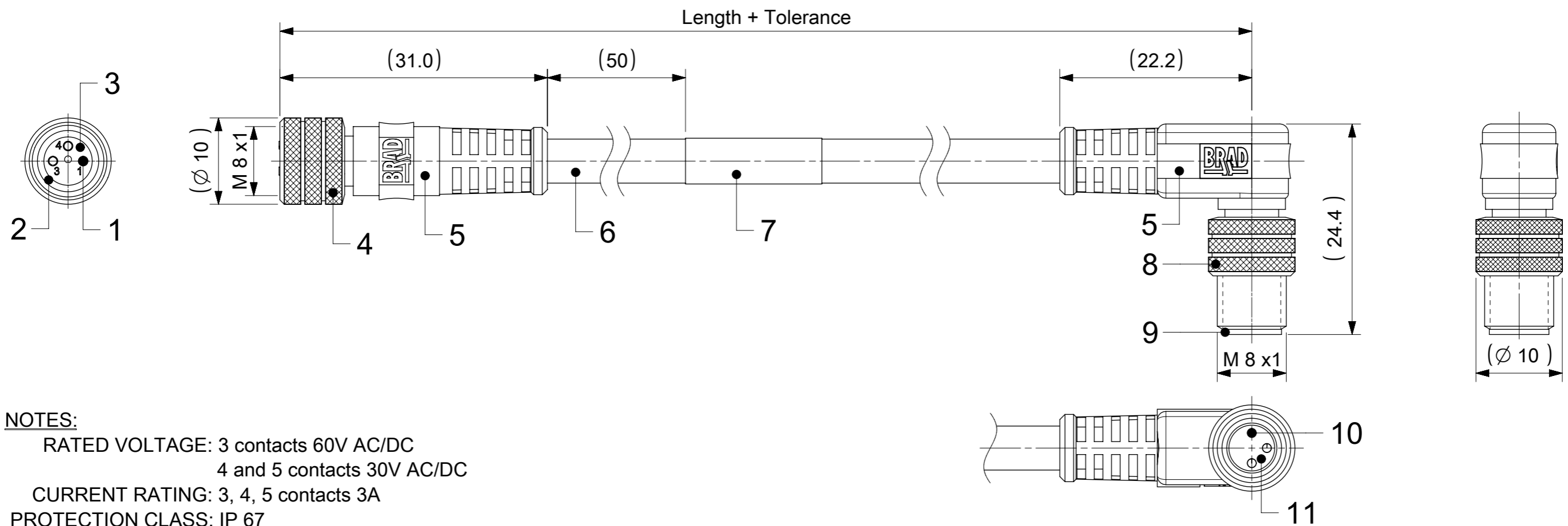


FEMALE PLUG M8 STRAIGHT TO MALE PLUG M8 90° ANGLED



NOTES:

RATED VOLTAGE: 3 contacts 60V AC/DC
4 and 5 contacts 30V AC/DC

CURRENT RATING: 3, 4, 5 contacts 3A

PROTECTION CLASS: IP 67

TEMPERATURE: -25°C / +80°C

CONTACTS POSITION FRONT VIEW:

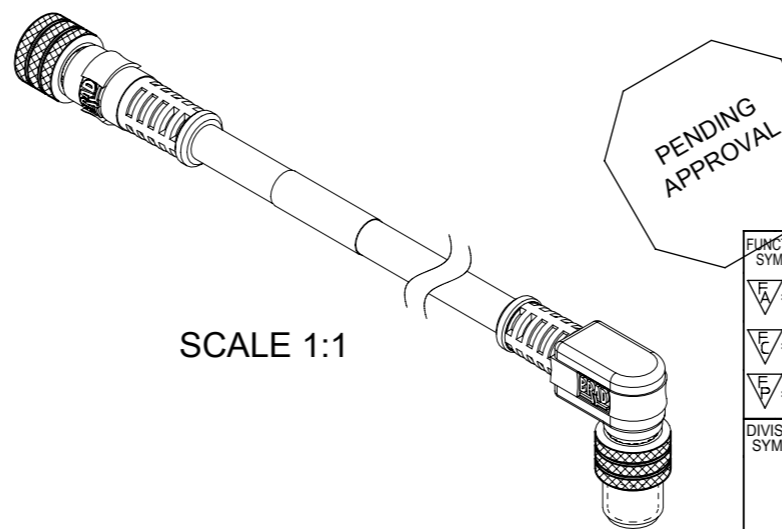
	3 CONTACTS		4 CONTACTS		5 CONTACTS	
FEMALE						
MALE						
CONNECTIONS	PIN	WIRE	PIN	WIRE	PIN	WIRE
	1	BROWN	1	BROWN	1	BROWN
	3	BLUE	2	WHITE	2	WHITE
	4	BLACK	3	BLUE	3	BLUE
			4	BLACK	4	BLACK
				5	GREY	

CODING ACCORDING TO IEC 61076-2-104

FOR OPTIONS SEE - NUMERICAL CODE - ON SHEET 2

BOM

ITEM	QTY.	DESCRIPTION	MATERIAL	FINISH
11	1	INSERT MALE BLACK	TPU	---
10	3 / 4 / 5	CONTACT M8 MALE	BRASS	SELECTIVE Au OVER Ni
9	1	SLEEVE	BRASS	NICKEL
8	1	COUPLING NUT M8 MALE	BRASS	NICKEL
7	1	LABEL YELLOW	VINYL	---
	-	PRINTING FOR CABLES Ixx	---	---
6	-	CABLE	SEE SHEET 2	---
5	-	OVERMOULDING BLACK	TPU	---
4	1	COUPLING NUT M8 FEMALE	BRASS	NICKEL
3	1	INSERT FEMALE BLACK	TPU	---
2	1	O-RING RED	FKM	---
1	3 / 4 / 5	CONTACT M8 FEMALE	BRASS	SELECTIVE Au OVER Ni



SCALE 1:1

THIS DRAWING CONTAINS INFORMATION THAT IS PROPRIETARY TO MOLEX ELECTRONIC TECHNOLOGIES, LLC AND SHOULD NOT BE USED WITHOUT WRITTEN PERMISSION

FUNCTIONAL SYMBOLS: $\nabla/A = 0$, $\nabla/E = 0$, $\nabla/F = 0$

DIMENSION UNITS: mm | SCALE: 2:1

GENERAL TOLERANCES (UNLESS SPECIFIED): 4 PLACES ±, 3 PLACES ±, 2 PLACES ± 0.05, 1 PLACE ± 0.3, 0 PLACES ± 0.5

ANGULAR TOL: ± 1.0°

DRAFT WHERE APPLICABLE MUST REMAIN WITHIN DIMENSIONS

THIRD ANGLE PROJECTION:

DRAWING: A3-SIZE | SERIES: 120087

EC NO: 659461 | DRWN: RSCHEIBER | 2021/03/29

CHK'D: | APPR: RSILLER

INITIAL REVISION: DRWN: JMARSZALEK | 2016/11/02 | APPR: RSILLER | 2017/01/11

DOCUMENT NUMBER: 1200878321 | DOC TYPE: PSD | DOC PART: 000 | REVISION: A1

CUSTOMER: GENERAL MARKET | SHEET NUMBER: 1 OF 3

molex

CSE M8 M8 XP AC BC FE STR PVC MA RA XM

PRODUCT CUSTOMER DRAWING

ENGINEERING NO. - NUMERICAL CODE (Available parts see PART LIST table. Other parts available upon request).

OPTIONS

4 4 X 0 3 2 X X X X X X X X

44=Nano-Change
M8x1
Double ended

Contacts:
3=3 Contacts
4=4 Contacts
5=5 Contacts

Heads style:
032=Plug Female Straight
to Plug Male 90°

Cable type: See Table

Units:
M=Meter

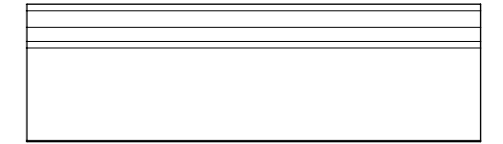
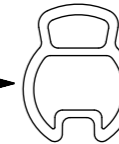
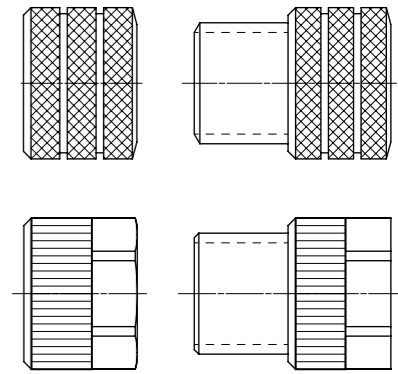
Length
Examples:
005=0.5 unit
010=1 unit
100=10 unit

Overmold color:
Blank (Standard)=Black
A=Grey / G=Black / Y=Yellow

Coupling Nut:
Blank (Standard)=Knurled Brass Ni Plated
9=Knurled / Hexagonal SW9 Brass Ni Plated

H= 2 pcs. of I/D Carrier PVC Transparent
(Cables lxx & P82 always with 2 pcs. of
I/D Carrier)

COUPLING NUT
FEMALE MALE

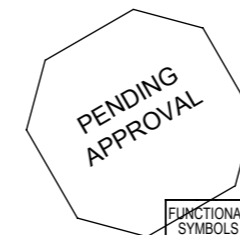


CABLE INFORMATION (for more information see Cable Data Sheet).

CABLE TYPE	NO. OF WIRES	CROSS SECTION	CABLE JACKET	UL	CSA	STATIC: TEMP. / BENDING RADIUS	DYNAMIC: TEMP. / BENDING RADIUS	DRAG CHAIN	SHIELD
E02	3 / 4 / 5	0.25mm ²	PVC BLACK	UL 2464/1729	C22.2 I/II A/B 80°C/300V	-30°C to +80°C, >10xO.D.	-10°C to +80°C, >15xO.D.	-	-
H08	3 / 4 / 5	0.25mm ²	PUR BLACK LS0H	UL 21198/10493	C22.2 I/II A/B 80°C/300V	-40°C to +80°C, >5xO.D.	-25°C to +80°C, >10xO.D.	2 000 000 cycles at 20°C, Temp. range +5°C to +60°C	-
I02	3 / 4	0.25mm ²	PVC CEI GREY	-	-	-30°C to +70°C	-5°C to +70°C	-	-
P02	3 / 4 / 5	0.25mm ²	PUR / PVC BLACK	-	-	-30°C to +80°C, >7xO.D.	-5°C to +80°C, >15xO.D.	-	-
P82	3	0.34mm ²	PUR IRR ORANGE	-	-	-50°C to +105°C, >5xO.D.	-40°C to +105°C, >7.5xO.D.	-	-

CABLE LENGTH TOLERANCES

OVER	UP TO AND INCLUDING	TOLERANCES
0	305mm	+19mm
305mm	915mm	+45mm
915mm	1830mm	+56mm
1830mm	3660mm	+89mm
3660mm	7320mm	+165mm
7320mm	14640mm	+317mm
14640mm	30500mm	+610mm
30500mm	>	+2% of finished length



FUNCTIONAL SYMBOLS		THIS DRAWING CONTAINS INFORMATION THAT IS PROPRIETARY TO MOLEX ELECTRONIC TECHNOLOGIES, LLC AND SHOULD NOT BE USED WITHOUT WRITTEN PERMISSION		CURRENT REV DESC: NEW P/N ADDED		molex	
▽A = 0	mm	SCALE	2:1	GENERAL TOLERANCES (UNLESS SPECIFIED)			
▽E = 0	ANGULAR TOL		± 1.0 °	4 PLACES ±		CSE M8 M8 XP AC BC FE STR PVC MA RA XM	
▽F = 0	DIVISIONAL SYMBOLS		3 PLACES ±	3 PLACES ±		PRODUCT CUSTOMER DRAWING	
DRAFT WHERE APPLICABLE MUST REMAIN WITHIN DIMENSIONS		THIRD ANGLE PROJECTION	DRAWING	SERIES	MATERIAL NUMBER	CUSTOMER	SHEET NUMBER
			A3-SIZE	120087	SEE SHEET 3	GENERAL MARKET	2 OF 3

DOCUMENT STATUS	RQ	RELEASE DATE	
-----------------	----	--------------	--

PART LIST


No.	Molex PN	Engineering No.	Cable Length
1	1200281252	444032E02M020	2m
2	1200281253	444032E02M030	3m
3	1200281254	444032E02M050	5m
4	1200878201	443032H08M030	3m
5	1200878320	443032E02M006	0.6m
6	1200878321	443032E02M010	1m
7	1200878322	443032P02M006	0.6m
8	1200878323	443032P02M008	0.8m
9	1200878324	443032P02M010	1m
10	1200878325	443032P02M020	2m
11	1200878326	443032P02M030	3m
12	1200878327	443032P02M050	5m
13	1200878374	444032E02M003	0.3m
14	1200878375	444032P02M006	0.6m
15	1200878376	444032P02M008	0.8m
16	1200878377	444032P02M020	2m
17	1200878501	443032H08M010	1m
18	1200878503	444032E02M010	1m
19	1200878504	444032P02M010	1m
20	1200878506	444032H08M010	1m
21	1200878522	443032E02M050	5m
22	1200879017	443032H08M010H	1m
23			
24			
25			
26			
27			
28			
29			
30			
31			
32			
33			
34			
35			

No.	Molex PN	Engineering No.	Cable Length
36			
37			
38			
39			
40			
41			
42			
43			
44			
45			
46			
47			
48			
49			
50			
51			
52			
53			
54			
55			
56			
57			
58			
59			
60			
61			
62			
63			
64			
65			
66			
67			
68			
69			
70			

No.	Molex PN	Engineering No.	Cable Length
71			
72			
73			
74			
75			
76			
77			
78			
79			
80			
81			
82			
83			
84			
85			
86			
87			
88			
89			
90			
91			
92			
93			
94			
95			
96			
97			
98			
99			
100			
101			
102			
103			
104			
105			

No.	Molex PN	Engineering No.	Cable Length
106			
107			
108			
109			
110			
111			
112			
113			
114			
115			
116			
117			
118			
119			
120			
121			
122			
123			
124			
125			
126			
127			
128			
129			
130			
131			
132			
133			
134			
135			
136			
137			
138			
139			
140			

PENDING APPROVAL

FUNCTIONAL SYMBOLS		THIS DRAWING CONTAINS INFORMATION THAT IS PROPRIETARY TO MOLEX ELECTRONIC TECHNOLOGIES, LLC AND SHOULD NOT BE USED WITHOUT WRITTEN PERMISSION		CURRENT REV DESC: NEW P/N ADDED	
$\nabla_A = 0$	mm	SCALE	1:1	 CSE M8 M8 XP AC BC FE STR PVC MA RA XM	
$\nabla_F = 0$	GENERAL TOLERANCES (UNLESS SPECIFIED)				
$\nabla_P = 0$	ANGULAR TOL $\pm 1.0^\circ$				
DIVISIONAL SYMBOLS		4 PLACES	\pm	EC NO: 659461	2021/03/29
		3 PLACES	\pm	DRWN: RSCHIEBER	
		2 PLACES	± 0.05	CHK'D:	
		1 PLACE	± 0.3	APPR:	
		0 PLACES	± 0.5	INITIAL REVISION:	
		DRAFT WHERE APPLICABLE MUST REMAIN WITHIN DIMENSIONS		DRWN: JMARSZALEK	2016/11/02
		THIRD ANGLE PROJECTION		APPR: RSILLER	2017/01/11
		DRAWING		DOCUMENT NUMBER	
		A3-SIZE		1200878321	
		SERIES		DOC TYPE	DOC PART
		120087		PSD	000
		MATERIAL NUMBER		REVISION	
		SEE PART LIST		A1	
		CUSTOMER		SHEET NUMBER	
		GENERAL MARKET		3 OF 3	

DOCUMENT STATUS	RQ	RELEASE DATE	
-----------------	----	--------------	--