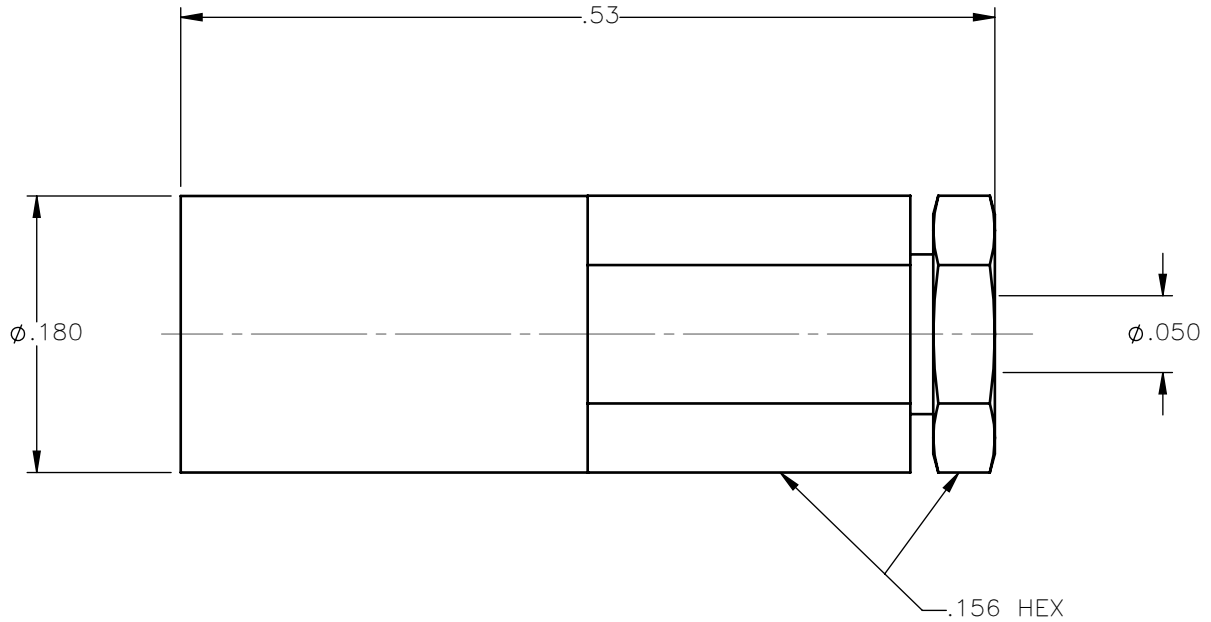
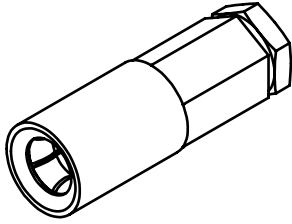


| REVISIONS | | | |
|-----------|-----------------|----------|----------|
| REV. | DESCRIPTION | DATE | APPROVED |
| A | INITIAL RELEASE | 02/18/15 | N.D. |





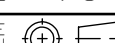
NOTES:

MATERIALS:

1. BODY & CONTACT = BERYLLIUM COPPER PER ASTM B196, ALLOY C17300, TEMPER TD04.
2. INSULATORS = VIRGIN WHITE TEFLON PER ASTM D1710, GRADE 1, TYPE I, CLASS "B".
3. SLEEVE & BACK NUT = BRASS PER ASTM B16, ALLOY C36000, TEMPER H02.

FINISHES:

1. CONTACT = GOLD PLATE PER ASTM B488-01, TYPE II, 50µin MIN, GRADE C, OVER 100 TO 200µin STRESS FREE SULFAMATE NICKEL PER QQ-N-290.
2. ALL OTHER METAL PARTS = GOLD PLATE PER ASTM B488-01, TYPE II, 30µin MIN, GRADE C OVER 100 TO 200µin COPPER STRIKE PER MIL-C-14550.

| | | | | |
|---|-------------------------|-----------|---|--|
| UNLESS OTHERWISE SPECIFIED DIMENSIONS ARE IN INCHES TOLERANCES ON | DWN: | DATE |  Property of Radiall This document cannot be reproduced or communicated to a third party without prior written permission of RADIALL. |  |
| | N.D. | 02/18/15 | | |
| DECIMAL | ANGLE | CHKD: | DATE | SSMB STRAIGHT PLUG SOLDER TYPE FOR .047 S/R AND SIMILAR CABLES |
| | | D.N. | 02/18/15 | |
| | | APVD: | DATE | |
| | | J.M. | 02/18/15 | SIZE: A FSCM NO.: 19505 DWG NO.: 7202-1542-011 REV: A |
| REFERENCE: | MATERIALS AND FINISHES: | SEE NOTES | | SCALE: 8:1 THIRD ANGLE PROJECTION |
| ORIGINATED: N.D. DATE: 02/18/15 | | | |  SHEET 1 OF 1 |

7202-1542-011